

# Broadway Public Realm Plan and Streetscape Plan



## Advancing the Broadway Plan

In 2022, Vancouver City Council approved the Broadway Plan, a 30-year plan to guide growth and change for the area along Broadway, generally located east to west from Clark Drive to Vine Street, and north to south from the 1st Avenue to 16th Avenue. Work is now underway in the Broadway Plan area to add new housing, job space and amenities that integrate with the Broadway Subway and meet our city's needs.

In spring 2024, you can learn more and share your feedback on these Broadway Plan implementation projects and updates on: **City Hall Campus planning; Broadway Public Realm and Streetscape Plan; and the Broadway Plan Review.**

For more information: [shapeyourcity.ca/broadway-plan](https://shapeyourcity.ca/broadway-plan)

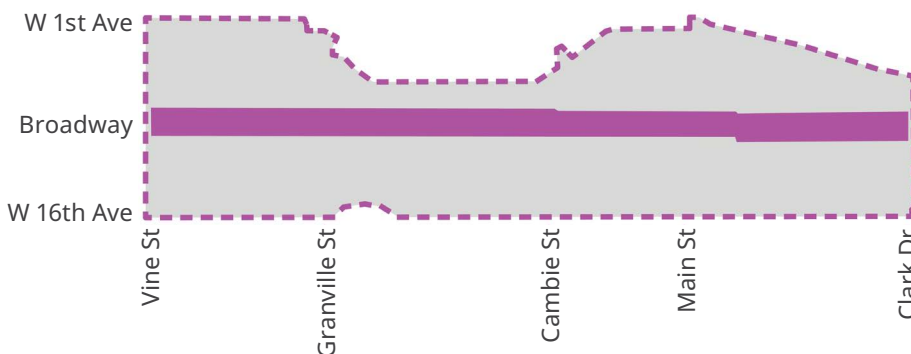
We're creating the Broadway Public Realm Plan and Broadway Streetscape Plan to guide the development of public spaces and streets so people can feel comfortable walking, cycling and moving around the Broadway Plan area.

### What will the Broadway Public Realm Plan do?

This plan will be a practical guide to finding opportunities for public spaces and streets as the area grows and identifying what enhancements would best support our current and future needs.

### What will the Broadway Streetscape Plan do?

This plan will establish a design concept for the transformation of the Broadway Corridor into a Great Street. It will be built over time through redevelopment of properties along Broadway and City-led capital projects.



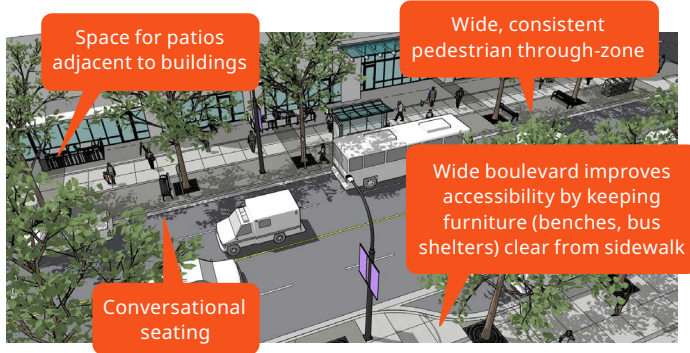
**We are here**  
**Provide input today!**  
 Today we are sharing what streets and spaces could look like in the Broadway area as they evolve over time as well as more detail on our Key Moves

# Four key moves will guide improvements to the area:

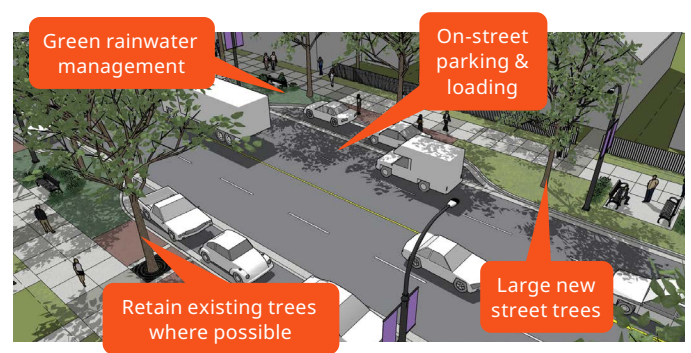
## Key Move 1: Transform Broadway into a great street

Create a Streetscape Plan that will help transform the Broadway Corridor into a Great Street – a street of special significance, with a series of unique and vibrant places to live, work, visit and play.

### Commercial Public Realm - Illustrative Example



### Residential Public Realm - Illustrative Example



## Key Move 2: Add more public spaces

Provide more equitable access and ensure that all residents and workers can use and enjoy public spaces. Renew or expand existing spaces to better meet neighbourhood needs.

Would you like to see spaces like these in your neighbourhood?

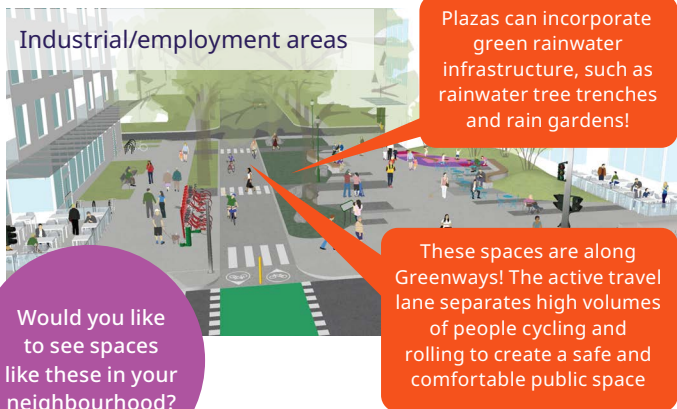
### Example: Event and gathering plaza at gateway



### Example: Event and gathering plaza at gateway



### Example: Privately owned public space at gateway



Would you like to see spaces like these in your neighbourhood?

### Example: Nature and greenspace



**Example: Greenway and gardening plots**



**Example: Nature and greenspace**

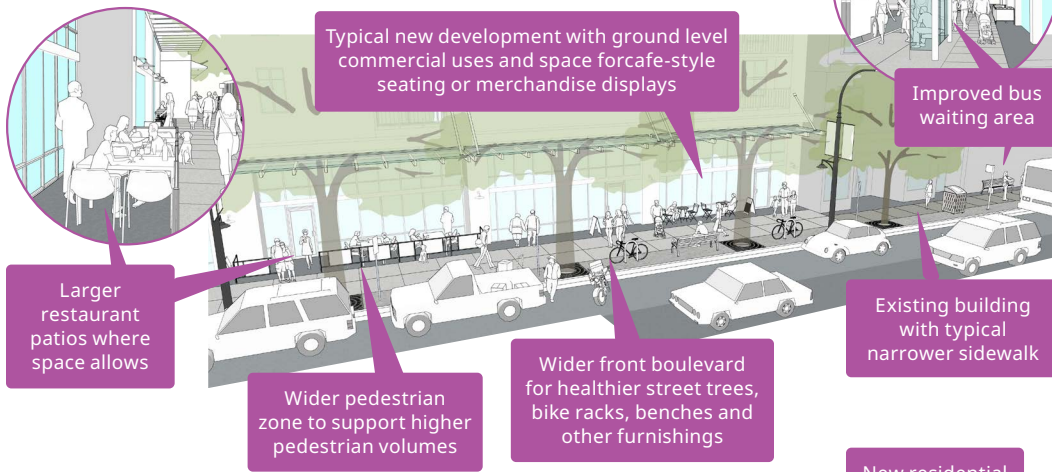


**Example: Play and recreation space**



**Key Move 3:  
Complete neighbourhood routes**

**Commercial High Streets**



Ensure public spaces and destinations are well-connected by streets that encourage an active public life. Create a continuous and comfortable pedestrian experience by filling in the gaps in the street network.

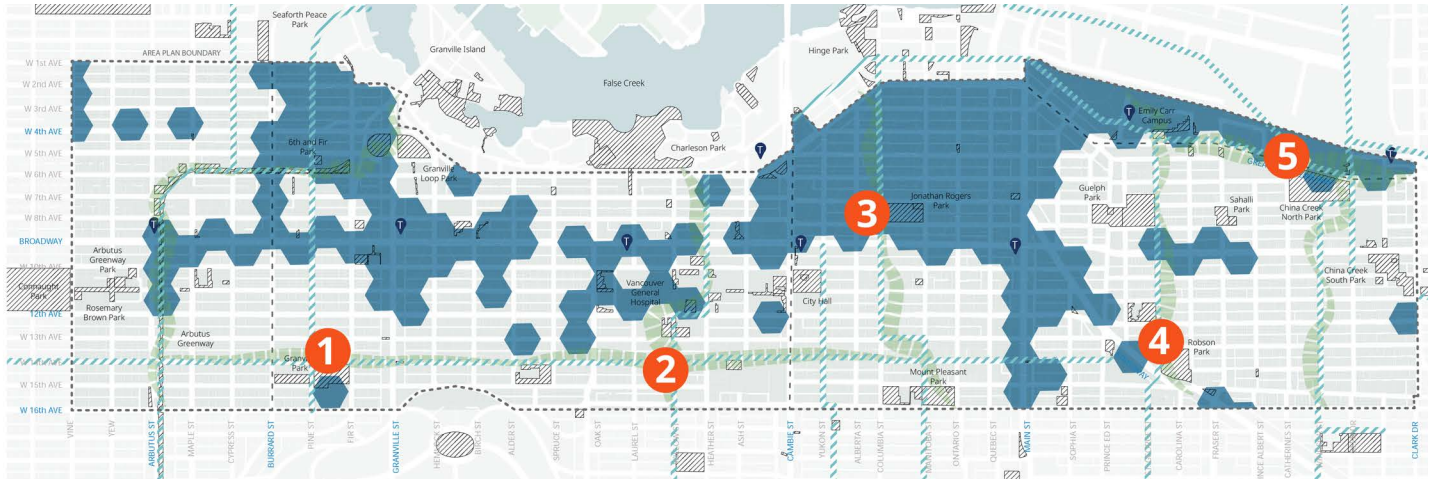
**Residential Local Streets**



## Key Move 4: Nurture nature

### Urban Forest Canopy Gap Priority Area, Blue Green Systems, Ecological Corridors Map

Blue green systems and green rainwater infrastructure will provide an urban ecology of plants and trees for birds and pollinators and help contribute to climate resilience and livability of the Broadway Plan area. Improve the urban tree canopy and create more opportunities for people to have access to and a connection with nature in their neighbourhoods.



**Key Public Spaces**  
(Parks, POPS, etc.)



**Urban Forest Canopy Gap Priority Area**  
Locations with less than 15% tree canopy coverage



**Blue Green System**  
Per Broadway Plan Public Realm Framework Map



**Ecological Corridor Opportunity Area**

### Priority blue-green system projects within the Broadway Plan area

1

Pine Street at Granville Park Green Rainwater Infrastructure

2

Willow Street Rainwater Management Meadow

3

Columbia Street at Jonathan Rogers Park

4

St. George Railway Phase 2

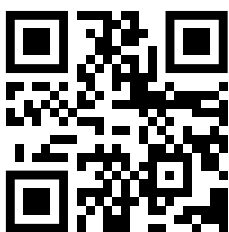
5

Great Northern Way Rain Gardens

## Share your thoughts on improving public open spaces in the Broadway Plan area.

Take the survey online:

[shapeyourcity.ca/broadway-plan](https://shapeyourcity.ca/broadway-plan)



Take the survey by phone: **3-1-1**

Learn more by visiting our website:

[shapeyourcity.ca/broadway-public-realm](https://shapeyourcity.ca/broadway-public-realm)

Contact us at: [broadwayplan@vancouver.ca](mailto:broadwayplan@vancouver.ca)

