

### We're creating a Public Realm Plan for the Broadway Plan area and a Streetscape Plan for the Broadway corridor!

#### Background

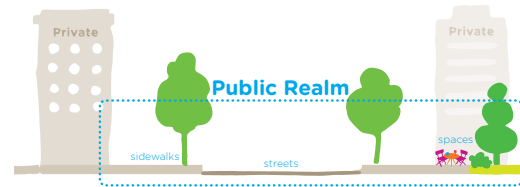
The *Broadway Plan* is a comprehensive area plan to guide growth and positive change in the neighbourhoods surrounding the Broadway Subway over the next 30 years. During the *Broadway Plan* process we heard from thousands of people about ideas, interests and opportunities for streets, parks, and public open spaces in Kitsilano, Fairview and Mount Pleasant.

#### What will the *Broadway Public Realm Plan* do?

The *Broadway Public Realm Plan* will identify what public open space and street enhancements would best support the current need and future growth in the Plan Area. It will consider public open spaces on City-owned streets and properties, as well as privately owned public spaces (POPS). It will be a practical guide to leverage opportunities for public realm improvements as the area grows.

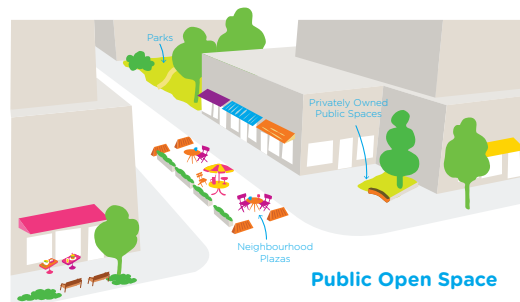
#### What will the *Broadway Corridor Streetscape Plan* do?

The *Broadway Corridor Streetscape Plan* will establish a design concept for the transformation of the Broadway Corridor into a "Great Street". It will be built over time through redevelopment of properties along Broadway and City-led capital projects.



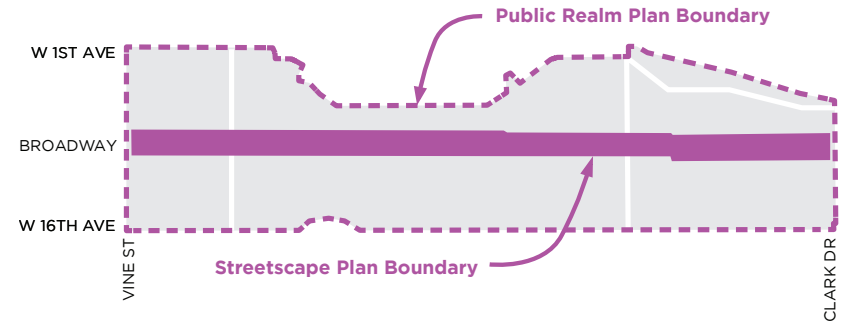
#### What is the "Public Realm"?

"Public realm" is generally everything that can be seen and experienced at pedestrian eye level that impacts the overall experience and attractiveness of a public space. It has a broader meaning than "public space", as it also includes the building façades, storefronts, public art, restaurant patios and streetscape furnishings like lighting and benches that shape the experience of public spaces.



#### What is "Public Open Space"?

All the places publicly owned or in public use that are for spending time in, accessible and enjoyable by people. It includes parks, school grounds, plazas, privately owned public spaces (POPS) and the Arbutus Greenway.



#### Draft Key Moves

The four Draft Key Moves identify high level spatial transformations that will guide how the public space network can be improved. An important next step will be identifying strategies and actions for each Key Move.

*In order to advance reconciliation, we are continuing conversations with the local Nations to better reflect their visibility and voice within each key move.*



#### 1. Transform Broadway into a Great Street

Create a Streetscape Plan that will guide the transformation of the Broadway Corridor into a "Great Street" - a street of special significance, with a series of unique and vibrant places to live, work, visit and play. The Broadway Subway is a major catalyst for growth and change in the area, especially at the stations. Establish the station areas as bustling anchors within each neighbourhood.



#### 3. Complete Neighbourhood Routes

At the neighbourhood scale, ensure public open spaces and destinations are well-connected by streets that encourage an active public life. This includes greenways and blue green systems as well as commercial high streets and village streets - which are important community hubs. Create a continuous and comfortable pedestrian experience by filling in the gaps in the street network.



#### 2. Add More Local and Neighbourhood Spaces

People should be within a 5 minute walk of local and neighbourhood serving public open spaces. Provide more equitable access and ensure that all residents and workers are able to enjoy key functions of public open space (play, social, respite + nature, cultural). These spaces should reflect the unique character of the community. Additionally, renew/expand existing spaces to better meet neighbourhood needs.



#### 4. Nurture Nature

Longer, drier summers with frequent heat waves are negatively impacting urban tree canopy and naturalized areas in the Broadway Plan Area. Blue green systems and green rainwater infrastructure will provide an urban ecology of plants and trees for birds and pollinators and help contribute to climate resilience and livability of the Broadway Plan Area. Improve urban tree canopy and create more opportunities for people to have access to and a connection with nature in their neighbourhoods.

## Key Functions of Public Open Space

While different communities will have different needs, there are several basic functions of public open space, most of which should be within a 5-minute walk or roll from where people live and work.

Public open spaces can have multiple key functions:

### Social

Social spaces offer opportunities for people to meet and gather. They have areas for seating and staying, such as plazas with movable furniture or places with benches that encourage social interaction.

### Play

Play spaces offer a place to play for children, teens and adults. The space facilitates activities which can be informal or formal, such as playgrounds or nature-based play.

### Commercial

These spaces provide a variety of commercial activities within the space or along its edges. This is often heavily dependent on adjacent buildings and their ground level businesses.

### Cultural

These spaces offer opportunities to share in cultural experiences and creative expressions. There is infrastructure and opportunities for events, cultural practices, artworks, celebrations or performances.

### Civic Expression, Celebration & Events

These spaces support large scale artworks, celebrations and events.

### Respite + Nature

These spaces offer a place for people to feel more connected with "nature" and provide respite from the busy urban environment. This is a space that facilitates rest and may provide reprieve from urban heat island. It also supports urban wildlife, biodiversity and climate change resiliency.

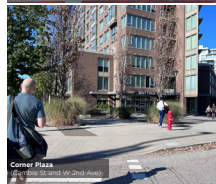
## Creating New Public Open Spaces

There are four approaches to delivering new public open spaces in Broadway:



### 1. Road Space Reallocation

This involves re-purposing parts of streets for a diverse range of people-centred activities, including walking, rolling and cycling. It will be a primary way of delivering new public open space and will help achieve City Council's motion to reallocate a minimum of 11% of road space to non-car uses. Sizes of these spaces are more limited and potential locations are dependent on maintaining necessary access and circulation by vehicles.



### 2. Privately Owned Public Space (POPS)

This involves building public open spaces on private property through redevelopment. Sizes of these spaces will be smaller and highly dependent on the scale of the redevelopment site and type of development. Locations will be dependent on where redevelopment occurs, generally near commercial uses and at street level.



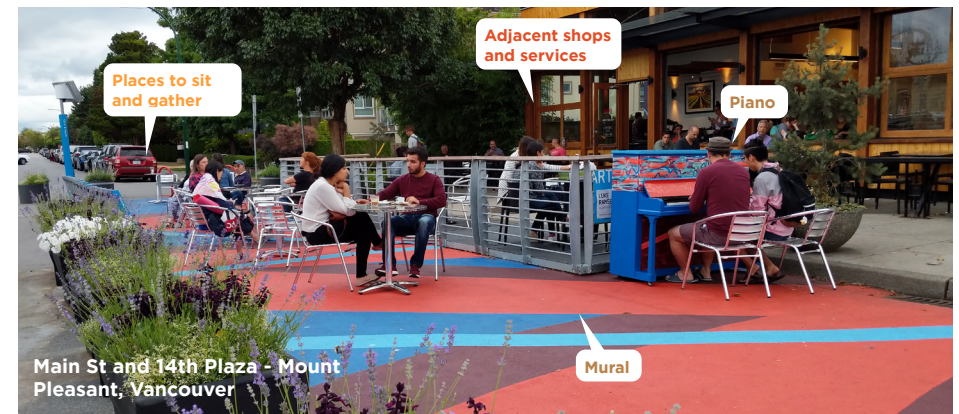
### 3. Parks On Large Sites

This involves building and securing dedicated park space on private property through redevelopment. Sizes of these spaces will be highly dependent on parcel size. Locations will be dependent on where redevelopment occurs.



### 4. Land Acquisition

This involves purchasing property to meet community public open space needs. The high cost of land will limit the amount of space that can be purchased by the City, given the City's finite financial resources and the range of other public amenity priorities that need to be addressed.



## Share your thoughts on improving public open spaces in the Broadway Plan area



Take the survey online



Learn more by visiting our website  
[shapeyourcity.ca/broadway-public-realm](https://shapeyourcity.ca/broadway-public-realm)



Take the survey by phone  
**Call 3-1-1**



Contact us  
[broadwayplan@vancouver.ca](mailto:broadwayplan@vancouver.ca)