

Burrard Slopes Park

What we heard report

Values, needs and priorities

Fall 2023



Project background

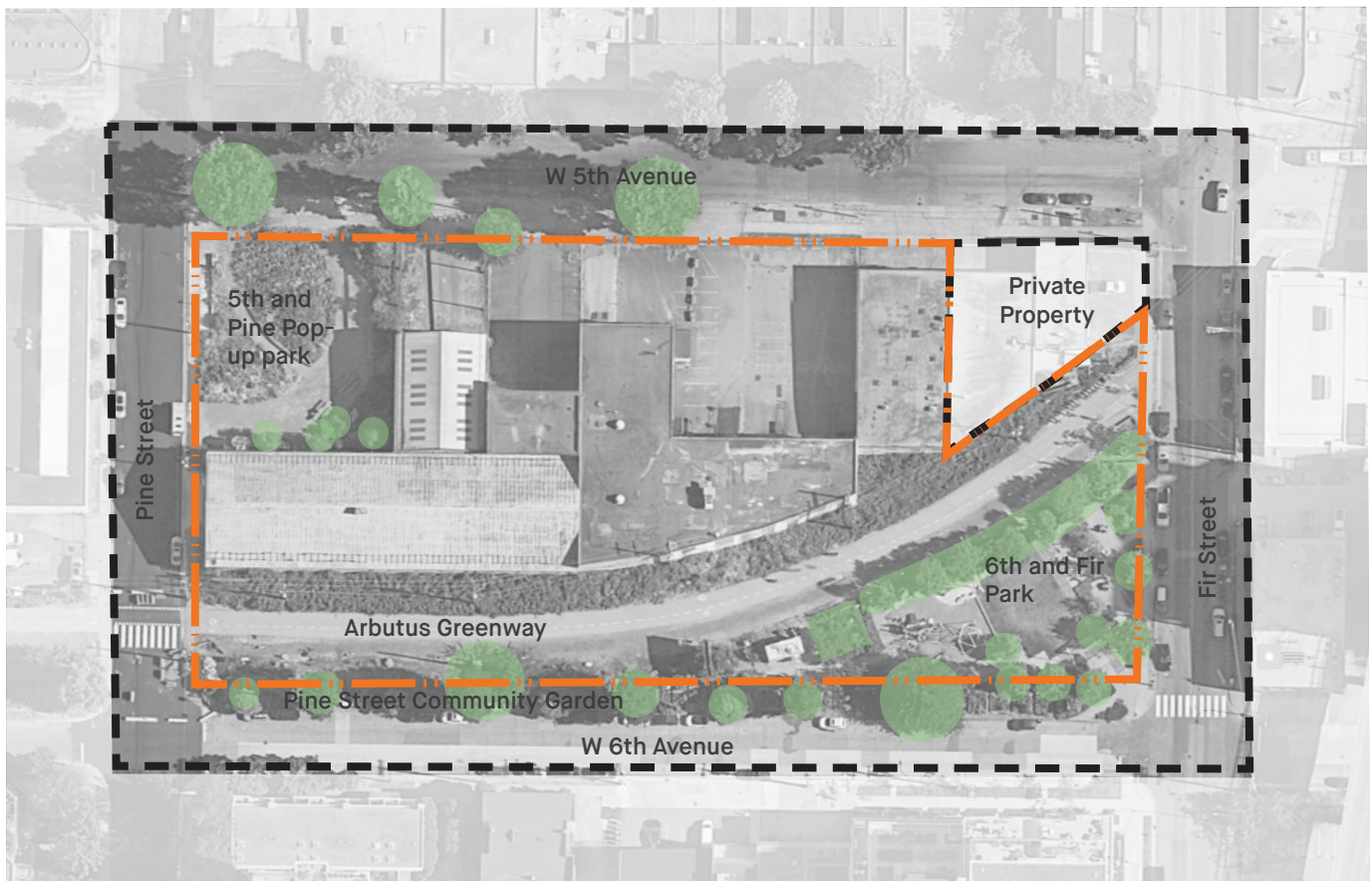
The Vancouver Park Board is planning a one hectare park located between two fast-growing neighbourhoods of Fairview and Kitsilano.

The new Burrard Slopes Park* will bring much needed green space to residents, workers and visitors alike. Its design will need to support city-wide initiatives related to Truth and Reconciliation, sustainability, park activities and resilience.

The site is within the shared and unceded territories of the xʷməθkʷəy̓əm (Musqueam), Skwxwú7mesh (Squamish), and səliwətaɫ (Tsleil-Waututh) Nations.

*Burrard Slopes Park is a temporary name. We plan to identify an official park name through a separate process.

Project site map



- Burrard Slopes Park Property Line
- - - Approximate Scope of Work Area = "Project Site"

What we did

From September 26 to October 15, 2023, the Park Board sought input from Vancouver residents and local businesses about their **values, needs, and priorities for the future Burrard Slopes Park**. This engagement took place through a virtual survey and in person at a pop-up event within the park.

The information gathered will help shape a vision and program for the park, as well as design direction.

The public was notified of the engagement process through posters in parks and community centres, social media, online advertising, mailing lists, and a media release.



875

Survey responses



5396

Postcards distributed



700+

Launch emails



26

Posters



13000+

Social media hits



110

Pop-up attendees

On October 7, 2023 we hosted an in-person drop-in event at Burrard Slopes Park. Over 110 participants joined us to review the boards and to share their priorities for the park.

Who we heard from

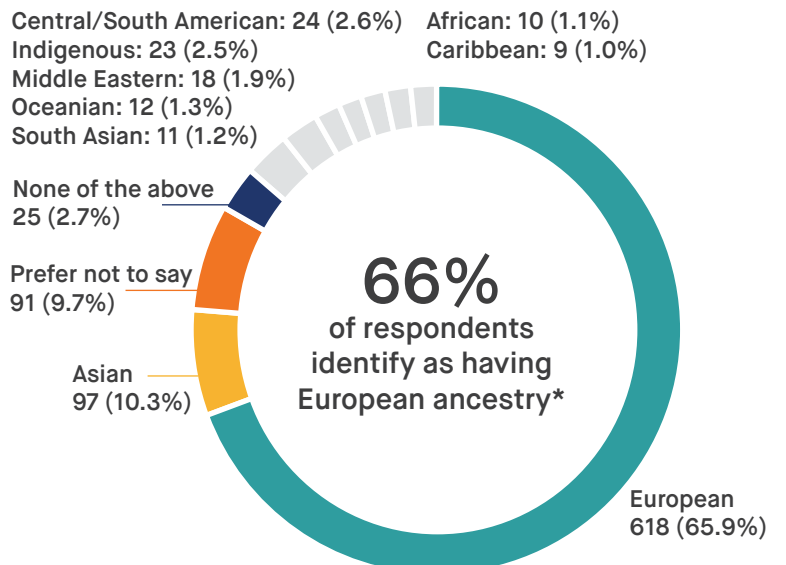
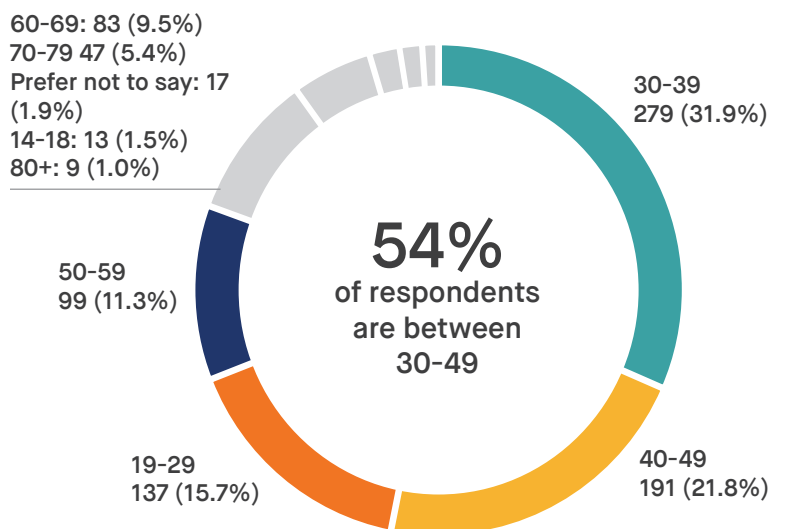
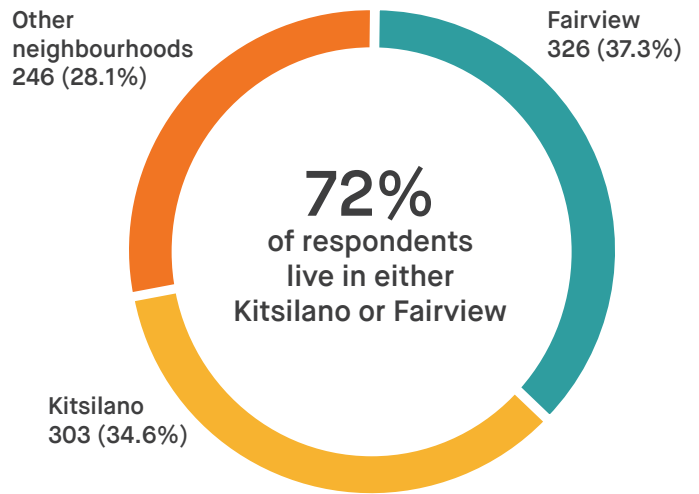
An online survey hosted on the Shape Your City platform drew 875 responses. Paper copies were available at locations.

We heard from a diverse range of people and age groups. The majority of participants (72%) live in the Kitsilano or Fairview neighbourhoods and use the park frequently, which indicates that respondents know the park well. Below are some further highlights of who we heard from more specifically.

85% of respondents use active transportation modes to get to the park.



*Residents of Vancouver and those connected to the city come from many different backgrounds. We asked respondents what they consider their main ethnic origin, or that of their ancestors, to help us understand if we're hearing from and reflecting the diversity of Vancouver.



What we heard

People's experience of the existing park



Key takeaways:



- The most beloved spaces in the park: **all the different garden spaces**. They are enjoyable to walk through, relax and be in, to work in or watch the activity.
- Top reasons why people like the park today: the **nature and relaxed feel**.
- One of the top reasons for people to visit the park: the **Arbutus Greenway**.
- Park access: primarily via **active transportation modes**.
- Biggest concerns: **safety**, primarily with the existing bike speeds conflicting with slower pedestrian movement.

Q3

Which existing park spaces do you use when you visit the project area?
(Select all that apply*):



*Percentages do not add up to 100% as respondents could choose more than one answer. Percentages correspond to how many respondents chose a particular answer.

Q6

What do you enjoy most about the existing park spaces in the project area? (open-ended question)



“Greenway/
walking/biking”

178 mentions
(included in 31% of responses)

“Garden(s)”

165 mentions
(included in 28% of responses)



Q7

What challenges or barriers do you encounter in using and accessing the existing park? (open-ended question)

Some of what we heard...

“There is an abrupt ending to the park at Fir St.”

“Not enough spaces to sit.”

“No open green spaces to lie down on or relax.”

“It’s hard to keep adventurous kids in and cars are often going fast on Fir - a bit stressful!”

“Lack of garbage/ recycle bins”

“The gathering spaces need more covered or sheltered areas for days when it’s too rainy or too hot/sunny.”

Emerging principle:
Circulation across and throughout the park will be intuitive, accessible and enjoyable.

Emerging principle:
The park will feel safe and comfortable at all times of day.

What we heard

People's vision and needs for the future park

Help us craft a vision for the future park.
Select the top 5 words that complete the sentence:

I imagine the park to be...



Q8

“Help us shape the vision for the future park.” Respondents were asked to select the top five words (from a list of 14) that complete the sentence: *I imagine this park to be...**

green
(606)

safe
(493)

community
hub (400)

calming
(352)

playful
(352)

welcoming
(415)

Accessible (330)
Comfortable(294)
Vibrant (261)
Dynamic (197)
Flexible (173)
Resilient (87)
Educational (60)
Other (55)

These key words will help shape the vision for the park.

*Results shown above are based on survey respondents. Similar results were found during the pop-up event.

Q9

We asked respondents whether they had a preference for more active or passive uses, or a combination of both, in the future park.

more passive uses (15%)

more active uses (18%)

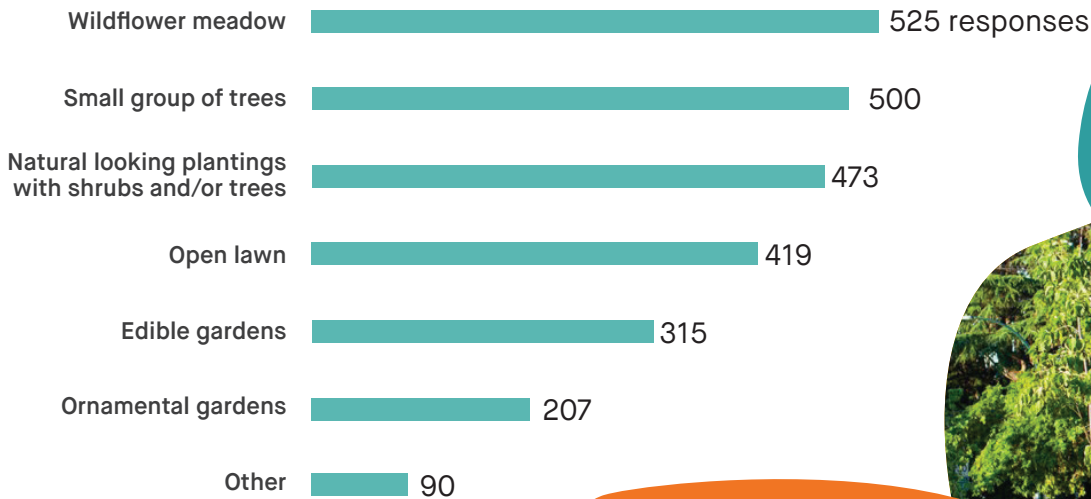
a combination of active and passive uses (65%)

Emerging principle:

There will be a balance of passive and active recreation options for all ages and abilities.

Q10

Most popular types of green space respondents would like to see incorporated in the park:



Most respondents prefer naturalistic plantings to more formal gardens

Emerging principle:

Visitors will be able to enjoy a variety of green spaces that support health and wellbeing.



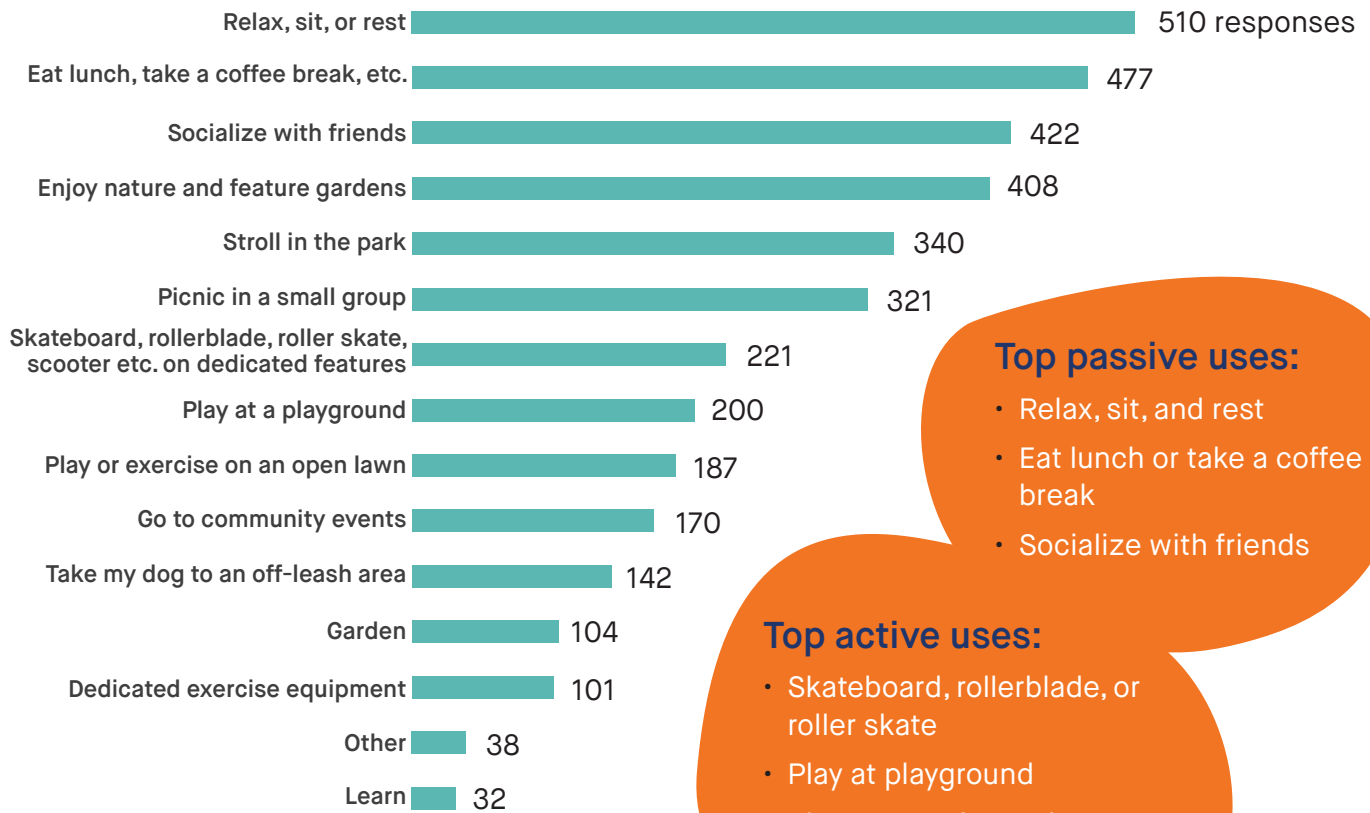
What we heard

Priorities for the future park



Q11

What activities do you hope to be able to do at the future park?



Top passive uses:

- Relax, sit, and rest
- Eat lunch or take a coffee break
- Socialize with friends

Top active uses:

- Skateboard, rollerblade, or roller skate
- Play at playground
- Play or exercise on lawn

Q12

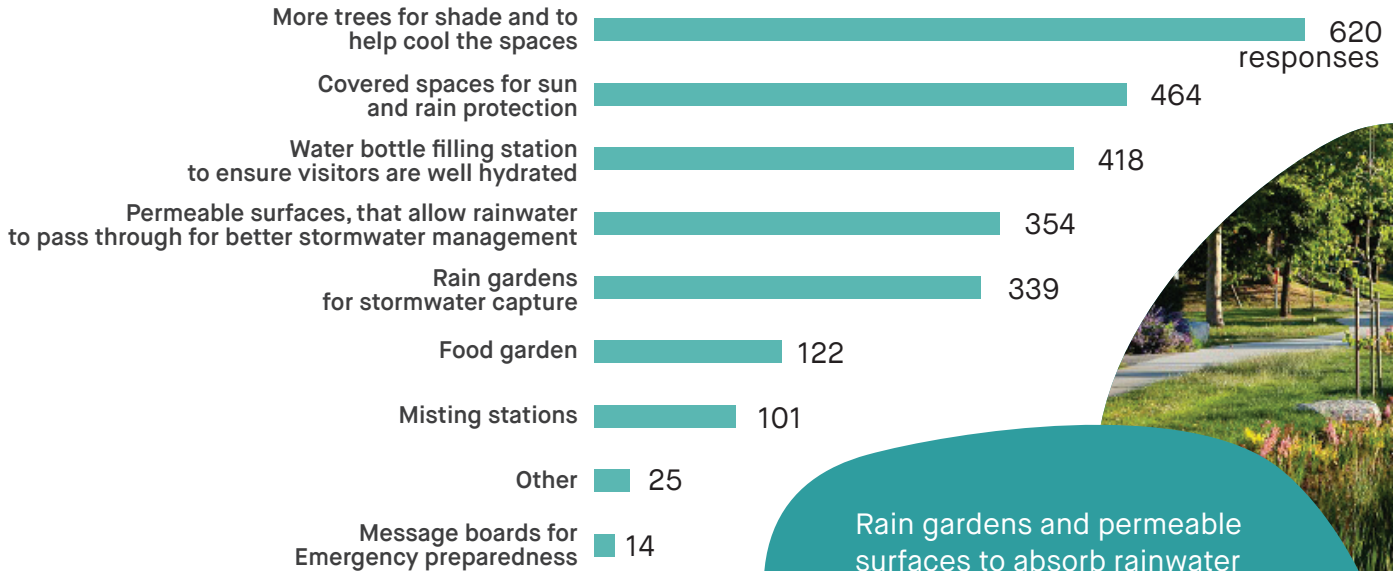
Most popular programs and events respondents would like to see at the park (out of 9 options):

1. Markets (489)
2. Musical performances (312)
3. Mural painting (241)



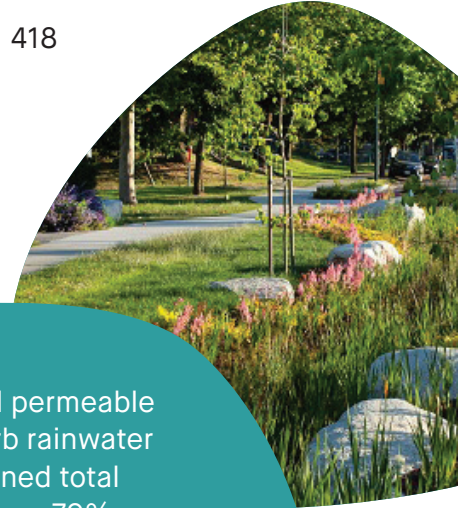
Q13

Most popular ways respondents chose to address climate change and resiliency in the future park (out of 9 options).



Emerging principle:

The park will be an ecological haven for insects, animals and people to thrive in.



Rain gardens and permeable surfaces to absorb rainwater received a combined total of 694 responses, or 79%, suggesting stormwater management in the park should be a priority.



Q14

Top accessible amenities to accommodate people with diverse needs and abilities:

1. Shade and covered space (71%)
2. Seating (65%)
3. Accessible pathways (58%)
4. Adequate lighting (53%, tied)
5. Universal washrooms (53%, tied)

Other approaches for accessibility were:

- open edges with clear views into the park (41% of respondents)
- accessible facilities including navigational tools (19%)
- wayfinding and signage (14%)

Emerging design direction

Vision statement

*Burrard Slopes Park will be a warm and welcoming community **gathering place** for all ages.*

*It will be a refreshing **green oasis** to enjoy every day and throughout the seasons.*

*The park will be a **place to enjoy** walking, rolling, playing, socializing, relaxing, gardening and more.*

Design principles

The park will feel **safe and comfortable** at all times of day.



There will be a **balance of passive and active** recreation options for all ages & abilities.



Visitors will be able to enjoy a **variety of green spaces** that support health and wellbeing.



By Geoff Peters.

Circulation across and throughout the park will be **intuitive, accessible and enjoyable**.



The park will be an **ecological haven** for insects, animals and people to thrive in.



What's next

The results from this first phase of engagement and input from the Host Nations and interested parties will be used to develop a park concept design.

This will be shared with the public in our next round of engagement in summer 2024.

We'd love to stay in touch!

Email us at: burrardslopes@vancouver.ca

Sign up for project updates on the Shape Your City website: www.shapeyourcity.ca/burrard-slopes-park



Project and engagement timeline

