

# There's a new park coming to Fairview and Kitsilano!

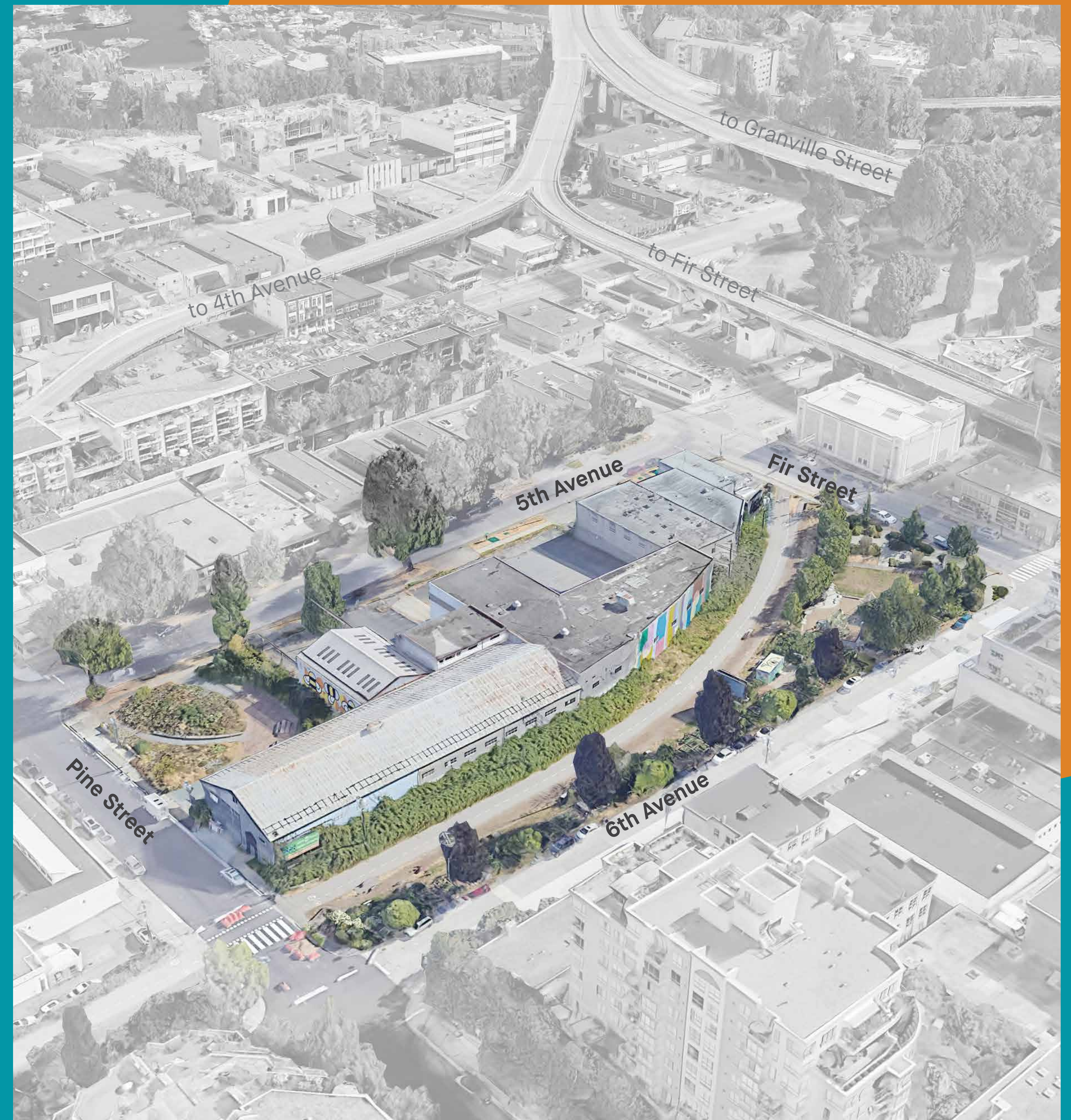
The Vancouver Park Board is planning a one hectare park located between two fast-growing neighbourhoods of Fairview and Kitsilano.

The new Burrard Slopes Park\* will bring much needed green space to residents, workers and visitors alike. Its design will need to support city-wide initiatives related to Reconciliation, sustainability, park activities and resilience.

We need your input to help inform the design vision and preliminary concept plans for the future Burrard Slopes Park.

The site is within the shared and unceded  $x^w m \text{ə} \theta k^w \text{ə} \dot{y} \text{ə} m$  (Musqueam),  $S \dot{k} w \dot{x} w \acute{u} 7 m e s h$  (Squamish), and  $s \text{ə} l i l w \text{ə} t \text{ə} \dagger$  (Tsleil-Waututh) territories.

\*Burrard Slopes Park is a temporary name and we plan to identify an official park name through a separate process.



Aerial image showing the existing park site, buildings and vegetation.

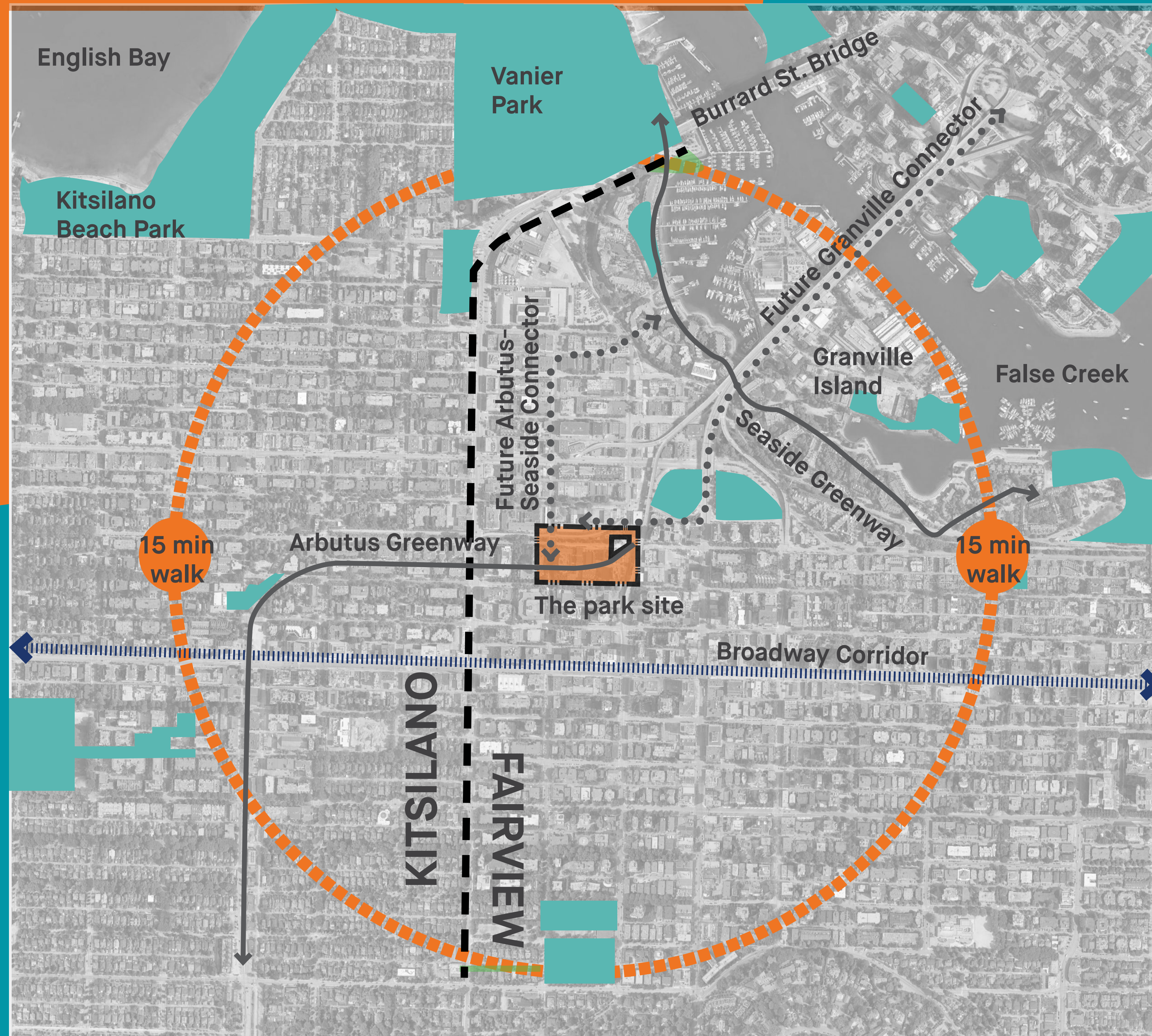


Scan this QR code to complete the survey!

Have a question? Email [burrardslopes@vancouver.ca](mailto:burrardslopes@vancouver.ca)

# Overview

The park's project area is between Pine and Fir streets and W 5th and 6th avenues.



## Project timeline

Spring through summer

2023

Project start-up and site analysis

Fall

We are here

Launch first public engagement to gather input on vision, values, needs and preliminary design ideas

Fall through winter

2024

Analyze feedback received, complete needs assessment and develop design concepts

Spring

Launch second public engagement to gather input on preliminary concept plans

Summer through fall

Preferred concept plan development

Winter

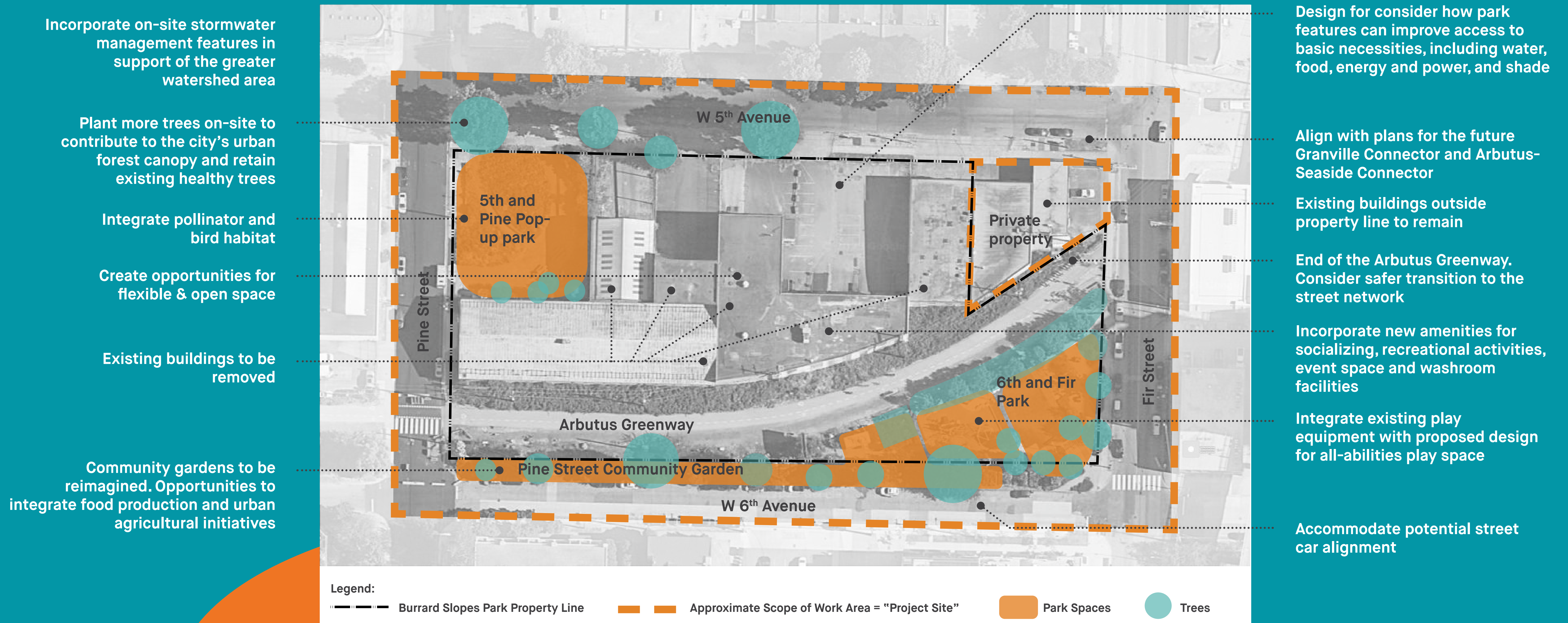
2025

Final concept plan presentation to the public and the Park Board

# The new park site

Burrard Slopes Park will be located between Pine and Fir streets, and W 5th and 6th avenues. The site includes four buildings destined for removal on the north side. This means that the usable park space will double in size!

The map below provides a reference of what is on the site today and some of the opportunities for consideration during our design process.



Existing Condition Map

# Looking back in time

Kitsilano Indian Reserve no.6, (village Seḥákw/səḥaʔqʷ), circa 1891. (Source: City of Vancouver Archives)



## Since time immemorial

### Pre-contact history

Since time immemorial, xʷməθkʷəy̓əm (Musqueam), Ṣḵwəxwú7mesh (Squamish), and səlliwətaɫ (Tsleil-Waututh) have lived on the lands where the park is to be located. The closest known village to the site is Seḥákw/səḥaʔqʷ, where many families would travel in the summer. With an abundance of elk, beaver, deer, salmon, duck and cedar, this area was an ideal location for fishing, hunting and harvesting traditional resources, and other cultural practices.

The lost stream one block west of Pine Street was an important access route to the sea and a key amenity for recreation and resources.

© Abbott, Harry Braithwaite. Vancouver, BC, 1890. (Source: City of Vancouver Archives)

As settlers developed the area around Seḥákw/səḥaʔqʷ, the provincial government took portions of lands reserved for local First Nations. This included over 3.5 acres for the Canadian Pacific Railway (CPR). By 1913, the government ejected all local Nations without consent.

The rail line enabled the growth of sawmills, wood yards and asphalt plants in the area. Immigrants, primarily Japanese, Chinese and South Asian, came to this area and established community close to these workplaces. In 1942, the government removed the Japanese Canadian community from the Pacific coast following the bombing of Pearl Harbour, due to discriminatory assumptions about Japanese Canadians.

## Industrial history late 1800s - 1980s



Housing for industrial workers, West 6th Ave (Source: City of Vancouver Archives CVA 786-0.5)

Grassroots community gardens along a stretch of abandoned rail line, 2014



Seḥákw development adjacent to Vanier Park

## 1980s onwards

### Recent history

After the railway service stopped in 2001, the Arbutus Corridor sat vacant until members of the community transformed the abandoned lands into edible gardens. In 2016, the City purchased the Arbutus Corridor lands to turn them into a public greenway and parkland.

Under the governance of the Squamish Nation, a brand new neighbourhood, Seḥákw, is being developed to the north of Burrard Slopes Park.

To this day, food remains an important part of the culture of the area. It is evident from the grassroots community gardens along the Arbutus Corridor, to the Granville Island Market, and various grocers, cafes, and restaurants along 4th Avenue and Granville Street.

Granville Island Public Market is a 10 minute walk from the park



# Environmental context

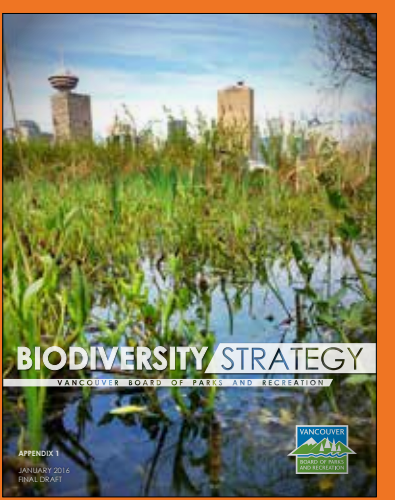
For more info:



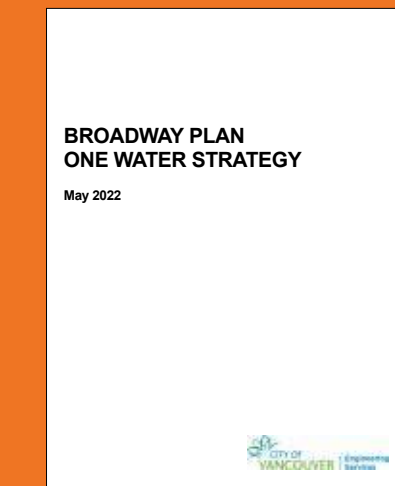
Vancouver Rain City Strategy



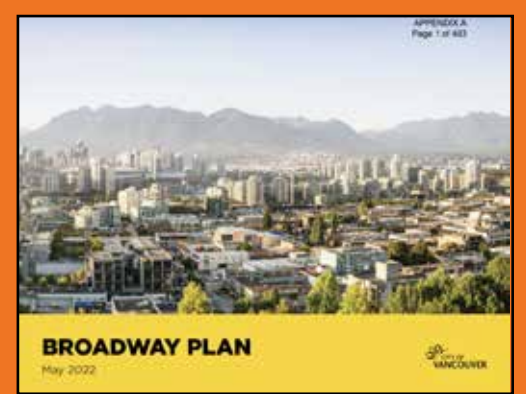
Vancouver Urban Forest Strategy



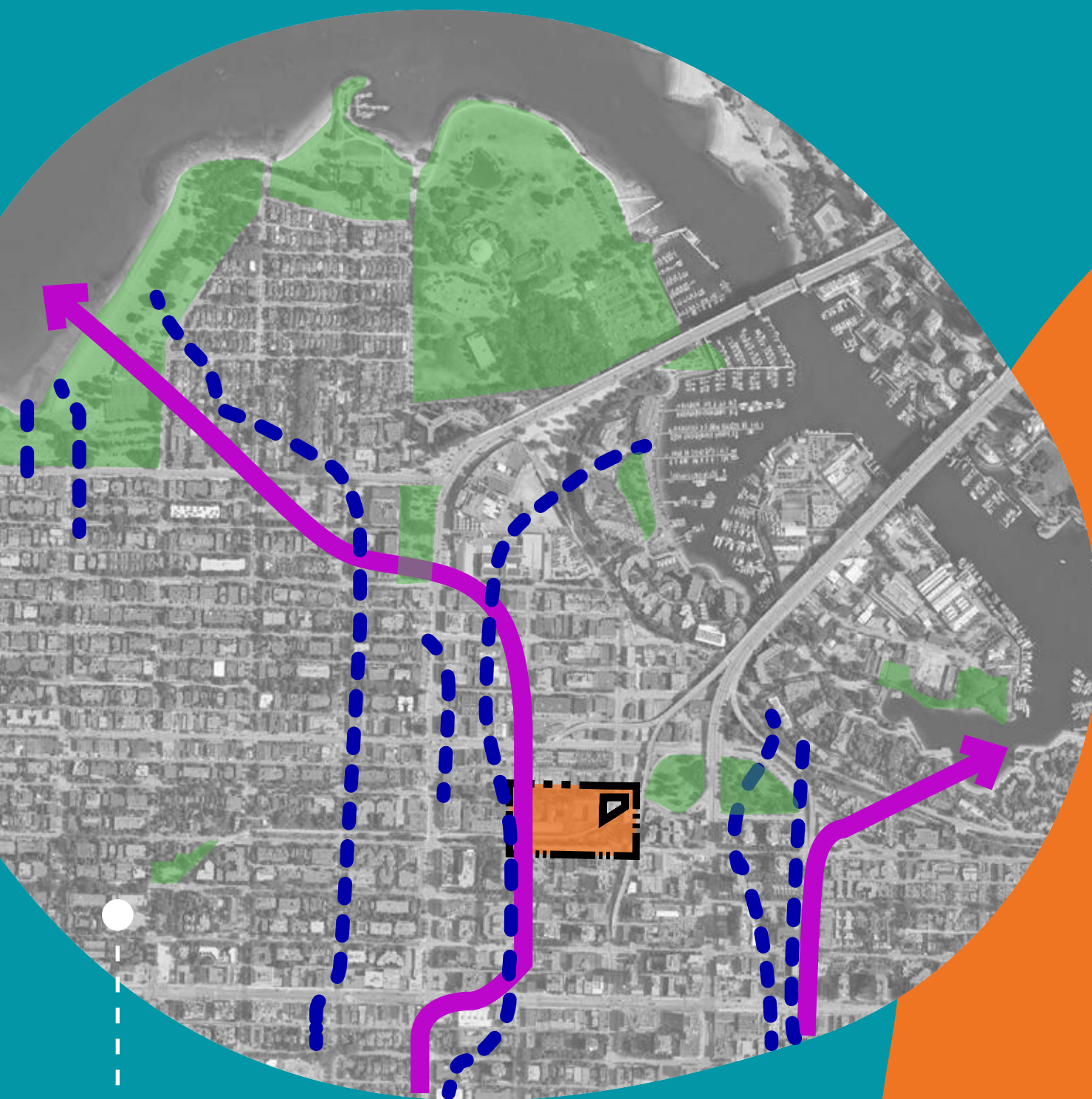
Biodiversity Strategy



Vancouver's Broadway Plan One Water Strategy



Vancouver's Broadway Plan



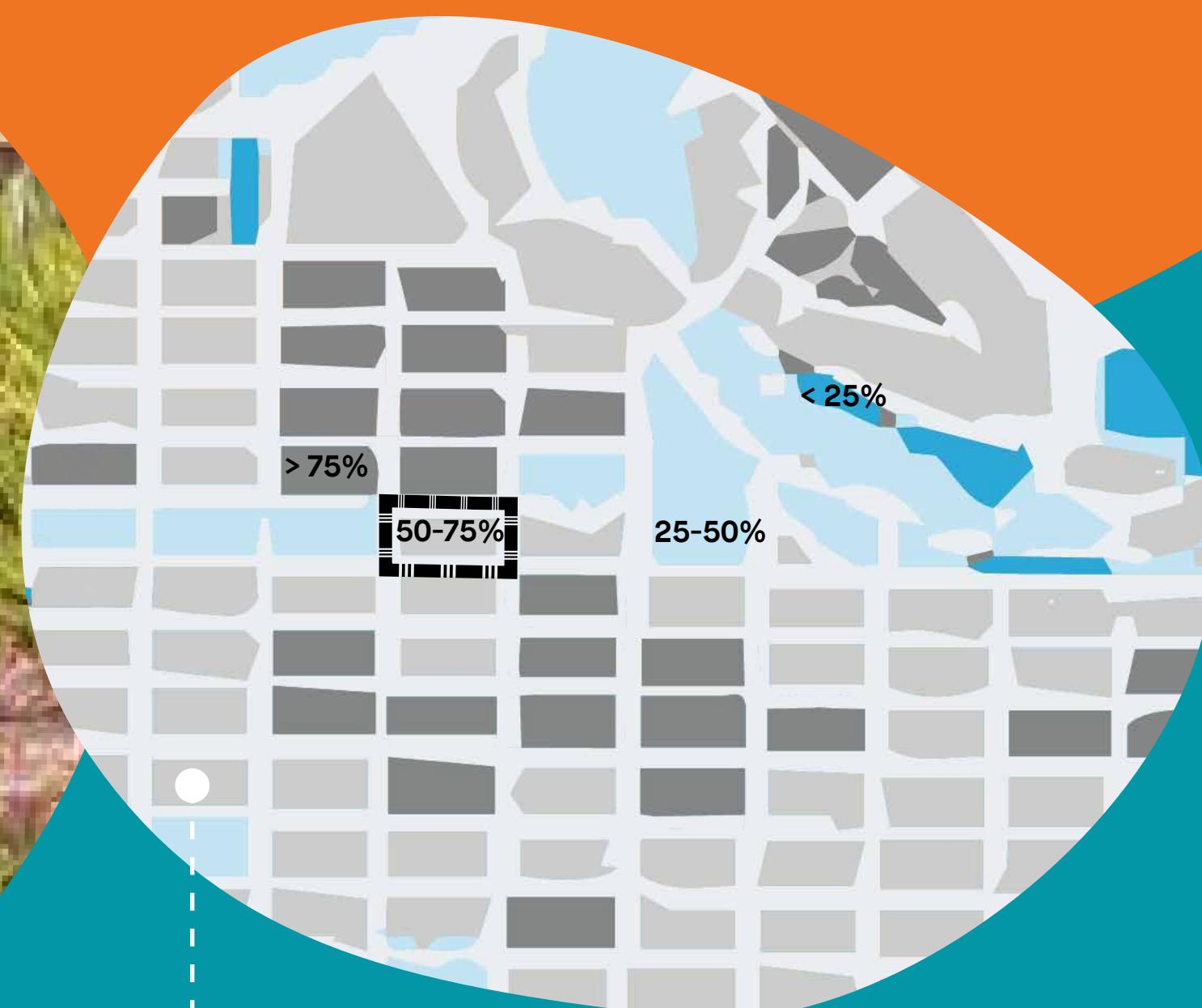
A lost stream, represented by the blue dashed line above, once ran along the west side of the site. The purple lines show major flow paths for rainwater runoff into English Bay and False Creek.

## Water

The Vancouver Rain City Strategy sets out the parameters for this park to capture and clean 90% of average annual rainfall on-site and from adjacent sites.

The park site has a high percentage (between 50-75%) of impermeable surfaces like concrete that do not allow rainwater to pass through. The planned removal of these buildings creates an opportunity to introduce ways to capture and clean rainfall in the park.

Incorporating green rainwater infrastructure where new plants can thrive will help reduce flood risk and enhance water quality, both on-site and for the greater watershed system.



Impermeability map from the Urban Forest Strategy

## Trees + plants

The whole neighbourhood was once covered with old growth rainforest, dominated by fir trees and rich with wildlife.

Today, the park site is largely covered by paving, with less than 5% tree canopy cover and below average street tree density.

- Planting more trees and other diverse and native vegetation will support the City's initiatives to reduce heat island effect, enhance biodiversity and provide wildlife habitat.



Urban Canopy Cover map from the Urban Forest Strategy



# Neighborhood context

For more info:



Fairview & Kitsilano Neighbourhood Social Indicators Profile 2020

VanPlay

## More green space for growing neighbourhoods

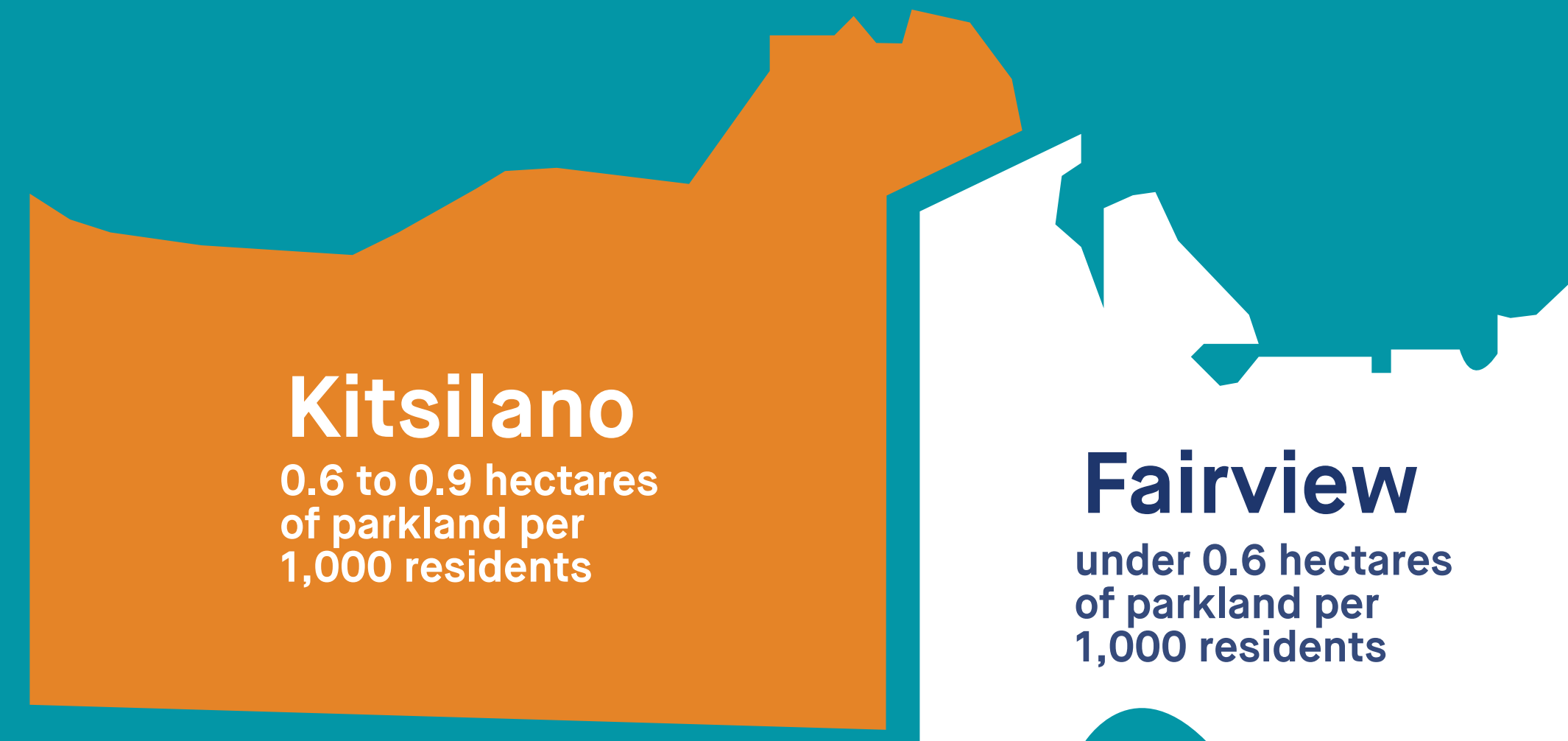
Both the Fairview and Kitsilano neighbourhoods have a high population density compared to the rest of the city. With the implementation of the Broadway Plan over the coming decades, the area will increase in resident, worker, and visitor numbers. Burrard Slopes Park will become highly sought after by people seeking outdoor green space to relax and connect in.

The amount of park space per resident is low in this area, compared to the Vancouver average.

Almost all residents in Fairview (99%) and most in Kitsilano (96%) live in higher density housing such as apartments or rowhouses.

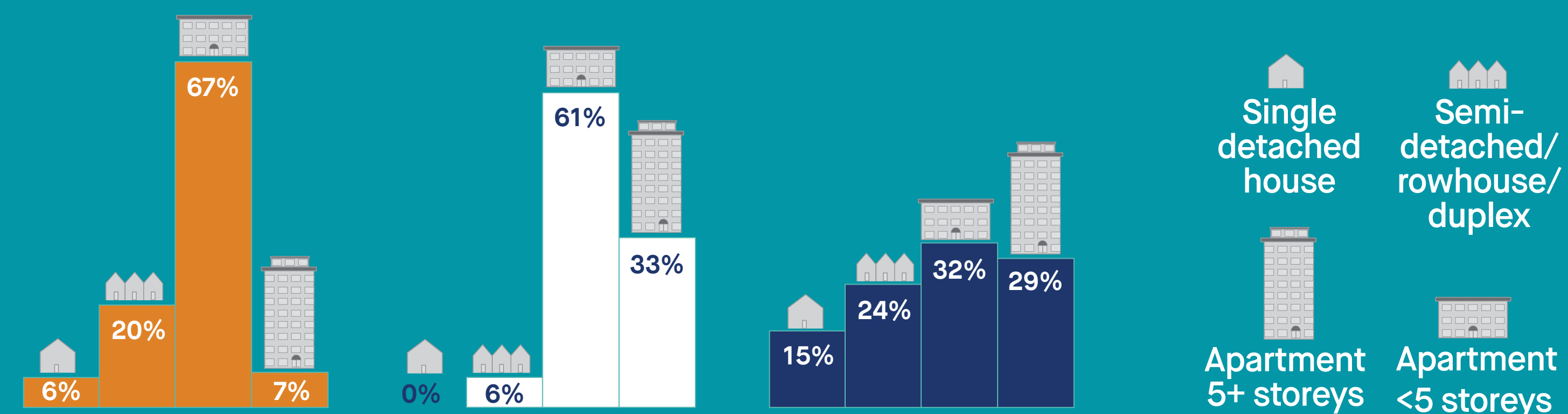
- Living closely together like this means we need nearby parks that are safe and inclusive outdoor spaces for people to recreate, socialize and enjoy the outdoors.

### Density and parkland



Fairview has some of the lowest park provision in the city. In 2017, the citywide average was 1.06 hectares of parkland per 1,000 residents.

### Type of Housing



### Population density (per hectare)



### Neighbourhood Legend



Sources:  
Fairview Neighbourhood Social Indicators Profile 2020  
Kitsilano Neighbourhood Social Indicators Profile 2020  
Census data 2016  
VanPlay Inventory and Analysis 2017

# Transportation and long-term planning context

For more info:



Vancouver's Transportation 2040 Plan



Future Arbutus to Seaside Connector



Vancouver's Broadway Plan

## A key meeting place for three important greenways

Greenways provide pedestrian, cycling and rolling connections to within the city. Burrard Slopes Park will become a meeting point for the existing Arbutus Greenway, future Granville Connector and future Arbutus-Seaside Connector. Improving connections to pedestrian and cycling paths will help support the increase in foot traffic and active transportation modes.

How can the future park design best respond to this opportunity?



Cycling and rolling on a greenway in the city



## Responding to the Broadway Plan

Burrard Slopes Park falls within the Broadway Plan study area. While the Broadway Plan is a 30 year area plan that covers housing, jobs, and amenities around the Broadway Subway, Burrard Slopes Park is one specific project happening within that area.

The Broadway Plan, along with other policies and feedback gathered through the Burrard Slopes Park planning process, will guide design decisions for the park.

To learn more about the Broadway Plan Public Realm and Streetscape work visit <https://shapeyourcity.ca/broadway-public-realm> (webpage launching September 28, 2023)

To learn more about the Broadway Plan and various implementation projects visit [vancouver.ca/broadwayplan](https://vancouver.ca/broadwayplan)

Artist's illustrations characterizing streets and public spaces from the Broadway Plan



# Future park features and initiatives

## Balancing competing needs

The future park design has the opportunity to provide space for everyday activities and events for all ages and abilities. The design will also include social and environmental initiatives and programming identified in city-wide policies and past and future engagement. Some of the identified priorities that could be included at Burrard Slopes are outlined on this page.

Balancing needs with priorities will be important going forward.

- This park will need to address many types of programming within a limited space.

Multi-functional covered space for skateboard/small wheeled sports, and stray space (VanPlay, Skateboard Amenities Strategy)



Food production garden (VanPlay, Local Food System Action Plan)

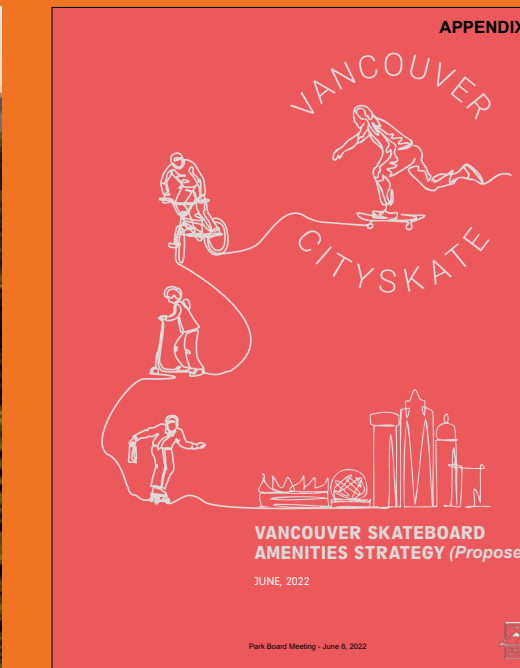


Play space to accommodate all ages and a wide range of abilities (VanPlay)

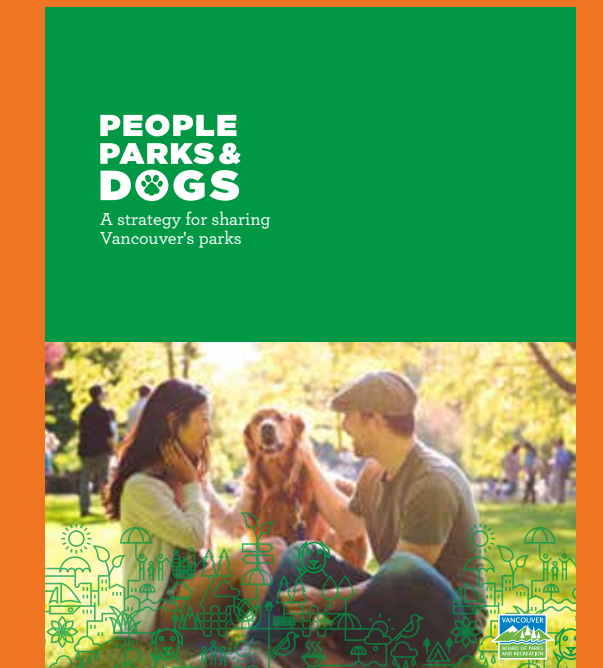
## Examples of city-wide policies shaping park design and priorities



VanPlay



Skateboard Amenities Strategy



People, Parks & Dogs



Parks Washroom Strategy



Biodiversity Strategy



Local Food System Action Plan

Park washrooms (VanPlay, Parks Washroom Strategy)



Small amenity for dogs (People, Parks and Dogs Strategy)



Passive/flexible space (VanPlay)



Green rainwater infrastructure (One Water and Rain City Strategy)





# Thank you!

Your input today will help us in understanding community values, needs and priorities for Burrard Slopes Park. This will in turn help inform the design vision and preliminary concept plans for the future park.

## Stay in touch!

Visit our project website for further updates and sign up for email list [vancouver.ca/parks-recreation-culture/burrard-slopes-park](http://vancouver.ca/parks-recreation-culture/burrard-slopes-park)

Drop us a line at:  
[burrardslopes@vancouver.ca](mailto:burrardslopes@vancouver.ca)



Scan this QR code to complete the survey!

Have a question? Email [burrardslopes@vancouver.ca](mailto:burrardslopes@vancouver.ca)