

# There's a new park coming to Fairview and Kitsilano!

The Vancouver Park Board is planning a one hectare park located between two fast-growing neighbourhoods of Fairview and Kitsilano.

The new Burrard Slopes Park\* will bring much needed green space to residents, workers and visitors alike. Its design will need to support city-wide initiatives related to Reconciliation, sustainability, park activities and resilience.

We need your input regarding the draft concept plan for Burrard Slopes Park.

The site is within the shared and unceded *xʷməθkʷəy̓əm* (Musqueam), *Sḵw̓x̓wú7mesh* (Squamish), and *səlilwətał* (Tsleil-Waututh) territories.

\*Burrard Slopes Park is a temporary name and we plan to identify an official park name through a separate process.



Aerial image showing the existing park site.



Scan this QR code to complete the survey!

Have a question? Email [burrardslopes@vancouver.ca](mailto:burrardslopes@vancouver.ca)

BURRARD SLOPES PARK  
ROUND 2 ENGAGEMENT  
APRIL 9–APRIL 30, 2025

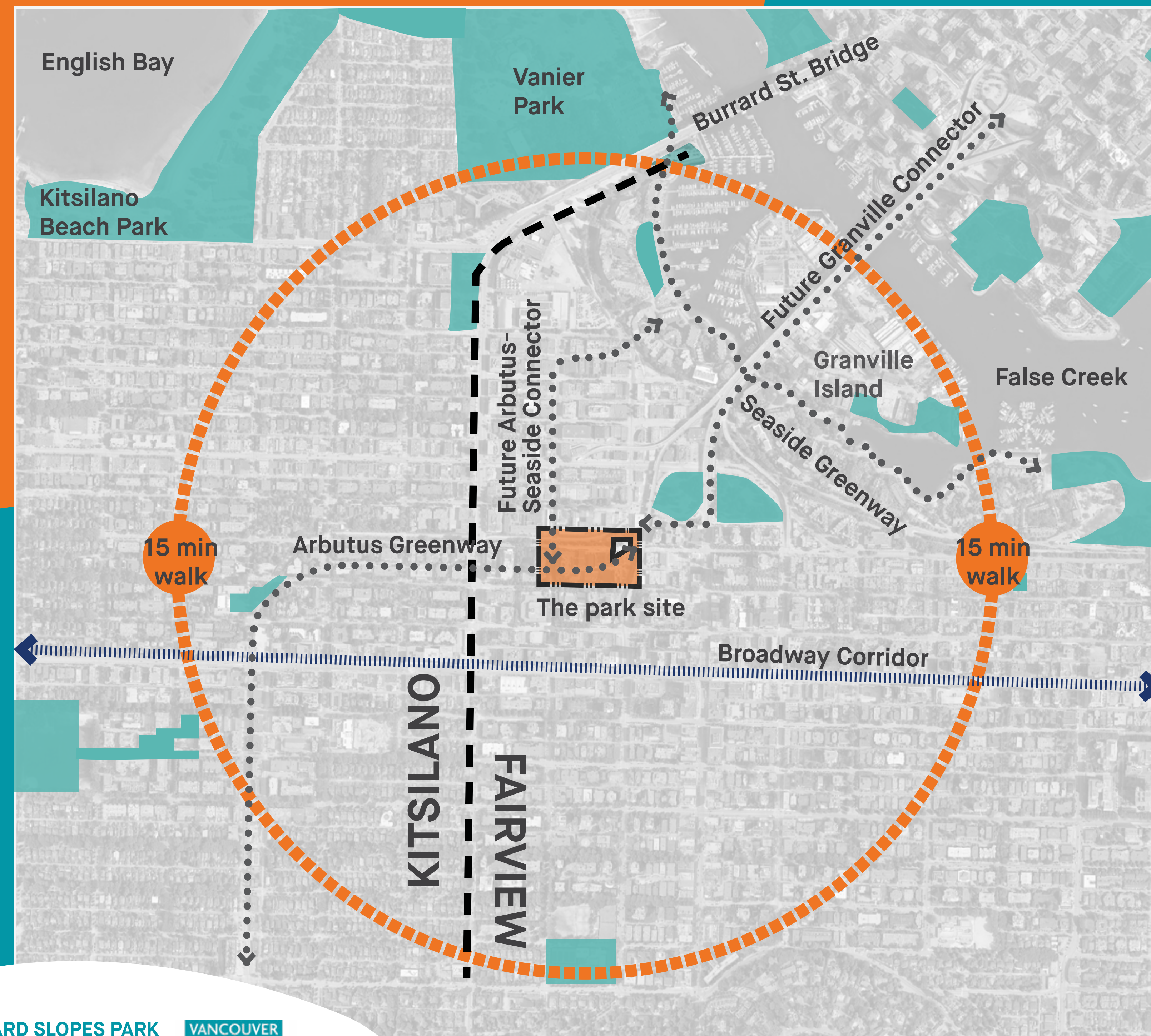


[shapeyourcity.ca/burrard-slopes-park](https://shapeyourcity.ca/burrard-slopes-park)



# Overview

The park's project area is between Pine and Fir streets and W 5th and 6th avenues.



Existing parks

## Project timeline

2023

Project start-up and site analysis

Spring through summer

Launch first public engagement to gather input on vision, values, needs and preliminary design ideas

Fall

2024

Analyze feedback received, complete needs assessment and develop design concepts

Fall through winter

2025

We are here

Launch second public engagement to gather input on draft concept plan

Spring

Preferred concept plan development

Summer through fall

Final concept plan presentation to the public and the Park Board

Fall



# What we heard in round 1 engagement

## Highlights

From September 26 to October 15, 2023, the Park Board sought input from Vancouver residents and local businesses about their values, needs, and priorities for the future Burrard Slopes Park. This engagement took place through a virtual survey and in person at a pop-up event within the park.

The information gathered has helped to shape a vision and program for the park, as well as design direction.

The public was notified of the engagement process through posters in parks and community centres, social media, online advertising, mailing lists, and a media release.



**875**  
Survey responses



**5396**  
Postcards distributed



**700+**  
Launch emails



**110**  
Pop-up attendees

On October 7, 2023 we hosted an in-person drop-in event at Burrard Slopes Park. Over 110 participants joined us to review the boards and to share their priorities for the park.



**BURRARD SLOPES PARK**  
ROUND 2 ENGAGEMENT  
APRIL 9-APRIL 30, 2025



[shapeyourcity.ca/burrard-slopes-park](https://shapeyourcity.ca/burrard-slopes-park)

## Key findings

I imagine this park to be...



## How would you like to use this park?



### Top passive uses:

- Relax, sit, and rest
- Eat lunch or take a coffee break
- Socialize with friends

### Top active uses:

- Skateboard, rollerblade, or roller skate
- Play at playground
- Play or exercise on lawn

Participants would like to see a balance of passive and active recreation options for all ages and abilities.

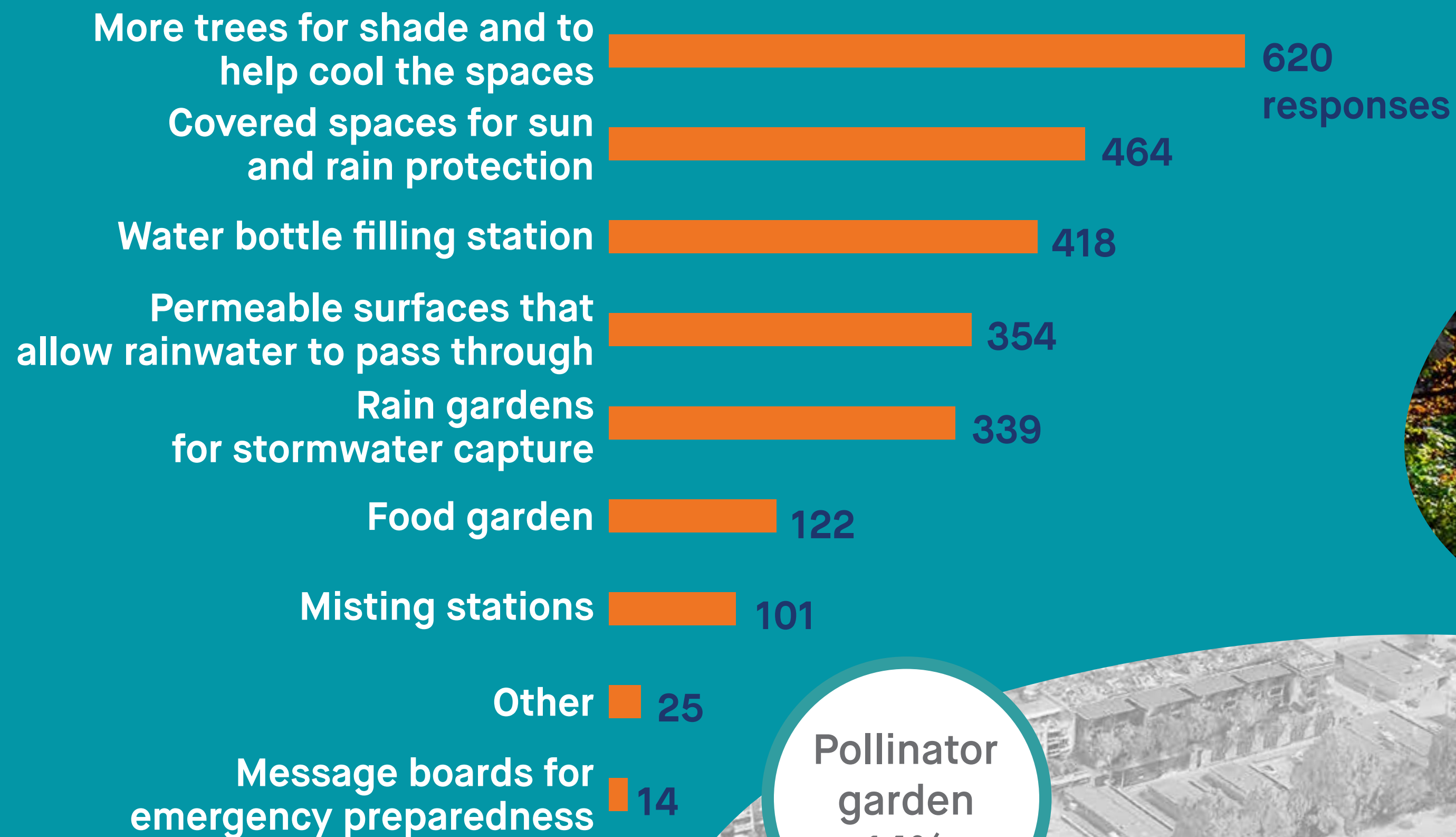




# What we heard in round 1 engagement

## Key findings

### What kind of climate change mitigation would you like to see?

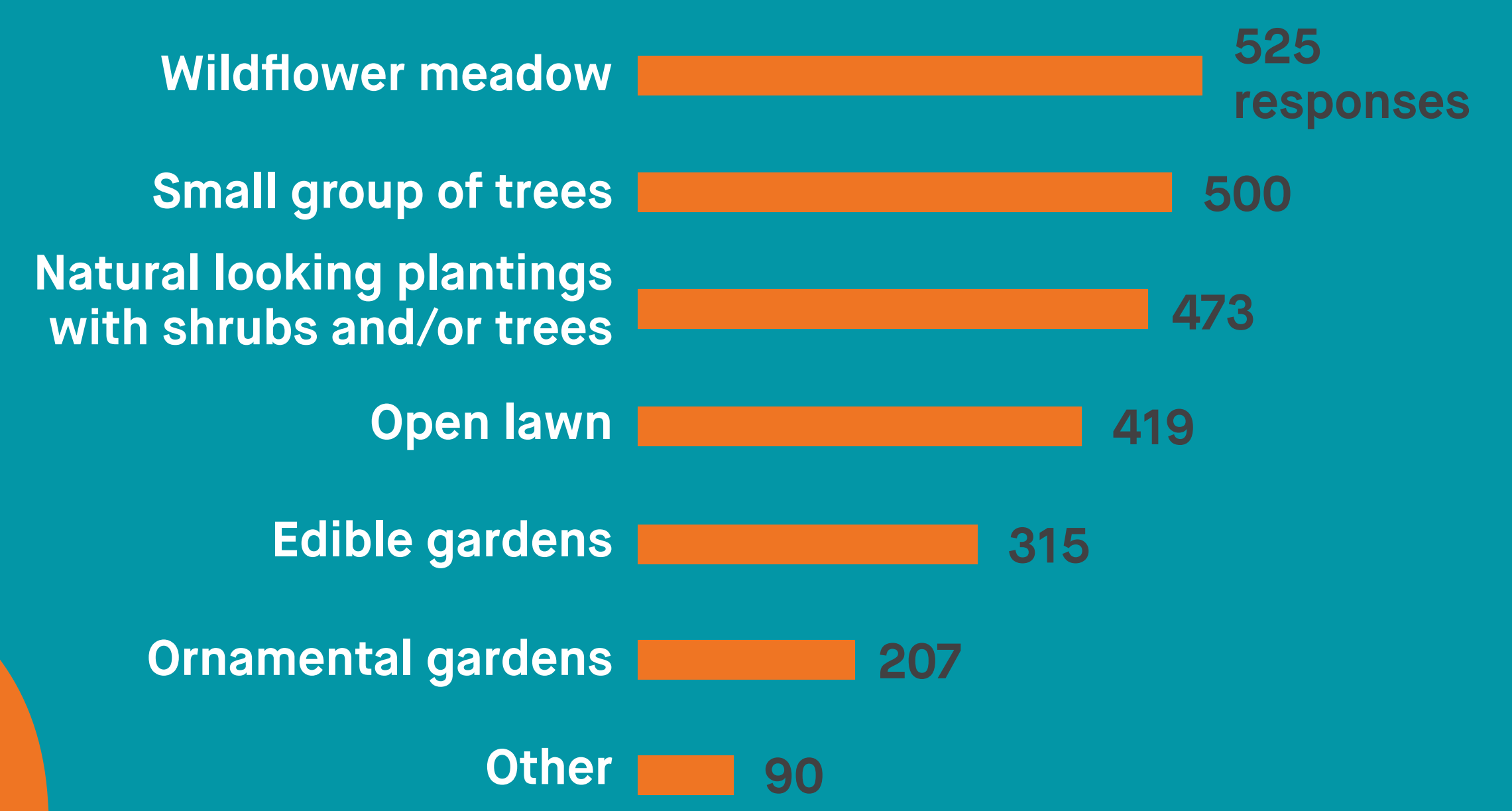


Most respondents prefer naturalistic plantings to more formal gardens



Which existing park spaces do you use when you visit the project area? (Select all that apply\*)

### Most popular types of green space respondents would like to see incorporated in the park:



\*Percentages do not add up to 100% as respondents could choose more than one answer. Percentages correspond to how many respondents chose a particular answer.



# Park vision

The vision statement and design principles were developed based on the input we received in the first round of engagement. These will guide the design for the future park.

## Vision statement

*Burrard Slopes Park will be a warm and welcoming community gathering place for all ages.*

*It will be a refreshing green oasis to enjoy every day and throughout the seasons.*

*The park will be a place to enjoy walking, rolling, playing, socializing, relaxing, gardening and more.*

## Design principles

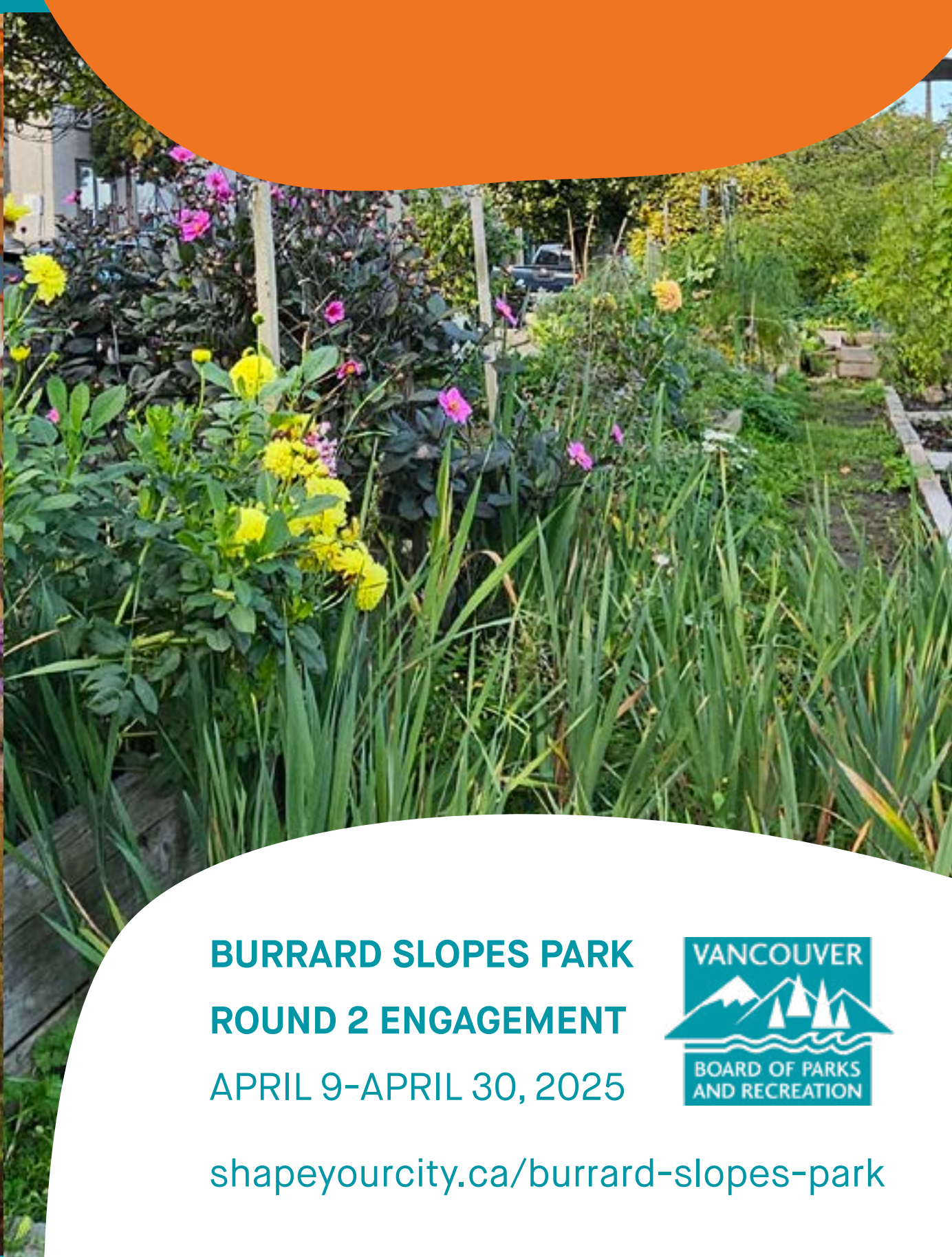
Circulation across and throughout the park will be intuitive, accessible and enjoyable.

The park will feel safe and comfortable at all times of day.

There will be a balance of passive and active recreation options for all ages and abilities.

Visitors will be able to enjoy a variety of green spaces that support health and wellbeing.

The park will be an ecological haven for insects, animals and people to thrive in.



BURRARD SLOPES PARK  
ROUND 2 ENGAGEMENT  
APRIL 9–APRIL 30, 2025



[shapeyourcity.ca/burrard-slopes-park](https://shapeyourcity.ca/burrard-slopes-park)

© Geoff Peters, <https://www.flickr.com/photos/gpeters/5045979145/>



# Draft concept plan

Following the first round of engagement, we assessed the needs and priorities for the park based on community input and overall municipal goals. Through this process, we developed the concept plan below, illustrating the proposed park elements and necessary space required.



\*\*Two options for the playground expansion have been developed. Please see the "Playground expansion" boards and let us know what you think!

Concept plan is subject to the Local First Nations' input, Board decisions, public engagement results and project budget.

\*Arbutus Greenway design may modify to allow fire truck access

1:1000



# Park activities

The park design aims to provide a desirable balance of passive and active uses, responding to diverse community needs and fulfilling key design principles set for the project.

## Skatepark



© Scott Dreams of Skateparks

A plaza style skatepark is surrounded by planted hills to create a safe buffer from other park activities. The facility will be designed to encourage all wheels and all levels of users. It includes flat areas which could also be used for events. Surrounding pathways and seating areas invite park visitors to comfortably watch the activity.

## Playground expansion



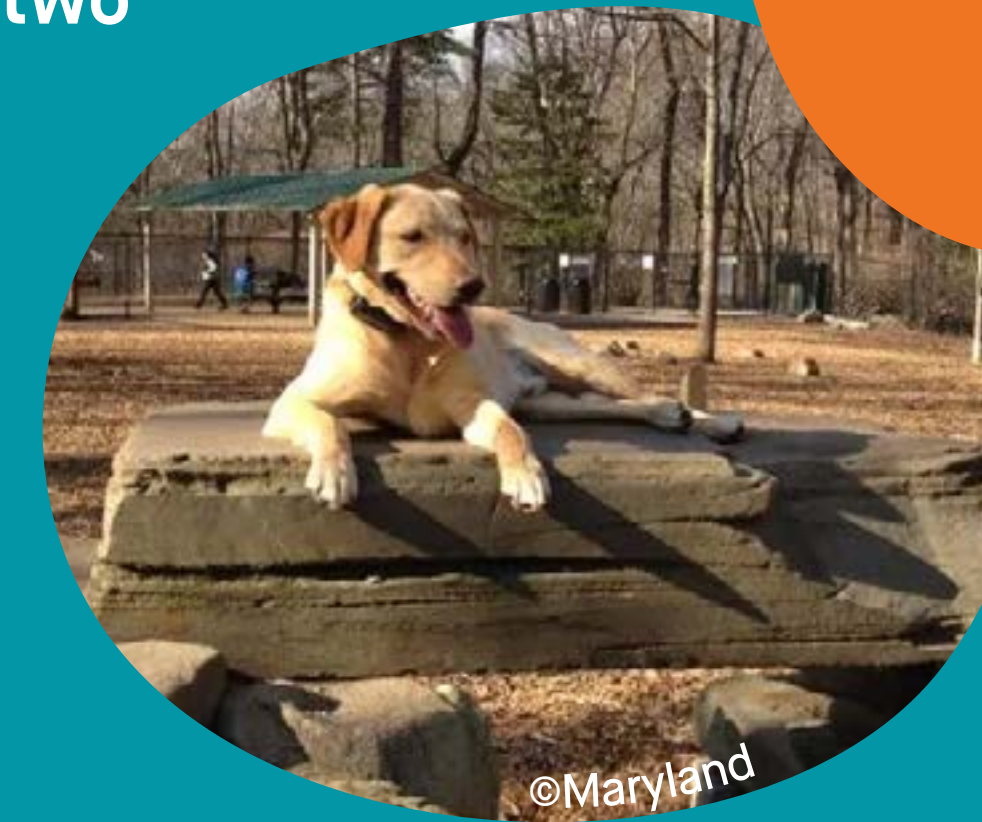
© KOMPAN



© PlayCore

New play equipment provides additional elements with focus on increasing inclusivity for visible and invisible disabilities. See "playground expansion" boards for more information on the two options for this area.

## Dog off-leash area



© Maryland

Enclosed dog off-leash area provides agility features made from reclaimed timber and natural boulders. It includes an accessible pathway and many seating opportunities for dog owners. Surrounding pathways allow visitors to observe activity in the dog off-leash area.

## Flexible space/ open lawn



© Christopher Postlewaite



© Hertha Hernaus

Lawn is open to allow for informal recreation, but also treed around edges to provide shade.

## Social spaces



© Tim Street-Porter



© Streetlife

Picnic tables, curved and standard benches and seating boulders create spaces to rest, socialize and play.



© Debi Bower



Key plan



# Gardens in the park

Creating new gardens, planting more trees and native vegetation will help reduce heat island effect, enhance biodiversity, provide wildlife habitat, capture rainwater and increase urban tree canopy. These initiatives will directly support the City's and Park Board's various environmental and rainwater targets and goals.

## Rain gardens

Rain gardens store, clean and absorb rainwater which soaks into the ground, reducing the pressure on utility pipes. They also provide valuable habitat for pollinators, birds and insects, offering educational benefits to the public. There is a policy requirement for the park to capture and clean a minimum of 90% of the average annual rainfall on-site.



## Gardens with native and adaptive planting

Peripheral gardens help to define different activity zones in the park, as well as primary access points. The use of native and adaptive plant species supports local biodiversity and minimizes maintenance needs.



## Trees and shade

Large tree species and forest pockets are planted throughout the site to provide cooling and habitat benefits to the park.



## Pollinator gardens

Pollinator gardens provide a quiet space for park users with opportunity for education. They also add ecological value and beauty to the park.

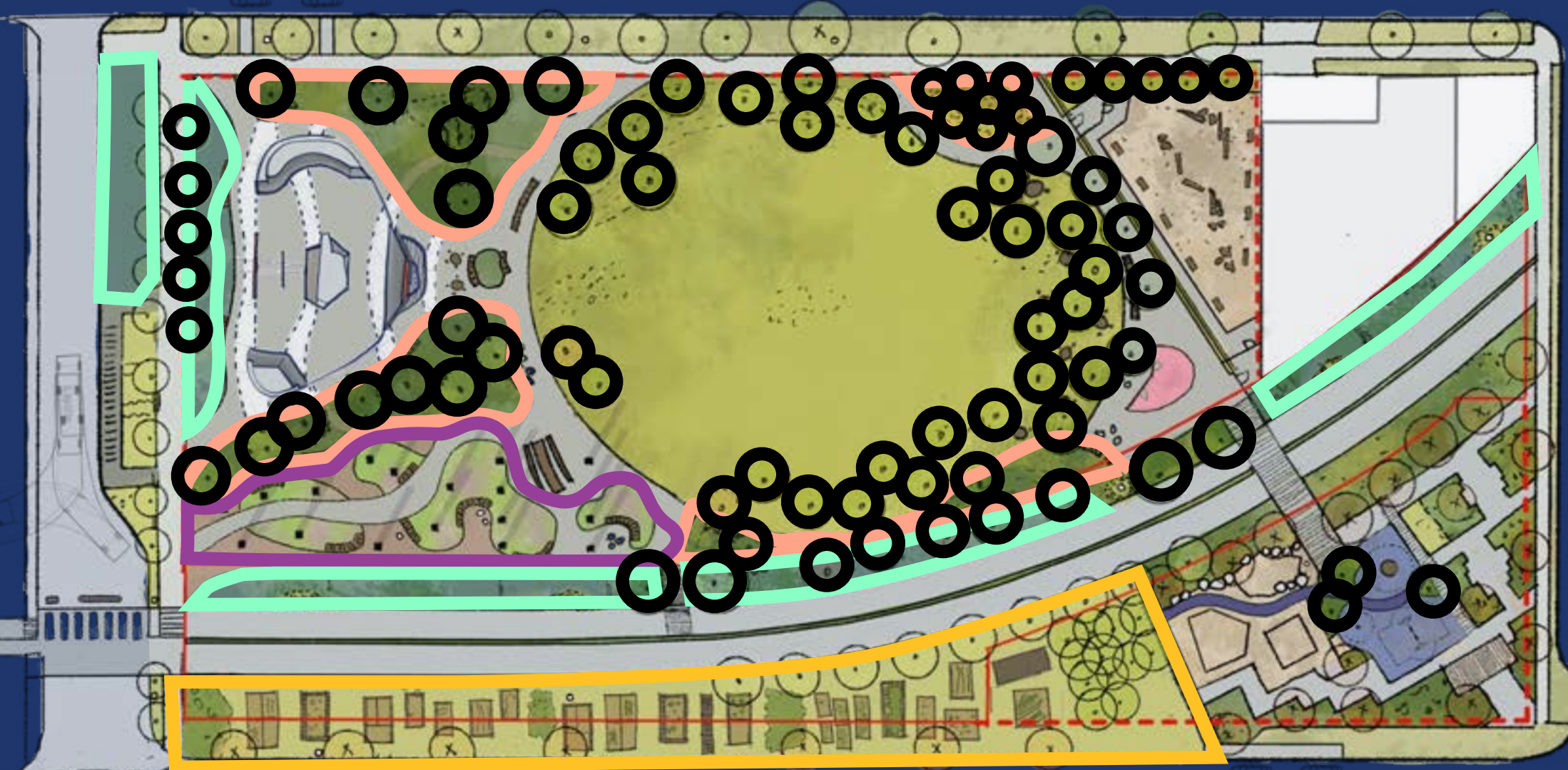


## Community gardens

The beloved existing Pine Street community gardens will remain in place. Overall park improvements will be thoughtfully integrated with the community gardens.



Key plan





# Park amenities



**Spaces to support events**

The open lawn, small paved areas along the surrounding walkways, and the skatepark can support small events and gatherings.



**Pathways**

Universally accessible pathways connect the spaces within the park.

**Mobi station**

A Mobi station on the west side of the park will provide access to bikes.

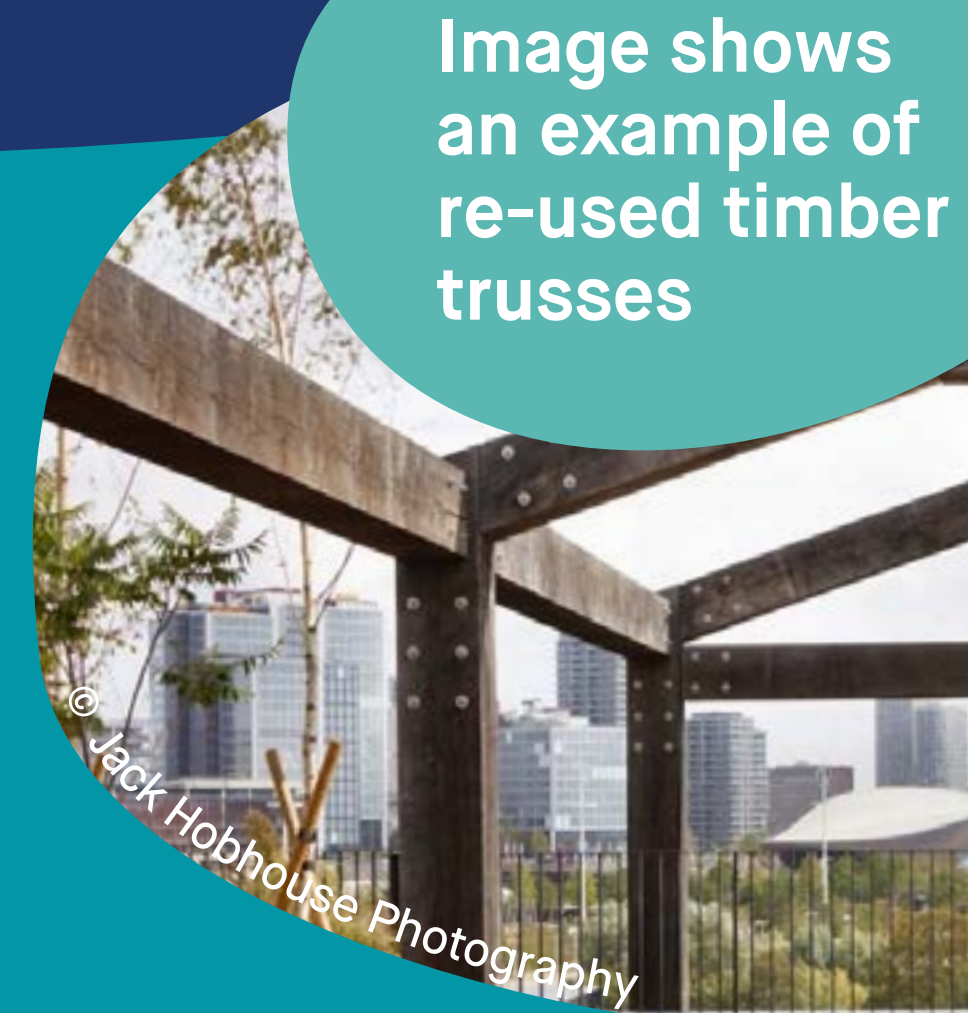


Image shows an example of re-used timber trusses

**Accessibility features**

Accessible parking

Play expansion and pathway connections will be accessible for all abilities and ages. Accessible parking spaces will also be provided.



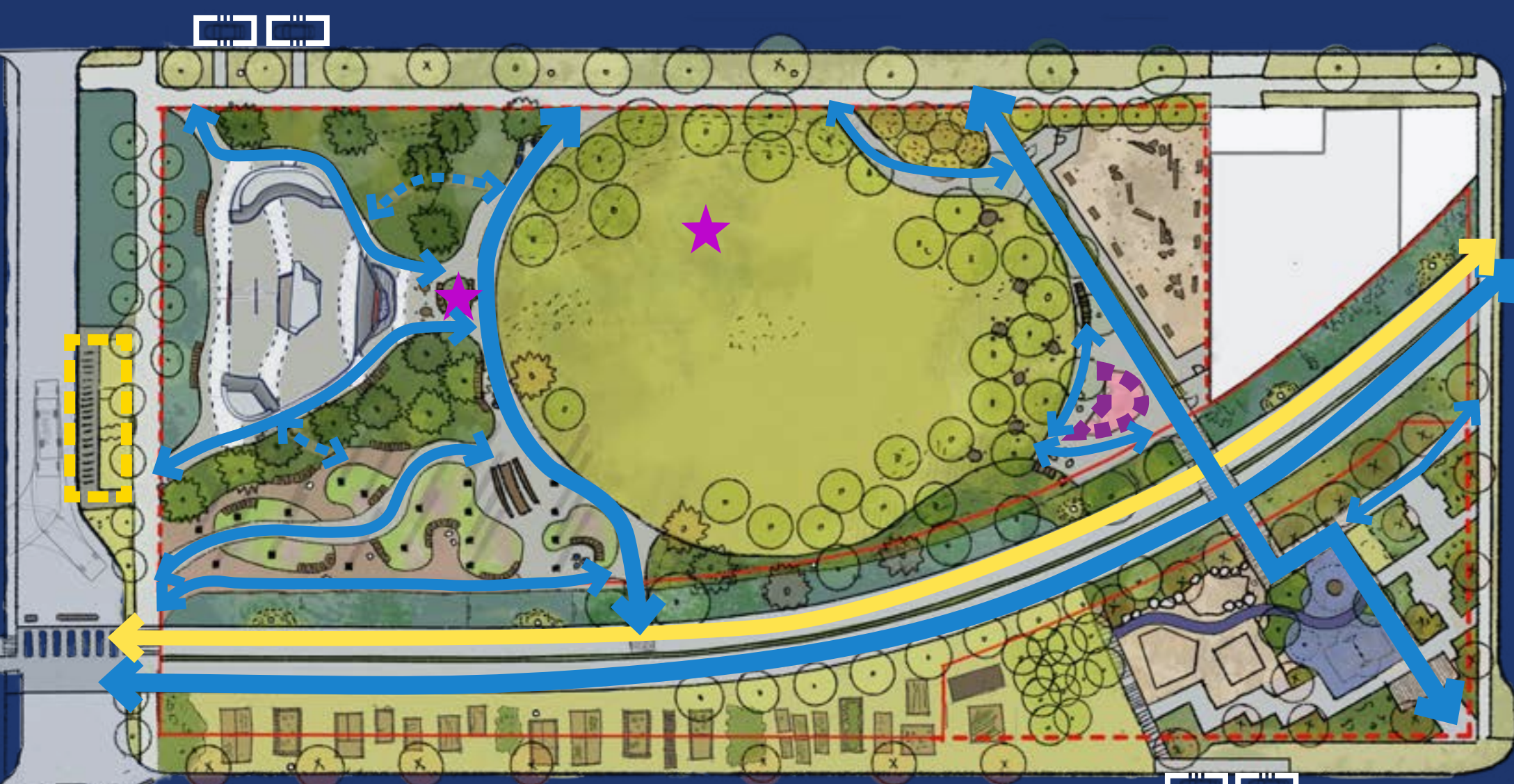
**Washrooms**

A washroom building with two to three universal stalls.



**Comfort and wellbeing**

Shade trees and a variety of seating options make the park spaces more comfortable for park users.



Key plan

↔ Bike path

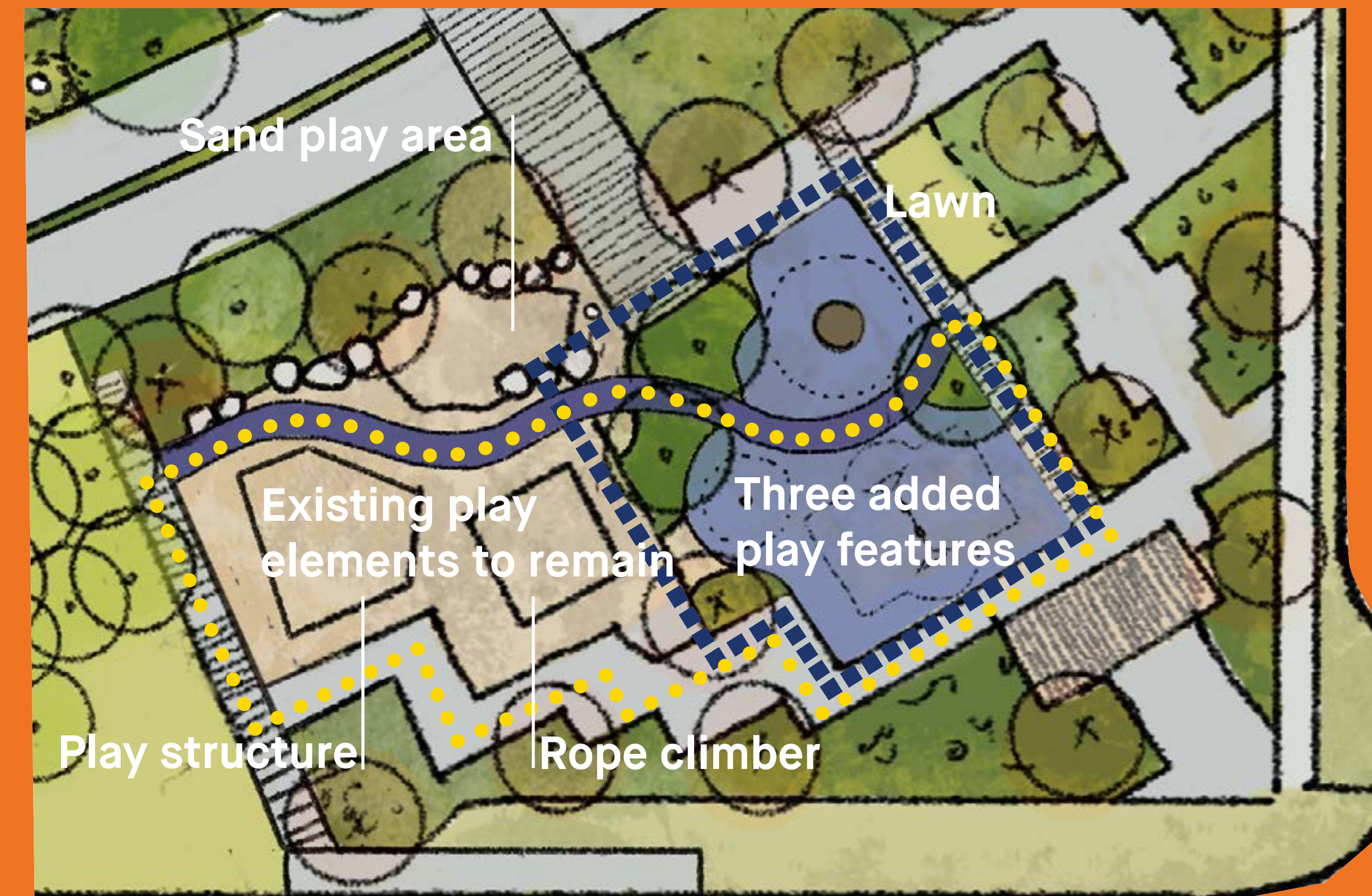


# Playground expansion: layout



**Option 1**

play area expansion



**Option 2**

circuit for wheeling play area expansion

There is an opportunity to expand the playground into the existing adjacent lawn area, adding additional features to enhance accessibility and inclusivity. There is also a large green space proposed north of the Arbutus Greenway that can also be used for informal play.

In Option 1, the proposed expansion includes two new play features and retains a small portion of the existing lawn.

In Option 2, the proposed expansion includes three new play features and a circuit for wheeling. No significant lawn area is retained in this option.

Both options include new trees for shade.

Includes:

Two added play features

Small lawn

Includes:

Three added play features

Circuit pathway\*



\*Circuit pathway allows kids to use scooters and tricycles on a continuous path through playground.



# Playground expansion: play features

Existing sand play area

Sensory and imaginative play

Existing play features will stay!

Additional play elements will be added here



Existing play structure

Sliding and climbing

Existing rope tower

Climbing



Playground equipment can use different kinds of movement to help kids build motor skills, social skills and more while having fun. A variety of options for movement allows children of all abilities to find something fun to play with. The addition of rubber surfacing also makes the playground wheel friendly.

BURRARD SLOPES PARK  
ROUND 2 ENGAGEMENT  
APRIL 9-APRIL 30, 2025



[shapeyourcity.ca/burrard-slopes-park](http://shapeyourcity.ca/burrard-slopes-park)

Depending on which layout option is selected, two or three new pieces of play equipment may be added. Potential play features to be added:

Swing set

Swinging individually



Bucket spinner

Spinning individually



Rope nest swing

Swinging together



Universal spinner

Spinning together



Boogie board

Balancing



Jumping

Seesaw





# Dog off-leash area and picnic area

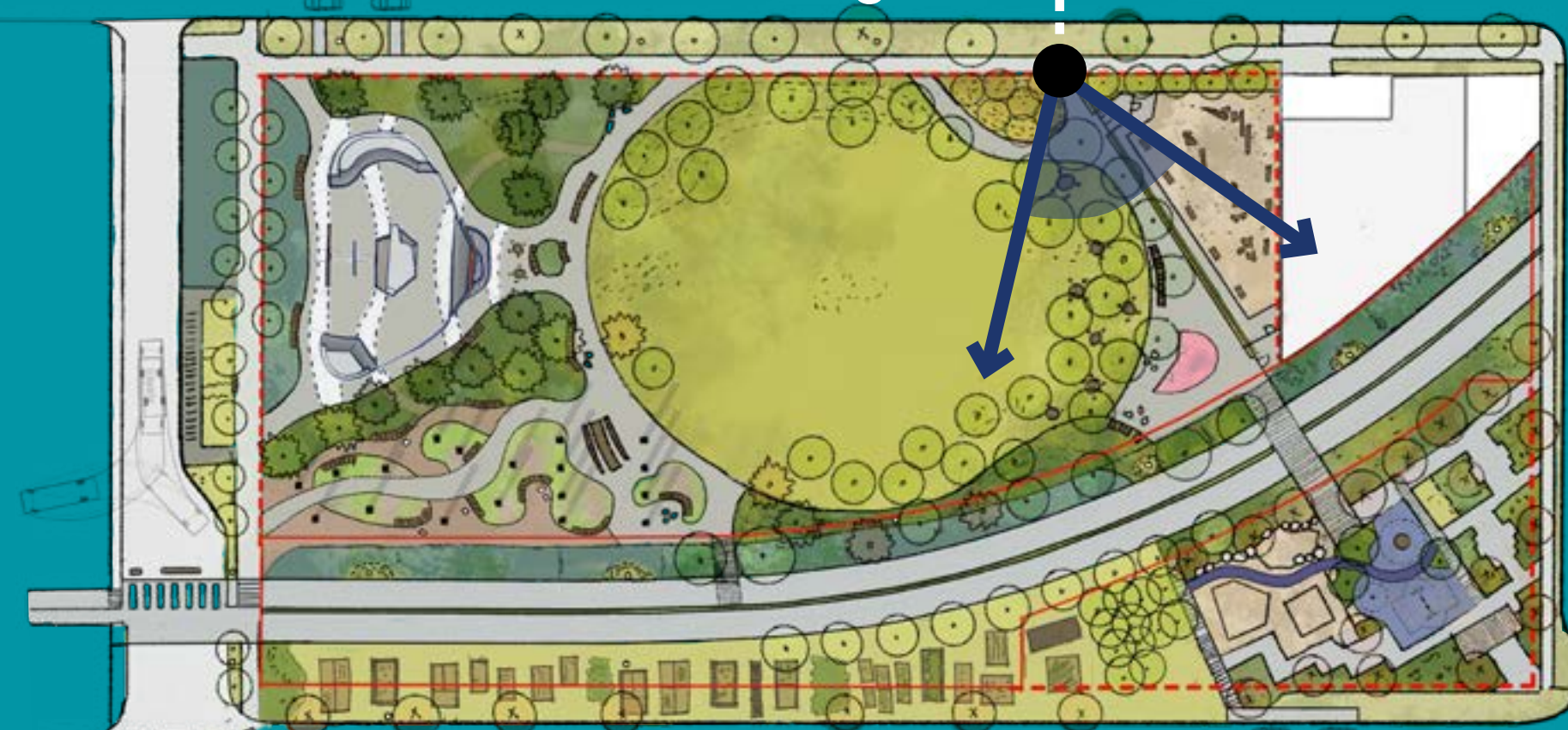


We are creating a new gateway to enter the park from W 5th Ave, connecting visitors to the playground, gardens, and new washroom facility. This path will go between a new fenced-in dog off-leash area (OLA), flexible open lawn and picnic area.

The new OLA and washroom facility will meet the priorities outlined in the Park Board's "[People, Parks and Dogs](#)" and the "[Parks Washroom Strategy](#)" policy documents.

Shaded seating and passive recreational spaces respond to the community's requests from the first round of engagement.

Person's view standing here :



© SITELines

OLA provides fenced space for dogs to run and play as well as boulders and logs for agility training.



© City of Santa Ana

Wide curved walkways provide shaded walking routes as well as paved space for gathering.



# Gardens and central lawn



The southwestern corner of the park offers a variety of garden spaces – for food production, pollination and rainwater filtering – that visitors can interact with or simply enjoy the sensory experiences. At the centre is a large dining table for social experiences.

This design approach aligns with the vision for the park to be a 'green oasis', as well as reflecting the top four priorities we heard from the community in round 1 of engagement: a place to relax, take a coffee break, socialize with friends, and enjoy nature and feature gardens.

In addition, the various gardens support City and Park Board's policies outlined in the [Biodiversity Strategy](#), [Local Food System Action Plan](#), [VanPlay](#), [Rain City Strategy](#), [Urban Forest Strategy](#), [Broadway Plan](#), [One Water Strategy](#) and more.



Bird's eye view from this point



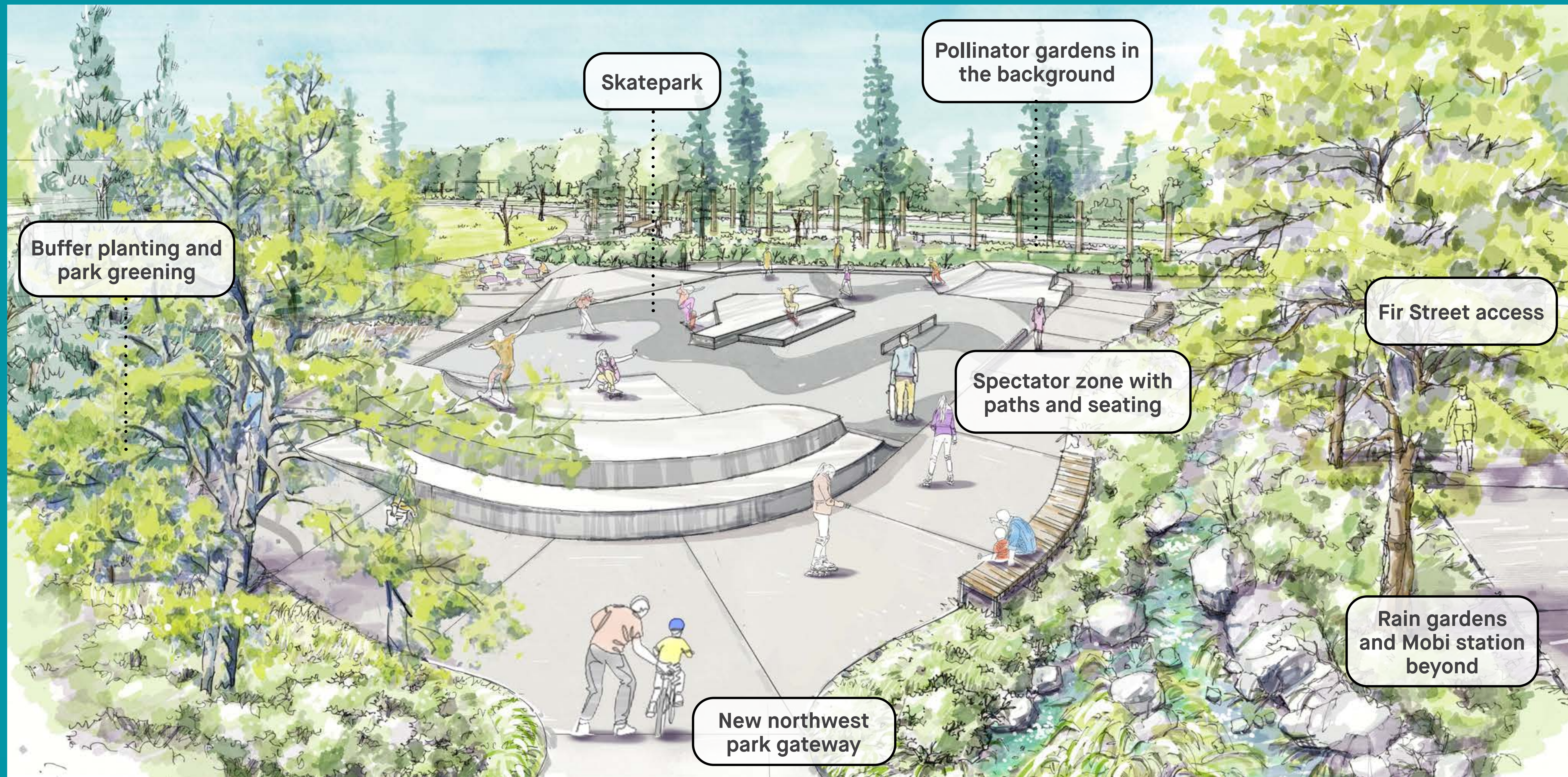
Benches follow the curvy shape of the pollinator garden to create areas for social seating.



A community 'room' is created through a large harvest table at the east end of the pollinator gardens overlooking the lawn.



# Skatepark



Pollinator gardens in the background

Skatepark

Buffer planting and park greening

Fir Street access

Spectator zone with paths and seating

Rain gardens and Mobi station beyond

New northwest park gateway

To respond to the City's **Skateboard Amenities Strategy**, the park design includes a new skatepark. It has been strategically located on the northwest corner, nestled among taller and thicker planting beds to help mitigate noise and to create a greener environment overall for an enhanced skating and wheeling experience.

The proposed skatepark design includes a variety of approachable features that are accessible to a range of user abilities and spread out so that the space can have a multi-functional purpose, doubling as a spill out zone during public events.

Bird's eye view from this point



© Scott Dreams of Skateparks

The skatepark provides space for skateboarding and other small wheeled activities (i.e. BMX biking, roller skating, scootering etc.). Nearby benches and picnic tables create space for spectators.



© Raimond Spekking / CC BY-SA 4.0

Buffers with mounded planting separate the skatepark from the other park spaces and help mitigate noise.



# Next steps

## What's next?

We thank you for your participation today and throughout the full project process to date!

The proposed concept plan will be further refined based on community feedback and presented to the Park Board, in the spring of 2025.

Once approved, the concept plan will be developed to a detailed design level with the anticipation of breaking ground in 2027.

## Take the survey!



## Contact us!

[burrardslopes@vancouver.ca](mailto:burrardslopes@vancouver.ca)

## Stay informed!

Keep up to date on next steps for Burrard Slopes Park by signing up for updates or visiting the project webpage at:

<https://www.shapeyourcity.ca/burrard-slopes-park>



**BURRARD SLOPES PARK**  
**ROUND 2 ENGAGEMENT**  
APRIL 9–APRIL 30, 2025



[shapeyourcity.ca/burrard-slopes-park](https://www.shapeyourcity.ca/burrard-slopes-park)