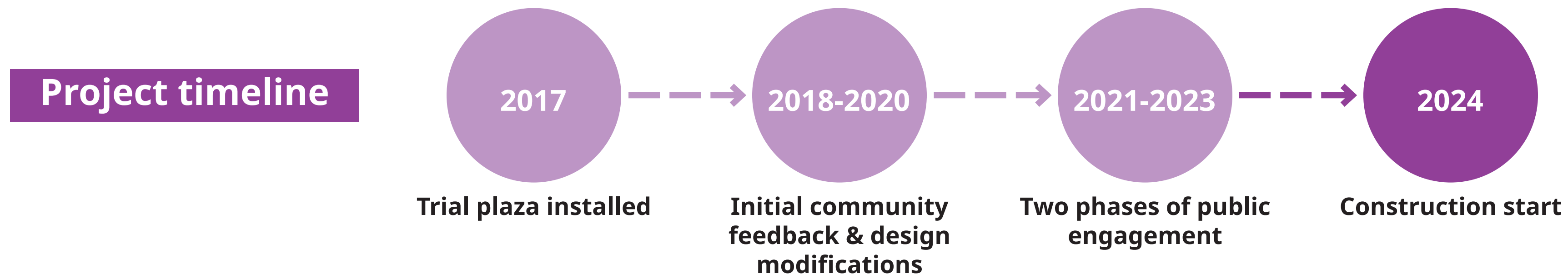


1

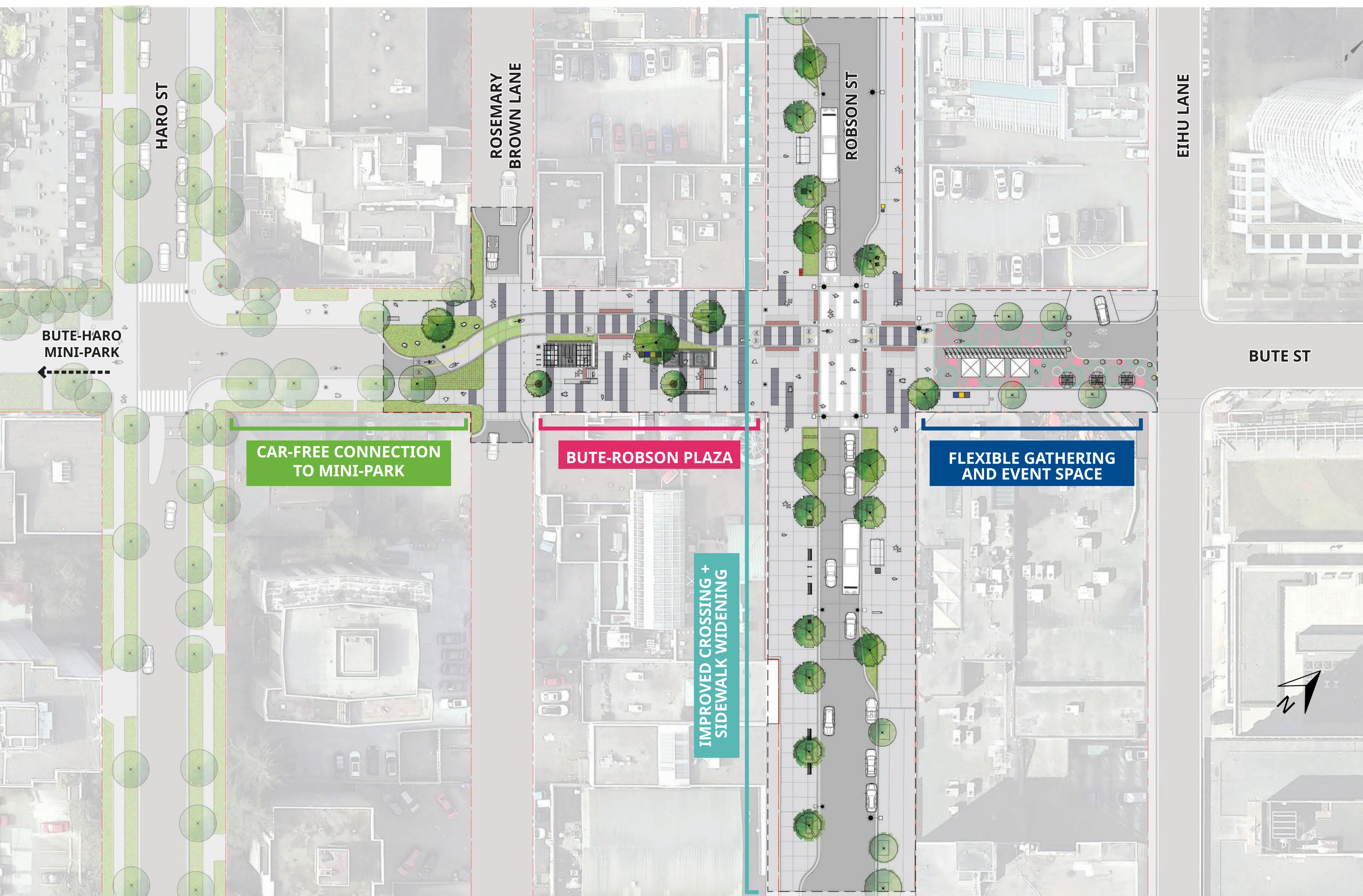
Construction of the permanent Bute-Robson Plaza will begin in 2024

Thank you to everyone who shared their feedback through the design process. This design:

- Builds on the successes of the interim Plaza
- Helps address the downtown public space deficit
- Has been refined based on input from businesses, stakeholders and the wider community



This represents the first delivery phase for the Bute Greenway. Construction covers the Bute-Robson Plaza, the adjacent half-blocks, and wider sidewalks on Robson Street. Staff are currently reviewing opportunities for future delivery phases.



The design has been refined through engagement to ensure community needs are met:

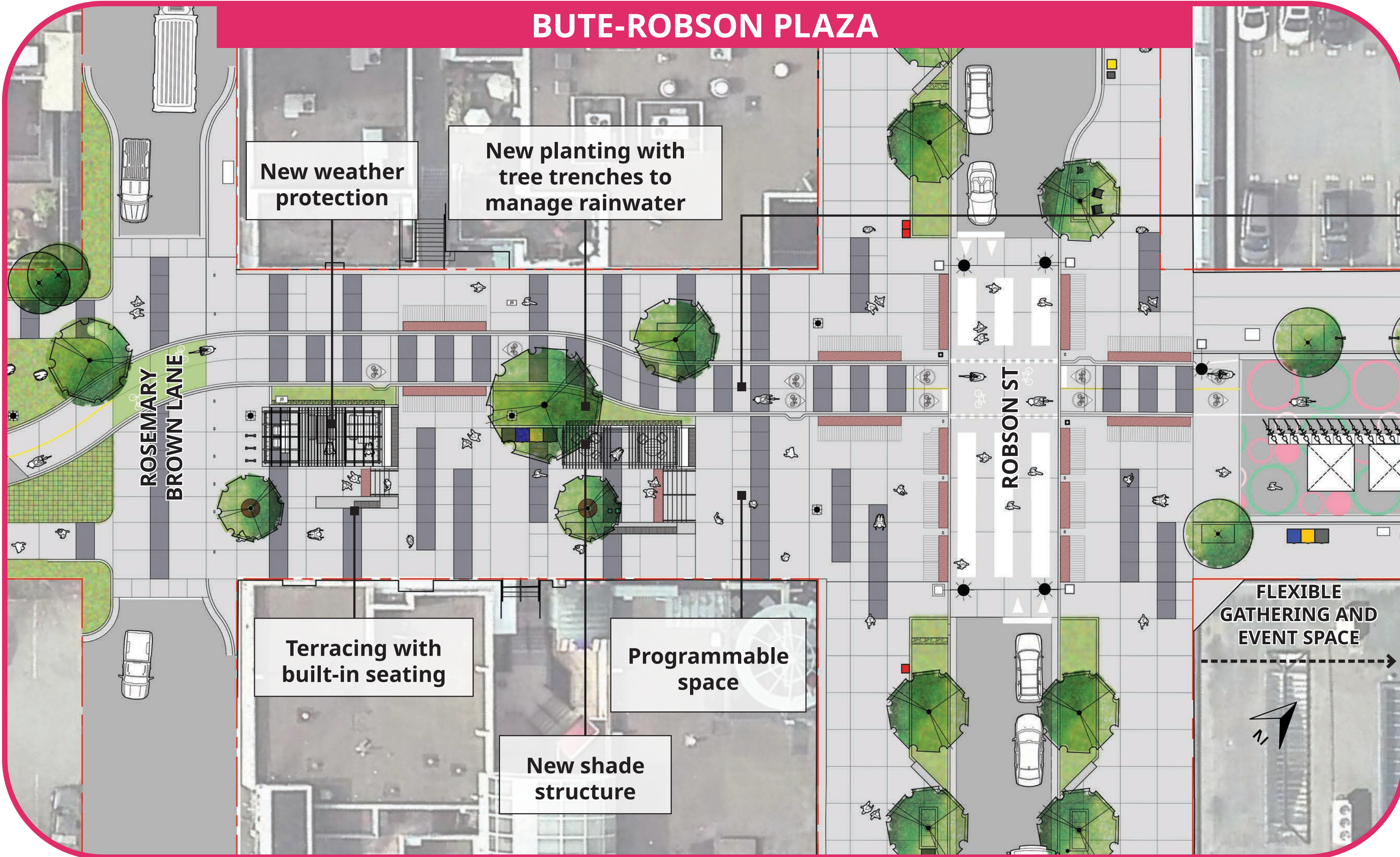
- **Extend the plaza feel onto Robson Street:** widened sidewalks create more space to stroll and raised crosswalks prioritize walking and rolling.
- **Create more gathering and event space:** in the plaza and on the north east side of the intersection, between Robson Street and Eihu Lane.
- **Accommodate access:** for emergency vehicles, parkades and other loading needs.

The plazas will be co-managed by the City and community partners, including the Robson Street Business Association. Community partners play an important role in the activation and day-to-day management of these public gathering spaces, and the City provides additional support and services to help these spaces stay clean, safe and welcoming.

2

A permanent plaza helps address the need for public spaces Downtown

BUTE-ROBSON PLAZA

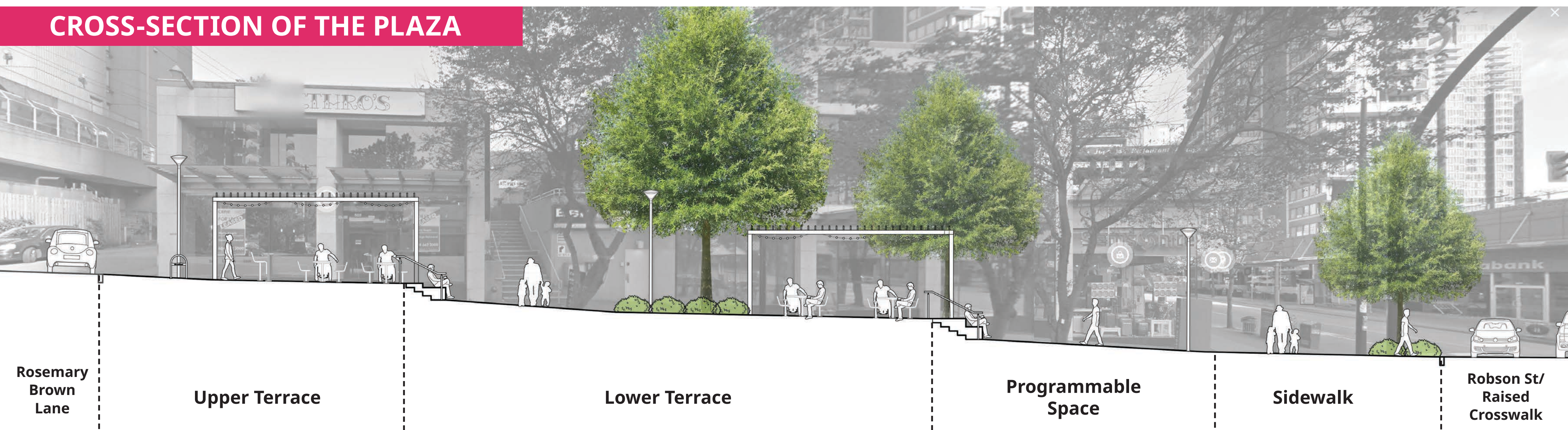


Clear delineation between walking, biking, and rolling spaces reduces the potential for conflicts.

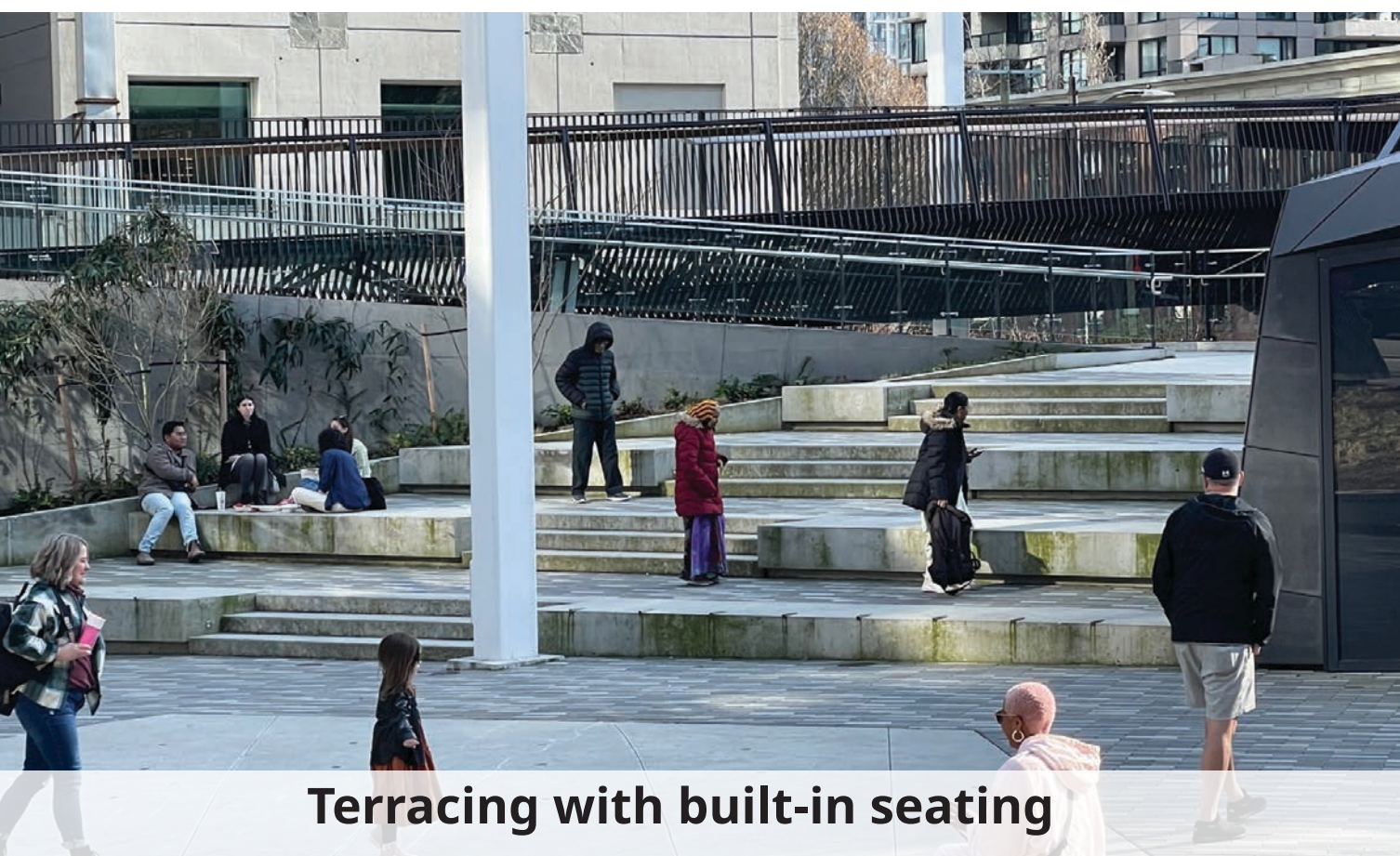


New lighting illuminates routes through the plaza so it feels welcoming year-round.

CROSS-SECTION OF THE PLAZA



Key Design Features



Terracing with built-in seating



New tree planting



Festival programming



New built-in lighting features



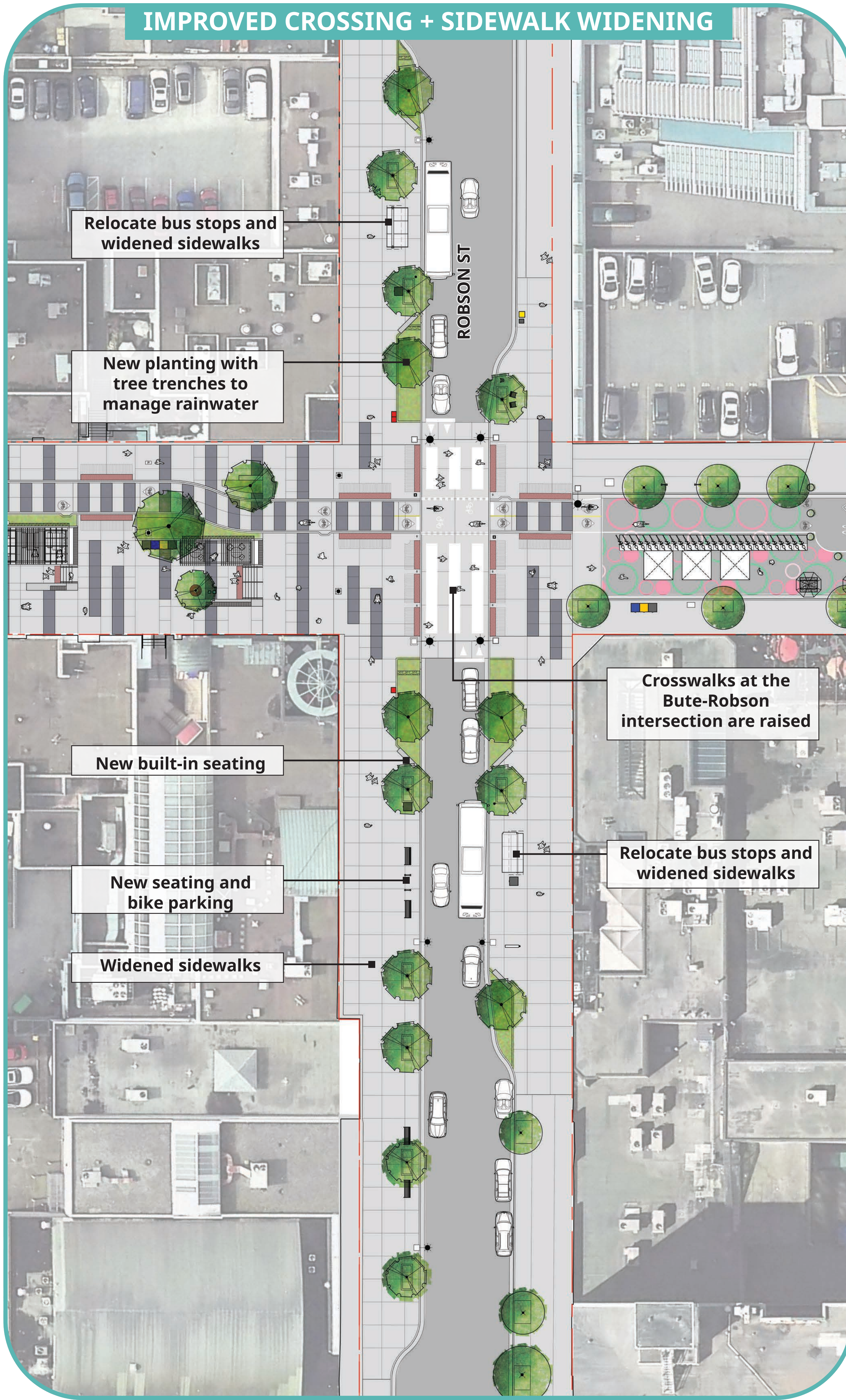
New weather protection



Programmable space

3

Widened sidewalks on Robson Street help prioritize walking and rolling



Continuous concrete paving extends the 'Plaza feel' onto Robson Street.



Raised crosswalks prioritize walking and rolling



New trees provide shade and shelter. Roots have enough space to grow



Built in seating provides space to stop and rest next to greenery



Green rainwater infrastructure, including rain gardens, helps manage rainwater.



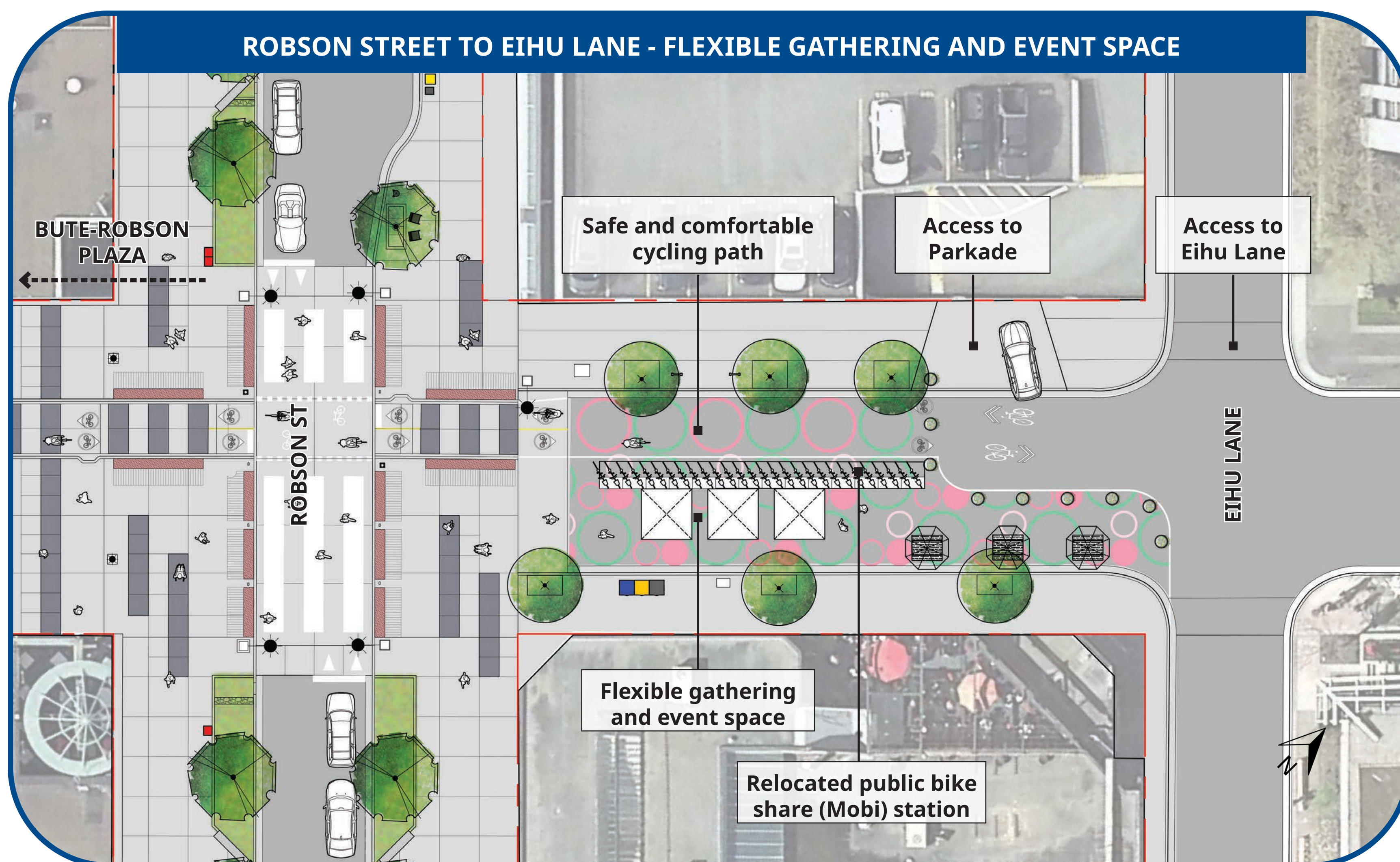
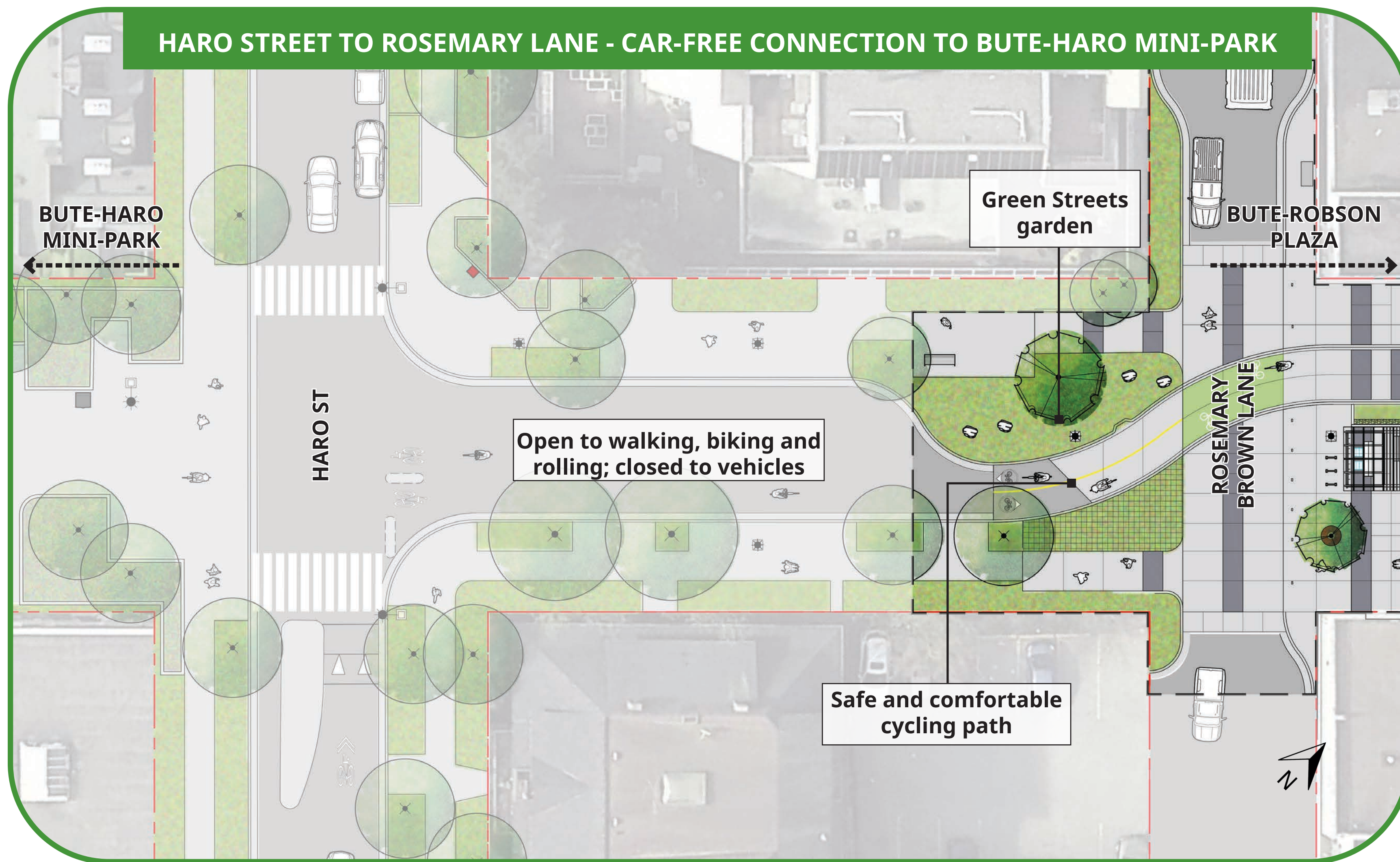
Wider sidewalks mean more space for seating



Arriving by bike is easier with new and improved bike parking

4

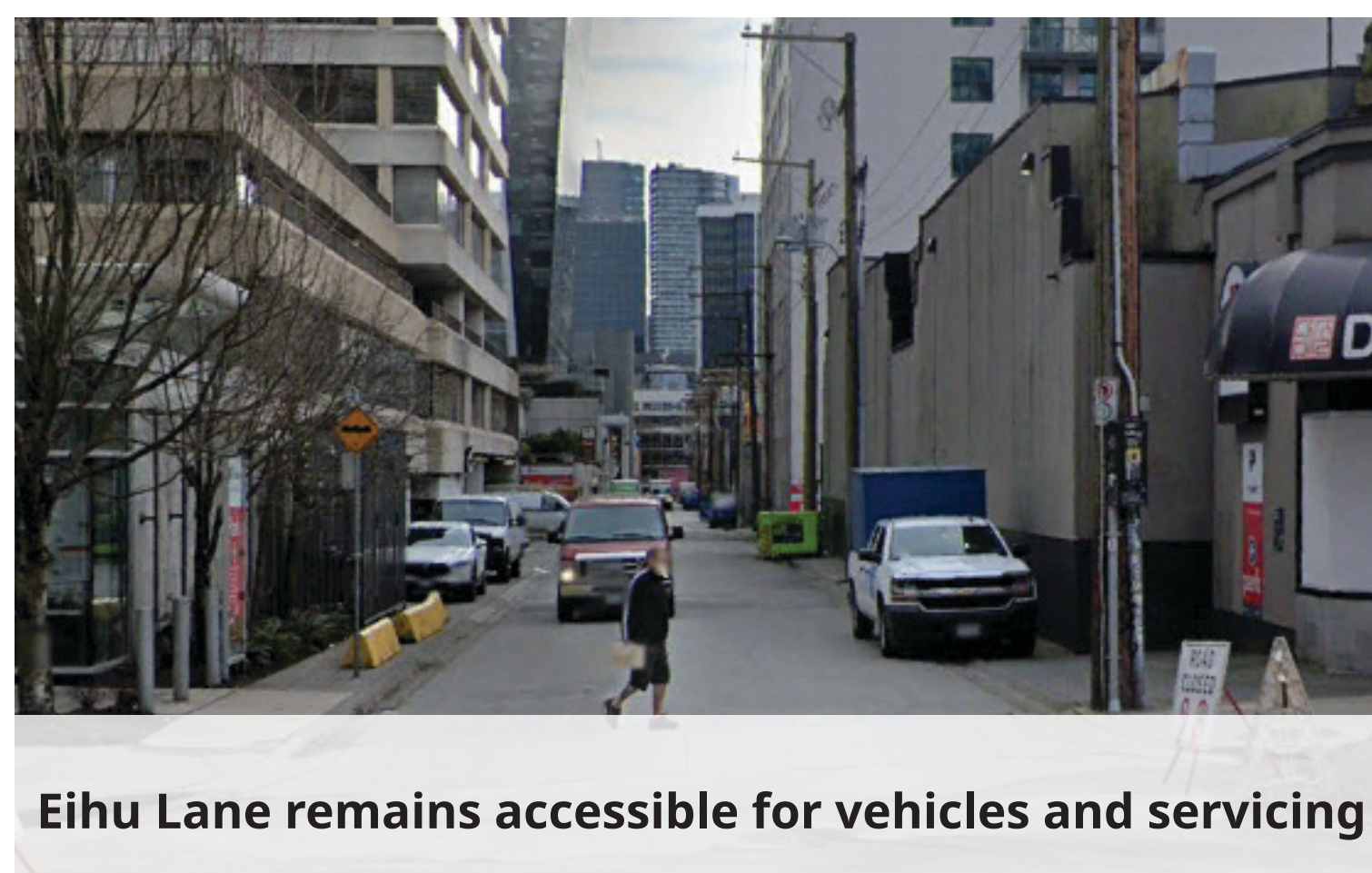
The adjacent blocks provide better connections to and through the Plaza



Space for gathering is extended north of Robson Street, towards Eihu Lane.



The parkade access is retained, for those visiting Robson Street by car



Eihu Lane remains accessible for vehicles and servicing



The public bike share (Mobi) station is relocated to the north side of Robson Street