

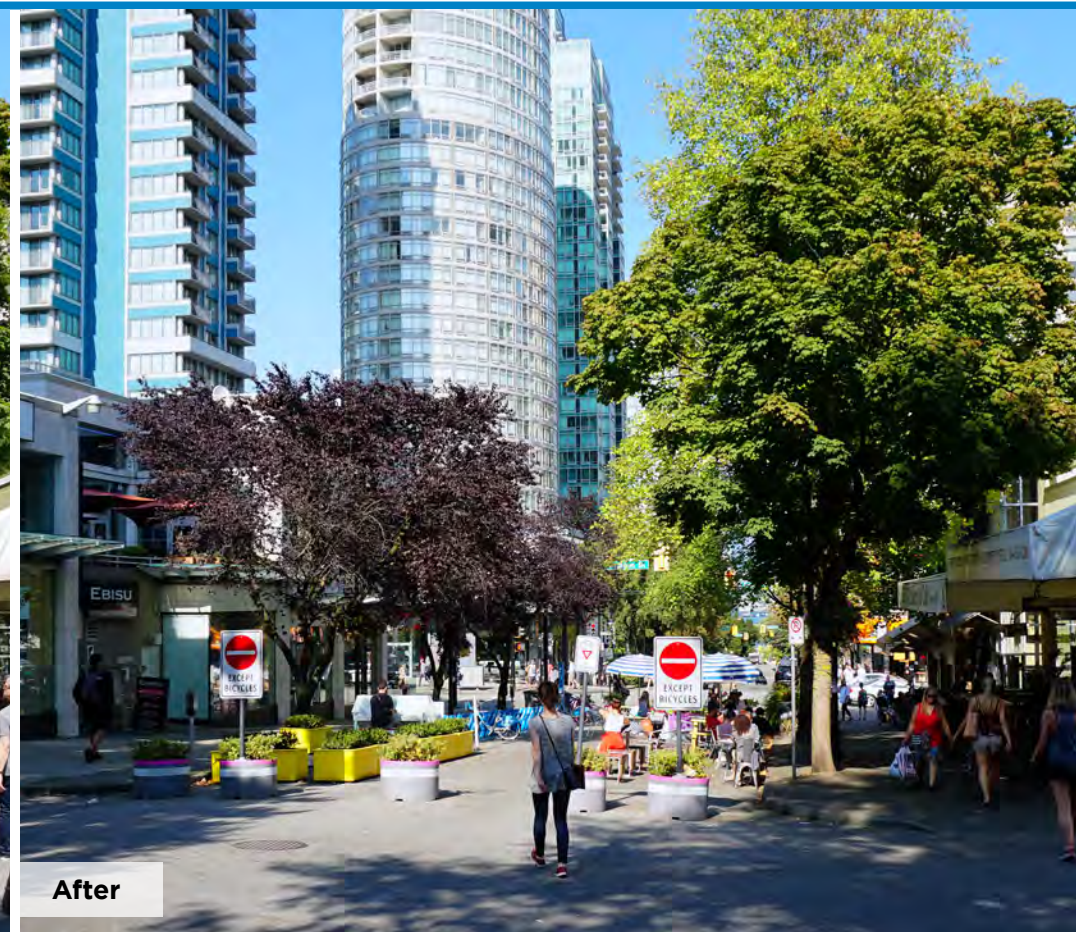


BUTE-ROBSON PLAZA

The City of Vancouver is developing a new permanent plaza design at Bute-Robson, to build on the success of trial and interim phases of the plaza, and help address the need for “social” public spaces in the Downtown area.

In 2017 and 2019, we asked the public what is working and what can be improved in Bute-Robson Plaza. Based on the previous feedback, we have developed a draft conceptual design for the future permanent plaza. Your input will help us develop a detailed design. There will be opportunities to provide feedback on the recommended design next year.

Bute-Robson Trial Plaza



In summer 2017, the City of Vancouver implemented a trial pavement-to-plaza on Bute Street south of Robson Street, **in partnership with the Robson Street Business Association** by re-purposing road space. The addition of street furniture such as seating with umbrellas, a piano, playful elements and planters, invited people to stop and stay, which resulted in strong support for the plaza. This project is supported by the Transportation 2040 Plan, West End Community Plan, 2019-2022 Capital Plan, and Places for People, all of which encourage the creation of public plazas and gathering spaces across Vancouver.

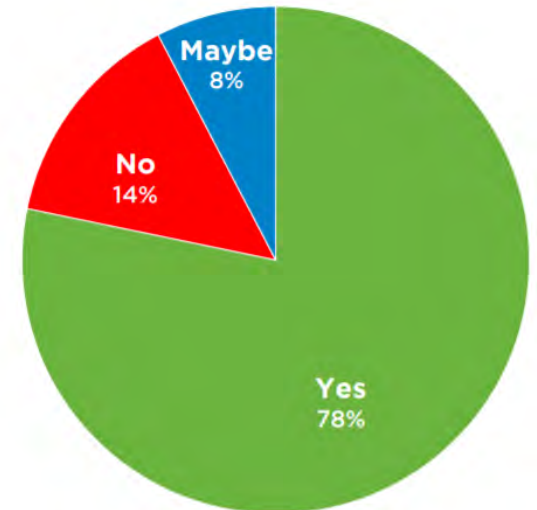
Council Direction



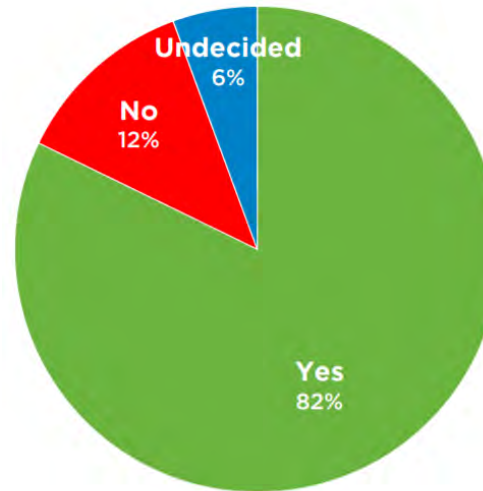
In November 2017, with strong community support, Council voted unanimously to approve a permanent plaza and extend the current trial as an interim plaza until a final plaza is designed and constructed.



Over 75% support a year-round plaza.



653 survey responses
*Excluding responses from people who never visited the plaza.



657 survey respondents

Over 80% of survey respondents feel the plaza has improved the neighbourhood

Previous Engagements

In 2017 and 2019, we asked the public what is working and what can be improved in Bute-Robson Plaza. The Places for People six emerging strategic directions are common themes we heard from Bute-Robson Plaza survey respondents.

What do you like to do in the plaza?



2017 survey; total responses 672



The “Right” Supply



- What is working:**
- Public space for the neighbourhood to enjoy
 - Meet new people in the community
 - Active business frontages
- What can be improved:**
- Remain public, not exclusive
 - Distribute seating across plaza.

Design for people



- What is working:**
- Mix of fixed and movable seating
 - Community space, not overly programmed
- What can be improved:**
- Leveled seating
 - Designated area for special events and performances
 - Enhanced weather protection

For all, by all



- What is working:**
- Place to sit, rest, and relax
 - Hangout for friends and family
 - Safe zone / no cars
- What can be improved:**
- Playful features with games
 - Encourage local art and music
 - Universally accessible seating

Day-long, year-long



- What is working:**
- Lightly programmed (e.g. public piano, tree lights)
 - Free and social events
 - 24/7 seating
- What can be improved:**
- Winter-friendly features
 - More pop-up activities
 - More umbrellas

Nature and Resilience



- What is working:**
- Planters help soften edges
 - Street trees compliment car-free space
- What can be improved:**
- More nature and vegetation
 - Water feature

Connecting people and places



- What is working:**
- Calms traffic into the neighbourhood
 - Accommodates both walking and cycling
 - Access to public bike share
- What can be improved:**
- Clear cycling separation
 - More traffic calming on Bute

Modifications Within and Around The Plaza Since 2017

Over the years, in partnership with the local Business Improvement Association, the City has tested different layouts, measured traffic impacts, observed behavior in the space, and asked for input from community members.



Accessible seating pods



Art wrapped planters



Raised platform for seating with playful elements



Expanded crosswalk on Robson St, north of plaza to create more space for people to walk and roll.

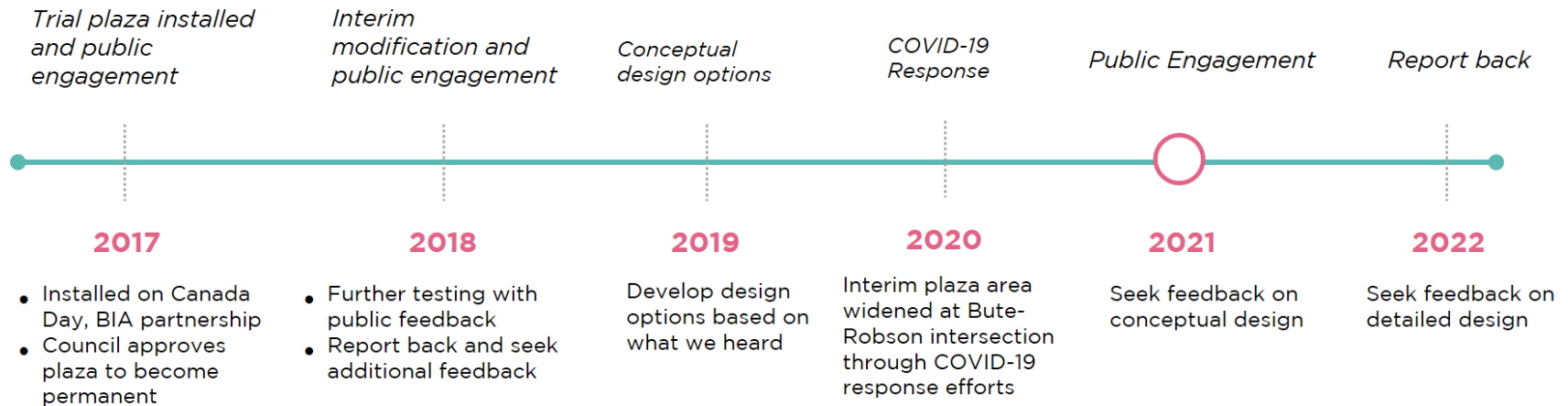


Solar in-ground lights



Year-round flexible seating

Engagement Timeline and Objectives



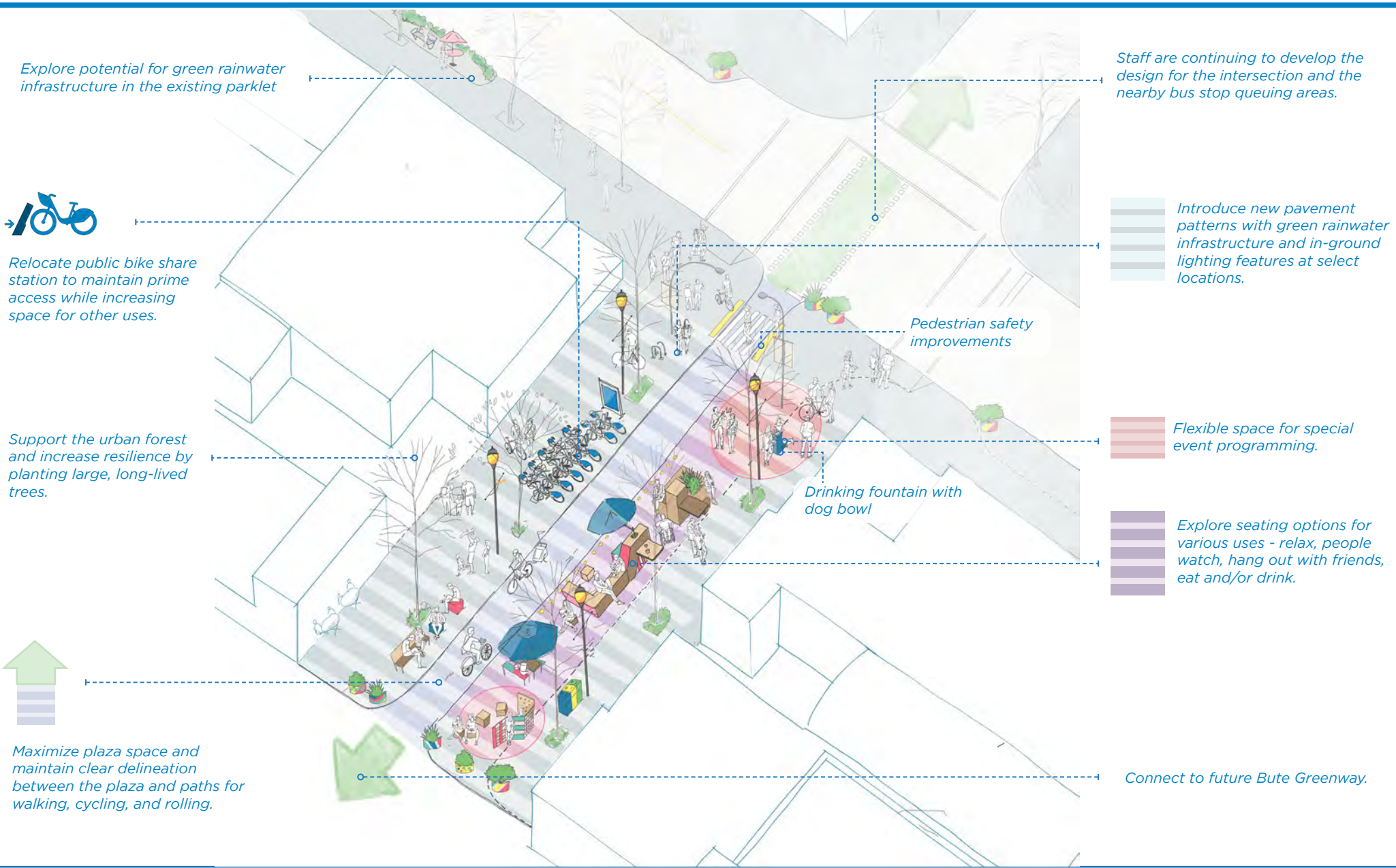
As part of the Bute Greenway project, we are developing a permanent design for Bute-Robson Plaza based on public and stakeholder feedback. Our draft concept design objectives include:

- » Explore seating options for various uses - relax, people watch, hang out with friends, eat and/or drink.
- » Introduce new pavement patterns with green rainwater infrastructure and in-ground lighting features at select locations.
- » Design for a variety of passive, spontaneous, and programmed activities
- » Maximize plaza space and maintain clear delineation between the plaza and paths for walking, cycling, and rolling
- » Support the urban forest and increase resilience by planting large, long-lived trees

There are also opportunities to explore improvements that would integrate Bute-Robson Plaza to the north onto Robson St and to the South towards Haro St. **Take the survey** and tell us how what you think about these potential improvements ideas:

- » Extend Bute-Robson plaza onto Robson St with widened sidewalks wrapping around each corner
- » Enhance the Bute-Robson intersection to improve pedestrian crossings and create more space for public gathering, particularly on the northside of the intersection
- » Enhance connectivity between the Bute-Robson Plaza and the Bute-Haro mini-park

Draft Concept



Explore potential for green rainwater infrastructure in the existing parklet



Relocate public bike share station to maintain prime access while increasing space for other uses.

Support the urban forest and increase resilience by planting large, long-lived trees.



Maximize plaza space and maintain clear delineation between the plaza and paths for walking, cycling, and rolling.

Staff are continuing to develop the design for the intersection and the nearby bus stop queuing areas.

Introduce new pavement patterns with green rainwater infrastructure and in-ground lighting features at select locations.

Pedestrian safety improvements

Flexible space for special event programming.

Drinking fountain with dog bowl

Explore seating options for various uses - relax, people watch, hang out with friends, eat and/or drink.

Connect to future Bute Greenway.

Inspirations



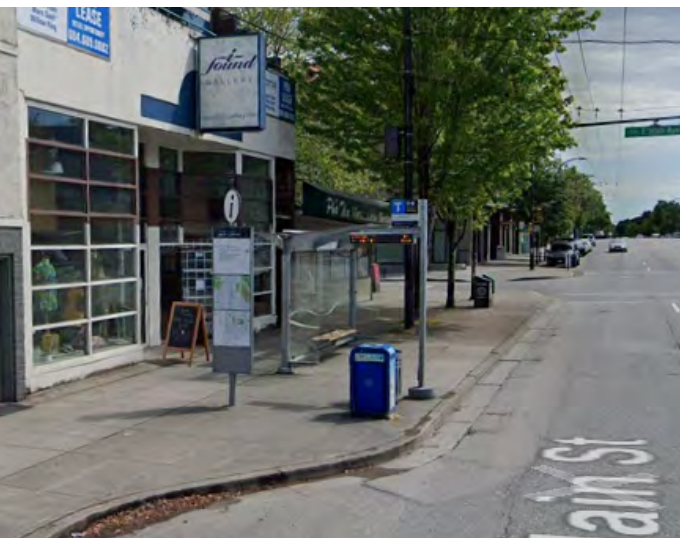
A clear delineation between seating, bike share station and paths for walking, cycling, and rolling
(Ontario Greenway, Vancouver)



Resting space
(Yorkville Park, Toronto)



Mix of seating options
(Picurbia at 800 Robson, Vancouver)



Intersection improvements - Bus bulges
(Main Street, Vancouver)



Space for community events
(Jim Deva Plaza, Vancouver)



Permeable pavement with rainwater tree trenches
(Richards Street, Vancouver)



BUTE GREENWAY PHASE 1

SHORE-TO-SHORE CONNECTION

Share your feedback!

Please read the information guide and share your input by taking a survey. The survey will remain open until **December 13, 2021**.

Webpage: vancouver.ca/bute-greenway

Project Email: butegreenway@vancouver.ca