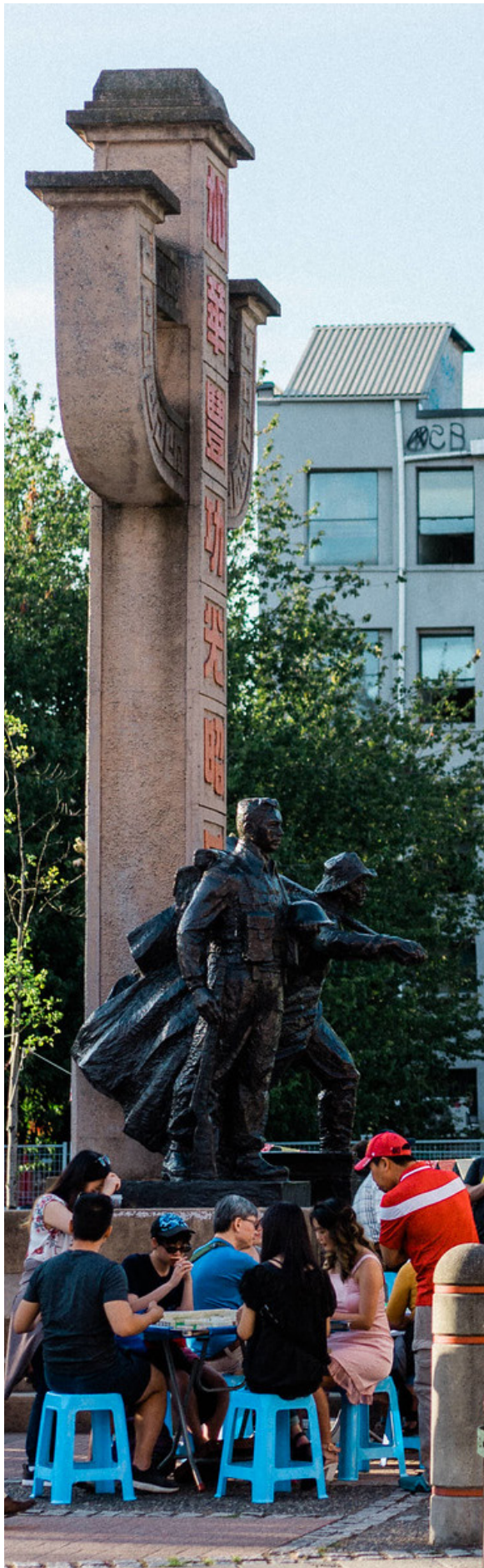


MEMORIAL SQUARE 唐人街紀念廣場 REDESIGN 重新設計



SHARE YOUR IDEAS!

Read the informational material and share your ideas by taking our **online survey**.

Webpage and Survey: shapeyourcity.ca/memorial-square-redesign

Leave us a voice message: **604-829-9416**

Project Email: memorialsquareredesign@vancouver.ca

OVERVIEW

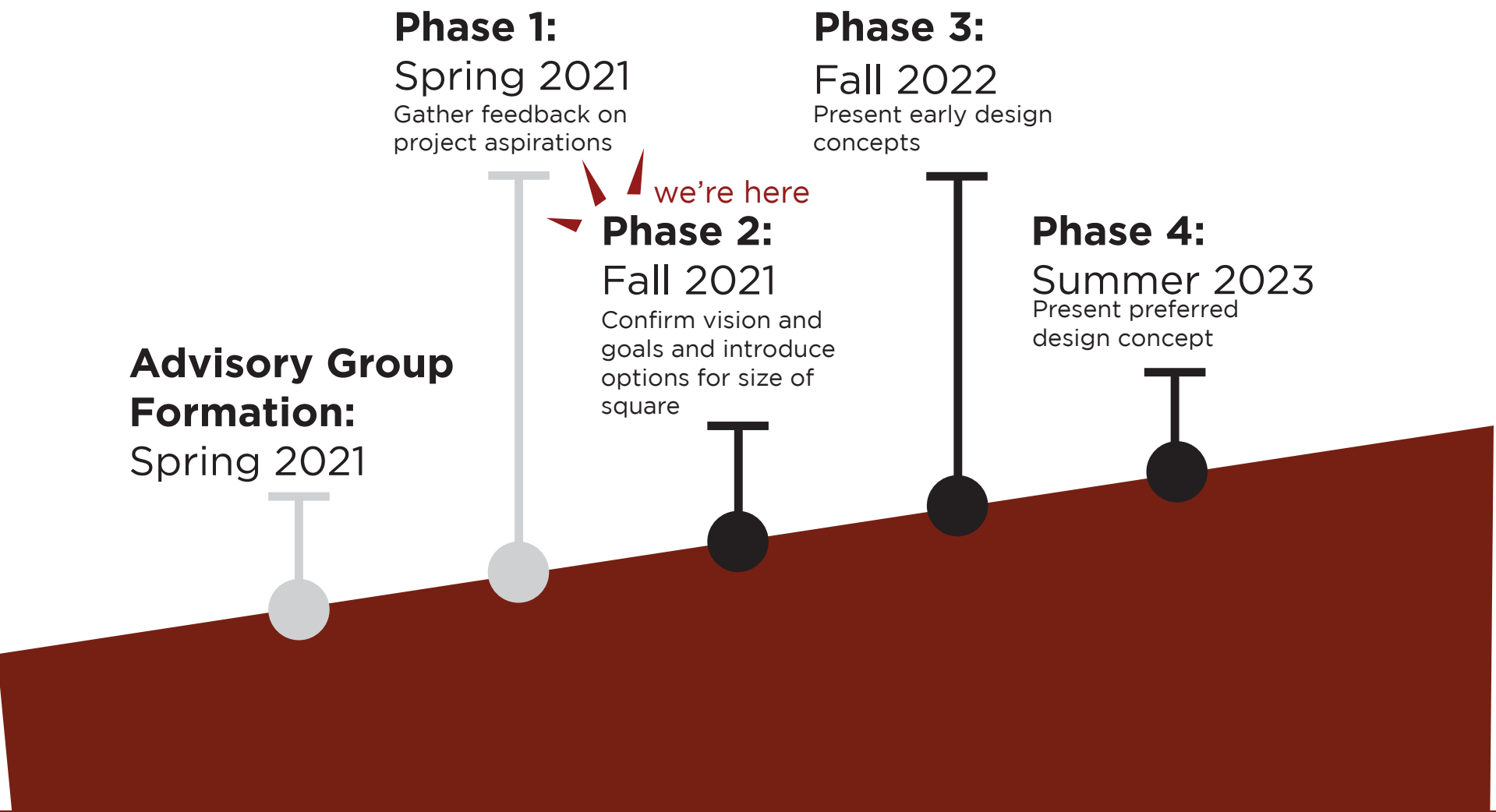
BACKGROUND

Chinatown Memorial Square hosts important community events such as the Remembrance Day ceremony and draws many visitors to the neighbourhood where they can learn about the contributions of early Chinese people in Canada, including Chinese railway workers and Chinese Canadian war veterans. It also provides a social space for community members to honour their culture and traditions.

This project is an important part of the Chinatown Transformation work that came from the recommendations in the Historical Discrimination Against Chinese People in Vancouver report approved by Council in 2017. Improving assets such as Chinatown Memorial Square to support Chinatown’s living cultural heritage is a key component of this work.



TIMELINES



VISION AND GOALS

DRAFT VISION

The renewed Chinatown Memorial Square will further strengthen significant moments in the community’s history and its resilience in rising above adversity. It will be a vibrant place where young people and people of all backgrounds can learn, appreciate, and reflect upon the contributions of the early Chinese people in Canada, including veterans and railway workers. It will also be a place to renew relationships based on a common understanding of our shared past and cultures, and work towards a better tomorrow. At the square, the Chinese community will come together to observe and practice cultural traditions all year-round, and welcome all to celebrate and share their cultures. The square will be an inspirational space in the heart of Chinatown, befitting of Chinatown’s role as a cultural destination for Vancouver and the world.



photo credit: Jonathan Desmond Photography

DRAFT GOALS

Draft GOAL 1

Enhance Memorial Square as a special place that honours and commemorates the contributions of Chinese Canadians, including veterans and railway workers; celebrates Chinatown’s rich culture and living heritage; and provides opportunities to learn about Chinatown’s past and practice cultural traditions.

WHAT WE HEARD

64% of responses indicated future interest in using the square to honor Chinese Canadian contributions, celebrate culture, and attend special events and festivals.

Draft GOAL 2

Create a safe, accessible, inclusive and welcoming space for visitors and residents that allows for a range of cultural programming and activities throughout the year, taking into particular consideration the needs of Chinese seniors.

WHAT WE HEARD

“Making the square culturally appropriate for Chinese seniors and accessible for all ages and backgrounds” was the most supported statement out of the options provided.

Draft GOAL 3

Enhance the square’s prominence in the heart of Chinatown and its connection to adjacent cultural assets and Andy Livingstone Park and its redesign.

WHAT WE HEARD

83% of survey respondents supported increasing the size of the square while improving the pedestrian crossings on Keefer St. and Columbia St.

Draft GOAL 4

Provide recommendations on the future stewardship of the space.

WHAT WE HEARD

53% of respondents see themselves using the square in the future in events and festivals

Draft GOAL 5

Continue to facilitate access into, through, and around the project area for people walking or using assistive devices, cycling, and driving.

WHAT WE HEARD

40% of survey respondents travel to Memorial Square primarily by walking, while 29% travel by car and 21% take transit.

Draft GOAL 6

Ensure the local transportation network continues to enable goods movement, reliable transit and access for emergency vehicles.

WHAT WE HEARD

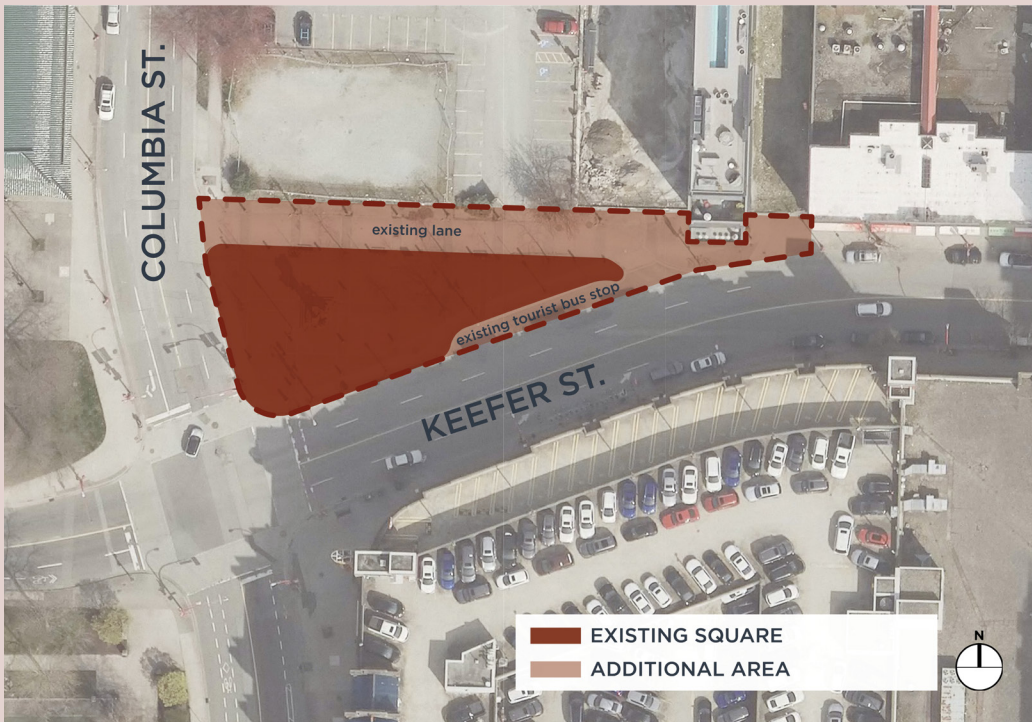
23% of respondents said the thing they like the most about the square is the location - close to the Dr. Sun Yat-Sen Garden, Chinese Canadian Military Museum, restaurants, shops, etc.

SIZE OF THE SQUARE

IDEAS TO INCREASE THE SIZE

During public engagement phase 1 we heard from a number of respondents that the existing space is too small, and some would like to see the size of Chinatown Memorial Square enlarged – 60% of respondents strongly agree and 23% somewhat agree with this idea. There are opportunities to enlarge the square by reconfiguring the existing road space. The ideas presented below will be refined at the design process.

1



Through the redesign we are able to close the lane to the north of the square because it is no longer needed. We are also able to remove the tourist bus stop as there are alternative tour bus stops available nearby. This results in an increase of 570m² (approx. 80%). The main considerations for this idea include:

- Existing traffic circulation patterns will remain the same.
- No parking is impacted.
- Pedestrian access to the square remains the same.

2



This idea expands the square into the existing road space while maintaining existing traffic circulation and site access. The increase in space would be achieved by reducing lane widths, shifting lanes and moving curbs. This results in an increase of 900m² (approx. 130%). The main considerations for this idea include:

- Improvement of pedestrian safety by decreasing crosswalk distances and encouraging vehicles to slow down around the square.
- Existing traffic circulation patterns will remain the same.
- No parking is impacted.
- The tourist bus stop will be removed as there are other stops nearby, and the lane on the north side of the square will be closed because it is no longer needed.

OTHER IDEAS CONSIDERED

Staff explored a number of ideas leading up to phase 2 public engagement. One idea that was considered was technically feasible but resulted in neighbourhood traffic circulation changes and didn't meet project goals. As a result, this idea is not being advanced (see diagram to right).

This idea expands the square further into existing road space by removing a lane of traffic from Keefer St. Keefer would become a one-way street with westbound traffic removed. This idea would increase the size of the square by 1130m² (approx 165%).The traffic impacts under this option, given the modest size increase, led staff to recommend that this idea not be advanced further.

