

EAST PARK

A NEW PARK IS COMING TO FALSE CREEK



Project Overview

A new park is coming to False Creek, a unique place where city and water meet, on the ancestral and unceded territories of the xʷməθkʷəy̓əm (Musqueam Indian Band), Sḵwxwú7mesh Úxwumixw (Squamish Nation) and səliłwətał (Tsleil-Waututh Nation).

In spring 2024, we launched the second round of engagement for the exciting waterfront project currently known as East Park. In this round we asked for feedback on two preliminary concept designs.

What we heard from the local First Nations and the community has shaped this concept plan, which will be presented to the Park Board for decision in the fall.

Construction of East Park is anticipated to begin on the south side of the project site between the Seaside Greenway and East First Avenue in **Phase 1** (2026-28). The shoreline condition and connections to the waterfront will be designed and delivered in **Phase 2** (refer to Figure 1).

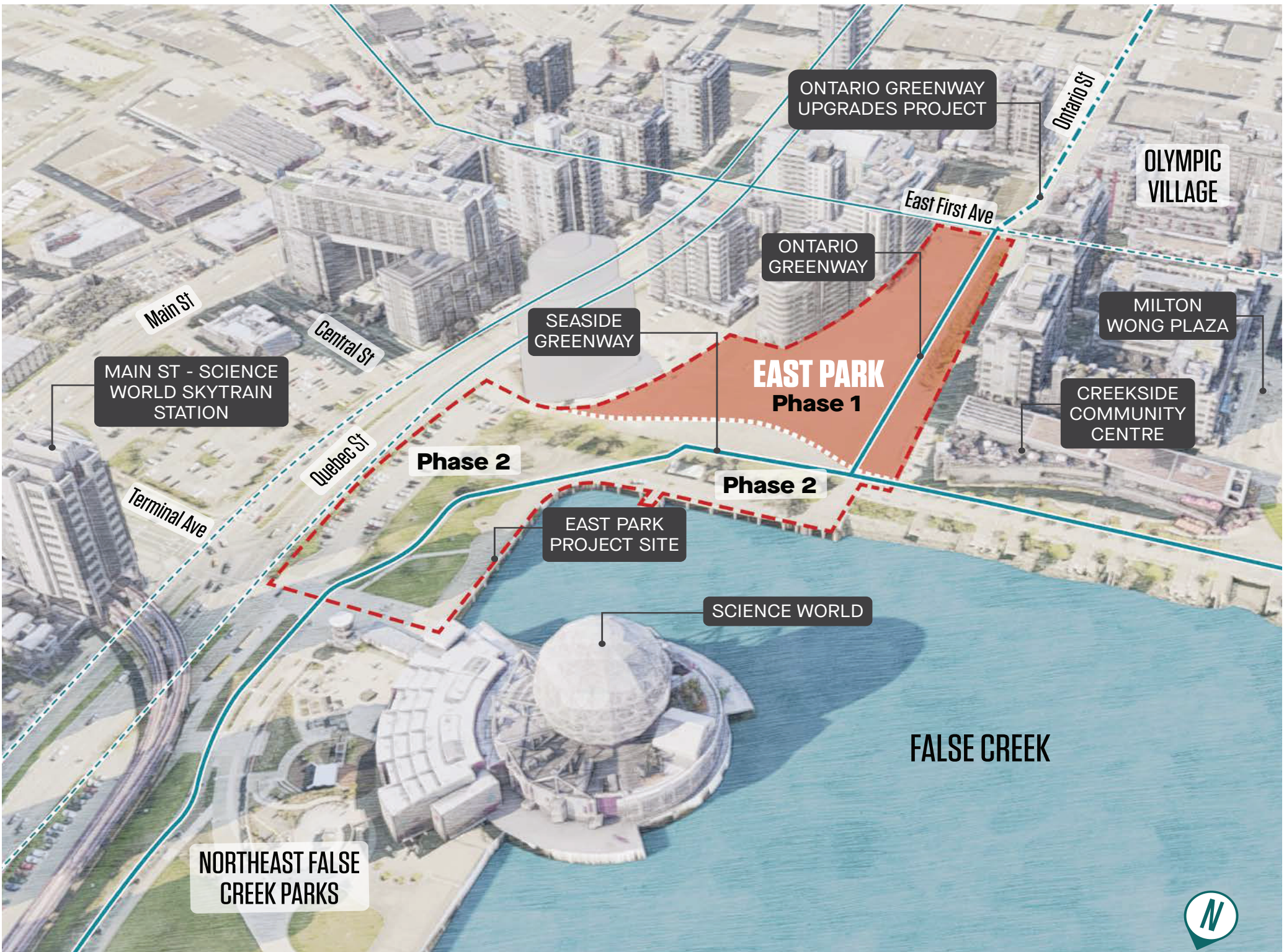
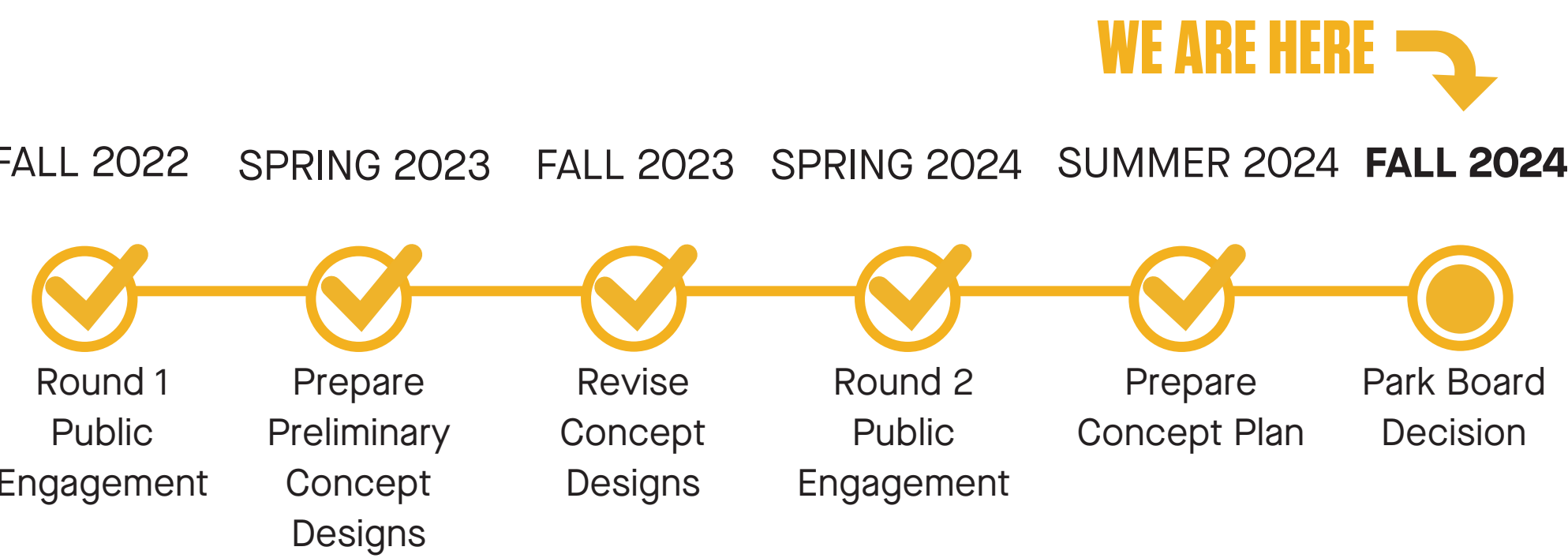


FIGURE 1: EAST PARK PHASE 1 AND PHASE 2



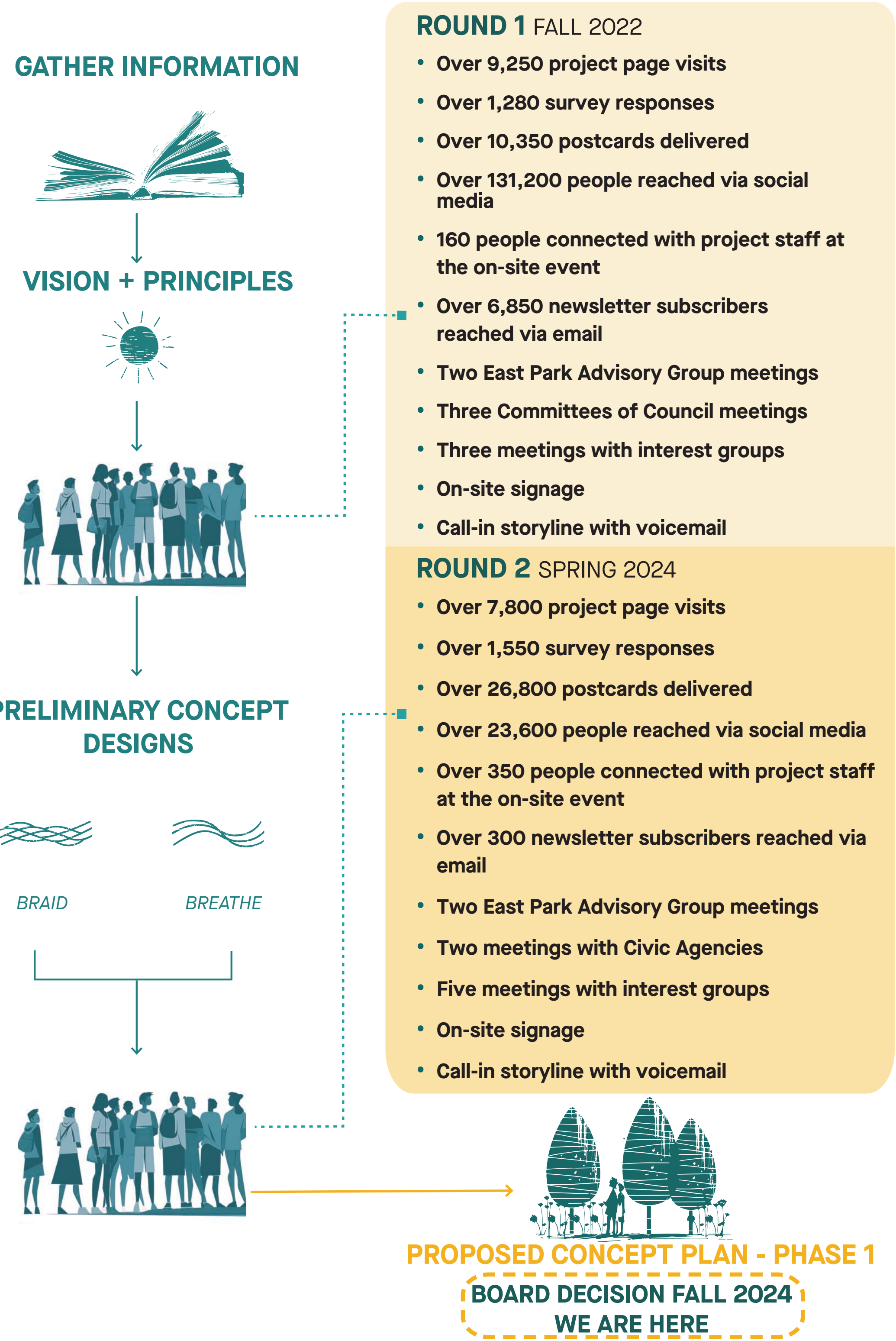
Listening and Responding

The East Park project is shaped by the [Guiding Principles](#) for the design of parks in Northeast False Creek and by what we heard from the local First Nations and the community during round 1 and round 2 engagement.

This process identified the following five project goals as most important for East Park:

- NATURE**
Provide habitat areas to learn from and care for the water, land, and life they support. Provide resilient landscapes that adapt to sea level rise and climate change.
- RECONCILING**
Provide an ecologically rich shoreline, incorporating Indigenous models of stewardship and cultural practices to improve aquatic health and support the ongoing work of reconciliation, truth-telling, and decolonization.
- BELONGING**
Provide accessible, inclusive and welcoming spaces that nourish connection and support cultural expression, with a variety of social areas and spaces for growing and sharing food.
- FLEXIBILITY**
Provide multi-functional spaces that support a range of activities in ways that invite change over time (day, seasons, years) and include all ages, abilities, and identities.
- CIRCULATION**
Provide clear, wide, separated paths for walking and biking, with accessible connections to improve wayfinding and safety.

Engagement Summary



For background information and detailed information about project engagement, please visit the [Shape Your City project page](#).

CONCEPT PLAN

The second round of engagement highlighted strong community support for a number of park design features including: accessible connections to nature, biodiverse habitat areas, and flexible spaces to support a range of activities.

This proposed concept plan strives to combine the most popular design features and balance diverse needs. The design incorporates accessible access to lush natural areas, large flexible lawn areas, welcoming social areas, and opportunities for cultural expression and representation.

A biodiverse songbird tree grove with shaded seating areas nestled among the trees offers a tranquil retreat for small groups or individuals seeking solitude.

A large level lawn at the heart of the park is designed to provide space for small-scale community events and casual gatherings. A flexible active zone adjacent to the Creekside Community Centre will support additional fitness and recreation programming opportunities.

A variety of seating types are proposed throughout the park, offering accessible and comfortable places to enjoy nature and the water and mountain views. A seating wall proposed along the north edge of the park offers places to gather and observe the surrounding activity, while also acting as a buffer between park activities and the adjacent greenways. Separated walking and cycling paths provide safe and accessible circulation along the water and throughout the park, connecting neighbourhoods, parks, and key community destinations.



VISUALIZING EAST PARK



SEATING AREA

SEATING AREA

SONGBIRD TREE GROVE

CENTRAL SEATING AREA

LEVEL LAWN

BIORETENTION

ENTRY PLAZA

LEVEL LAWN

SEATING AREA

SEATING WALL

ONTARIO GREENWAY

FLEXIBLE ACTIVE ZONE

SEASIDE GREENWAY

SEATING WALL

CREEKSIDE COMMUNITY CENTRE

Minimum 1m wide separation buffer between the cycling and pedestrian paths. Buffer will include lighting, waste bins, and wayfinding elements.

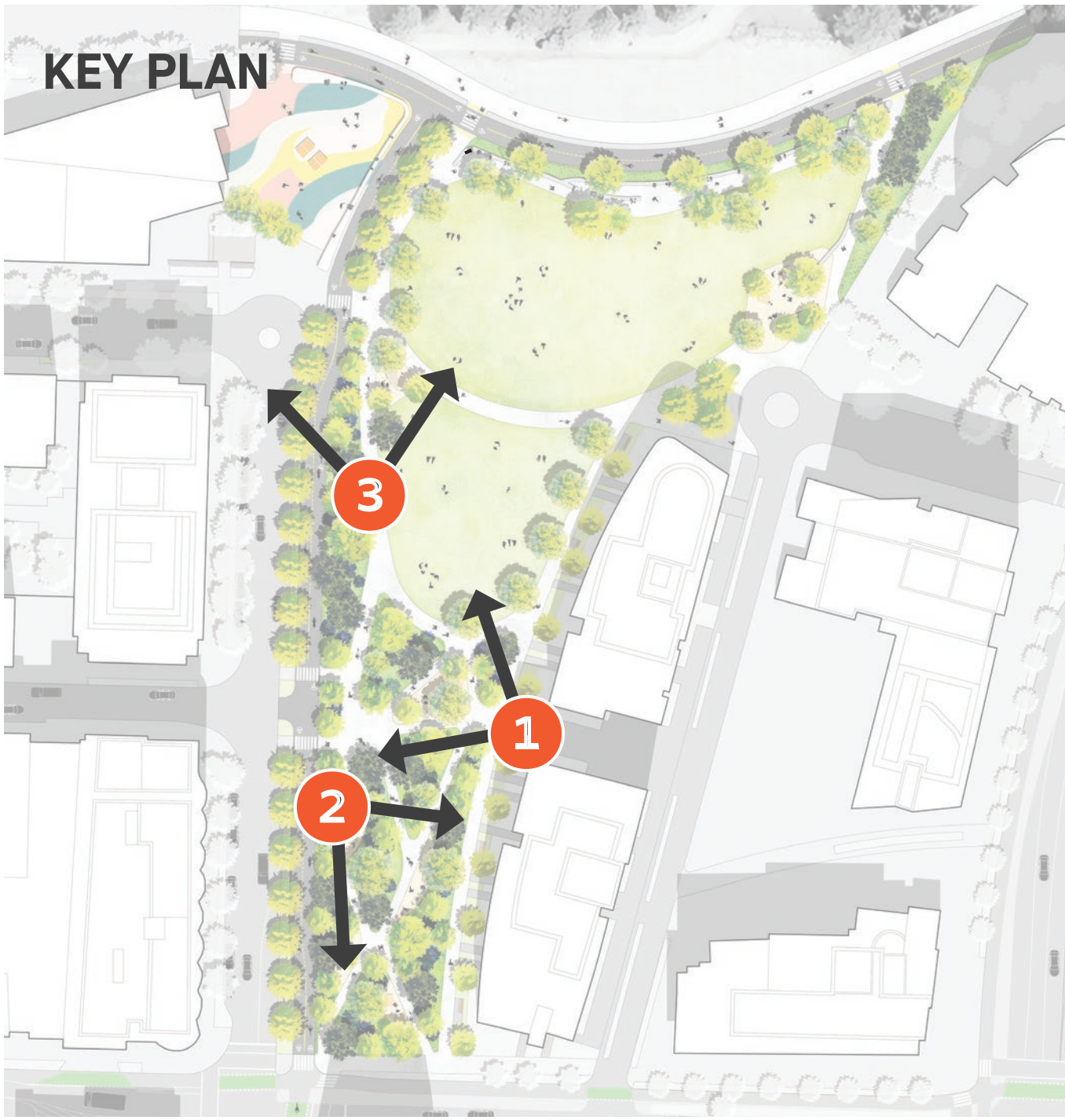
Intersection design details will be refined at later stage.

Location for shared micromobility stations will be determined in detailed design stage.

VISUALIZING EAST PARK



1 CENTRAL SEATING AREA (LOOKING WEST)



ACCESS TO NATURE AND NEIGHBOURHOODS

East Park is located at the junction of the three of Vancouver's most popular walking and cycling routes: [Ontario Greenway](#), [Seaside Greenway](#), and [Central Valley Greenway](#). The new park will strengthen neighbourhood connections and support these active transportation corridors for walking, biking, and rolling for people of all ages, and abilities.

Separated pedestrian and cycling paths will provide safe and accessible movement to False Creek, community amenities, parks and beaches. Pedestrian crosswalks and additional safety features will be incorporated to facilitate safe crossings at key greenway intersections.

During the detailed design phase of the project, bike racks will be strategically located adjacent to gathering areas. Additionally, shared micromobility stations will be conveniently located along the greenways.



2 SONGBIRD TREE GROVE (LOOKING SOUTHEAST)

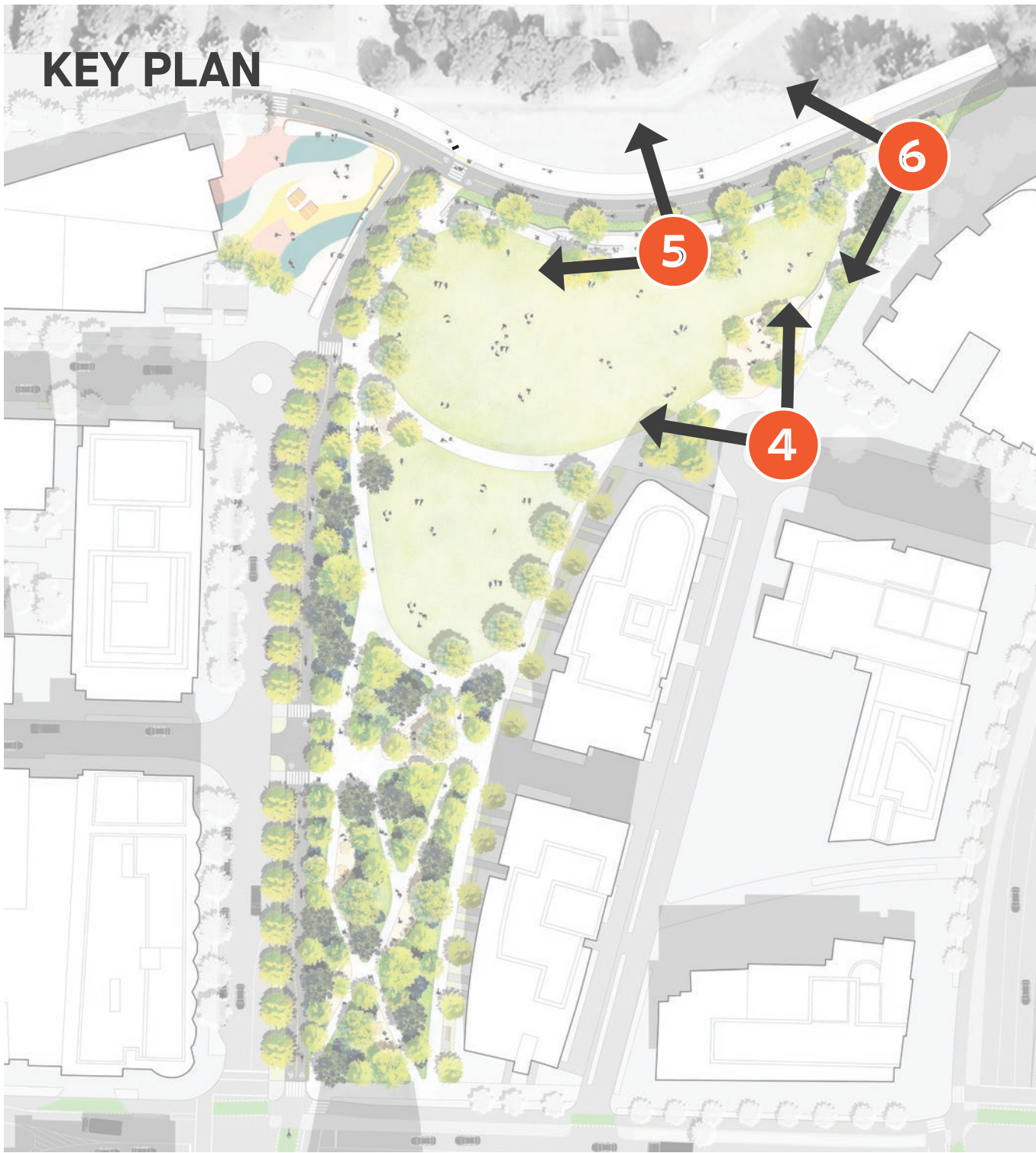


3 SEATING AREA ALONG WESTERN PATH (LOOKING NORTH)

VISUALIZING EAST PARK



4 ENTRY PLAZA AT SWITCHMEN STREET (LOOKING NORTHWEST)



5 SEATING WALL (LOOKING WEST)

CULTURAL EXPRESSION AND BELONGING

East Park is imagined as a place for local First Nations representation and cultural expression, where Musqueam, Squamish and Tseil-Waututh artists identify opportunities to ground the park in cultural expression specific to this place.

The park design strives to meet the community's evolving daily and seasonal needs. A variety of flexible and welcoming spaces, features, and elements are proposed throughout the park for all ages, abilities and identities. To ensure comfort, seating with arms and backrests are included along the seating wall and in shaded seating areas throughout the park. Large level lawns and plazas are designed for informal recreation, casual gatherings, and local small-scale events.



6 SEATING WALL (LOOKING WEST)

PLANTING STRATEGY

The proposed planting design is envisioned with culturally significant communities of plants supporting traditional cultural practices, ecosystem functioning, and climate resilience. A biodiverse songbird tree grove at the south of the site will increase tree canopy coverage and feature lush layers of shrubs, perennials and groundcovers, creating a green landmark in the surrounding urban context. Prioritizing native vegetation, the reintroduced species will strive to reference the important ecological history of this region.

A diverse selection of native trees and plants will be located throughout the site to provide shade, seasonal interest, and habitat for wildlife. Species will be selected that are well-adapted for urban conditions.

A limited selection of non-native vegetation will be strategically incorporated as needed to respond to site-specific conditions.

PRELIMINARY PLANTING PALETTE

Large Trees	Small Trees	Shrubs	Groundcover		
Skwxwú7mesh Snichim / heriqemínerín 01 xápayay / xpeətp Western Red Cedar (<i>Thuja plicata</i>) 02 ch'shay / lé-yətp Douglas Fir (<i>Pseudotsuga menziesii</i>) 03 k'emk'erheláy / qəmqəmələtp Big Leaf Maple (<i>Acer macrophyllum</i>) 04 kwelúlay / *əx*si:tp Red Alder (<i>Alnus rubra</i>) 05 - / - Trembling Aspen (<i>Populus tremuloides</i>) 06 - / th'exwíyēlelhp Pacific Dogwood (<i>Cornus nuttallii</i>)	07 - / - Sitka Mountain-Ash (<i>Sorbus sitchensis</i>) 08 lhəxwíhəxw / - Bitter Cherry (<i>Prunus emarginata</i>) 09 T'ekt'káy / sicətp Vine Maple (<i>Acer circinatum</i>) 10 - / sicəmətp Beaked Hazel (<i>Corylus cornuta</i>) 11 kwe7úp / q*ə?əp Pacific Crabapple (<i>Malus fusca</i>) 12 smelhxweláy / mətx*ələtp Pacific Plum (<i>Prunus subcordata</i>)	13 - / th'eláltel Rocky Mountain Juniper (<i>Juniperus scopulorum</i>) 14 Nástamay / ts'esláts Saskatoon Serviceberry (<i>Amelanchier alnifolia</i>) 15 Sxwúsum / sxwósem Soapberry (<i>Shepherdia canadensis</i>) 16 - / queth'ulp Oceanspray (<i>Holodiscus discolor</i>) 17 - / - Ninebark (<i>Physocarpus opulifolius</i>) 18 yetwán / lile? Salmonberry (<i>Rubus spectabilis</i>)	19 skw'ekwchsáy / s*əq*csətp Red Huckleberry (<i>Vaccinium parvifolium</i>) 20 séliyay / səni?ətp Oregon Grape (<i>Mahonia aquifolium</i>) 21 - / - Red Osier Dogwood (<i>Cornus sericea</i>) 22 K'wilayus / sp'á.th' Red Flowering Currant (<i>Ribes sanguineum</i>) 23 kálkay / qeqətp Wild Rose (<i>Rosa woodsii</i>) 24 kálkay / qelá Nootka Rose (<i>Rosa nutkana</i>)	25 ts'exwts'exwáy / pəpəyasətp Snowberry (<i>Symphoricarpos albus</i>) 26 tsxálem / səxələm Sword Fern (<i>Polystichum munitum</i>) 27 t'lesip / ʔsíp Licorice Fern (<i>Polypodium glycyrrhiza</i>) 28 t'ikw'en / ʔl'ik ənətp Kinnikinnick (<i>Arctostaphylos uva-ursi</i>) 29 - / - Creeping Oregon Grape (<i>Mahonia repens</i>) 30 xet'tánay / xeyslótel Wild Ginger (<i>Asarum canadatum</i>)	31 - / schi:yá:lh Coastal Strawberry (<i>Fragaria chiloensis</i>) 32 pálapála / sə'uq Deer Fern (<i>Struthiopteris spicant</i>) Non-native planting: Armstrong Maple (<i>Acer rubrum 'Armstrong'</i>) European Beech (<i>Fagus sylvatica</i>)



SONGBIRD TREE GROVE

VISUALIZING EAST PARK



NEXT STEPS

We will present the concept plan to the Park Board for decision in fall 2024. If approved, detailed design will commence in 2025, with construction of Phase 1 anticipated to begin in late 2026.

