

OVERVIEW + WHAT WE HEARD

Project Overview

We're creating a new vision for General Brock Park to support a vibrant community. Alongside planting more trees and improving biodiversity, we want to create a park that is welcoming and inclusive. That means: more opportunities for gathering, community events, and more amenities to support year-round activities. In the first phase of engagement we asked how the community currently uses General Brock Park and what improvements should be prioritized in the future park renewal. Engagement included an online survey and a park pop-up in April. In this phase, we have developed a concept design based on what we heard in the first round. For the stakeholder meeting, we are looking for feedback on the concept design. With the feedback, we will develop the final concept design.



Top priorities for spaces + amenities



1 Children's play
(55%)



2 Casual seating area
or plaza (51%)



3 Spaces to support
biodiversity + more
trees (47%)



4 Picnic area (43%)



5 Shade structure
(43%)



6 Walking/jogging/
rolling paths (40%)

*Respondents were asked to choose their top 4 principles from these 6 options. Percentages are calculated according to frequency of selection. Total responses: 129.

By the Numbers



129
Completed
surveys



25+
Engaged
at the Park
Pop-Up

41%

15% use the
park **every day**

of all survey respondents use
the park a few times a week

Key Take-aways

“Kids in the towers + (apartments)
don't have backyards -
this is our backyard”



Across the survey questions and park pop-up,
there was a strong support for places to:

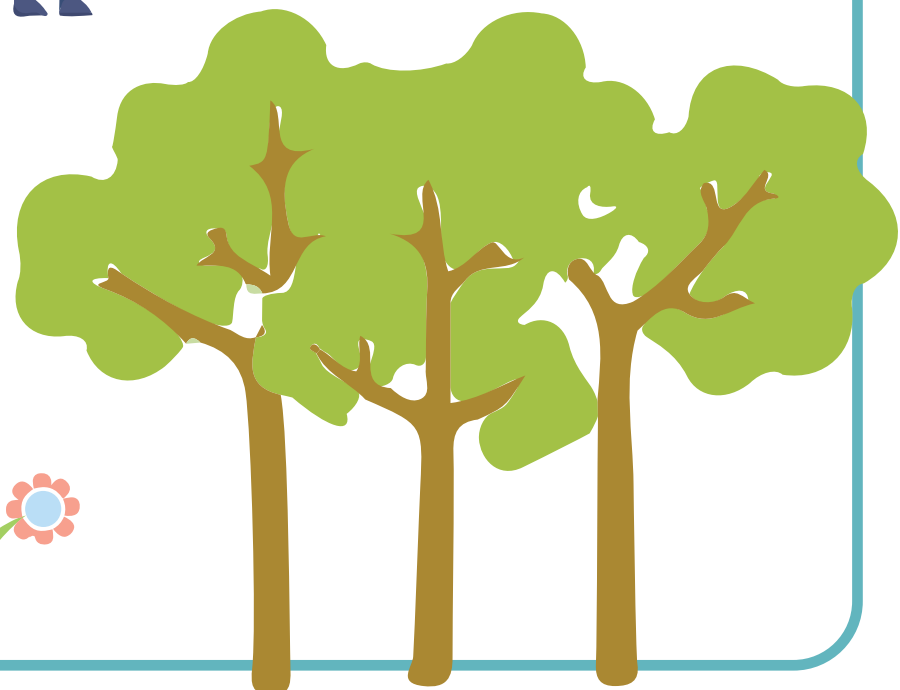
sit and gather throughout the year,

play,

move on the pathway,

bring your dog,

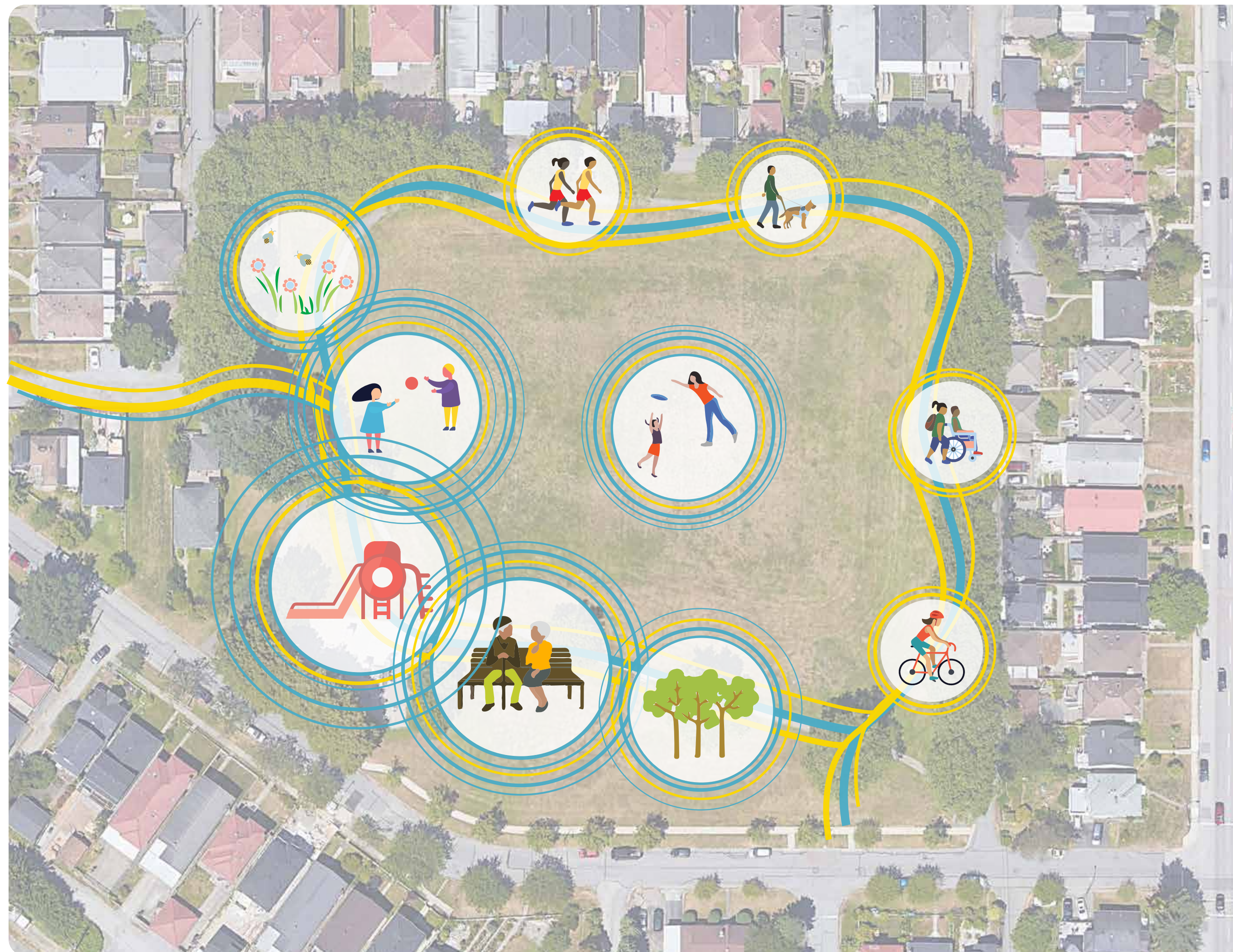
and enjoy nature.



PROJECT PRINCIPLES

We heard General Brock Park described as the backyard of this growing community.

The aim of the park renewal is to provide more opportunities to sit and gather throughout the year, play, be active, enjoy nature, and bring the whole family to the **neighbourhood backyard!**



Proposed Activities in General Brock Park

Based on what we heard, we developed the following project principles:



Provide **amenities for passive and active year-round use** with considerations for Vancouver's seasonally wet weather + increasingly warm summers.



Improving biodiversity by planting more trees + native species with a focus on increasing the tree canopy and adding natural areas that supports birds, pollinators and other urban wildlife.



Contribute to an **active + healthy neighbourhood** with spaces for sports, fitness, recreation and connections to a City-wide walking, cycling and rolling trail network.



Create an **inclusive + playful space for children of all ages** and abilities with a range of options for play + recreation.



Support a **vibrant + welcoming community** with opportunities for people to gather, hold community events, socialize and connect with each other.

CONCEPT DESIGN



0 10 50M 1:300

The Neighbourhood Backyard *

- 1 Main 400m Loop - Asphalt
- 2 Play Path - Rubberized Surfacing
- 3 Paved Path
- 4 Gravel Path
- 5 Picnic Shelter (5x9m)
- 6 New Sport Court (Replacing the Existing)
- 7 Play Area - Rubberized and Wood Fibar
- 8 Cooling Station
- 9 Picnic / Gathering
- 10 Meadow Planting
- 11 Field
- 12 Bioretention Area / Rain Garden
- 13 Lawn / Flex
- 14 Log Seating
- Proposed Trees
- ▲ Park Entry

GENERAL BROCK PARK RENEWAL

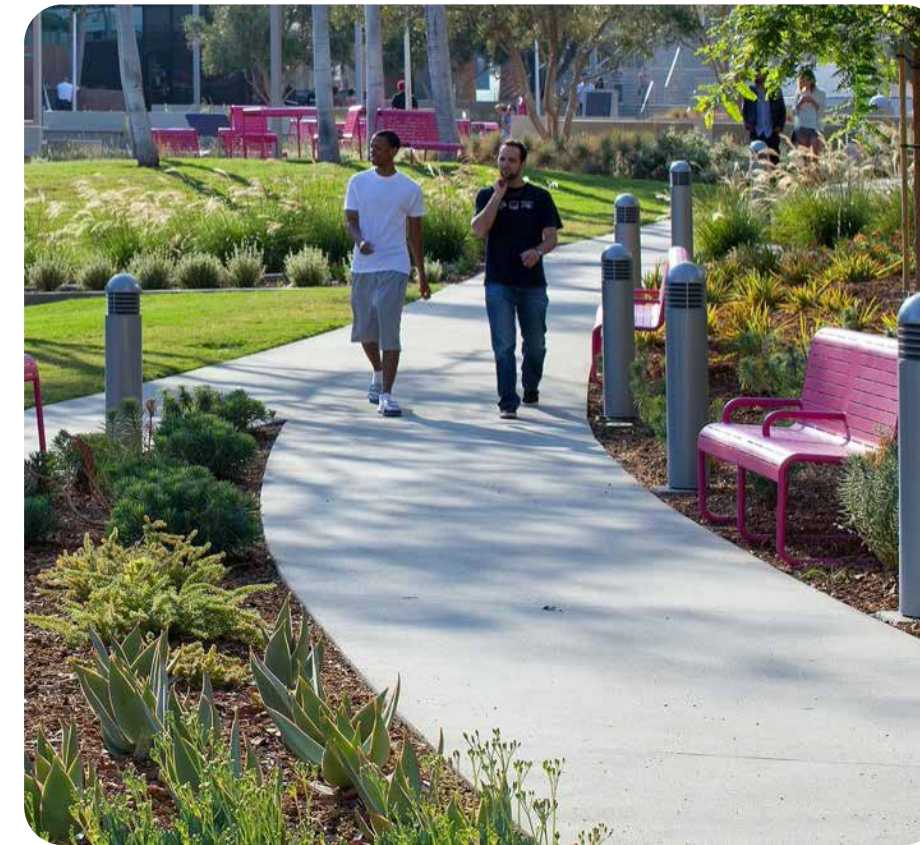
PRECEDENTS



1 Main Loop (200m)



2 Play Path (200m)



3 Paved Paths



4 Gravel Paths



5 Picnic Shelter (5x9m)



6 Sport Court



7 Treehouse Slide



7 Zipline



7 Climber



7 Swings



8 Cooling Station



9 Picnic / Gathering



10 Meadow Planting



11 Field



12 Bioretention Area



13 Lawn / Flex



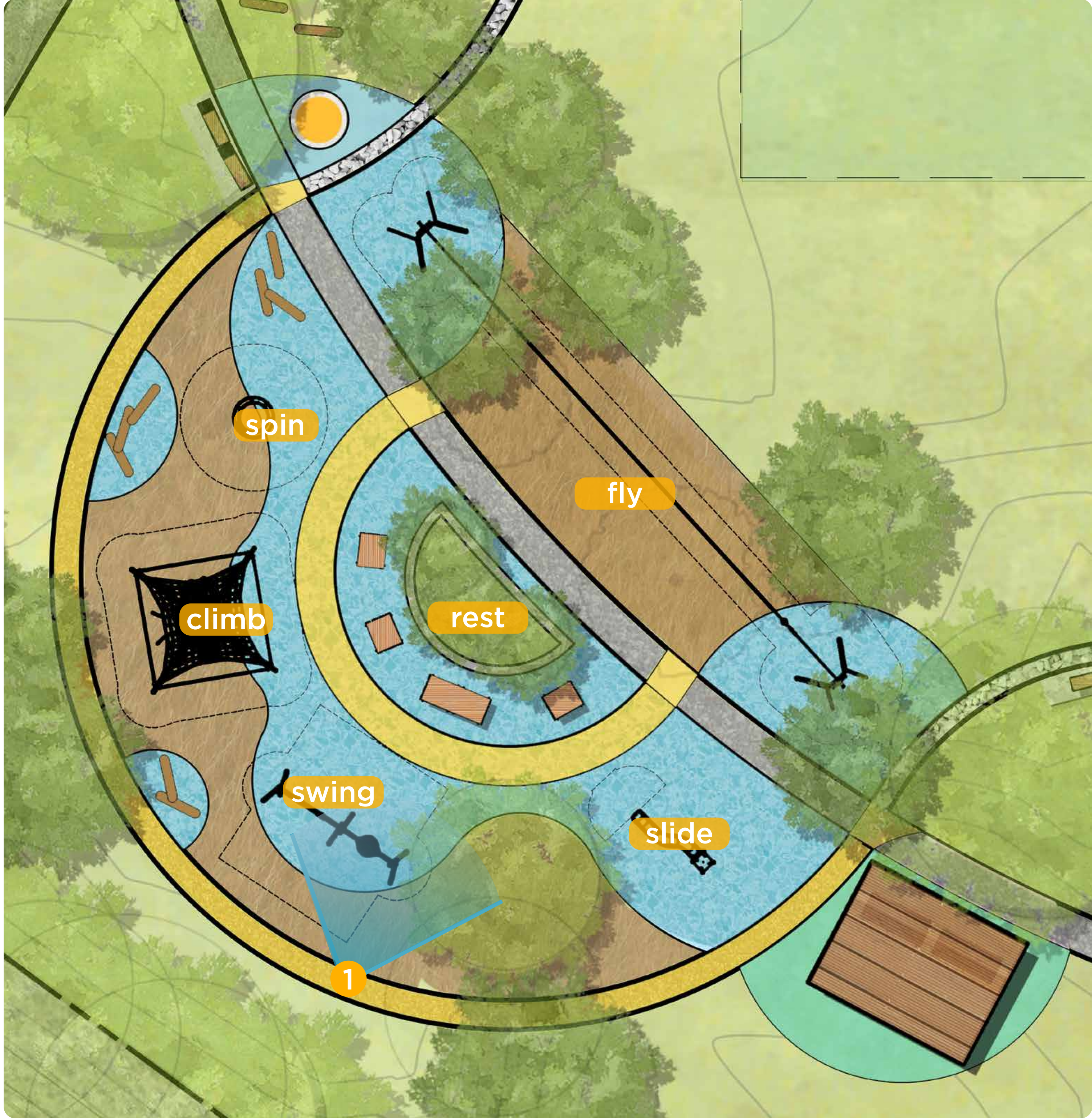
14 Park Edge Treatment



14 Log Seating

GENERAL BROCK PARK RENEWAL

PLAY FEATURES



1 Conceptual render of the proposed play area



spin



climb



swing



slide



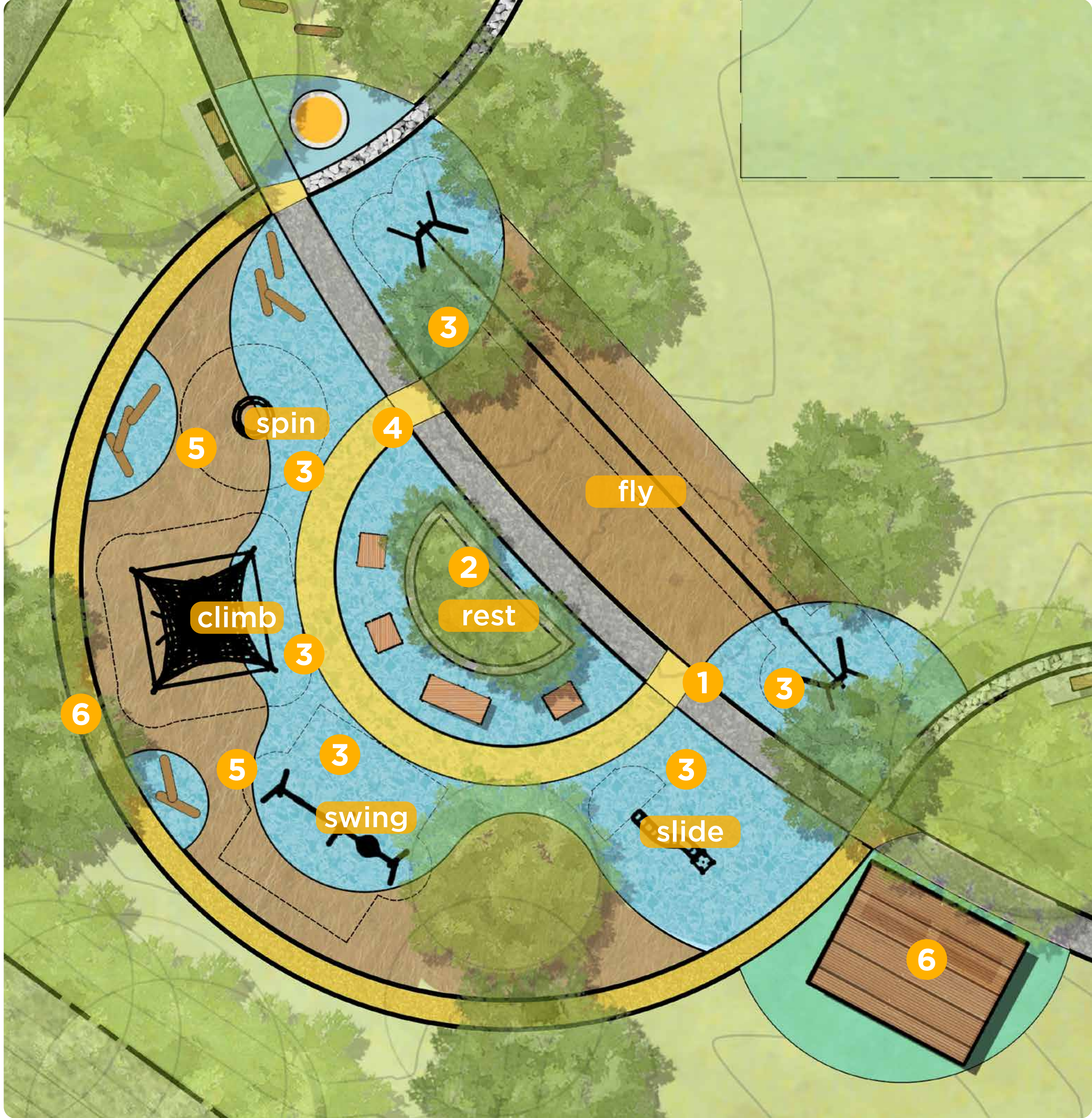
rest



fly

GENERAL BROCK PARK RENEWAL

DESIGN PRINCIPLES - Inclusive Play



We are aiming to provide a range of play features for a variety of ages, abilities and interests with the following features:

1 Central planted rest area



4 Rest areas



2 Range of play features



5 Visual cues for different zones



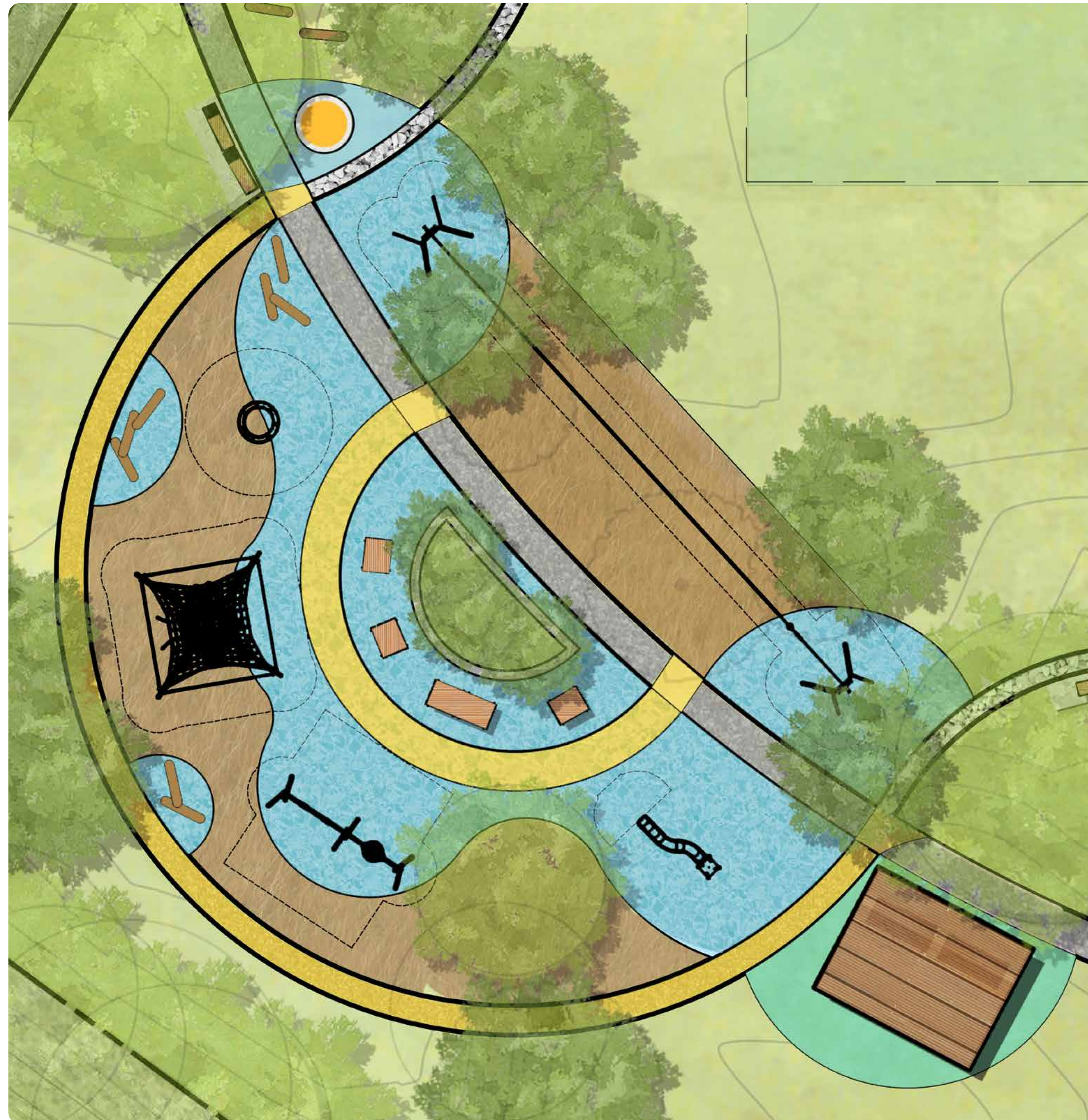
3 Accessible rubber surfacing



6 Covered and shady areas



PLAY AREA - What do you think?

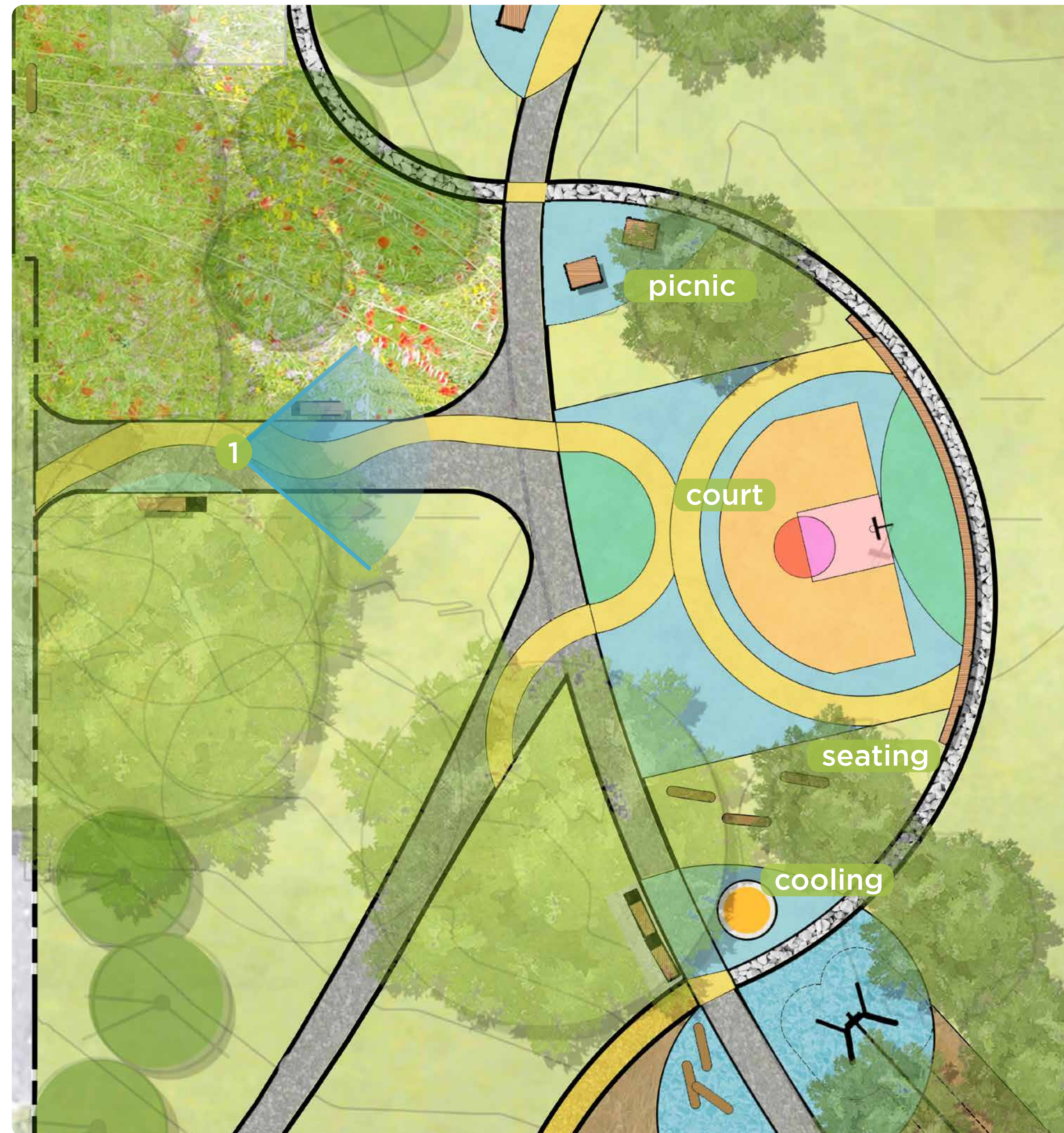


What do you like about the design of the play area?

Do you think anything is missing?

Does the design meet your needs?

MULTI-USE SPORT COURT



0 5 10 50M



1:100



1

Conceptual render of the proposed multi-use sport court

The proposed multi-use sport court will replace the existing ball hockey court at the northwest corner of the park.



court



picnic

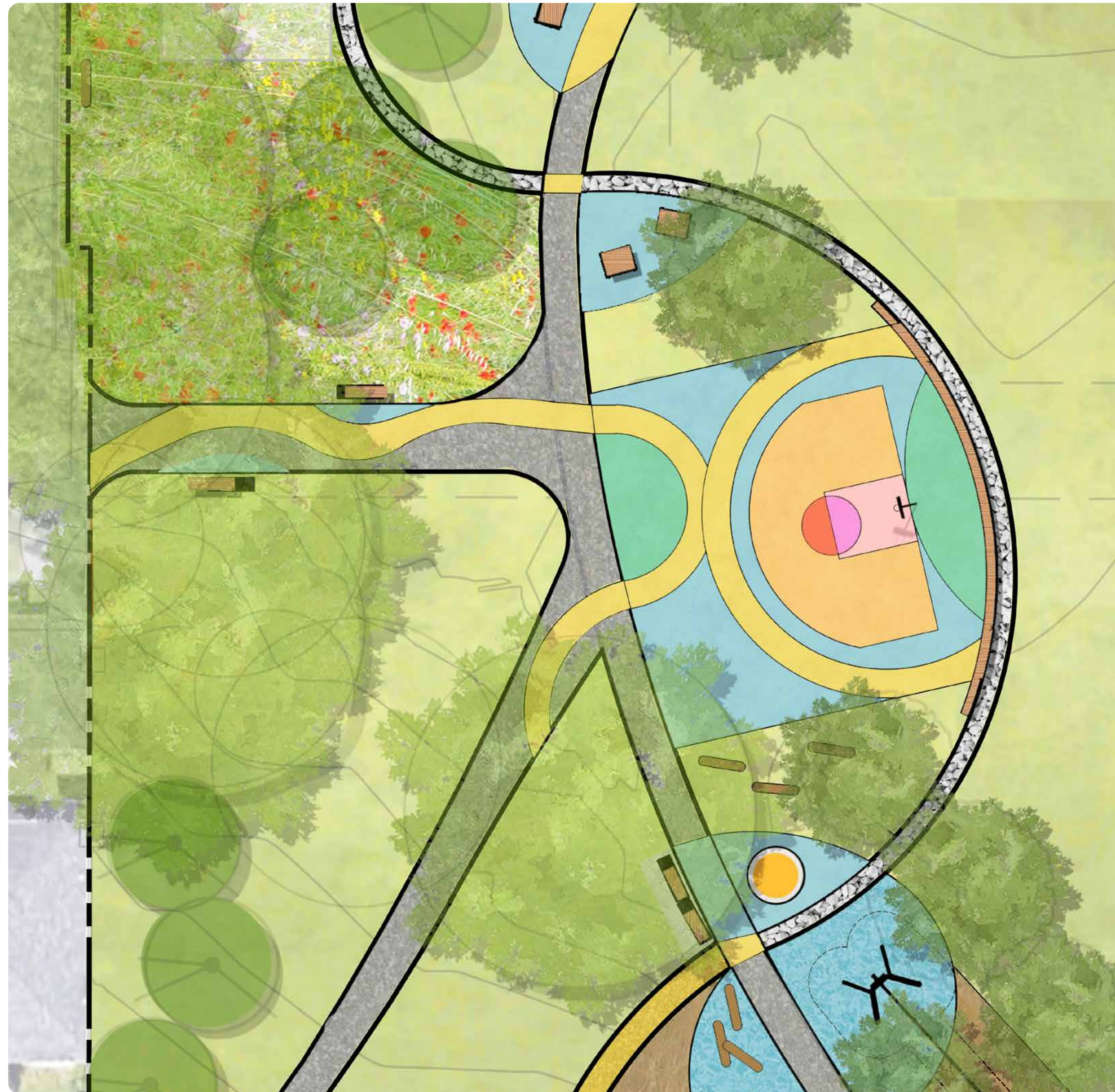


log seating



cooling station

SPORT COURT - What do you think?



What do you like about the design of the sport court?

Do you think anything is missing?

Does the design meet your needs?

MAIN LOOP + PARK EDGE ENHANCEMENT



main loop



meadow



park edge enhancement

What do you like about the design?

What do you think is missing from the design?

Will the design meet your needs?