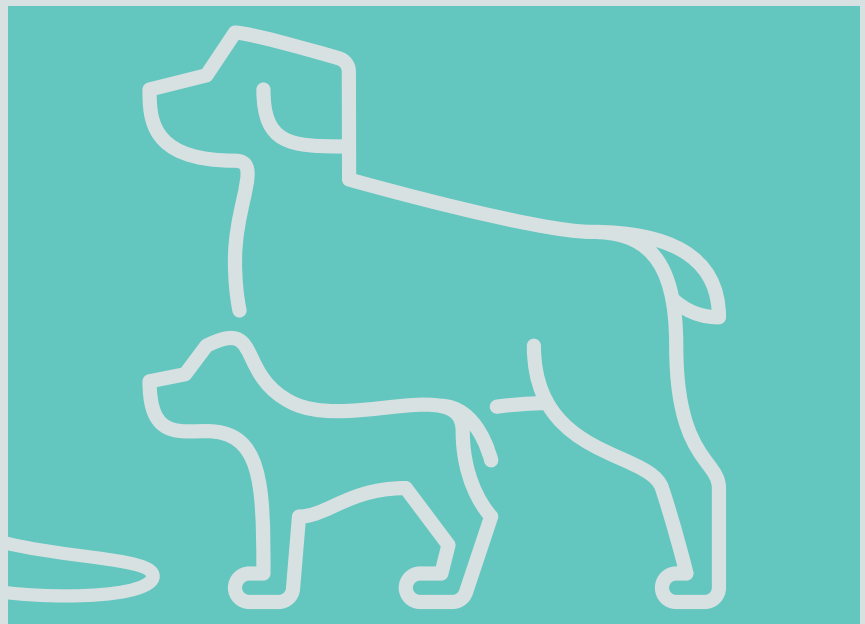


Granville Park Proposed Off-Leash Area

Engagement Summary

December 13, 2021



Contents

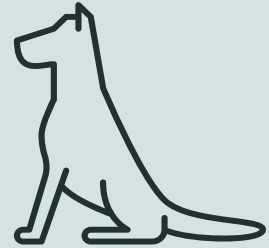
SUMMARY	3
PROJECT INTRODUCTION	
ENGAGEMENT ACTIVITIES AND STATISTICS	
CURRENT CONDITIONS	4
HOW DO PEOPLE CURRENTLY USE THE PARK?	
LIKES AND DISLIKES OF FENCED-IN DOG OFF-LEASH AREAS	
LOCATING AN OFF-LEASH AREA	6
KEY CONSIDERATIONS	
AMENITIES AND FEATURES	9
DESIRED AMENITIES	
INTEREST IN ENRICHMENT AND AGILITY	
PREFERRED ELEMENTS FOR AGILITY	
SIZE OF DOGS OF RESPONDENTS	
SMALL/SHY DOG AREA ANALYSIS	
GROUND SURFACING	10
PREFERENCES	

SUMMARY

INTRODUCTION

Between September 23rd and October 15th, the Vancouver Board of Parks and Recreation conducted an online questionnaire to understand respondents' current relationship to Granville Park and to gather input on the design and amenities for a proposed fenced-in dog off-leash area (OLA) in the park. The options provided in the questionnaire were based on guidelines from the People, Parks and Dogs Strategy (Vancouver Park Board, 2017), as well as feasible options based on existing site conditions.

The results from this survey will be used to inform the conceptual design for the next round engagement. In the next round of engagement, respondents will be asked to provide their feedback on the proposed concept to further develop a plan that benefits all park users.



ENGAGEMENT ACTIVITIES AND STATISTICS

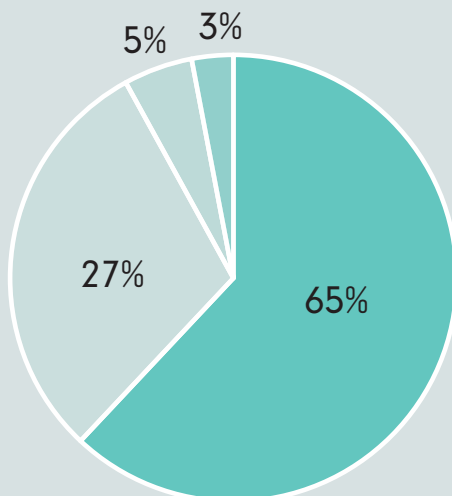
Demographics



660

Online Surveys Completed

19,850 postcards sent out to all households within a 15 minute walking radius from the park.



- 65% of respondents identified as being dog owners who live near the park.
- 27% of respondents identified as being nearby residents who do not own a dog.
- 5% of respondents identified as dog owners who use the park but do not live near it.
- 3% of respondents identified as being a park user but do not live near it.

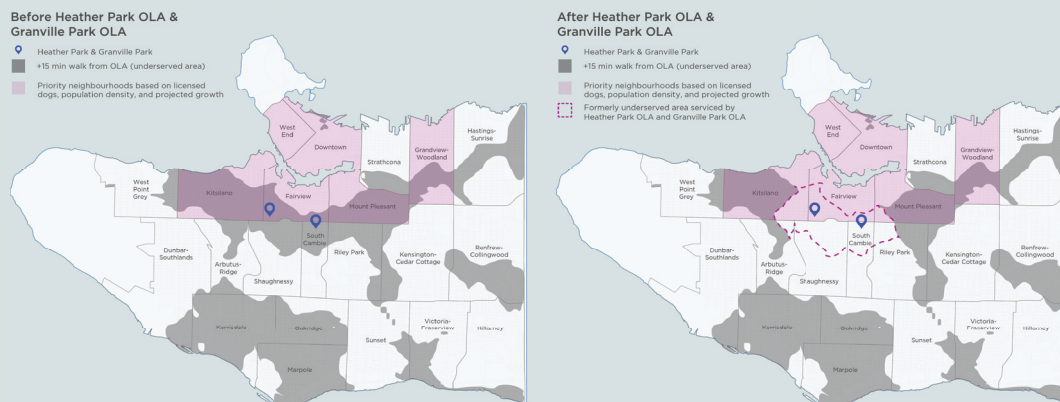
CURRENT CONDITIONS

CURRENT CONDITIONS

Granville Park is a unique and vibrant community space that effectively borders the Fairview, Kitsilano, and Shaughnessy neighborhoods. Pine Street divides the park into two distinct areas - west and east. The Granville Children's Park is located west of Pine St. and has a long, linear, lawn with a small playground. The park area east of Pine St. has a large lawn that supports informal recreational activities.

The People, Parks and Dogs Strategy identified the importance of providing off-leash areas (OLAs) within a 15-minute walk for most residents. An OLA at Granville Park will increase access for dog off-leash activity in two priority neighbourhoods that are currently underserved. Granville Park has suitable space and amenities that a fenced off-leash area could be added while maintaining space for other activities.

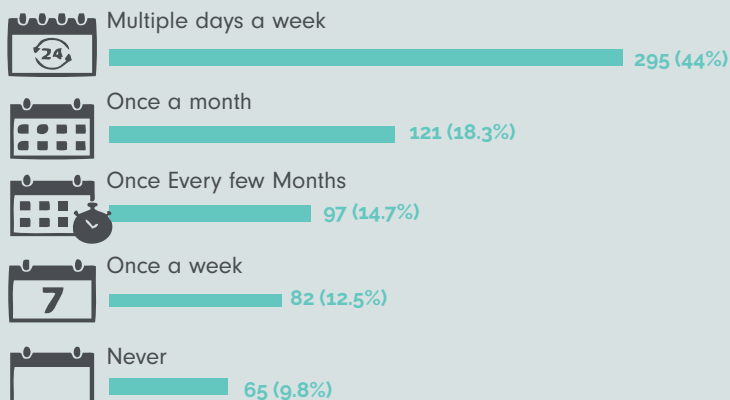
The maps below show how much of the underserved area can be serviced by off-leash areas at both Granville and Heather Parks.



HOW DO PEOPLE CURRENTLY USE THE PARK ?

We wanted to learn how people currently use the park to ensure that all users are welcomed in a park that incorporates a new dog off-leash area.

How often do you visit the park?

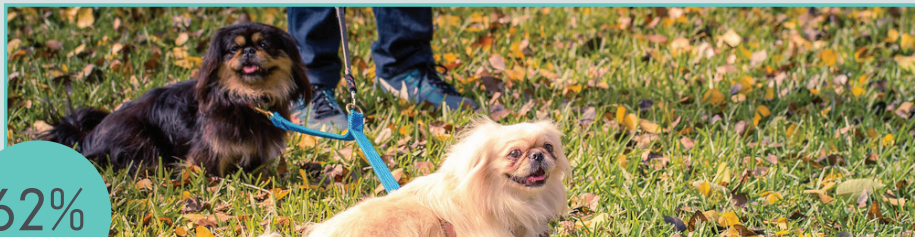


CURRENT CONDITIONS

What activities do you enjoy at the park?

62%

Walk my dog



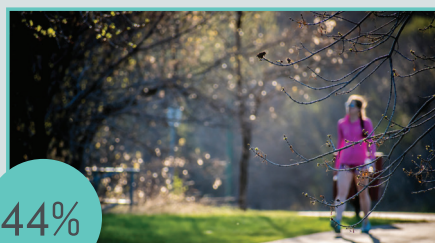
45%

Sit and relax



44%

Walk through the park to get to other destinations



39%

Socialize



15%

Exercise / play sports on my own



15%

Play Tennis



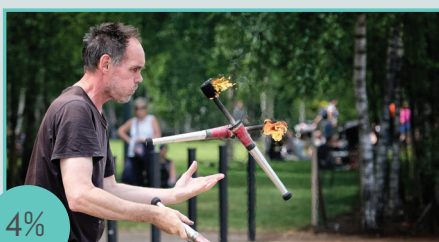
7%

Participate in an organized activity/sport



4%

Other



2%

Lawn Bowling



LOCATING AN OFF-LEASH AREA

LIKES AND DISLIKES OF FENCED OFF-LEASH AREAS

To ensure the proposed fenced-in dog off-leash area (OLA) meets the needs of all park users, we wanted to learn from respondents what they like about OLAs.

What do you like about fenced-in dog off-leash areas?

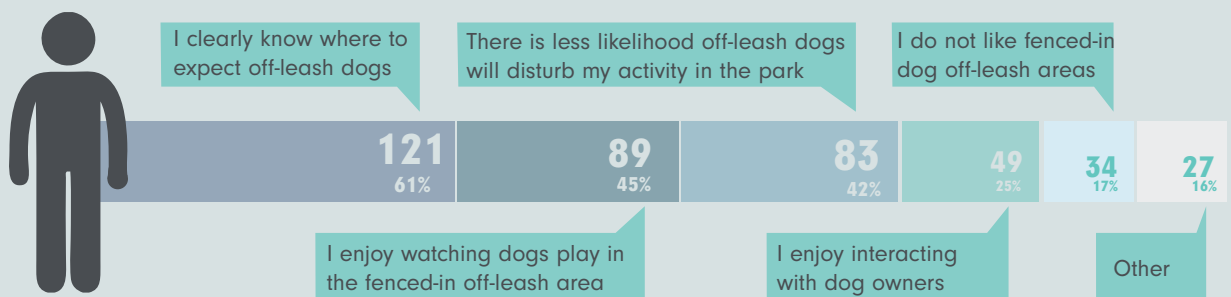
Dog Owners

[461 Respondents]



Non-Dog Owners

[199 Responses]



Key Takeaways

- Almost 90% of dog owners like fenced OLAs because their dog(s) can exercise in a safe space.
- 85% appreciate that fenced OLAs provide their dog the opportunity to socialize with other dogs.
- For non-dog owners, the top three reasons to like fenced OLAs are:
 1. They clearly know where to expect off-leash dogs.
 2. They can watch dogs play.
 3. There is less likelihood of off-leash dogs disturbing their activities in the park.

LOCATING AN OFF-LEASH AREA

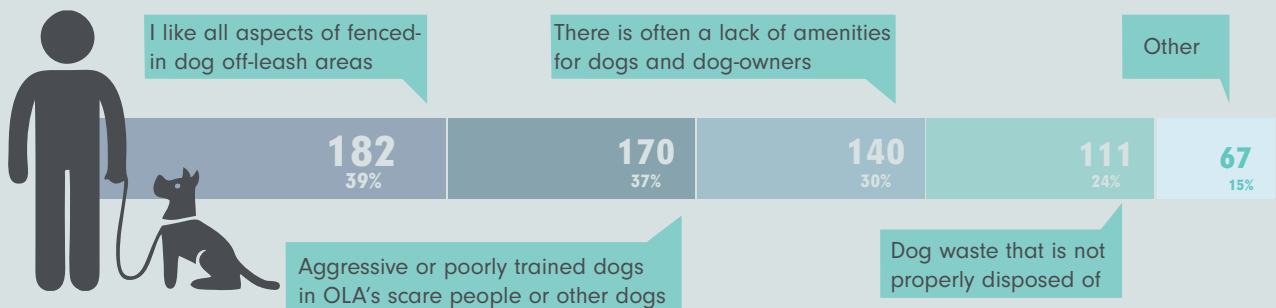
LIKES AND DISLIKES OF FENCED OFF-LEASH AREAS

In addition to learning what people like, we also wanted to know what people did not like about dog off-leash areas in order to address these issues in the proposed OLA.

What do you dislike about fenced-in dog off-leash areas?

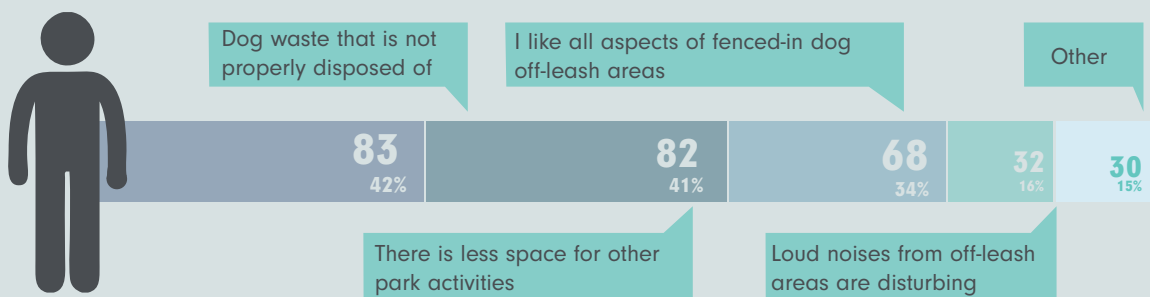
Dog Owners

[461 Respondents]



Non-Dog Owners

[199 Responses]



Key Takeaways

- 39% of dog owners like all aspects of OLAs.
- 37% are concerned about aggressive or poorly trained dogs in OLAs scaring or injuring other dogs and people.
- 30% felt that there is often a lack of amenities for dogs and dog owners.
- Non-dog owners are most concerned that dog waste is not properly disposed of and that there is less space for other park activities.
- Thirty-four percent of respondents liked all aspects of OLAs.

LOCATING AN OFF-LEASH AREA

CURRENT CONDITIONS

What factors do you think we should consider when deciding where to place a fenced-in dog off-leash area in this park?

Locating the fenced-in dog off-leash area (OLA) appropriately within the park is important to ensure the needs of dog owners and non-dog owners are met and that conflict between users are mitigated. We asked dog owners and non-dog owners to share their perspectives on what we should consider when deciding where to place an OLA.



Park Access



Key Takeaways: Non-Dog Owners

- The top factor to consider is an OLA's interference with park users using the grassy field for non-dog related activities (34%). Many respondents use the park to sit and relax in the summertime, especially during the COVID-19 pandemic, and are concerned that an OLA would prevent these activities from occurring.
- Others are concerned that an OLA would increase the number of dogs who use the park, raising concerns of the safety of children, seniors, and other non-dog owners.
- There was also an expressed desire for greater enforcement of proper dog and dog-owner behaviour (19%).
- 38% of non-dog owners feel the OLA should be located away from the tennis courts and lawn bowling to both prevent unwanted attention from balls, interruption of games (38%).
- 10% of respondents expressed a desire to have it located away from the children's playground.
- Location suggestions included:
 1. The field west of Pine Street (27%)
 2. At a corner of the park (16%).

LOCATING AN OFF-LEASH AREA



Key Takeaways: Dog Owners

- 21% of dog-owners wanted amenities and features for dogs and dog-owners, such as water stations, dog waste disposal, benches, signage, and lighting.
- 14% wanted to ensure that the OLA is large enough for dogs to use/run around and to reduce potential conflict between dogs.
- Respondents wanted to locate the OLA away from these activities to prevent unwanted attention from balls and interruption of games (14% of dog owners)
- Others wanted it near the courts to leave park space for recreational activities (14%).
- Other considerations include proximity to the road and bike path (potentially triggering for certain dogs) and shade from trees for protection from the rain and sun.
- Location suggestions:
 1. The south side of the park (18%),
 2. The field west of Pine Street
 3. A corner of the park (11%).

Key Quotes

”

Proper disposal of garbage, free bags for dog owner use, benches, small dog fenced area and large dog fenced area.

“

”

It should either run along the existing fence line for the tennis courts or be along an edge that does not but off the middle of the park to other uses.

“

”

You would want to place it further away from the tennis court so stray tennis balls don't become dog balls against the players wishes

“

AMENITIES AND FEATURES

AMENITIES AND FEATURES

We asked respondents to indicate their preferred type of amenities features for the proposed OLA. The following section summarizes what we heard about the amenities and features.



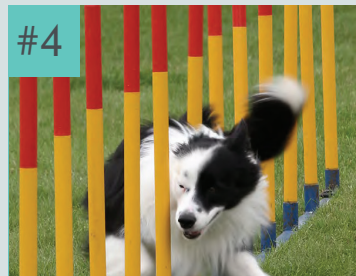
Water Access : For Drinking



Trees for Shade



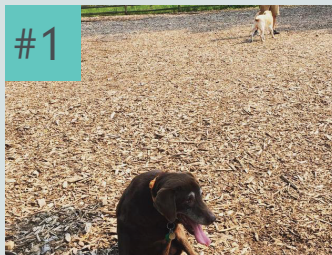
Seating



Agility Features

WHICH DURABLE SURFACE WOULD YOU PREFER FOR AN OFF-LEASH AREA?

Ranked order of preference [1= most preferred, 3= least preferred]



Wood / Cypress Chips



Crushed Granular



Sand

Our Response to Grass in an Off-Leash Area

"Unfortunately, we have observed that grass is very difficult to maintain in OLA's of a similar size. The grass surfaces in some existing OLAs requires a great deal of upkeep and temporary closures to maintain. We have found that the other materials listed in the survey are more resilient in OLAs and help us to maintain a more consistent level of service by greatly reducing both the number and duration of maintenance shutdowns required throughout the year."

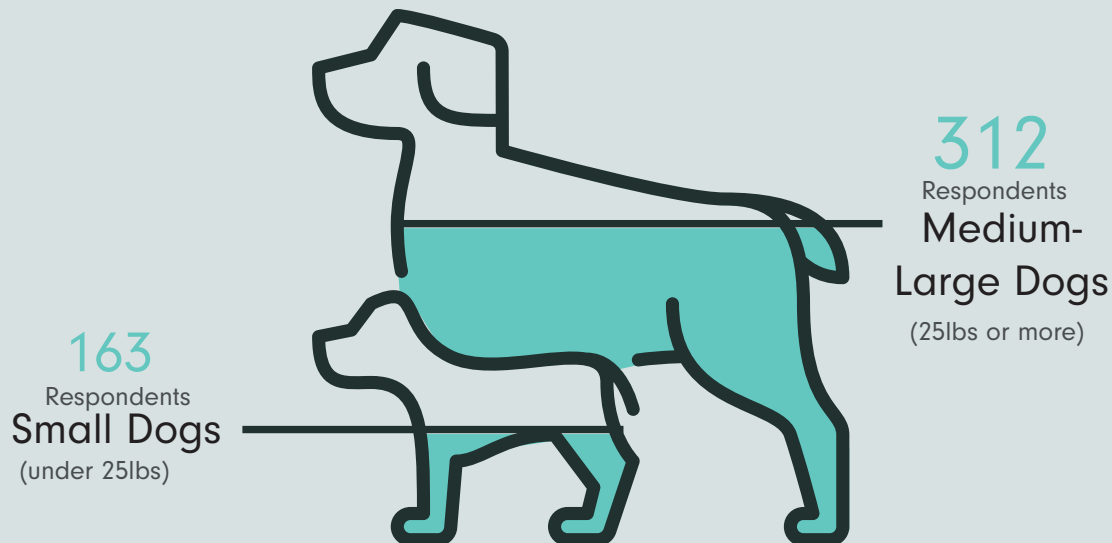
AMENITIES AND FEATURES

SMALL DOG SIZE AREA

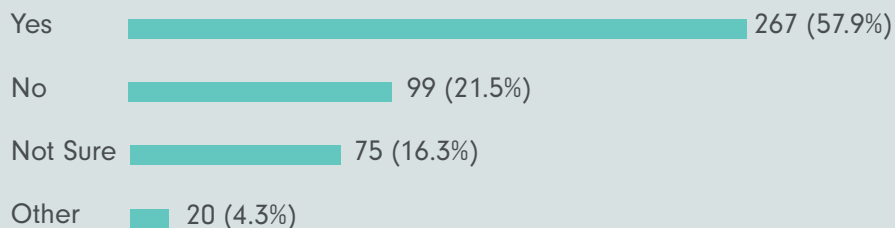
We asked respondents with dogs the size of their dog and if they would value a separate, self-managed small/shy dog area.



Size of dog(s) of respondents



Would you value creating a separate space for a self-managed small/shy dog area within the proposed off-leash area?



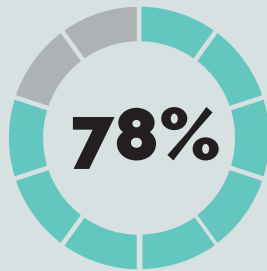
Key Takeaways

- 58% of respondents value having a separate space for small/shy dogs.
- Some respondents expressed that they do not want to have a separate space for small dogs as there is not enough space at the park to accommodate both and/or would cause more conflict between dogs.

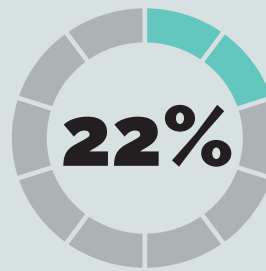
AMENITIES AND FEATURES

PREFERRED ELEMENTS FOR AGILITY

Would you be interested in any elements for enrichment and agility in the proposed off-leash area?



Yes



No

The majority of respondents are interested in having elements for enrichment and agility incorporated into the OLA. Of the elements proposed, ramps are the most preferred followed by hurdles and platforms.

What elements for enrichment and agility would you (and your dog) value most when visiting the Granville Park off-leash area?

Ranked order of preference [1= most preferred, 6= least preferred]

