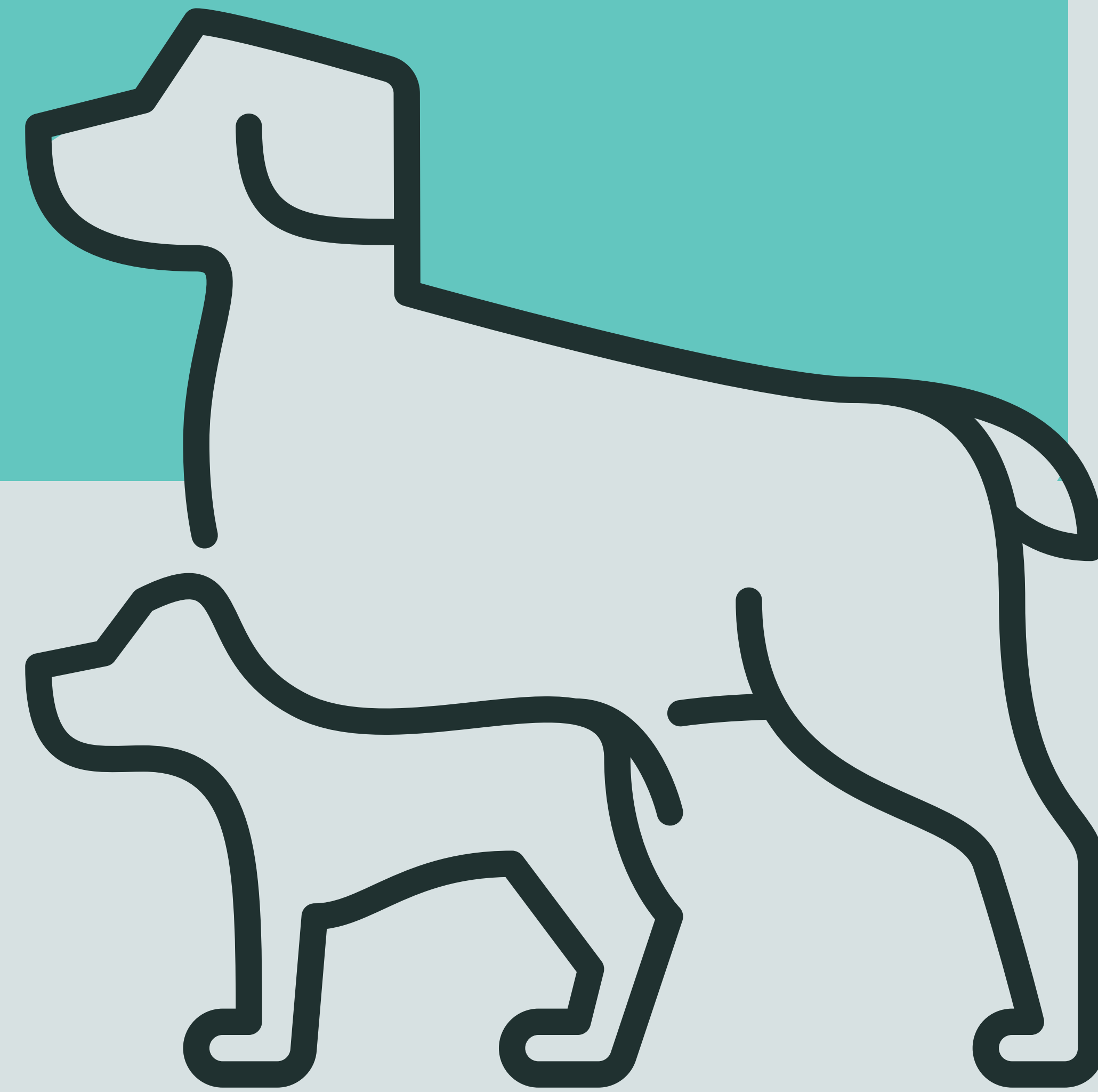


GRANVILLE PARK DOG OFF-LEASH AREA CONCEPT

ROUND 2 ENGAGEMENT



Context



In 2017, we approved the People, Parks and Dogs Strategy to help deliver carefully designed parks for people with and without dogs. The strategy identified the importance of providing off-leash areas (OLAs) within a 15-minute walk of most residents. An OLA at Granville Park will increase access for dog off-leash activity in two priority neighbourhoods that are currently underserved. Granville Park is large enough that a fenced off-leash area could be added with minimal impact to other activity spaces in the park.

In our first round of engagement, we heard from you on topics including park use and proposed amenities. The options provided in the survey were based on guidelines from the People, Parks and Dogs Strategy and an analysis of existing site conditions. The results from the first public engagement have directly informed the design concept in this round of engagement. This round, we are seeking your input on the design concept to help us work toward a refined design that benefits all park users.



Park Access



Pedestrian
Sidewalks/
Park Trails



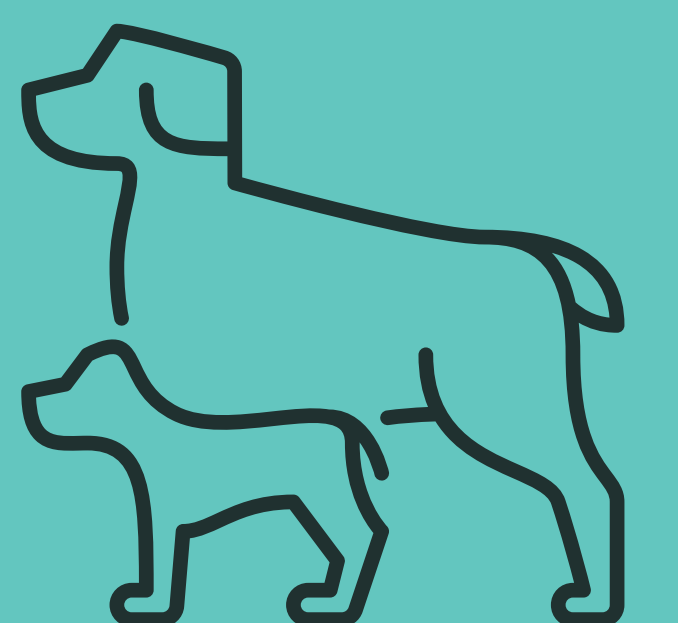
Bike
Informal bike
lane/slow street



Parking
On street
2 hour parking

GRANVILLE PARK DOG OFF-LEASH AREA CONCEPT

Round 2 Engagement: April 27 – May 18



What We Heard

Round 1 Engagement



A Park Use

Granville Park is a popular destination for laid-back activities like walking, sitting, relaxing, and socializing. Many respondents expressed concern about having enough space for the OLA without it interfering too much with these activities. We also heard that visual screening between the main OLA and the tennis courts would be ideal.

Top 4 activities enjoyed at the park:



C Agility Features

78% of dog-owning respondents were interested in having agility features incorporated into the OLA. Of the features proposed, ramps, hurdles, and a platform were the 3 most preferred. Because a ramp and platform are very similar, we included the next most popular stepping stones instead.



B Amenities

We heard that OLAs are important social spaces for both dogs and humans and that there is often a lack of amenities in these spaces. We also heard that 58% of respondents would value having a separate, self-managed space for small/shy dogs. From the first round of engagement, here is how survey respondents ranked some suggested amenities:



D Other Considerations

Caring for OLAs is an on-going task. The heavy concentration of dog activity, animal waste and leaf debris presents maintenance challenges for all types of surfacing. In our first round of engagement, we heard that most respondents preferred wood/cypress chips for surfacing.



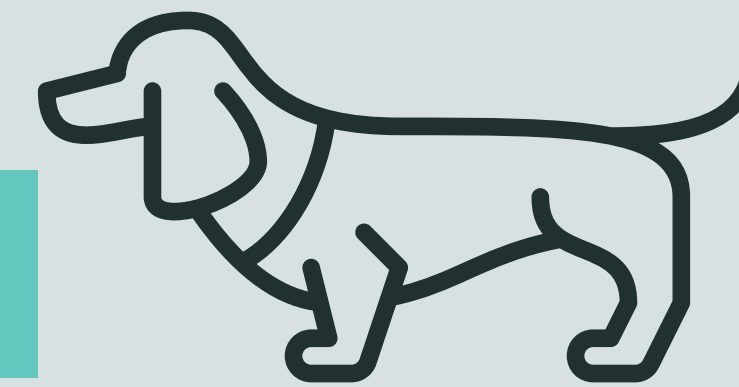
GRANVILLE PARK DOG OFF-LEASH AREA CONCEPT

Round 2 Engagement: April 27 – May 18



Design Concept

Diagram and Section



NOTES + THEMES

The OLAs would be in Granville Park East, away from the playground west of Pine Street. The main off-leash area is south of the main lawn, and a small/shy dog area would be south of the main OLA. The lawn remains a central feature of the park to accommodate a variety of activities. The OLAs will be fenced to make the spaces safe and comfortable for all park users. See below to learn how feedback from the first round of engagement has shaped the design.

- A Park Use**
The size and location of the OLAs ensures that much of the lawn remains open for other activities. By fencing the OLAs, people and activities outside of these areas are less likely to be disturbed by dogs, park users can clearly see the boundaries of the OLAs, and dogs can exercise in a safe space. As we refine the design, we will consider different ways to provide a visual barrier between the OLAs and the tennis courts.
- B Amenities**
We have included the most preferred amenities (water, shade, seating, and agility features) in the design of the OLAs so that they are more comfortable and functional spaces for all. Because there is sufficient space for a small/shy dog OLA at Granville Park, we included one south of the main OLA.
- C Agility Features**
By including agility features in the design, we've maximized the space by providing different exercise options for dogs. The top three preferred agility features have been included in the design and are located close to one another to keep the rest of the OLAs open for running.
- D Other Considerations**
By locating the main OLA away from the existing trees on the southern path, we can better protect the trees and reduce the amount of leaf debris in the OLA. Leaf debris would degrade the surface and create an on-going maintenance challenge. We are working closely with our maintenance teams to identify a suitable surface while also keeping the public's preference in mind. To reduce the number and duration of maintenance shutdowns required, choosing a durable surface that our teams can maintain is very important.

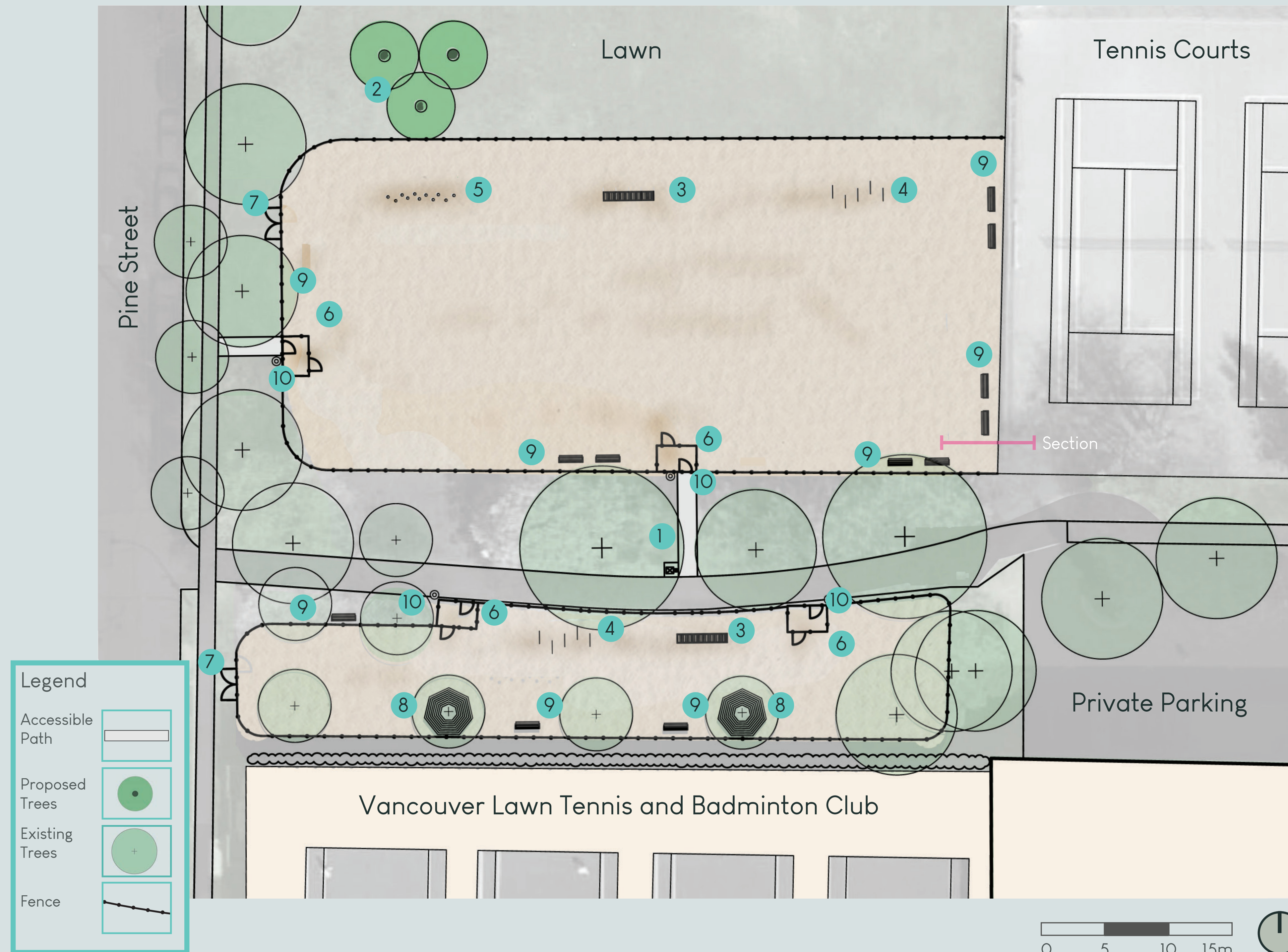
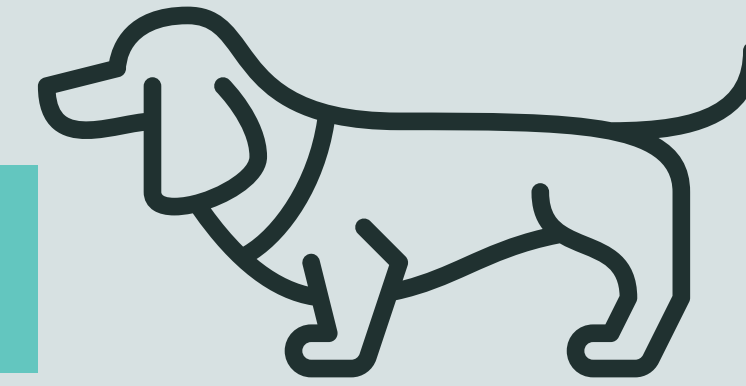
GRANVILLE PARK DOG OFF-LEASH AREA CONCEPT

Round 2 Engagement: April 27 – May 18



Design Concept

Plan and Programming



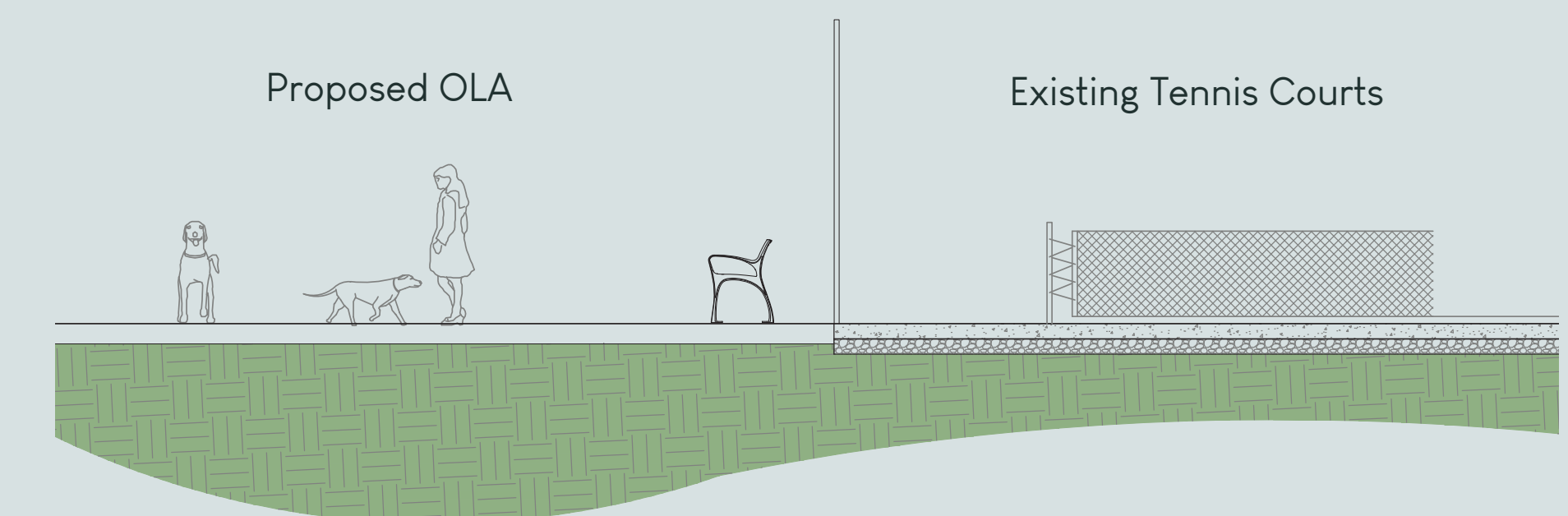
NOTES

- | | |
|------------------------|----------------------|
| 1 Drinking fountain | 6 Double entry gates |
| 2 Proposed shade trees | 7 Maintenance gate |
| 3 Ramp | 8 Seating decks |
| 4 Hurdles | 9 Benches |
| 5 Stepping stones | 10 Waste bins |

View from Pine St

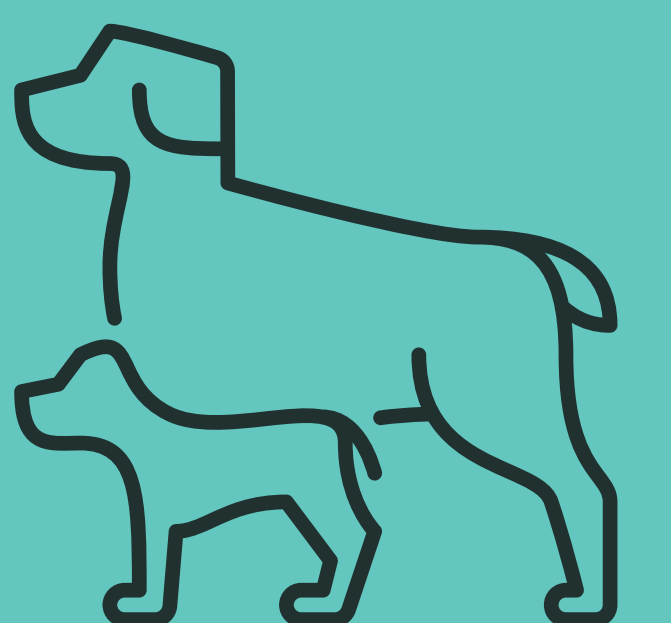


Section looking north to W 14th Ave



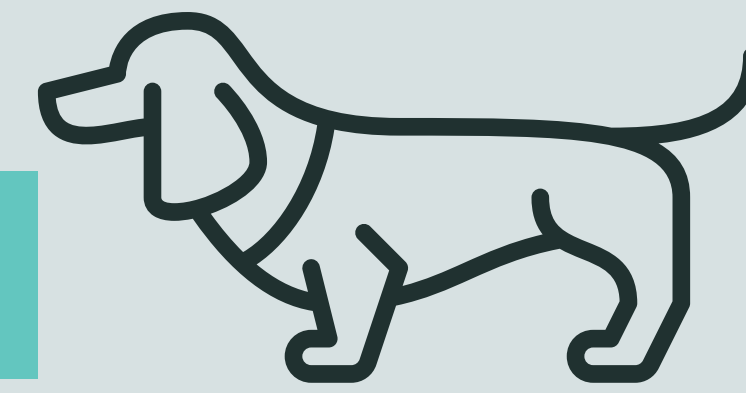
GRANVILLE PARK DOG OFF-LEASH AREA CONCEPT

Round 2 Engagement: April 27 – May 18



Design Concept

Precedent Images



View of OLAs looking west to Pine St



Benches



Drinking fountain



Double gate



Seating decks



Ramp



Fencing



Hurdles



Stepping stones



Small/shy dog area

GRANVILLE PARK DOG OFF-LEASH AREA CONCEPT

Round 2 Engagement: April 27 – May 18



Next Steps



Your feedback will help us refine the design concept, which will be revealed in summer 2022. The recommended concept plan will then be presented to the Park Board for decision in the fall.



Let us know what you think of the proposed dog off-leash areas in Granville Park. For future updates on this project and other off-leash area initiatives, sign up to be added to our mailing list: shapeyourcity.ca/granville-park-ola

GRANVILLE PARK DOG OFF-LEASH AREA CONCEPT

Round 2 Engagement: April 27 – May 18

