



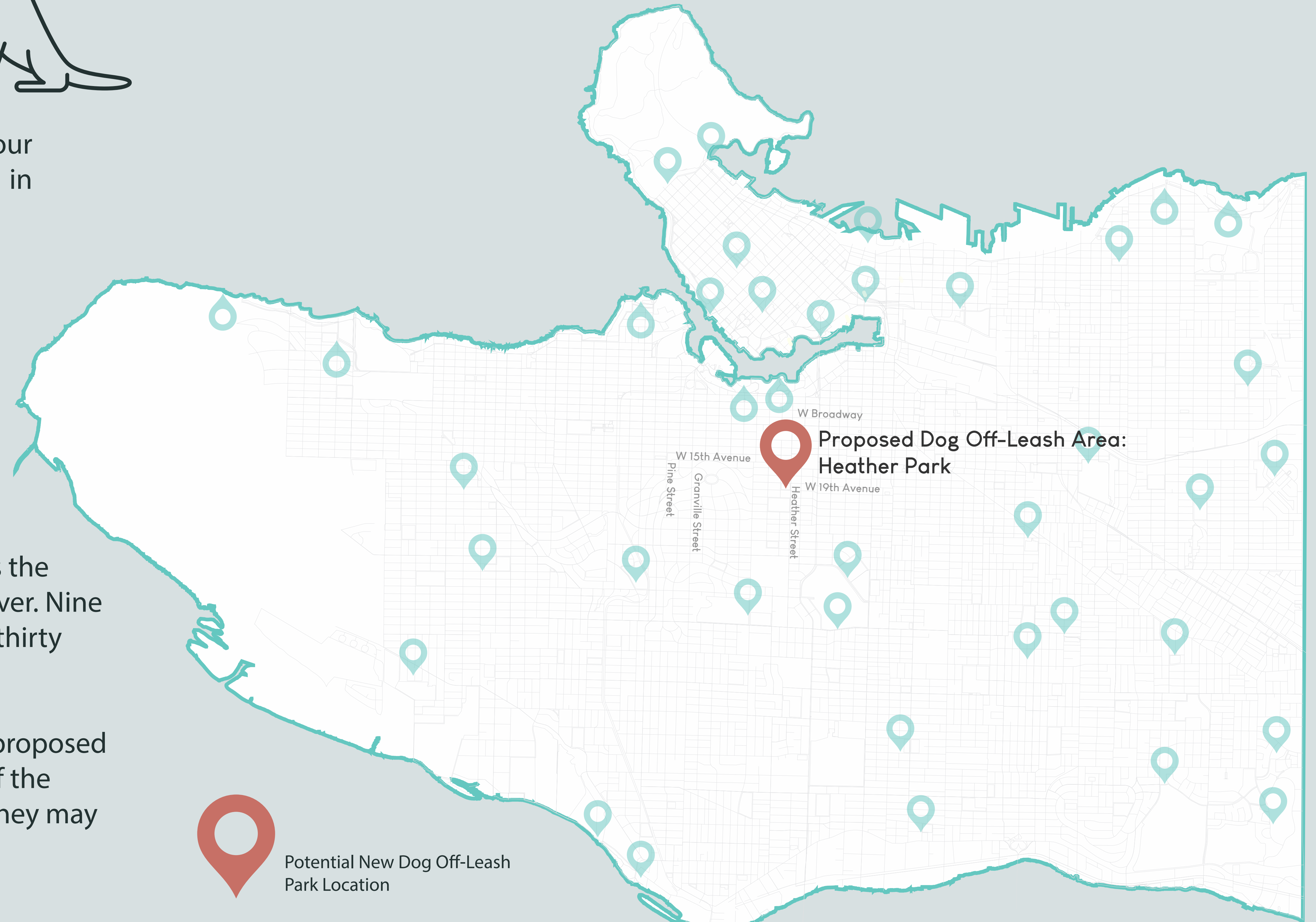
What's Happening?

The Vancouver Park Board is seeking your input on a proposed dog off-leash area in Heather Park.

This proposed off-leash area is guided by The People, Parks & Dogs Strategy (2017) with the goal of creating a safe and engaging park space for people with and without dogs.

The map of Vancouver to the right shows the thirty-nine dog off-leash areas in Vancouver. Nine of the sites on the map are fenced while thirty open spaces are shared.

The following slides will zoom in on the proposed site, while expanding on the principles of the People, Parks & Dogs Strategy and how they may be implemented at this site.



-  Potential New Dog Off-Leash Park Location
-  Existing Dog Off-Leash Parks (The People, Parks & Dogs Strategy)

HEATHER PARK DOG OFF-LEASH AREA

September 2021



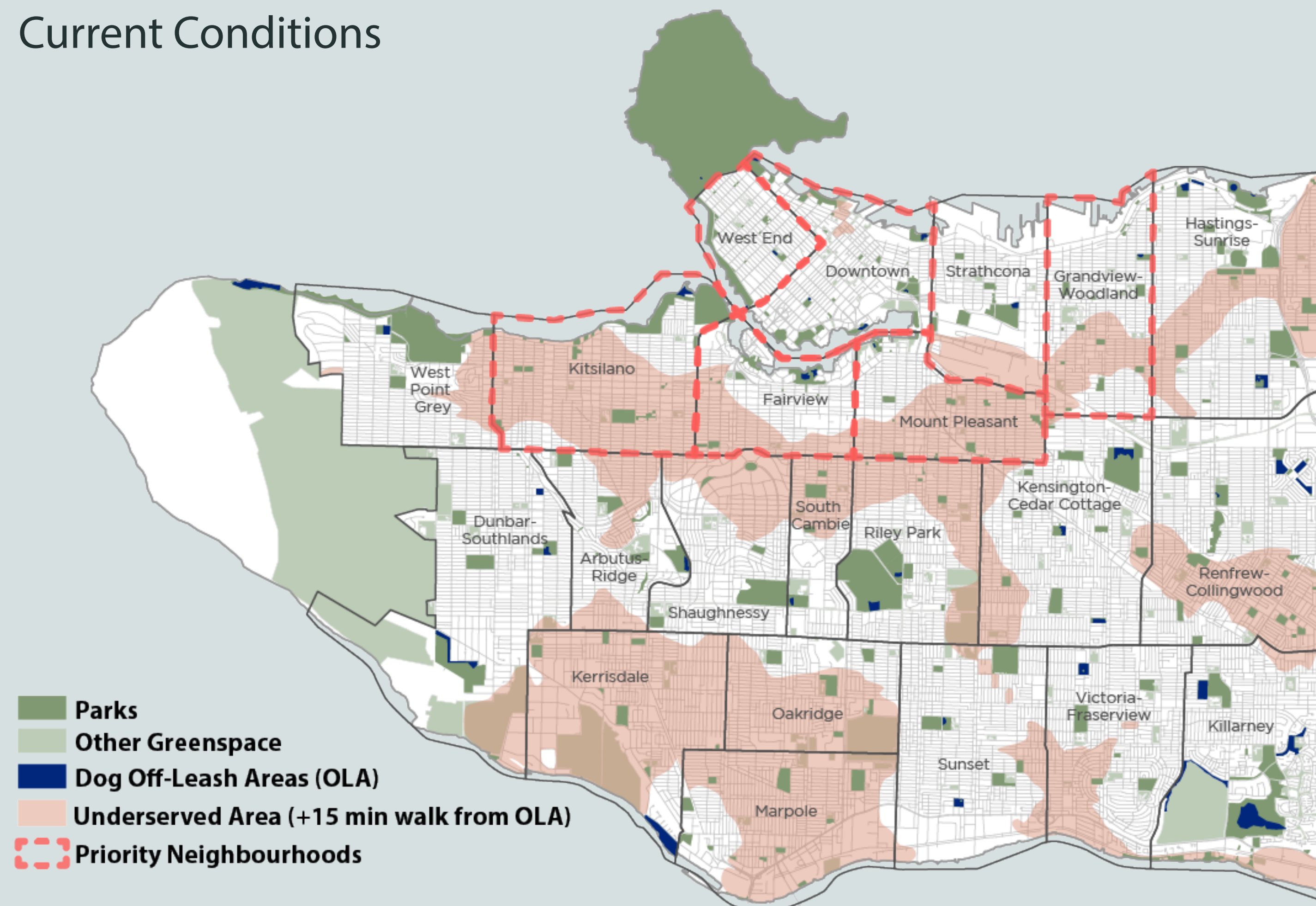


Why Heather Park?

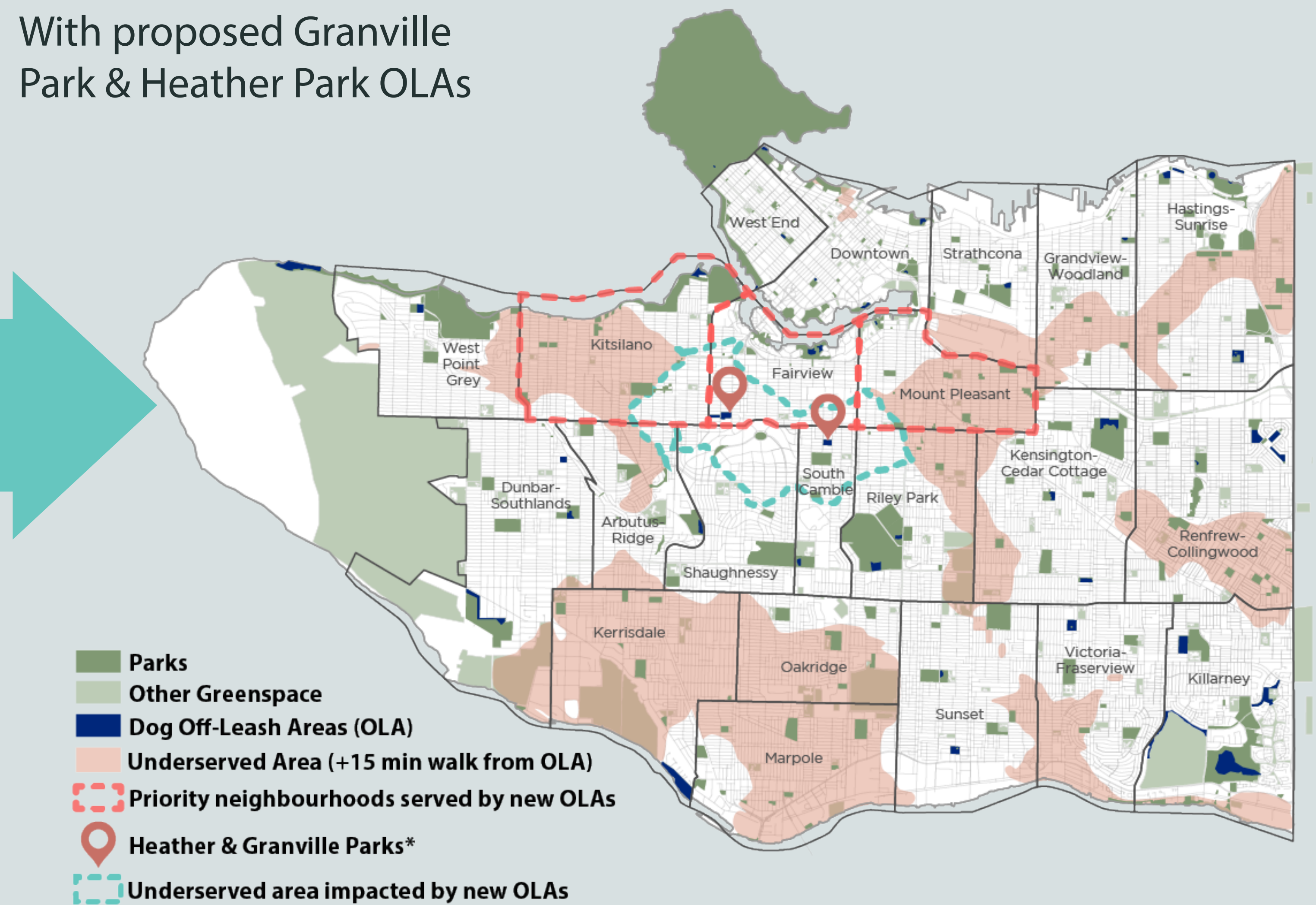
Dog Off-Leash Service Areas

The People, Parks and Dogs Strategy identified the importance of providing off-leash areas (OLAs) within a 15 minute walk for most residents. An OLA at Heather Park will increase access for dog off-leash activity in three priority neighbourhoods that are currently underserved. Heather Park has suitable space and amenities that a fenced-in off-leash area could be added while maintaining space for other activities.

Current Conditions



With proposed Granville Park & Heather Park OLAs



HEATHER PARK DOG OFF-LEASH AREA

September 2021



Design Guidelines



What makes a great dog off-leash area?

Here's what we heard in the People Parks & Dog Strategy as it relates to Granville Park:

Surfacing

- Fine- Crushed Gravel
- Sand
- Wood Chips
- Accessible Surfacing

The selection of surfacing should balance appearance, comfort, durability, maintenance requirements, cost, and safety. Surfacing should also consist of well draining soil, gently rolling terrain, moderate to high sun exposure, and drainage to a suitable area.

Safety

- Secure Fencing
- Adjacent Land uses
- Vegetation
- Circulation

Safety is a key consideration in developing locations for dog off-leash areas. Safety features can include fencing, adequate setbacks from adjacent land uses, vegetation, and accessible circulation.

Amenities

- 41% Water For Dogs
- 40% Open Space
- 37% Secure Fencing
- 34% Waste Receptacles
- 25% Shade
- 18% Separate Area for Small dogs
- 11% Accessible Walking Paths
- 8% Seating

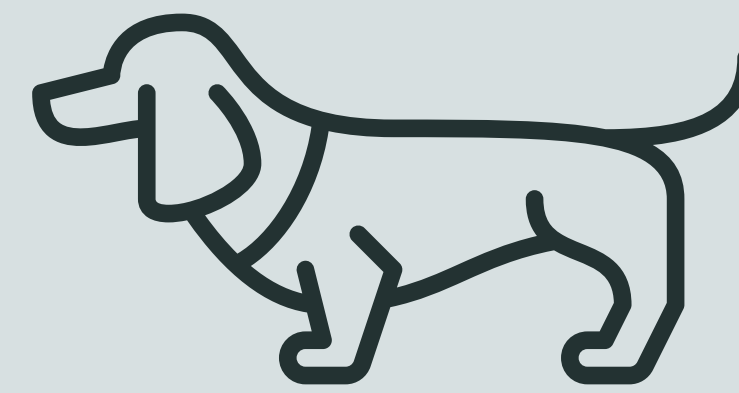
Most valued amenities as ranked by surveys in People, Parks & Dogs Strategy (2017). Participants also picked drinking water for people at 6%.

HEATHER PARK DOG OFF-LEASH AREA

September 2021



Heather Analysis



Neighbourhood Context



The South Cambie neighborhood is sandwiched between Queen Elizabeth Park and Shaughnessy heights. This area is known for its abundance of medical facilities include BC Children’s Hospital, BC Women’s Hospital and Health Care Centre, GF Strong Rehabilitation Centre, and Canadian Blood Services.

Adjacent points of interest include:

- Douglas Park is located to the South.
- Shopping and transportation hub streets can be found several blocks to the north in West Broadway, to the east on Cambie Street.

Park Context

Heather Park is located at 702 W 18th Av, in the South Cambie neighbourhood. This park is currently multi-use consisting of tennis courts, open green space, and a playground.



Approximate Size of Off-Leash Area

Shown for scale reference only. Location and shape of OLA to be determined through public engagement process.

Site Drainage

Generally this site has good drainage due to an older drainage system remaining intact.

Site Amenities

- benches
- picnic tables
- tennis courts
- receives some illumination at night from surrounding street lights

Park Access

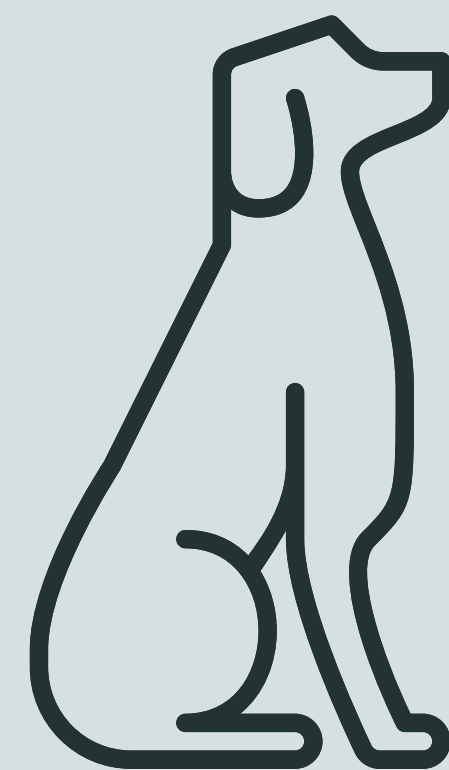
- Pedestrian Sidewalks/Park Trails
- Bike Informal bike lane/slow street
- Parking On street 2 hour parking

HEATHER PARK DOG OFF-LEASH AREA

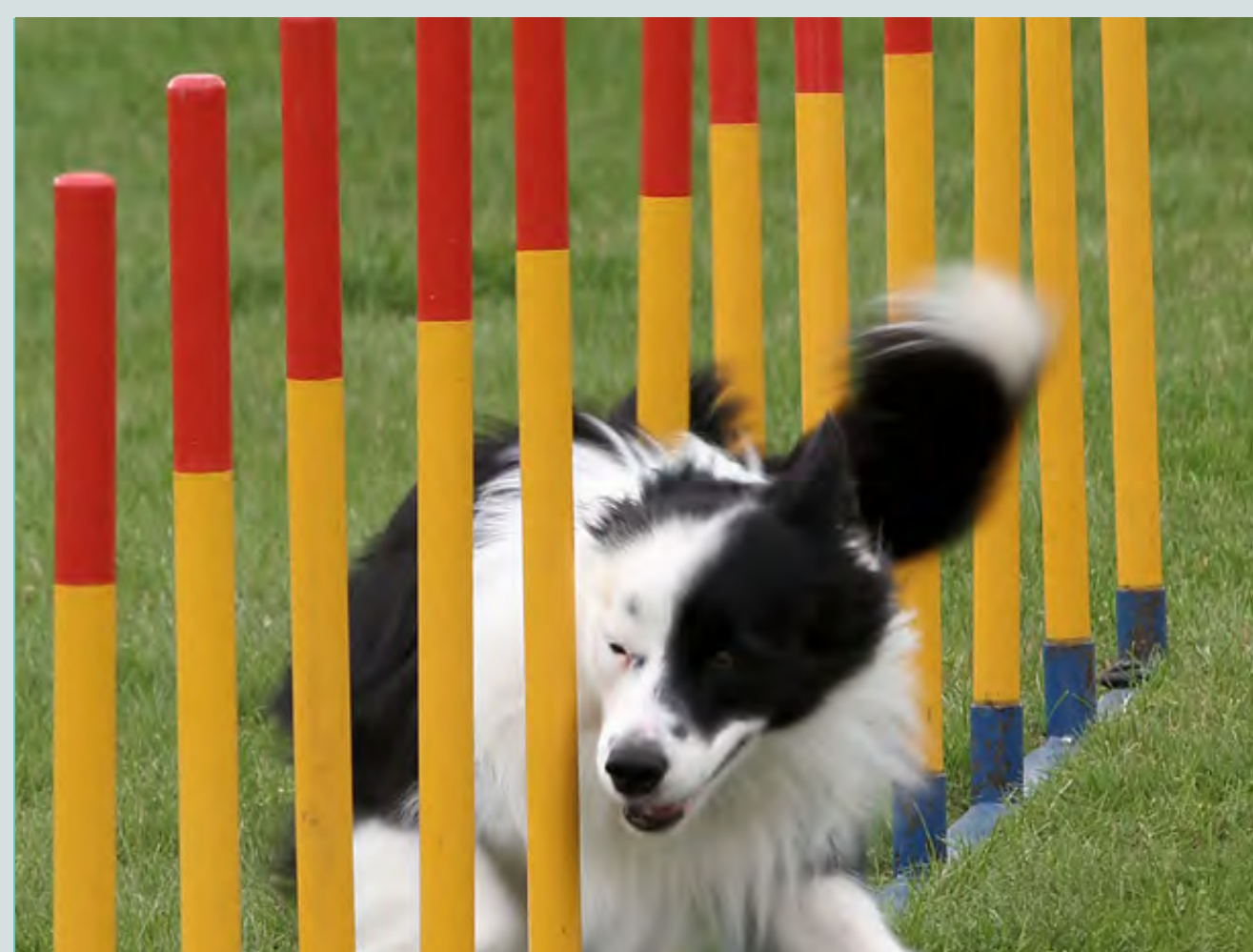
September 2021



Potential Amenities



Amenities



Agility Features



Seating For Owners



Separate Areas for Small Dogs

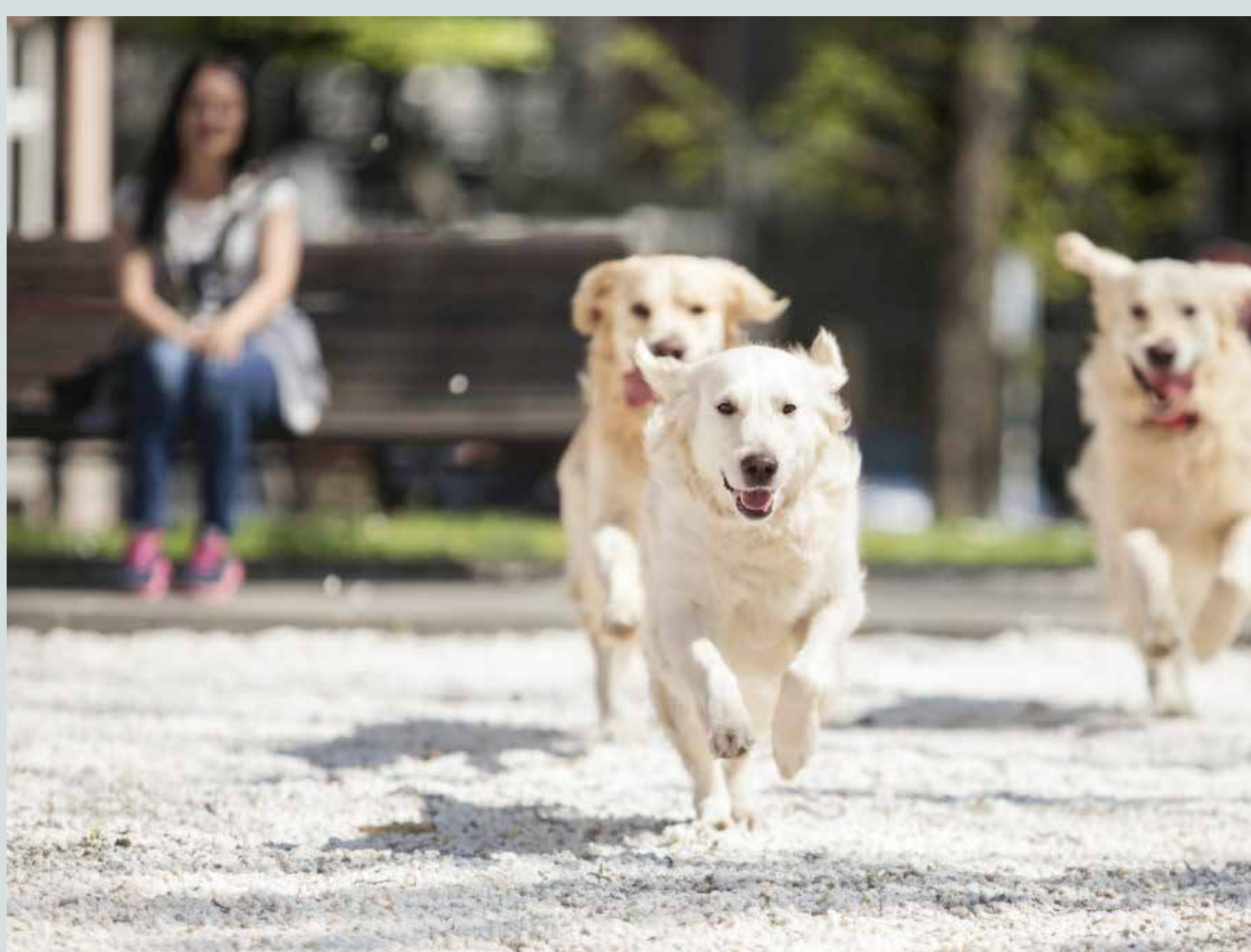


Drinking Fountain for Dogs

Surfacing



Wood Chips



Fine-Crushed Gravel



Sand

HEATHER PARK DOG OFF-LEASH AREA

September 2021

