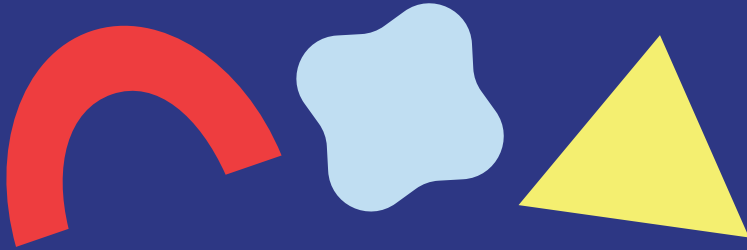


DESIGNING INCLUSIVE PLAYGROUNDS



Help Shape Inclusive Playground Design in Vancouver

Vancouver has over 150 playgrounds. We built many of them before today's understanding of inclusive play. This project will help make sure the playgrounds we build work well for all children, families, and caregivers.

The Vancouver Board of Parks and Recreation is beginning an initiative to make playgrounds more inclusive. We are creating new guidelines for designing inclusive playgrounds across the city. These guidelines will also help us plan an inclusive destination playground at Memorial South Park.

The goals of this work include:

- **Building inclusive, accessible playgrounds.** We want playgrounds to be safe, welcoming, and easy for everyone to use. All children should be able to take part in active play and spend time with others.
- **Helping people connect.** We aim to make spaces where kids, caregivers, and community members can meet, talk, and spend time together.
- **Offering different kinds of play.** Playgrounds should offer a mix of activities with different levels of challenge. This helps children with different needs take part in ways that feel right for them.
- **Going beyond basic requirements.** We want playgrounds that reflect the diversity of the people who use them. This means thinking about sensory, emotional, cultural, and physical needs, along with accessibility.

This work supports the Park Board's goals to improve inclusive play in Vancouver. It aligns with [VanPlay](#) and [other Park Board directions](#) to create inclusive and accessible playgrounds.



What is Inclusive Play?



Inclusive play means people of all abilities, ages, and backgrounds can play together. It goes beyond basic accessibility requirements. Inclusive play looks at physical access, sensory experiences, social connection, and cultural inclusion. All children, caregivers, and community members should feel comfortable and able to join in.

Inclusive Play Design Guidelines



The Inclusive Play Design Guidelines will help us make playgrounds easy to access, safe to use, and welcoming for everyone.

To develop the guidelines, we are:

- Getting input from the community,
- Asking for advice from accessibility and play experts, and
- Reviewing inclusivity best practices to learn what is working in other places.

Memorial South Park Destination Playground

We are renewing the playground at Memorial South Park.

The Park Board [set a goal](#) of creating five inclusive destination playgrounds across Vancouver by 2040. Memorial South Park will be the first of these playgrounds. It will be the first place where we put the Inclusive Play Design Guidelines into practice.



Get involved!

We want to hear your thoughts and experiences with playgrounds. Tell us what “inclusive play” means to you, and what makes playgrounds easier or harder for people to use.

- Take our [online survey](#) by May 26, 2026.
- Visit us at South Vancouver Neighbourhood House’s Centennial Celebration in Memorial South Park. We’ll be there from 11 am-1 pm on Sunday, May 24, 2026.
- To share your input in another language call 3-1-1 by May 26, 2026. A Customer Service agent will connect you to an interpreter to help you complete the survey.

Contact us



Email: InclusivePlaygroundDesign@vancouver.ca
Visit: shapeyourcity.ca/inclusive-playground-design
Call: 3-1-1

