

WELCOME

ᑲᓐᓐᓐᓐᓐᓐᓐ 1/ᓐᓐᓐᓐᓐᓐᓐ 2/Jericho Lands Planning Program Update

Since launching the ᑲᓐᓐᓐᓐᓐᓐᓐ/ᓐᓐᓐᓐᓐᓐᓐ/Jericho Lands planning program in March 2019, we have heard from thousands of people who have helped us identify key interests, ideas and opportunities that are important for the future of the site.

We last engaged the public in late 2021, when we sought your feedback on two conceptual site plan options which were shaped by the Council endorsed draft Guiding Principles and Emerging Site Planning Ideas. We have reviewed and analyzed the responses received and summarized feedback in our Phase 3 Engagement Summary report ([link here](#)).

For much of 2022, the project was paused while the landowners, a joint venture partnership between the xʷməθkʷəy̓əm (Musqueam), Skwxwú7mesh (Squamish), and səliłwətał (Tseil-Waututh) (MST) Partnership and Canada Lands Company (CLC) focused on the Heather Lands project ([link here](#)). Since the fall 2022, the City project team has re-engaged with the joint venture partnership to analyse the feedback from public engagement to date, carry out further technical studies, and begin to work towards a conceptual site plan that would better reflect Indigenous design values and the importance of the site to the Nations. The landowners also conducted additional engagement with Host Nations communities. Looking ahead, we intend to schedule public engagement opportunities in summer 2023 to share a preferred site concept and seek your feedback on it.

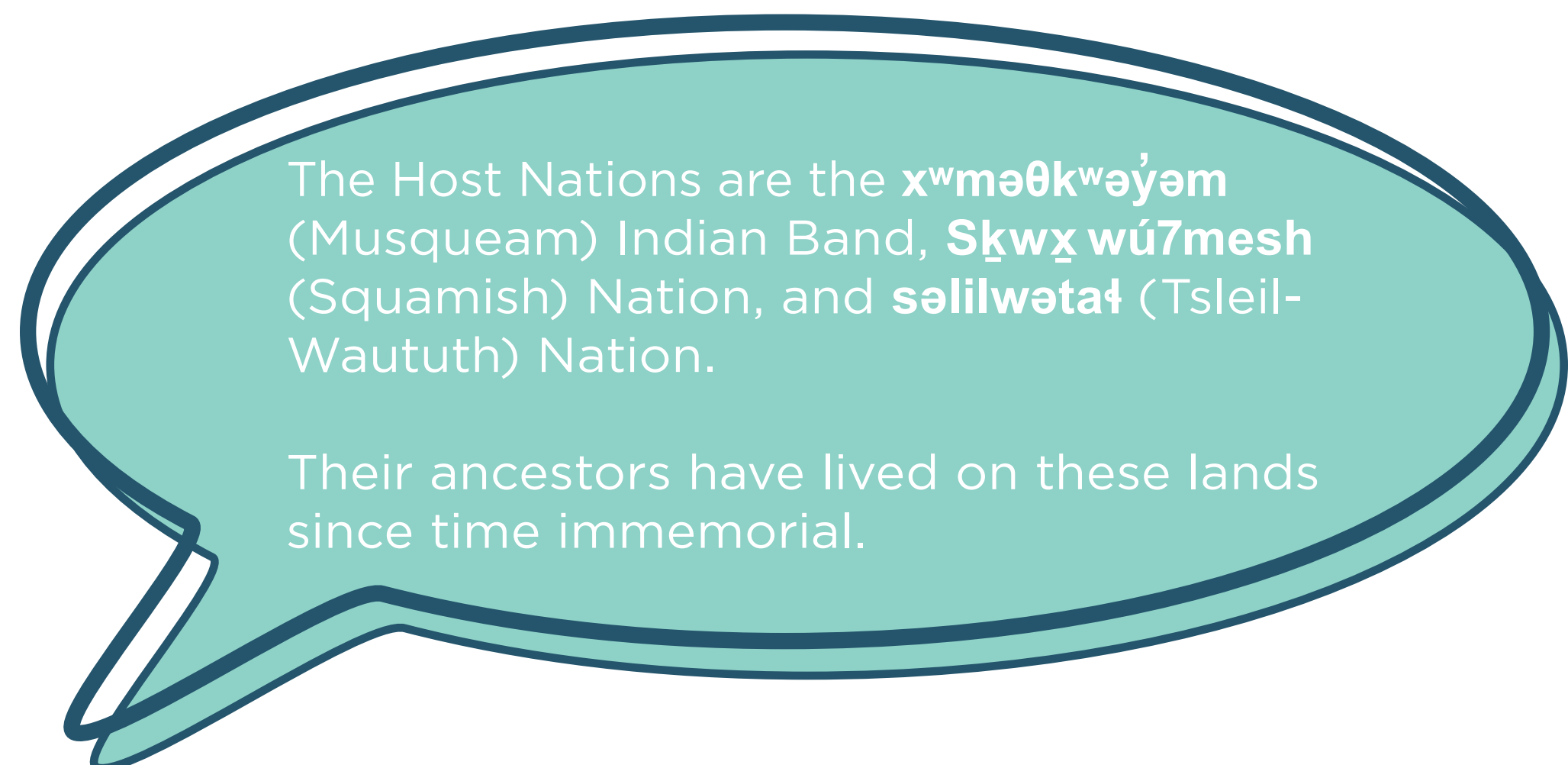
This current phase will provide an update on the project and process, share the outcomes of the engagement with Host Nations community members, and outline next steps in the planning program.



About ᑲᓐᓐᓐᓐᓐᓐᓐ/ᓐᓐᓐᓐᓐᓐᓐ/ the Jericho Lands

(1) ᑲᓐᓐᓐᓐᓐᓐᓐ is the place name in the hə́h̓qəmiᓐəᓐ language spoken by the Musqueam and Tseil-Waututh peoples.

(2) ᓐᓐᓐᓐᓐᓐᓐ is the place name in the Skwxwú7mesh language spoken by the Squamish people.



The Host Nations are the xʷməθkʷəy̓əm (Musqueam) Indian Band, Skwxwú7mesh (Squamish) Nation, and səliłwətał (Tseil-Waututh) Nation.

Their ancestors have lived on these lands since time immemorial.

TABLE OF CONTENTS

This document includes a series of information boards from both the City of Vancouver and the landowners, a joint venture partnership between the ᐃᐃᐃᐃᐃᐃᐃᐃ (Musqueam), ᐃᐃᐃᐃᐃᐃᐃᐃ (Squamish), and ᐃᐃᐃᐃᐃᐃᐃᐃ (Tsleil-Waututh) (MST) Partnership and Canada Lands Company (CLC). The boards include and project and process update, outcomes of recent engagement with Host Nations community members, and an outline of the next steps in the planning program. Please refer to the table of contents below for information on the respective sections.

City of Vancouver Boards

- About the Site & Jericho Lands Planning Program
- Jericho Lands Policy Statement
- Planning Process Update
- Draft Guiding Principles & Emerging Ideas
- Phase 3 Engagement Highlights
- Recent Council Decisions
- What's Next?

Landowners Boards

- Welcome/ᐃᐃᐃᐃᐃᐃᐃᐃ/ᐃᐃᐃᐃᐃᐃᐃᐃ
- A Historic Partnership
- Cultural Significance of ᐃᐃᐃᐃᐃᐃᐃᐃ/ᐃᐃᐃᐃᐃᐃᐃᐃ
- Engagement with MST Nations' Community Members
- What we've heard from MST Nations' Community Members
- Embedding MST Cultural Values and Ways of Being
- Celebrating the MST Partnership
- Living with Nature
- Stewards of Trees and Canopy
- A Place of Arrival
- Spirit of the Longhouse
- Honouring the Ridge
- Water as a Life Giver

ABOUT THE SITE & JERICHO LANDS PLANNING PROGRAM

ᑭᐃᐃᐃᐃᐃᐃᐃ/ᐃᐃᐃᐃᐃᐃᐃᐃᐃ/the Jericho Lands lie within the unceded traditional territories of the xʷməθkʷəy̍əm (Musqueam) Indian Band, Sk̓wx̓wú7mesh (Squamish) Nation, and səliłwətał (Tsleil-Waututh) Nation. For millennia, the site was part of the lands and waters on which the Nations hunted, gathered and followed their cultural customs.

ᑭᐃᐃᐃᐃᐃᐃᐃ/ᐃᐃᐃᐃᐃᐃᐃᐃᐃ was the name of an important village that was once located close to the Salish Sea and what we now know as Jericho Beach Park, and Jericho and Locarno Beaches. It was connected to other villages and campsites by a network of trails radiating across the Host Nations territories.

Today, ᑭᐃᐃᐃᐃᐃᐃᐃ/ᐃᐃᐃᐃᐃᐃᐃᐃᐃ/the Jericho Lands refers to a 36 hectare (90 acres) site, which is bound by West 4th Avenue to the north, Highbury Street to the east, West 8th Avenue to the south, and West Point Grey Park (Trimble Park) and Queen Mary Elementary School to the west.

The site is owned by a joint venture partnership between the xʷməθkʷəy̍əm (Musqueam), Sk̓wx̓wú7mesh (Squamish), and səliłwətał (Tsleil-Waututh) (MST) Partnership, and Canada Lands Company (CLC).

In March 2019, at the request of the landowners, the City of Vancouver launched the Jericho Lands planning program. It is a comprehensive planning process which will help create a policy statement to guide future redevelopment of the lands.

Redevelopment of the site is an opportunity for the Host Nations to express their deep connection to the land while bringing forward new opportunities for prosperity for future generations.



(ᑭᐃᐃᐃᐃᐃᐃᐃ / ᐃᐃᐃᐃᐃᐃᐃᐃᐃᐃ / Jericho Lands in context of city of Vancouver)

How do I say it?

Pronounced **“Ee-yal-mugh”**:
 ᑭᐃᐃᐃᐃᐃᐃᐃ is the place name in the ᐃᐃᐃᐃᐃᐃᐃᐃᐃ language spoken by the Musqueam and Tsleil-Waututh peoples.

Pronounced **“I-yal-mugh”**:
 ᐃᐃᐃᐃᐃᐃᐃᐃᐃ is the place name in the Sk̓wx̓wú7mesh language spoken by the Squamish people.

ᑭᓃᓄᓐᓄᓐ/ᓄᓄᓐᓄᓐ/Jericho Lands Policy Statement

The ᑭᓃᓄᓐᓄᓐ/ᓄᓄᓐᓄᓐ/Jericho Lands Policy Statement is being created in consultation with the landowners, Host Nations members, Vancouver community members, and other stakeholders before being presented to City Council for consideration. If adopted, it will inform future rezoning and redevelopment of the site. Establishing a preferred site concept is a key step in the process of creating the site’s policy statement. We anticipate seeking feedback on a preferred concept from Host Nation members, city residents, and stakeholders in summer 2023.

What is a Policy Statement?

A policy statement is a guiding document that establishes principles, objectives, and policies relating to a range of topics. These include:

- **Reconciliation**
- **Mix of land uses**
- **Density, building types & heights**
- **Mobility**
- **Sustainability & infrastructure**
- **Ecology, parks & open space**
- **Community amenities**
- **Development phasing**



Who is involved in creating the Policy Statement?



Canada Lands Company and MST Partnership

- Represent Host Nations priorities and aspirations.
- Act as proponents for the redevelopment of the site.
- Lead engagement with Host Nation community members to ensure Indigenous values are embedded within the redevelopment.
- Generate and refine conceptual site plan options (in consultation with City staff) balancing objectives of all parties.
- Work with the City to inform and engage Vancouver residents of the planning process.

City of Vancouver

- Coordinate the planning program.
- Provide technical guidance to the proponent team as they develop a preferred site plan.
- Design and implement an engagement process with input from the community.
- Facilitate discussion and coordinate feedback at open houses and meetings regarding conceptual site plans and draft policies.
- Ensure City policies and directions, landowner’s objectives, and community priorities are reflected in the policy statement.
- Draft a policy statement for Council consideration.
- Evaluate future rezoning applications based on the Council approved policy statement.

MST and Vancouver Community Members

- Identify issues, priorities and ideas to inform the engagement process, guiding principles and redevelopment options.
- Provide input throughout the process.
- Participate in public workshops and events.
- Review and provide feedback on guiding principles and redevelopment options.
- Review and provide feedback on the Jericho Lands planning program.

PLANNING PROCESS UPDATE

In October 2021, the ᑭᐃᐃᐃᐃᐃᐃᐃ/ᐃᐃᐃᐃᐃᐃᐃᐃ/Jericho Lands planning program introduced two conceptual site plan options which were shaped by the Council endorsed draft Guiding Principles and Emerging Site Planning Ideas. Through extensive community engagement, we received a range of feedback summarized in our Phase 3 Engagement Summary report ([link here](#)).

Since then, the joint venture partnership between the the ᐃᐃᐃᐃᐃᐃᐃᐃᐃ (Musqueam), ᐃᐃᐃᐃᐃᐃᐃᐃᐃ (Squamish), and ᐃᐃᐃᐃᐃᐃᐃᐃᐃ (Tsleil-Waututh) Nation (MST Partnership) and Canada Lands Company (CLC) have been focused on the Heather Lands project ([link here](#)) which received rezoning approval from Vancouver City Council in May 2022. As a result of the landowners' shifted focus over the past year the Jericho project was inactive for much of 2022.

In fall 2022, the City project team re-engaged with the joint venture partnership to analyse the feedback from public engagement to date, carry out further technical studies, and begin to work towards a conceptual site plan that would better reflect Indigenous design values and the importance of the site to the Nations. The landowners also conducted additional engagement with Host Nations communities. Looking ahead, we intend to schedule public engagement opportunities in summer 2023 to share a preferred site concept and seek your feedback on it.

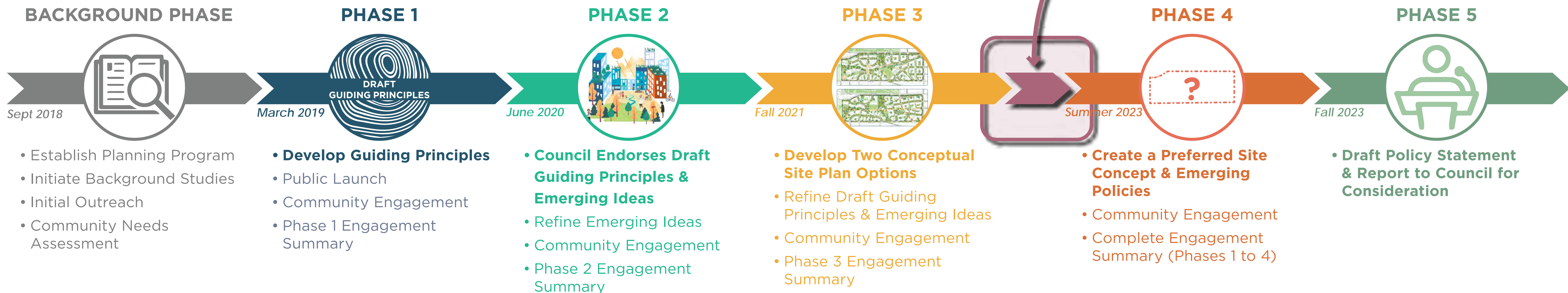


WE ARE HERE

PHASE 3.5

- Process and timing update
- Share output from Host Nations engagement, including MST Planning and Design Framework for the Jericho Lands
- Inspire Jericho Talk Event

NEW PROCESS STEP



DRAFT GUIDING PRINCIPLES AND EMERGING IDEAS

Draft Guiding Principles

The draft Guiding Principles were developed during Phase 2 of the planning program and are based on community feedback, City objectives and policies, the landowners' aspirations, and stakeholder priorities. In summer 2020, City staff sought feedback on them and updates were made to reflect the comments received.

The draft Guiding Principles were endorsed by City Council in June 2021. They will remain in draft form until ᑲᓃᓐᓂᓐᓂᓐ/ᓂᓐᓂᓐᓂᓐ/the Jericho Lands Policy Statement is completed. This allows for further refinement as new information is learned and feedback received.

The final version of the Guiding Principles will be incorporated into the future policy statement and are intended to provide high-level direction for future development on the site.

1. Reflect and respect the past, present and future legacies of the Musqueam, Squamish and Tsleil-Waututh
2. Respect the land
3. Welcome all cultures
4. Cohesive community
5. Connect within and beyond
6. A place to call home
7. Design for the future



Emerging Site Planning Ideas

City staff, in collaboration with the joint venture partnership, developed a series of Emerging Site Planning Ideas during Phase 2 of the planning process. Similar to the draft Guiding Principles, they were developed using feedback from Nation and community members, City objectives and policies, the landowners' aspirations, and stakeholder priorities.

The Emerging Ideas are grouped in four themes: Natural Systems & Open Space, Connections & Mobility, Inclusive Neighbourhood, and Sustainability & Resilience. In April 2021, we sought your feedback on the Emerging Ideas through a series of surveys and in June 2021, they were endorsed, along with the draft Guiding Principles, by City Council.

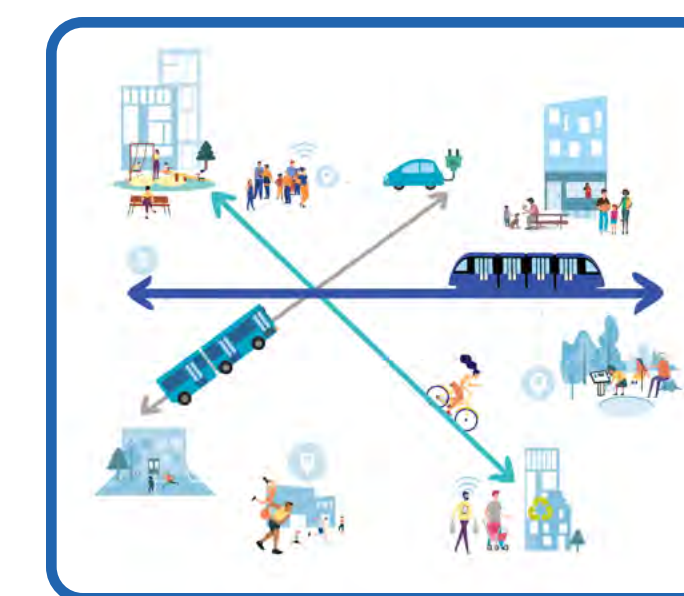
The Emerging Ideas look to the future of what ᑲᓃᓐᓂᓐᓂᓐ/ᓂᓐᓂᓐᓂᓐ/the Jericho Lands can become, while embedding Indigenous values to showcase the historic and cultural importance of these lands to the Host Nations. They are intended to provide input into the development of a preferred site concept.

'Embedding Indigenous Values' means that the ᑲᓃᓐᓂᓐᓂᓐ/ᓂᓐᓂᓐᓂᓐ/Jericho Lands will tangibly express xʷməθkʷəy̓əm (Musqueam), Sḵw̓x̓ wú7mesh (Squamish), and səliwətał (Tsleil-Waututh) culture and identity in the planning and design of all aspects of the site. Embedding Indigenous values defines the fundamental approach to the project.

Emerging Ideas Themes



Natural Systems
 & Open Space



Connections
 & Mobility



Inclusive
 Neighbourhood



Sustainability
 & Resilience

PHASE 3 ENGAGEMENT

What We Heard

During Phase 3 engagement, we provided opportunities for the public to share what they thought about the two conceptual site plan options.

Below is a high-level summary of feedback we received, organized according to the main themes that emerged from the engagement period.



Building Types and Heights

- There is some support for providing additional housing options; however, there is general concern for taller building forms.
- Desire for buildings to better repond to the surrounding neighbourhood context.
- Desire to see climate resilient design, and sustainable building methods and materials.

Community Centre and Amenities

- Strong support for the open space network and central location of community centre.
- Need for a school on site to serve families with children.
- Support for healthcare amenities and emergency services on site.
- Need for more childcare facilities.

Housing Options

- Desire to see social, affordable and rental housing as a significant portion of the housing mix.
- A desire for housing options for students, seniors, and families.

Parks, Open Space and Connectivity

- Support for the location and variety of the parks and open spaces.
- Parks and open spaces were generally thought to provide good connectivity within the site, and to surrounding amenities.
- Support for a walking, cycling and rolling friendly site, with a car-light approach.

Transportation

- Preference for no north-south vehicle access across the site.
- Support for walking, cycling and rolling friendly site with a car-light approach.
- Ensure that pedestrians and cyclists have separated and safe travel experiences.

Phase 3 Public Engagement by the Numbers:

Community Newsletter (Fall 2021)



~12,000

copies distributed to West Point Grey and Kitsilano residents, and Host Nation members.

289 downloads of a digital copy from the project web page.

Local Stakeholder Meetings



40+

participants across 5 local stakeholder meetings.

Conceptual Site Plan Options Survey



427

total responses to the survey.

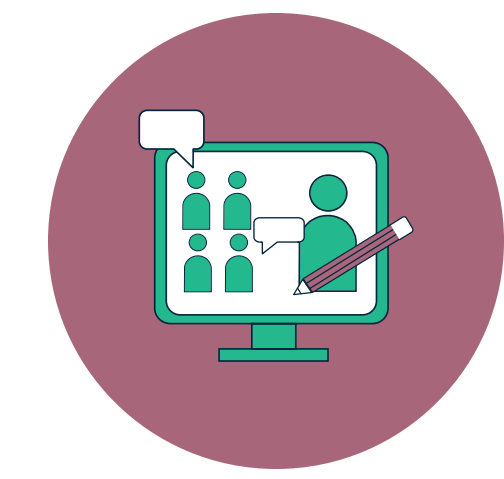
Jericho Lands Email Notification List



1,500+

people signed up to receive project notifications to date.

Virtual Phase 3 Kick-off Event

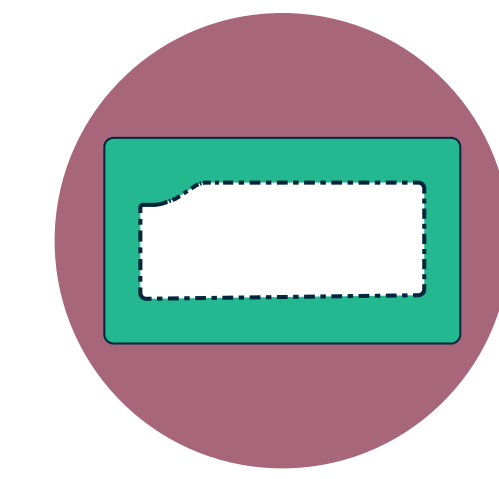


227

participants attended the Virtual Phase 3 Kick-Off event.

774 online views of the recorded session to date.

Self-Guided Tour (Summer 2021)



City staff, in collaboration with the landowners, invited the public to take a self-guided tour of ᑭᑭᑭᑭᑭᑭᑭᑭ / ᑭᑭᑭᑭᑭᑭᑭᑭᑭ / the Jericho Lands to learn more about the Emerging Ideas, endorsed by Council in June 2021.

Talk to a Team Member Meetings



175+

meetings with the public conducted virtually, by phone, and in-person at our remote office location.



PHASE 3 PUBLIC ENGAGEMENT SUMMARY

To read more about what we heard during Phase 3, read the **Engagement Summary** ([link here](#)).

RECENT COUNCIL DECISIONS

Since our last phase of engagement, a number of key policy decisions have been made at both the city and regional level. These have included: **the City’s adoption of the UNDRIP Strategy, approval of the Vancouver Plan, endorsement of a SkyTrain extension from Arbutus to UBC and future station on the Jericho Lands, and TransLink’s release of the Transport 2050: 10-Year Priorities.**

UNDRIP Strategy

In October 2022, Vancouver City Council adopted the United Nations Declaration on the Rights of Indigenous People (UNDRIP) Strategy for Vancouver. This is the most comprehensive international instrument on the rights of Indigenous Peoples and is a framework for reconciliation to uphold and protect Indigenous Peoples’ rights and their enjoyment of those rights.

As part of our UNDRIP Strategy, the City’s task force identified specific calls-to-action under the four themes of the BC Declaration on the Rights of Indigenous Peoples Act (Declaration Act):

- Social, cultural, and economic well-being
- Ending Indigenous-specific racism and discrimination
- Self-determination and inherent right of self-government
- Rights and title of Indigenous Peoples

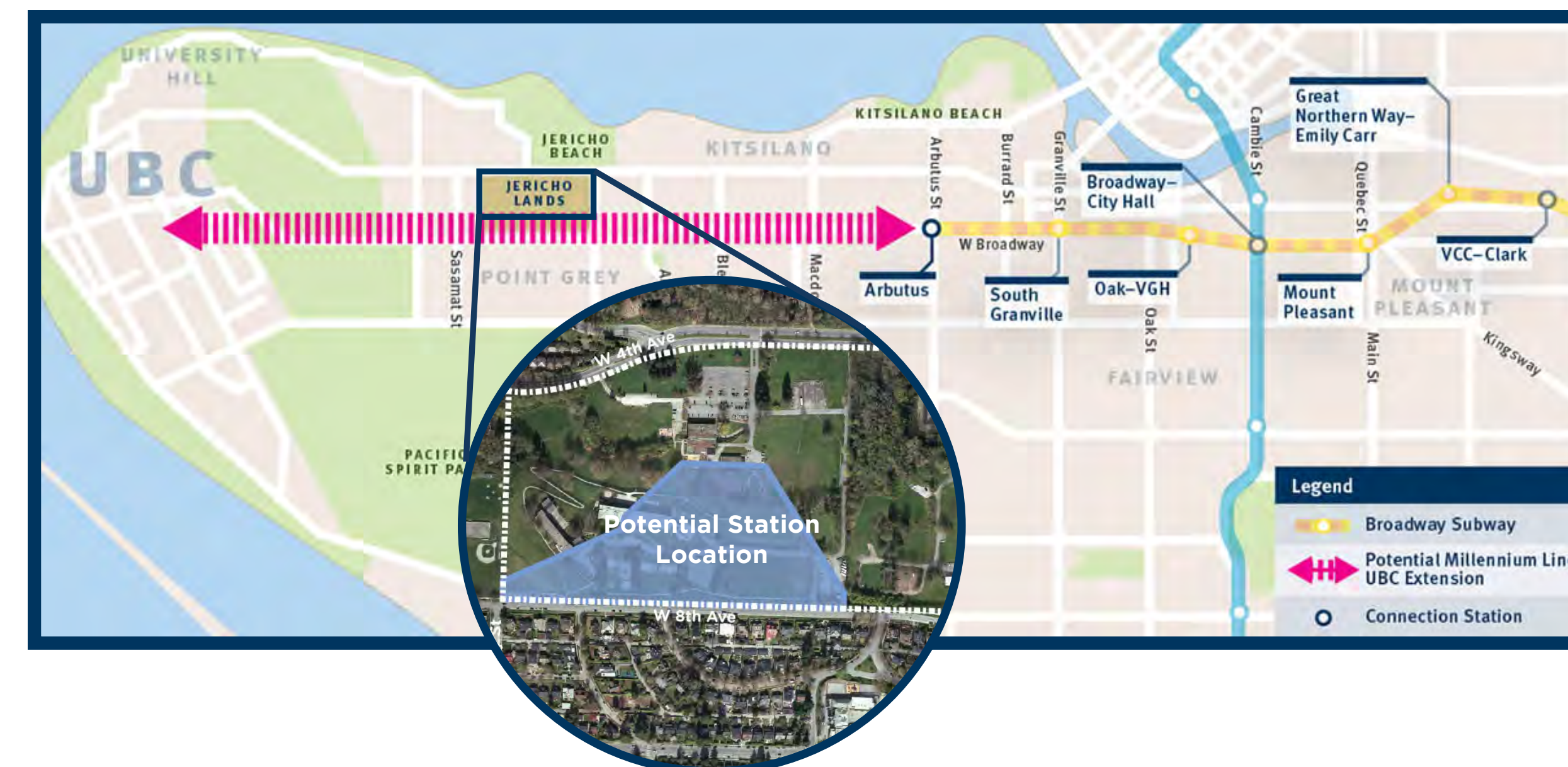
The ᑲᓃᓐᓴᓄᓐᓴᓄᓐ/Jericho Lands planning program will align with, and advance, the UNDRIP Strategy’s calls-to-action. To read more details, please review the **Council approved report (link here)**.

Transport 2050 and Millennium Line UBC Extension (SkyTrain)

In January 2022, the Mayors’ Council on Regional Transportation approved Transport 2050, TransLink’s new Regional Transportation Strategy (RTS) for Metro Vancouver that will guide transportation decisions for the next three decades. The RTS outlines over 100 actions or strategies to make transportation options more convenient, reliable, affordable, safe, comfortable, and environmentally sustainable. The Millennium Line UBC Extension is identified as one of the RTS’ 10-year priorities. To learn more, please review approved **Transport 2050 Strategy (link here)** and the **10-Year Priorities report (link here)**.

In March 2022, City Council endorsed the proposed alignment of the Millennium Line UBC Extension, including a station within ᑲᓃᓐᓴᓄᓐᓴᓄᓐ/the Jericho Lands as well as stations at Alma and MacDonald Streets. To read more details, please review the **Council approved report (link here)**.

Millennium Line UBC Extension:



Vancouver Plan

Approved by City Council in July 2022, the Vancouver Plan is a visionary long-range land use strategy to create a more livable, affordable, and sustainable city for everyone. It guides the long-term growth of the city in an intentional way, clarifying where growth and change will occur over the next 30 years.

The Plan’s land use strategy identifies the area around ᑲᓃᓐᓴᓄᓐᓴᓄᓐ/the Jericho Lands as a Rapid Transit Area, which will accommodate a wider range of housing options (including rental and social housing) and employment uses over time. ᑲᓃᓐᓴᓄᓐᓴᓄᓐ/the Jericho Lands are identified as a major project site. For these sites, a site specific policy statement will provide direction on the nature and scale of change, including how housing, job space, services, amenities, infrastructure, and parks and open spaces will be provided.

To read more details, please review the **Vancouver Plan website (link here)**.

Vancouver Plan Survey

- 78%** agreed that Vancouver should have a range of housing options in all neighbourhoods.
- 84%** indicated high levels of support for adding new housing choices around community assets (such as parks and community centres)

The Broadway Subway Project, a Millennium Line extension to Arbutus Street, is under construction and is anticipated to begin operations in early 2026. TransLink’s RTS Transport 2050: 10-Year Priorities identifies the extension of the Millennium Line to UBC in years 6 to 10.

Preliminary work by TransLink has identified areas within the Jericho Lands where a station is technically feasible and will inform the Jericho planning process. Further study and analysis will be needed prior to finalizing the station location on the Jericho Lands.

WHAT'S NEXT

Share Your Thoughts and Stay Involved

Share your feedback and stay up to date with ᑭᓐᓐᓐᓐᓐᓐ/ᓐᓐᓐᓐᓐᓐ/Jericho Lands planning program by visiting our project website at shapeyourcity.ca/jericho-lands.

- ✓ Learn more about the Jericho Lands planning process, **access all the project documents**, and watch past events
- ✓ Leave a comment and/or question for City staff under the 'Ask a Question' tab
- ✓ Join our email list by entering your details under 'Get updates', and receive project updates and notifications of future public engagement events
- ✓ Write to the project team at: jericholands@vancouver.ca

Phase 4: Preferred Site Concept and Emerging Policies

The ᑭᓐᓐᓐᓐᓐᓐ/ᓐᓐᓐᓐᓐᓐ/Jericho Lands planning team expects to launch Phase 4 engagement in summer 2023. During this phase, the public will have the opportunity to share feedback on the preferred site concept and emerging policies. Please monitor the project website for opportunities to participate in the process.

Join us for an Inspire Jericho Talk

Please join the MST Partnership, Canada Lands Company, and the City of Vancouver as we co-host an Inspire Jericho Talk. **Learn more about how the Indigenous cultural values will help inform the future of the site.**

- **Speakers:**
 - **Charleen Grant:** ᓐᓐᓐᓐᓐᓐᓐᓐᓐᓐᓐᓐᓐ (Musqueam)
 - **Sxelaltenaat-Adrienne Charlie & Ts'kanchtn-Calvin Charlie-Dawson:** ᓐᓐᓐᓐᓐᓐᓐᓐᓐᓐᓐᓐᓐ (Squamish)
 - **Whonoak-Dennis Thomas & William George Thomas:** ᓐᓐᓐᓐᓐᓐᓐᓐᓐᓐᓐᓐᓐ (Tsleil-Waututh)
- **Date:** Thursday, April 13, 2023
- **Time:** 7:00PM
- **Location:** UBC Robson Square (800 Robson St.)

Registration opens March 6 (here)



Planning Program Timeline





Welcome ʔə́m̓i ce:p kwət̓xw̓iləm tl'ik̓n̓úmut

The materials on the following pages have been developed by Canada Lands Company and a partnership of the x̓m̓əθk̓əy̓əm (Musqueam), Sk̓wx̓w̓ú7mesh (Squamish), and səliwətał (Tsleil-Waututh) Nations (known through this project as CLG-MST).

CLG-MST are excited to be reconnecting with you to share information about planning and design for the future of ʔə́alm̓əx̓w̓/Iy̓álm̓əx̓w̓/Jericho Lands.

Over the following pages, you'll find information about:

- The cultural significance of ʔə́alm̓əx̓w̓/Iy̓álm̓əx̓w̓/Jericho Lands
- Engagement with MST Nations' Community Members and how CLG-MST are honouring their input
- How the stories, ideas, wisdom and aspirations from MST Knowledge Keepers, Elders and communities set the foundation for planning and design of ʔə́alm̓əx̓w̓/Iy̓álm̓əx̓w̓/Jericho Lands



A Historic Partnership

WORKING TOGETHER

Canada Lands Company (CLC), together with a partnership of the xʷməθkʷəy̓əm (Musqueam), Sk̓w̓x̓wú7mesh (Squamish), and səliłwətał (Tsleil-Waututh) Nations, entered into a historic joint venture partnership, the first of its kind in Canada.

CLC-MST owns two properties: the Heather Lands and 52 acres at ʔəyálməxʷ/Iyálməxw/Jericho Lands.

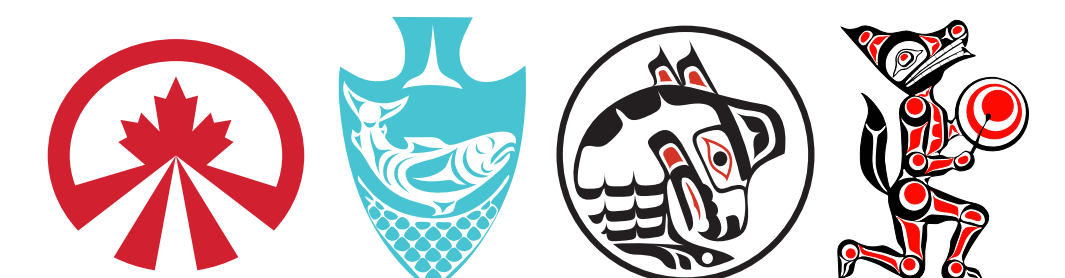


ʔəyálməxʷ/Iyálməxw/Jericho Lands



Heather Lands

ʔəyálməxʷ/Iyálməxw
INSPIRE JERICHO





Tidal flats of Jericho Beach taken in 1890 by Bailey Brothers.
Image courtesy of City of Vancouver Archives: Be P41.

Cultural Significance of ʔəyálməx^w/Iyálmexw (Jericho Lands)

When we think of the area we call ʔəyálməx^w/Iyálmexw² (now called Jericho), it reminds us of our deep connections to these territories, our relations, and our responsibilities to both. These places are essential reminders of who we are and where we come from.

ʔəyálməx^w/Iyálmexw is part of an interconnected network of cultural sites that exist throughout x^wməθk^wəyám (Musqueam), Sḵwḵwú7mesh (Squamish), and səilwətał (Tsleil-Waututh) territories. For thousands of years, these have been the lands and waters on which we have resided, worked, and followed our cultural customs. These territories offered our ancestors a life of abundance with smelt, coho and chum from the creeks and sea, and deer and elk from the uplands. It was a place to gather materials for homes and our families. Today, these lands offer us, the descendants of those original peoples, a new form of abundance.

ʔəyálməx^w/Iyálmexw was connected to other villages and campsites by a network of trails radiating across our territories. In our oral history, it was from there that an ancestor to many Musqueam, Squamish, and Tsleil-Waututh families named qiyəplənəx^w / Ƙiyapelánexw gathered warriors to defend against northern people who would raid our various communities. It was also a site of many large communal cedar plank longhouses that measured hundreds of feet in length. Here, thousands of guests from the Fraser Valley, Vancouver Island, up the coast, and Puget Sound would be hosted at gatherings organized by the residents of ʔəyálməx^w/Iyálmexw.

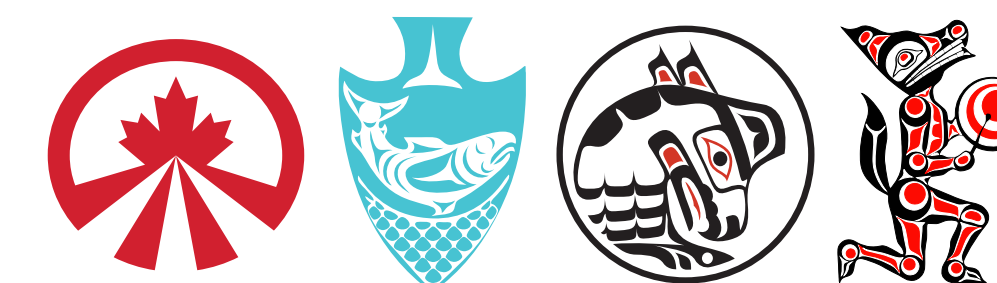
The redevelopment of the Jericho Lands is a generational opportunity for us to reaffirm these relationships—to honour our heritage, to rebuild our communities, and to celebrate our unique identity. This building of a new ʔəyálməx^w/Iyálmexw (Jericho) is to remind ourselves, and educate all local residents, about the essential connections between our three Nations, and our ongoing connection to these places we have called home for so many generations.

¹ ʔəyálməx^w is the place name in the həńqəmińəń language spoken by the Musqueam and Tsleil-Waututh peoples

² Iyálmexw is the place name in the Sḵwḵwú7mesh language spoken by the Squamish people

ʔəyálməx^w/Iyálmexw

INSPIRE JERICHO



Engagement with MST Nations' Community Members

Since the launch of the Inspire Jericho process in early 2019, CLG-MST has been inspired by the input and knowledge shared at many events by MST Nations' Community Members.

In 2019, CLG-MST was pleased to welcome cultural liaisons from each of the MST Nations as part of the project team. The cultural liaisons are providing advice to the team throughout the planning process. Their contributions, along with those from the CLG-MST Joint Venture Management Committee, MST Elders, Knowledge Keepers, and Community Members have and will continue to inform planning and development of ʔəyálməxʷ/Iyálməxw/Jericho Lands.

The project team has worked closely with the cultural liaisons to engage with community members at a variety of sessions. Audiences have included Elders and Knowledge Keepers, Youth (from K-12) and a broad cross-section of community members. These sessions have provided an opportunity to listen to and learn from MST Nations' Community Members about stories, cultures, and hopes for the future neighbourhood at ʔəyálməxʷ/Iyálməxw/Jericho Lands.



Clockwise from top left: MST Nations' Community Member celebration, an engagement event in Musqueam, a community gathering in Tsleil-Waututh, and a Squamish Elders' luncheon in North Vancouver

What we've heard from MST Nations' Community Members

Through engagement with MST Nations' Community Members, some of the themes that have been brought up most consistently include:

- Remembering the history of ʔəyálməxʷ/Iyálməxw and celebrating those who lived there through sharing art and stories
- Integrating MST culture throughout ʔəyálməxʷ/Iyálməxw/Jericho Lands, including through building design, artwork, signage, street and place names, and welcome posts
- Incorporating nature and natural elements into the design and creating outdoor spaces for people to visit and gather, including lookouts on the ridge, trail networks, community gardens with food and traditional plants, and play areas for sport and families
- Representing the spirit of the longhouse through building design and creating places for community to come together
- Prioritizing climate resiliency in building design and utilizing sustainable building practices
- Celebrating the opportunities that MST working together would bring for the economic, training, and cultural future of Community Members



Clockwise from top left: an engagement event in Musqueam, a Squamish Elders' luncheon in the Squamish Valley, MST Nations' Community Member celebration, and a community gathering in Tsleil-Waututh

Embedding MST Cultural Values and Ways of Being

Knowledge, stories and input that have been shared by MST Nations' Community Members are informing the planning and design of ʔəyalməxʷ/Iyálmexw/ Jericho Lands.

The MST Planning and Design Framework for ʔəyalməxʷ/Iyálmexw/ Jericho Lands includes three Cultural Design Inspirations that provide the foundation for planning a new community at ʔəyalməxʷ/Iyálmexw/ Jericho Lands. Seven Cultural Site Planning Elements expand on these, and are further described through 14 Cultural Design Principles which speak to how MST culture will be imprinted in the planning and design of the future neighbourhood at ʔəyalməxʷ/Iyálmexw/ Jericho Lands.

Many of these Inspirations, Planning Elements and Design Principles are interconnected and overlap with each other.

Over the following pages, you will find descriptions and illustrations of the Cultural Site Planning Elements, reflecting input received from MST Nations' Community Members. Below those, you will find information about the Cultural Design Principles, including illustrations and schematics of how they could be embedded at ʔəyalməxʷ/Iyálmexw/ Jericho Lands



Celebrating the MST Partnership

The x^wməθk^wəy^əm (Musqueam), Sk^wx^wú7mesh (Squamish), and səliwətał (Tsleil-Waututh) Nations paddle together. We are each different, but we are united in our shared history. We have a collective and collaborative culture, with strong kinship ties. Together, we cannot be stopped.

ʔəyalməx^w/Iyálmexw/Jericho Lands will honour our distinct yet blended cultures, and will show the world how we are a people of one heart. At ʔəyalməx^w/Iyálmexw/Jericho Lands, we will take our rightful place in our traditional territories.

DESIGN PRINCIPLES

Build for future generations

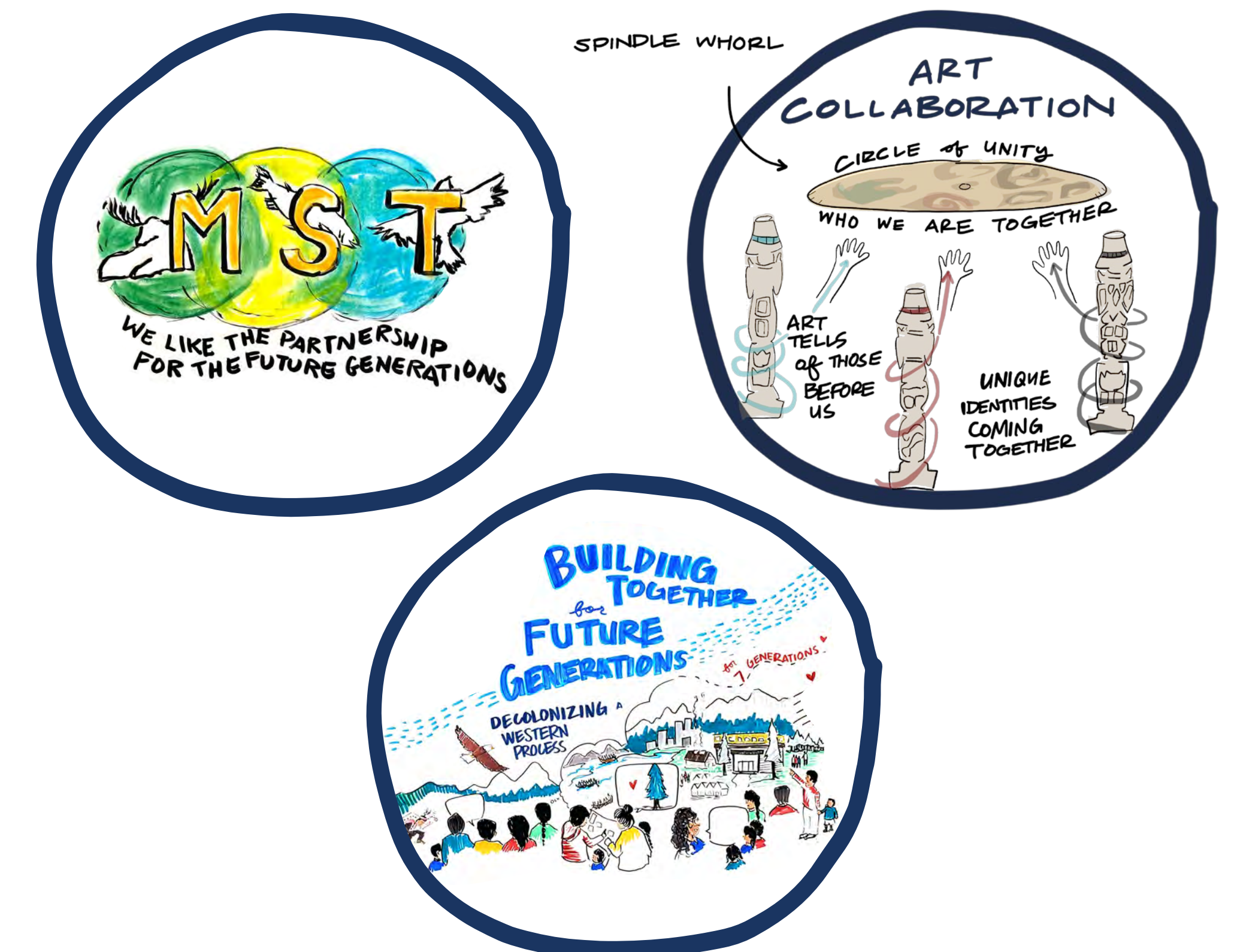
Example applications:

- Honour MST history, including how this land was taken and returned, and celebrate ancestors and Elders through architecture, artwork, and place names
- Represent həńqəmińəń and Sk^wx^wú7mesh languages in naming and signage
- Show that the MST are a modern, thriving people through contemporary cultural expressions

Paddle together: spirit of community

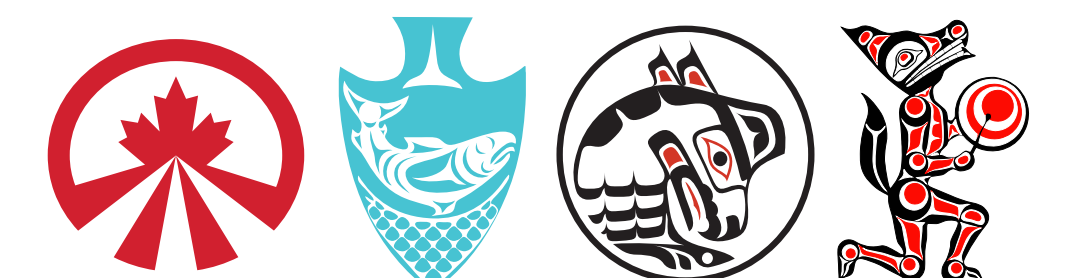
Example applications:

- Evoke the spirit of the longhouse, celebrating the joy and feeling of community that MST people experience living, celebrating, and thriving together
- Create spaces for the three Nations to build kinship and celebrate, create, play, trade, sell, and feast, honouring Elders and youth



ʔəyalməx^w/Iyálmexw

INSPIRE JERICHO



Living with Nature

The trees, water, and mountains have taken care of our people for thousands of years. Reciprocity and regenerative ecology—where the land is replenished after it is harvested or disturbed—is a part of our Indigenous laws. We are generational thinkers and we are connected to the land.

Nature has always been held in a place of honour, and will continue to be at ʔəyalməx^w/Iyálmexw/Jericho Lands.

DESIGN PRINCIPLES

Immerse in nature

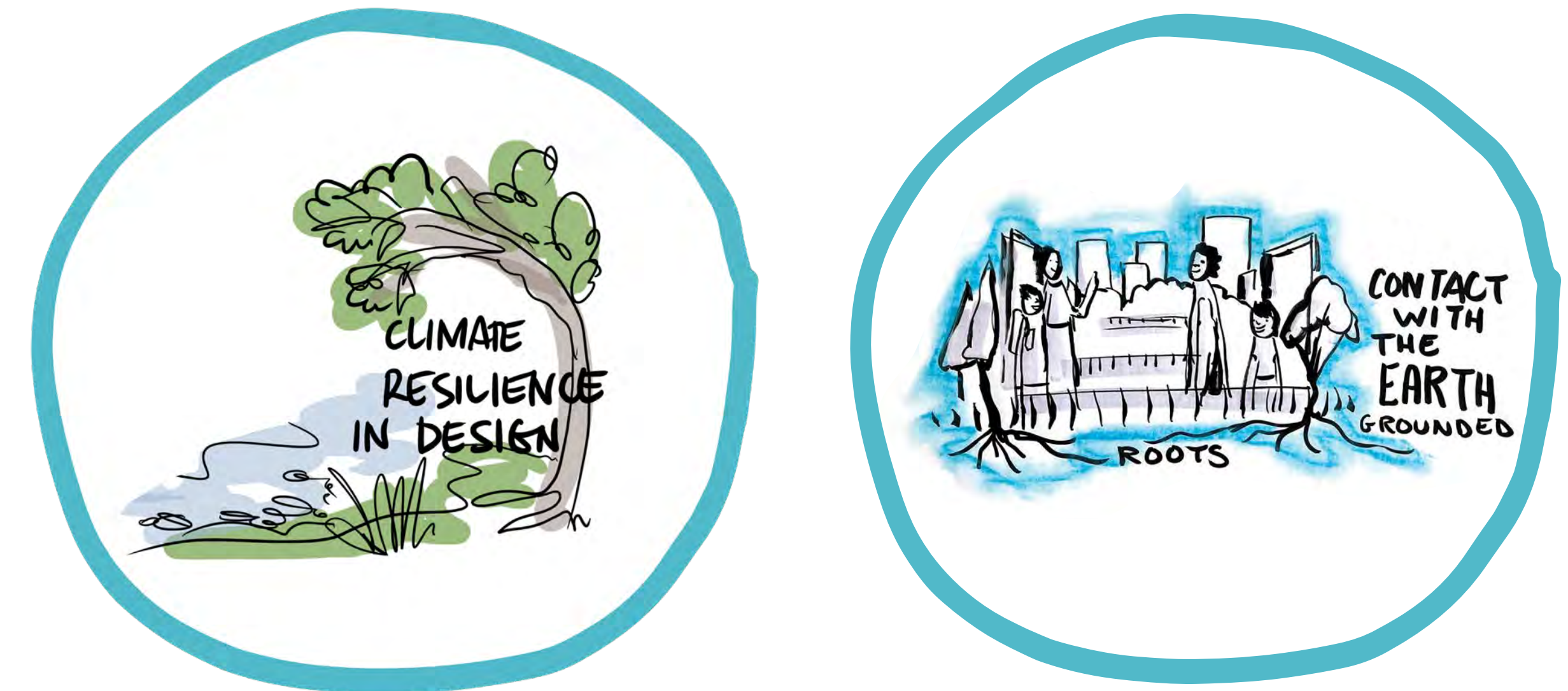
Example applications:

- Design spaces to enable people to be immersed in the natural world and the seasons, including seeing, hearing, smelling, and touching water
- Embed water, ecology, forest, wetland, and meadow throughout the neighbourhood

Be climate responsive

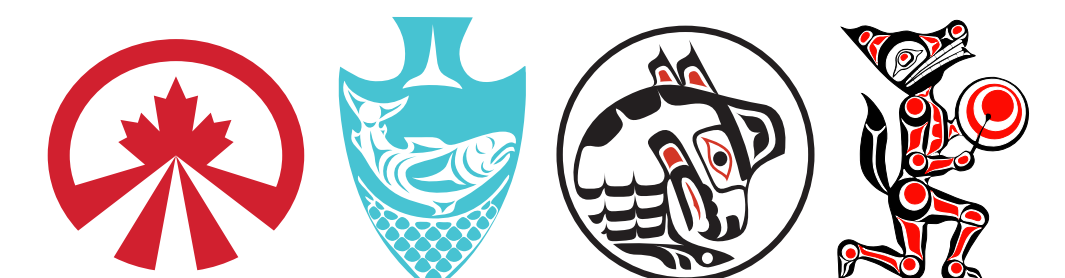
Example applications:

- Act aggressively to prevent climate change through orientation of buildings and supporting low carbon energy approaches
- Incorporate places with shade, places with rain cover, places for warmth, and places for cooling, to prepare for the effects of climate change



ʔəyalməx^w/Iyálmexw

INSPIRE JERICHO



Stewards of Trees and Canopy

Important parts of our culture are rooted in trees. We use cedar and other traditional trees for canoes, longhouses, welcome figures, clothing, baskets, medicines, artwork, and ceremony. Trees also provide homes to other creatures, our relations.

Significant trees and other plants will be protected and restored at ʔəyalməxʷ/Iyálmexw/Jericho Lands.

DESIGN PRINCIPLES

Focus on wood and other natural materials

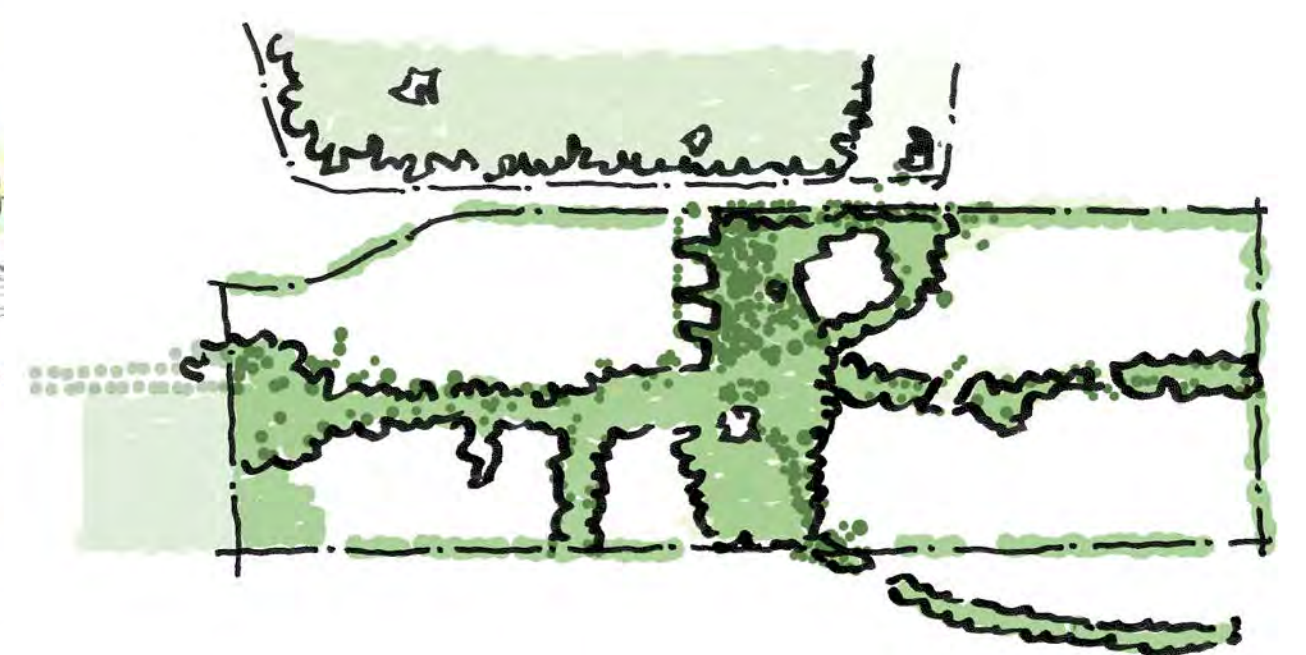
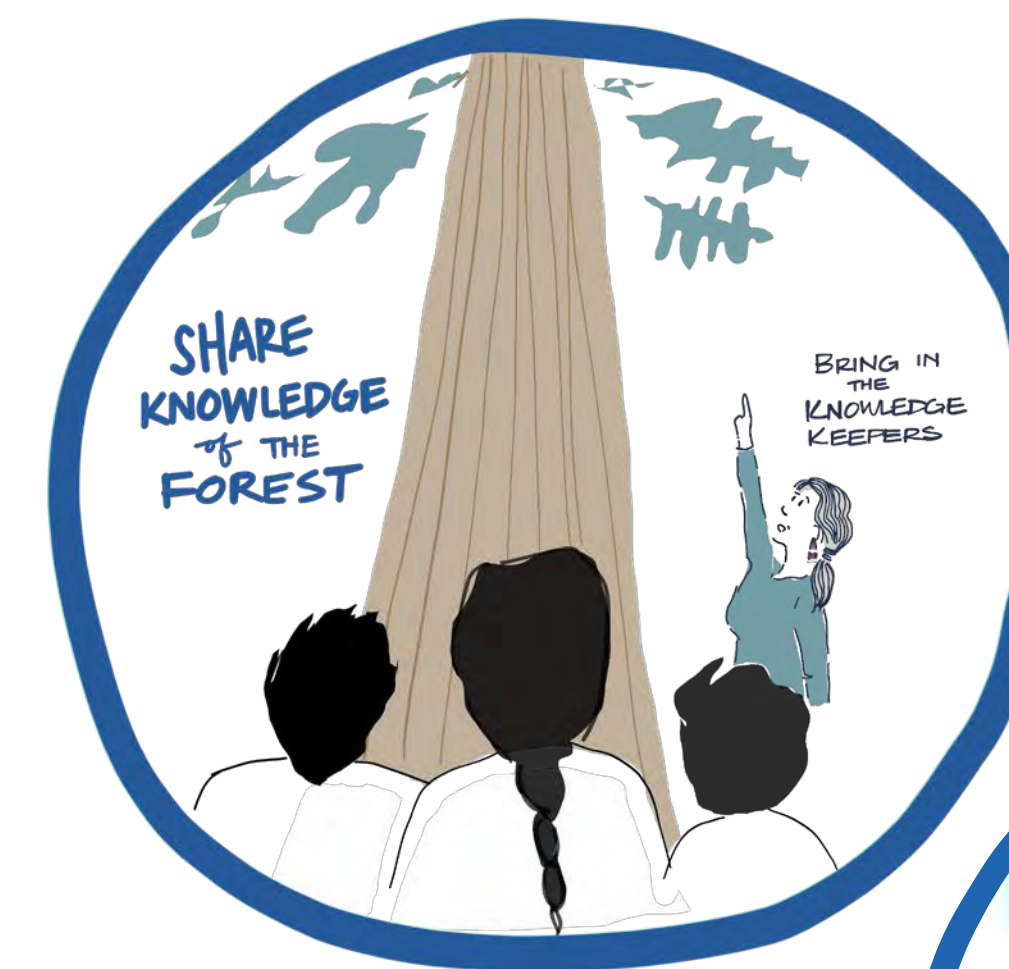
Example applications:

- Use cedar and other trees for building, carving, weaving, and other traditional practices that restore people's relationships with their culture
- Use the language and tools of nature through natural materials and textures

Nourish and heal with plants and trees

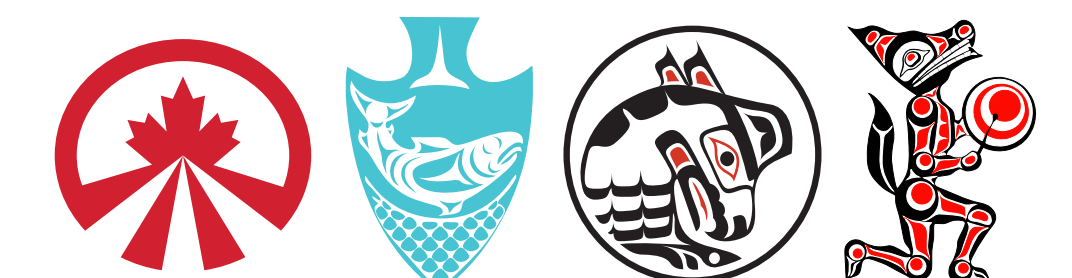
Example applications:

- Share knowledge about traditional foods and medicines and use plants to feed and heal people
- Provide access to traditional medicines and foods such as berries and tree fruits through shared gardens



ʔəyalməxʷ/Iyálmexw

INSPIREJERICHO



A Place of Arrival

ʔəyálməx^w/Iyálməxw/Jericho Lands has always been a place of arrival and kinship. Before colonization, we welcomed people here for trade, bartering, and gathering. Welcome figures stood at places of arrival, while house posts at the entrances of homes told visitors which families lived here.

Even though our ancestors were forced to leave, ʔəyálməx^w/Iyálməxw/Jericho Lands will be a place that welcomes all. We are resilient. The neighbourhood will let people know that this is our land, and we are here to share it with others.



DESIGN PRINCIPLES

Animate and welcome

Example applications:

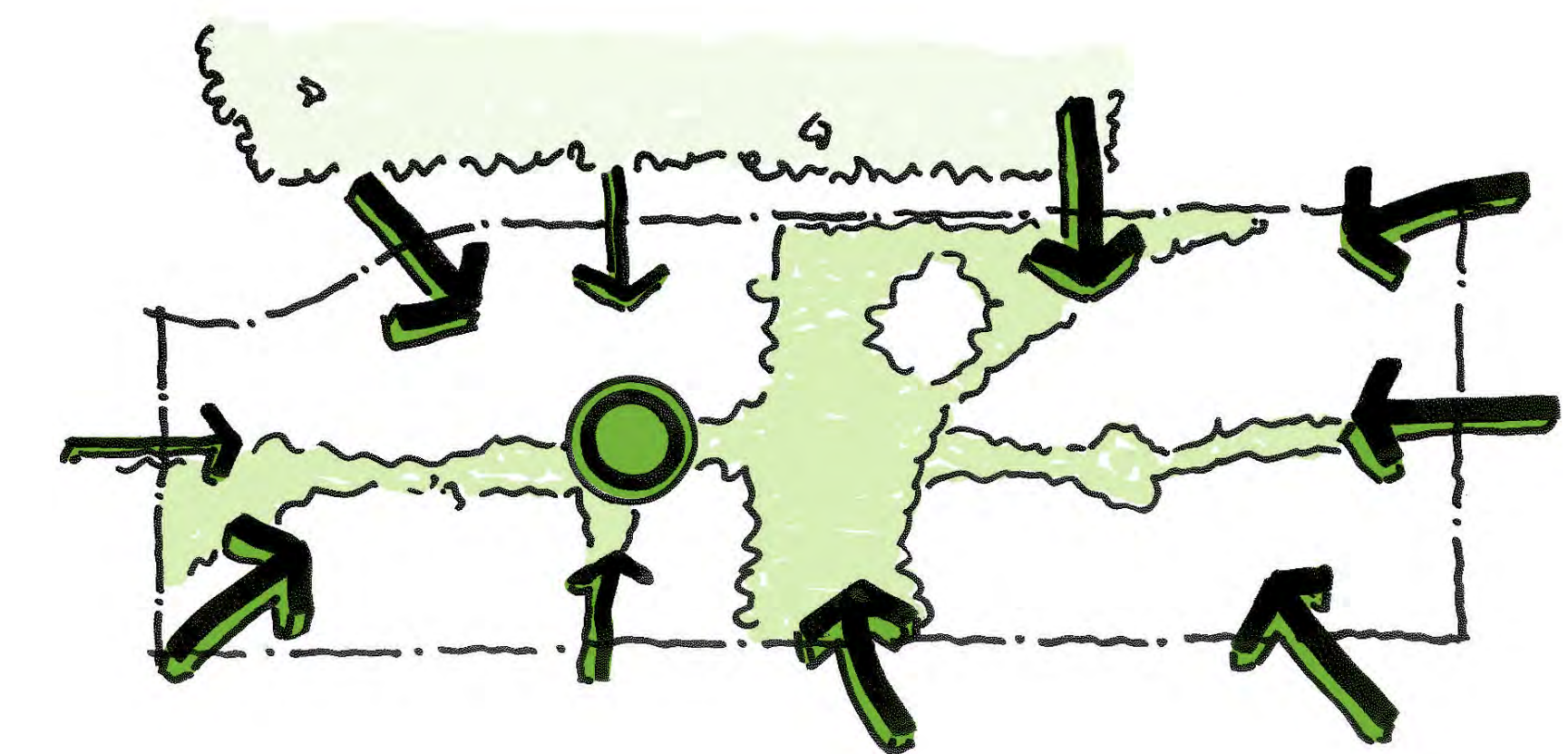
- Share X^wməθk^wəyám, Skwχwú7mesh, and səliłwətaʔt symbols, patterns, artwork, and language in every element of the neighbourhood
- Convey that a threshold is being crossed and that something special awaits on the other side through welcoming points of entry steeped in MST culture
- Foster the warmth and feeling of being home that is created by the longhouse



Provide public access throughout

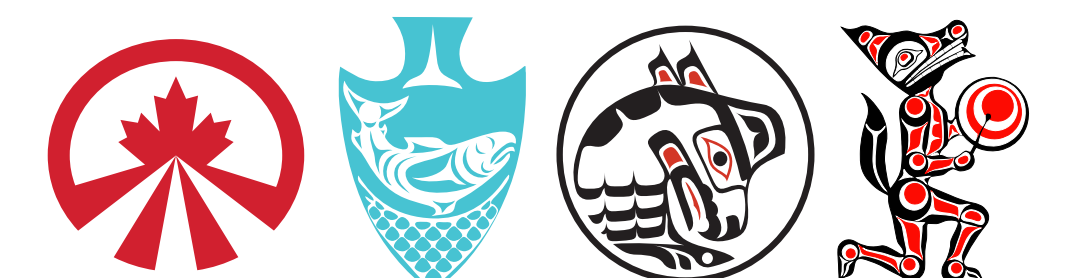
Example applications:

- Create a neighbourhood that welcomes people from all directions and invites them to enter and pass through
- Instill a sense of transition to a truly special place that is inclusive to everyone who arrives and lives there
- Provide places for people to gather, whether they live there or are visiting



ʔəyálməx^w/Iyálməxw

INSPIREJERICHO



Spirit of the Longhouse

Our history is important. Everything is passed down—traditions, ceremonies, stories, names, and places. The longhouse is where we received the teachings of our ancestors. It's a place of dancing, learning, ceremony, sharing. It's also where we lived together—all generations—and where we care for our people. It's where we belong. It's where we thrive.

ʔəyálməx^w/Iyálməxw/Jericho Lands will be a place of living together, where homes, traditions, and knowledge are shared. It will be a place that protects and guards our teachings. It will be a place that embraces Indigenous joy and community, where people feel the significance of how we lived and celebrated in our longhouses.

DESIGN PRINCIPLES

Build a woven fine-grained urban fabric to meander and discover

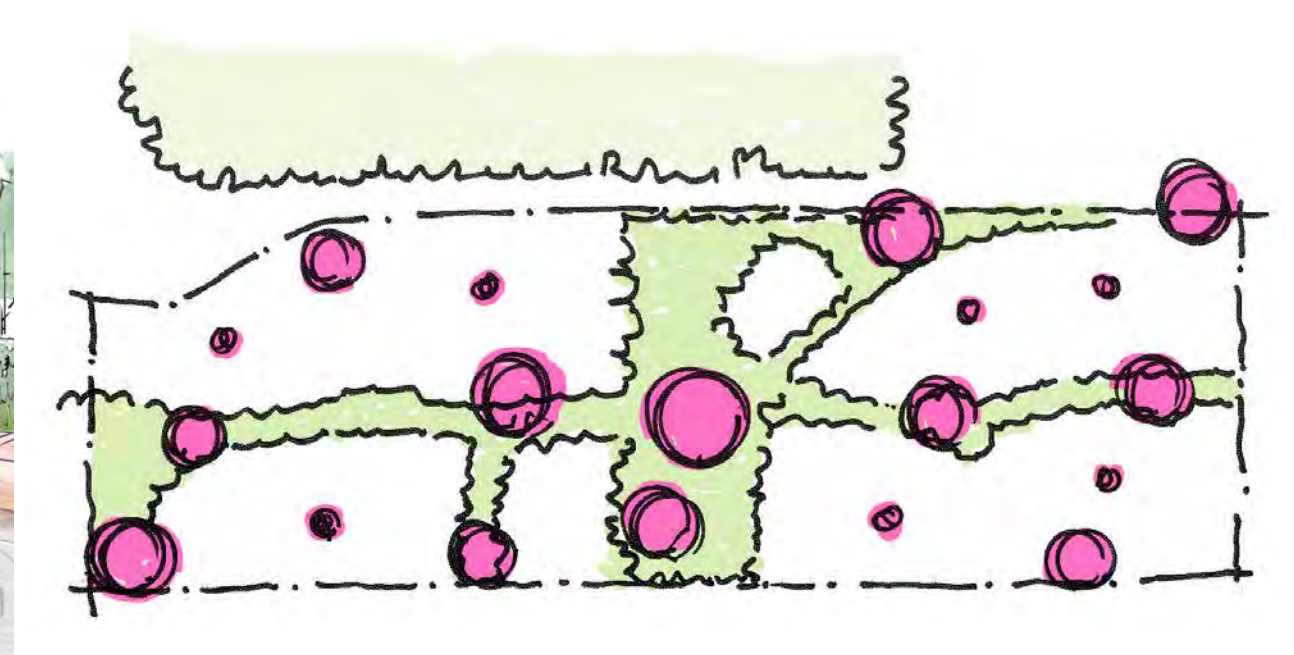
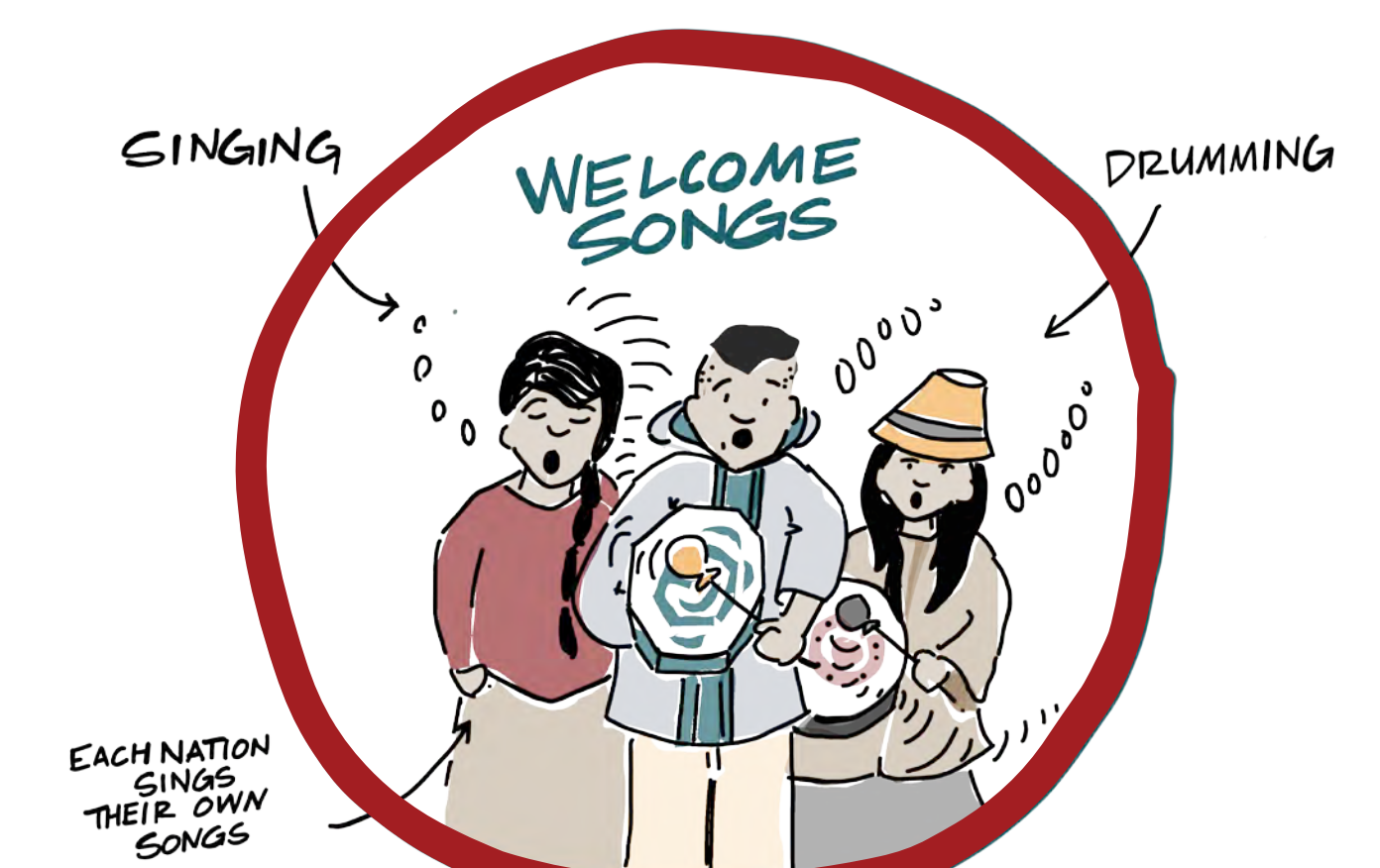
Example applications:

- Include a diversity of welcoming spaces for storytelling, sharing, and cultural and language exchange
- Provide unique journeys to and through the future neighbourhood from different points of arrival

Introduce diversity of scale, massing, materials and architecture

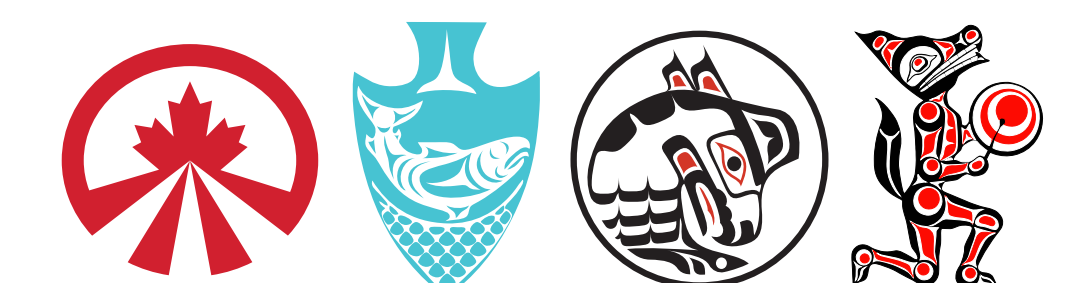
Example applications:

- Design and place parks, public spaces, and buildings to be respectful of the broader neighbourhood and natural context, and to maximize the enjoyment and use of parks and public spaces
- Step up building heights from the neighbourhood, existing and future parks, and open spaces
- Prioritize natural materials when building the future neighbourhood at ʔəyálməx^w/Iyálməxw/Jericho Lands, including for public spaces and buildings
- Provide a variety of homes, with an emphasis on inclusivity and attainability



ʔəyálməx^w/Iyálməxw

INSPIREJERICHO



Honouring the Ridge

The ridge is where we would look for friends and foes. It's how we welcomed and safeguarded, where our watchmen, messengers, and warriors watched, ran, and protected. The ridge was also rich with resources, a place where we hunted elk, harvested crab apples, and dried fish in the warm summer wind.

This will be a place that honours the stories that the land tells, and that connects us with other sacred places beyond ʔəyálməxʷ/Iyálməxw/Jericho Lands.

DESIGN PRINCIPLES

Protect views to significant natural and cultural features

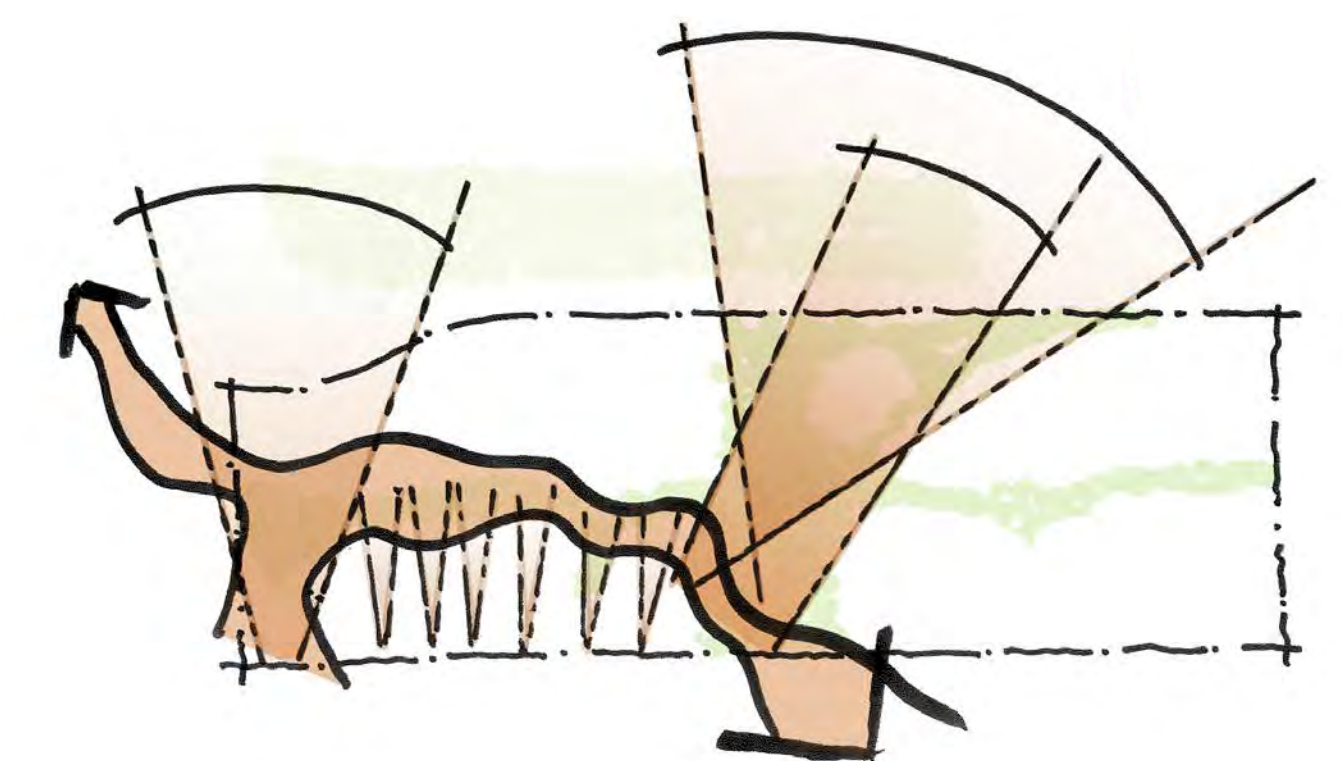
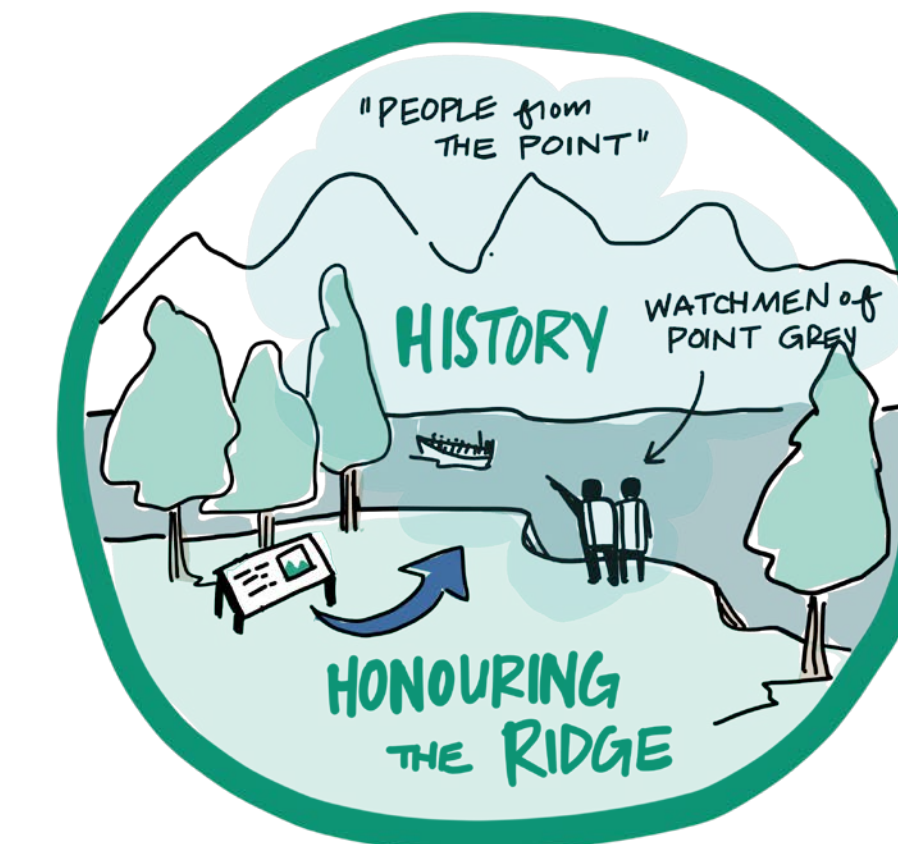
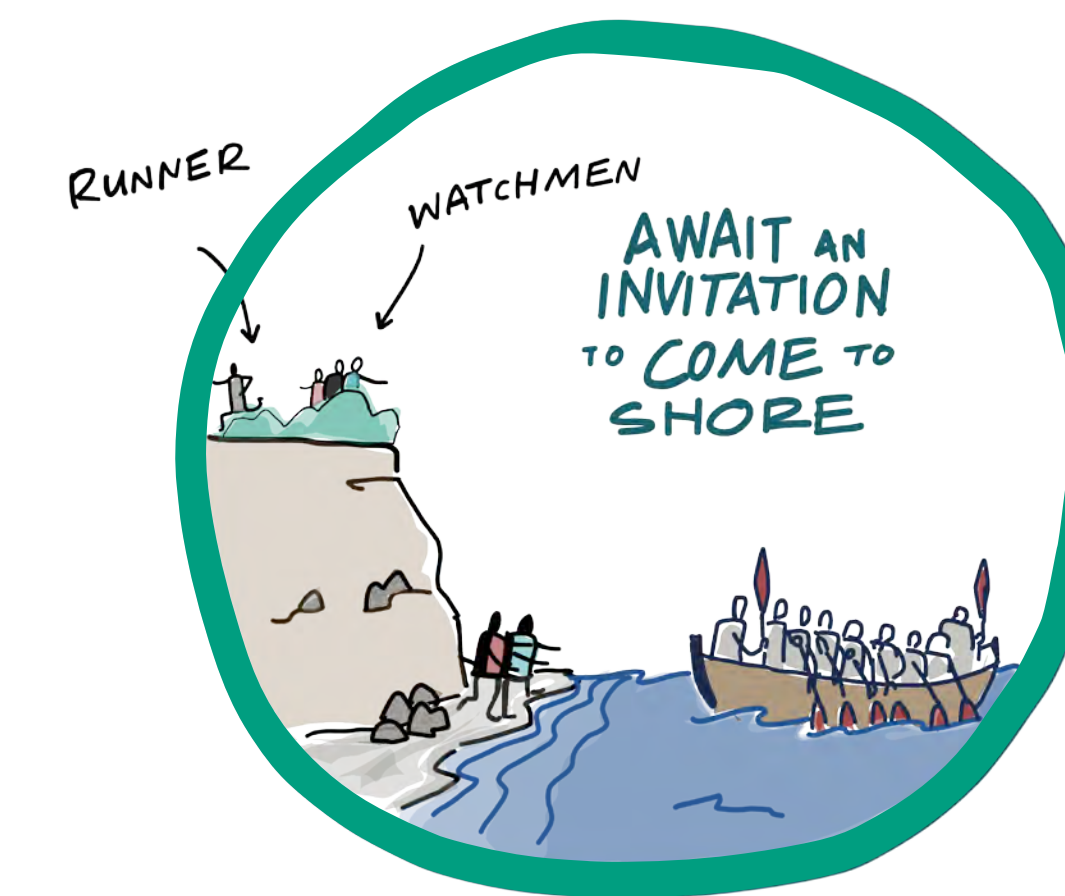
Example applications:

- Honour the history of this place as a lookout—and honour the Sisters and other sacred places in the distance—by protecting and celebrating views from the ridge
- Maintain views to water and to natural and built features that carry significance in MST culture, including the long and significant views across the Salish Sea to the mountains

Create accessible connections and spaces

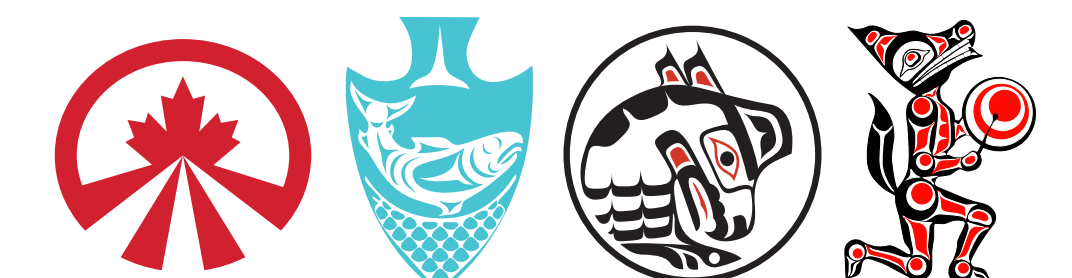
Example applications:

- Create accessible connections to the ridge so that people of all ages and abilities can take in its views and stories
- Ensure people will be able to access spaces and structures throughout the neighbourhood, whether young or old, or arriving by foot, bicycle, transit, or mobility aid
- Enable people with a range of physical capabilities to safely and comfortably navigate and experience the neighbourhood and gathering spaces



ʔəyálməxʷ/Iyálməxw

INSPIRE JERICHO



Water as Life Giver

Water is more than just water. It is sacred, giving life in many ways and forms. Our origin stories are carried through water, and it is part of our cultural ceremonies. We are taught to bathe, bless, and work with water. It heals, cleanses, and rejuvenates us.

Water is how we travelled and built kinship. It is home to orca, birds, and the sea creatures we eat. We must protect it.

ʔəyálməx^w/Iyálmexw/Jericho Lands will be a place where our people can see, hear, smell, and touch water.

DESIGN PRINCIPLES

Slow, restore, store, show and hydrate

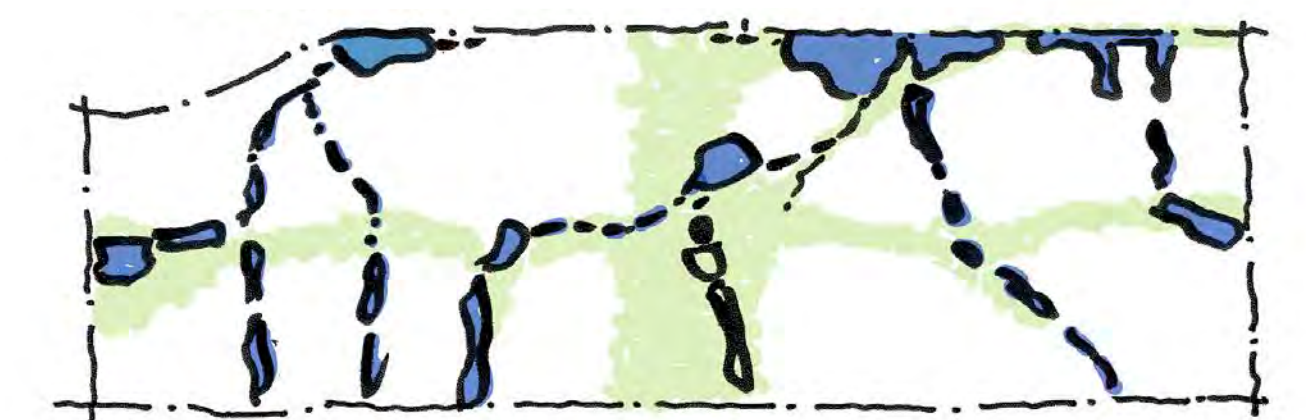
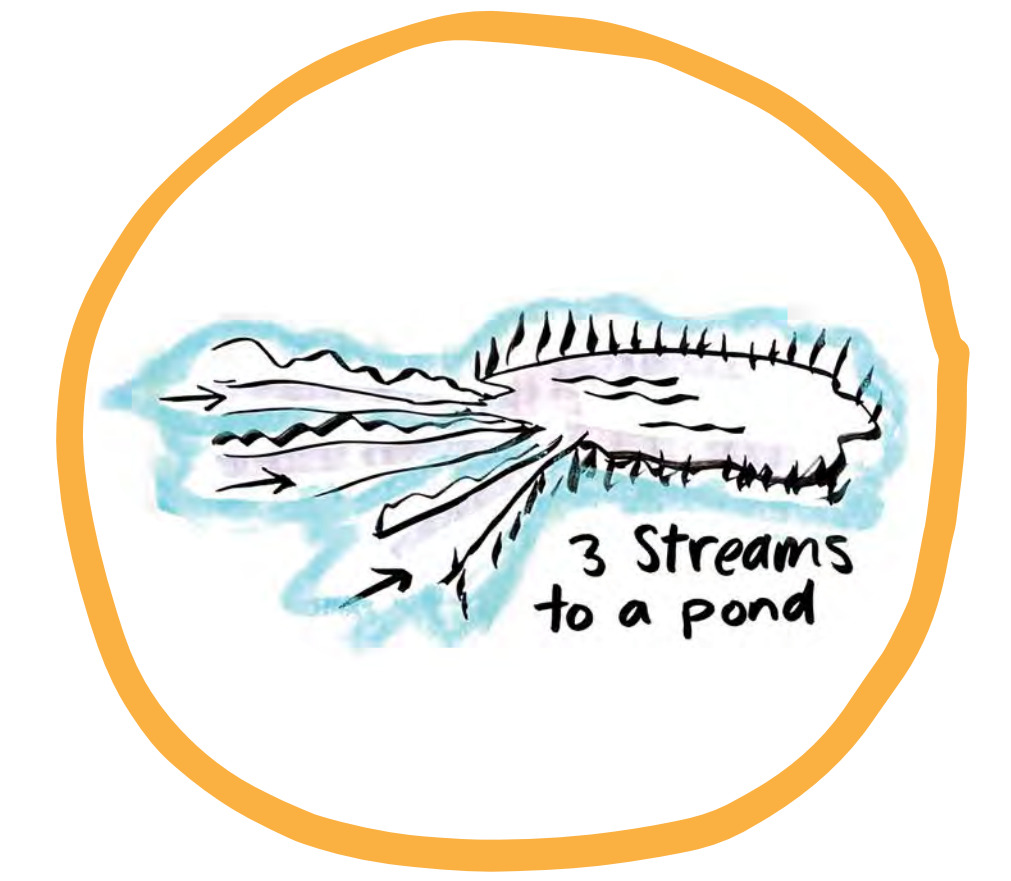
Example applications:

- Reveal and see, and celebrate the sights and sounds of water
- Create spaces where people can come into direct contact with water, including for wading, immersion, cleansing, healing, and ceremony
- Honour the MST relationship to water through sights and sounds—ponds, fountains, pools, and reclaimed streams—to provide places of tranquility
- Celebrate MST’s maritime history, traditions of canoe races and journeys, and kinship relationships through connections to boat launches

Protect and conserve water

Example application:

- Conserve water through building design and capturing and recycling rainwater, and protect its quality through native plant species



ʔəyálməx^w/Iyálmexw

INSPIREJERICHO

