

Cultural Significance of ʔə́yálməxʷ/Iýálmexw the Jericho Lands

ʔə́yálməxʷ/Iýálmexw is part of an interconnected network of cultural sites that exist throughout xʷməθkʷəy̓əm (Musqueam), Sḵwə́wú7mesh (Squamish), and sə́lilwə́təʔ (Tsleil-Waututh) territories. For thousands of years, these have been the lands and waters on which we have resided, worked, and followed our cultural customs. These territories offered our ancestors a life of abundance with smelt, coho and chum from the creeks and sea, and deer and elk from the uplands. It was a place to gather materials for homes and our families. Today, these lands offer us, the descendants of those original peoples, a new form of abundance.

ʔə́yálməxʷ/Iýálmexw was connected to other villages and campsites by a network of trails radiating across our territories. In our oral history, it was from there that an ancestor to many xʷməθkʷəy̓əm (Musqueam),

Sḵwə́wú7mesh (Squamish), and sə́lilwə́təʔ (Tsleil-Waututh) families named qiyə́plənəxʷ / Kiyə́pelánexw was one of the warriors who gathered to defend against northern people who would raid our various communities.

It was also a site of many large communal cedar plank longhouses that measured hundreds of feet in length, including one owned by Shenáwtsut (Jericho Charlie). Here, thousands of guests from the Fraser Valley, Vancouver Island, up the coast, and Puget Sound would be hosted at gatherings organized by the residents of ʔə́yálməxʷ/Iýálmexw.

The redevelopment of ʔə́yálməxʷ/Iýálmexw the Jericho Lands is a generational opportunity for us to reaffirm these relationships— to honour our heritage, to rebuild our communities, and to celebrate our unique identity. This building of a new ʔə́yálməxʷ/Iýálmexw (Jericho) is to remind ourselves, and educate all local residents, about the essential connections between our three Nations, and our ongoing connection to these places we have called home for so many generations.

MST CULTURAL WHORL

The MST Cultural Whorl provides the foundation for the draft Policy Statement.

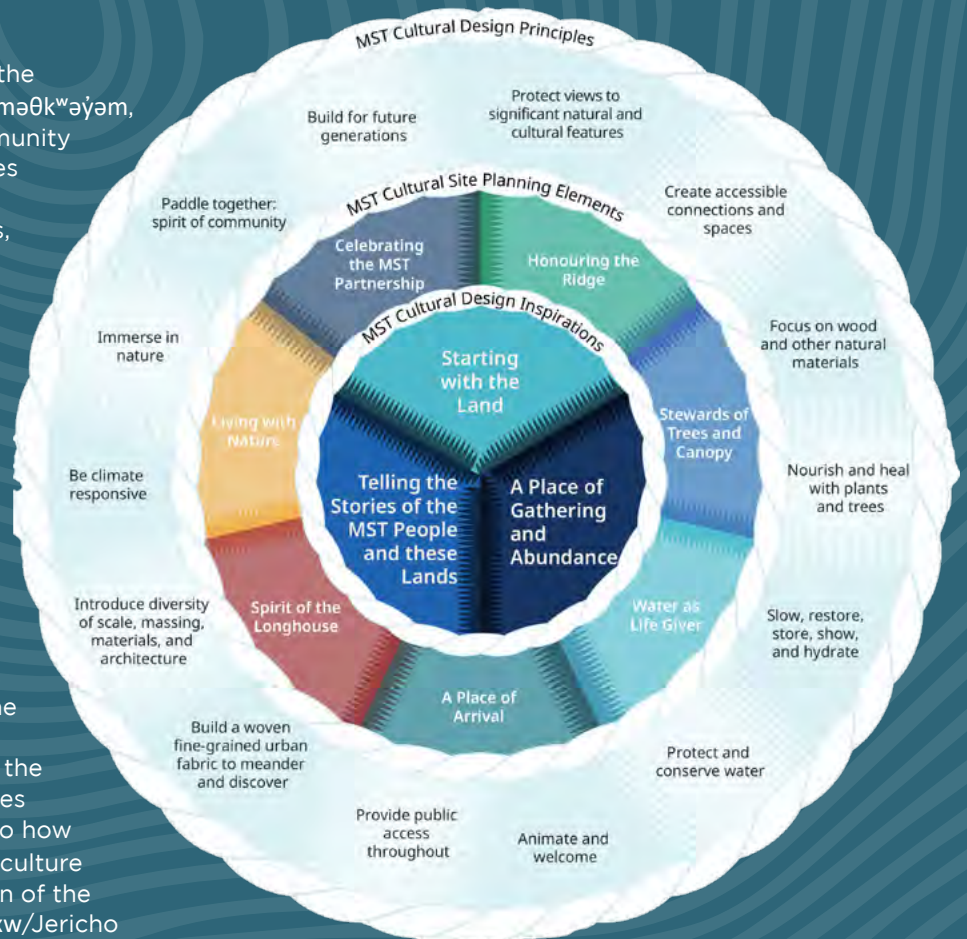
The MST Cultural Whorl was created from the knowledge, stories, and input shared by xʷməθkʷəy̓əm, Sḵwə́wú7mesh, and sə́lilwə́təʔ Nations' Community Members between 2019 and 2023. It weaves a pattern of interconnected cultural design inspirations, cultural site planning elements, and cultural design principles that will blanket ʔə́yálməxʷ/Iýálmexw/Jericho Lands with MST culture.

Design and Planning Inspired by Traditional Practices: The Spindle Whorl

The spindle whorl is a tool historically used by Coast Salish people to spin wool from animals such as Salish woolly dogs and mountain goats. The use of the whorl allows a tight knit weave and intricate detailed pattern designs.

In the centre of the MST Cultural Whorl, there are three Cultural Design Inspirations that provide the foundation for planning the new community. In the middle layer, seven Cultural Site Planning Elements expand on the Inspirations. Finally, the outer layer describes 14 Cultural Design Principles which speak to how xʷməθkʷəy̓əm, Sḵwə́wú7mesh, and sə́lilwə́təʔ culture will be imprinted in the planning and design of the future neighbourhood at ʔə́yálməxʷ/Iýálmexw/Jericho Lands.

Like the wool spun with a spindle whorl, many of these Inspirations, Planning Elements and Design Principles are interconnected and overlap.



Note: the content on this page and in italics elsewhere in this document was provided by the MST Nations



DRAFT POLICY STATEMENT

ʔəyalməxʷ/Iyálmexw/Jericho Lands will be a high-density, mixed-use and car-light community centred on rapid transit, which embraces its natural setting and is welcoming and inclusive to all. It will provide approximately 13,000 new homes for 24,000 residents and 3,000 new jobs, supported by community amenities (including about 30 acres of parks and open space) and walking and cycling paths.

Plan Summary

The seven MST Cultural Site Planning Elements are integral to the planning of ʔəyalməxʷ/Iyálmexw/the Jericho Lands and are embedded throughout the policies in the plan. The following provides the Nations' descriptions of the elements with a summary of the key policy directions for each, as well as the overall public benefits package for the neighbourhood.

CELEBRATING THE MST PARTNERSHIP

The xʷməθkʷəy̓əm, Skwxwú7mesh, and salilwatał Nations paddle together. We are each different, but we are united in our shared history. We have a collective and collaborative culture, with strong kinship ties. Together, we cannot be stopped. ʔəyalməxʷ/Iyálmexw/Jericho Lands will honour our distinct yet blended cultures, and will the world how we are a people of one heart. At ʔəyalməxʷ/Iyálmexw/Jericho Lands, we will take our rightful place in our traditional territories.



Key Policy Directions

- The City will work in new and innovative ways with the MST Nations as unique rights and title holders, within the framework of UNDRIP, in advancing ʔəyalməxʷ/Iyálmexw/the Jericho Lands project.
- Ensure MST Nations' culture is embedded in the detailed planning and design of the neighbourhood for each rezoning phase through application of the Cultural Design Principles.
- Ensure MST naming opportunities for significant buildings (including the community centre and elementary school), new streets, and parks and public spaces within ʔəyalməxʷ/Iyálmexw/the Jericho Lands, and include representation of hə́łqəmiḥəm and Skwxwú7mesh languages in place names and signage.
- Celebrate the MST partnership through the three 49-storey Sentinel buildings, which should have exemplary architecture and high-quality materials.



SPIRIT OF THE LONGHOUSE

Our history is important. Everything is passed down – traditions, ceremonies, stories, names, and places. The longhouse is where we received the teachings of our ancestors. It's a place of dancing, learning, ceremony, and sharing. It's also where we lived together – all generations – and where we care for our people. It's where we belong. It's where we thrive.

ᑲᐱᐱᓄᓄᓄ/ᐱᐱᓄᓄᓄ/Jericho Lands will be a place of living together, where homes, traditions, and knowledge are shared. It will be a place that protects and safeguards our teachings. It will be a place that embraces Indigenous joy and community, where people feel the significance of how we lived and celebrated in our longhouses.



Key Policy Directions

- Create a high-density mixed-use community on rapid transit with a variety of housing and job space (including office and light/urban industrial) and daily needs within an easy walk or roll.
- Provide a diversity of housing types and a range of affordable housing options throughout the community, including social housing and secured rental housing.
- Foster the social, cultural and economic well-being of the MST Nations with culturally appropriate housing options, uses that support re-building the Indigenous economy, and spaces for cultural practice, gathering and celebrations.
- Provide new amenities including a community centre, non-traditional library, social and cultural spaces, childcare and an elementary school to support growth and help foster a livable and complete community.
- Integrate new development with the surrounding neighbourhood by centrally locating the tallest buildings with transitions down to the edges of the site.
- Building orientation, massing and design should frame and activate streets and public spaces, and create a variety of building types and forms.
- Ensure mid-rise and high-rise buildings are livable and neighbourly, contribute to pedestrian comfort, and mitigate shadow impacts on the public realm.

LIVING WITH NATURE

The trees, water, and mountains have taken care of our people for thousands of years. Reciprocity and regenerative ecology – where land is replenished after it is harvested or disturbed – is part of our Indigenous laws. We are generational thinkers and we are connected to the land.

Nature has always been held in a place of honour, and will continue to be at ᑲᐱᐱᓄᓄᓄ/ᐱᐱᓄᓄᓄ/Jericho Lands.



Key Policy Directions

- Design a low-carbon community that embraces the natural world and is adaptive to climate change.
- Create a minimum of approximately 20 acres of park space and 10 acres of public open space (e.g. plazas and linear spaces).
- Ensure parks and public open spaces are welcoming, well-connected and accessible to all, integrating MST Nations' cultural elements.
- Improve ecological connections between ᑲᐱᐱᓄᓄᓄ/ᐱᐱᓄᓄᓄ/the Jericho Lands and Jericho Beach Park, while minimizing impacts to sensitive natural areas.
- New development should integrate with and minimize disturbances to the land.
- Ensure ᑲᐱᐱᓄᓄᓄ/ᐱᐱᓄᓄᓄ/the Jericho Lands development meets or exceeds City policy requirements for sustainable large sites.

WATER AS LIFE GIVER

Water is more than just water. It is sacred, giving life in many ways and forms. Our origin stories are carried through water, and it is part of our cultural ceremonies. We are taught to bathe, bless, and work with water. It heals, cleanses, and rejuvenates us. Water is how we traveled and built kinship. It is home to orca, birds, and the sea creatures we eat. We must protect it.

ᑲᓐᓂᓐᓂᓐ/ᓂᓐᓂᓐᓂᓐ/Jericho Lands will be a place where people can see, hear, smell, and touch water.



Key Policy Directions

- Celebrate rainwater by reflecting the natural and historic movement of water across the site, integrating water sensitive design into buildings, natural and open spaces, and connections, and creating a resilient rainwater system that responds to the impacts of climate change.
- Manage groundwater to protect the aquifer, maintain flows to downstream natural environments and ecosystems, and to support groundwater recharge.
- Minimize the use of potable water for irrigation and in outdoor spaces.

STEWARDS OF THE TREES AND CANOPY

Important parts of our culture are rooted in trees. We use cedar and other traditional trees for canoes, longhouses, welcome figures, clothing, baskets, medicines, artwork, and ceremony. Trees also provide homes to other creatures, our relations. Significant trees and other plants will be protected and restored at ᑲᓐᓂᓐᓂᓐ/ᓂᓐᓂᓐᓂᓐ/Jericho Lands.



Key Policy Directions

- Protect and add significant trees to ensure a mature urban forest is integrated throughout the community over time.
- Embrace Indigenous design in buildings and landscapes and encourage the use of innovative building methods and materials, including significant use of wood/mass timber.
- Integrate significant trees, vegetation, and other landscape features throughout the site to enhance biodiversity and provide habitat areas.

A PLACE OF ARRIVAL

ᑲᐱᐱᓄᐱᓄ/ᐱᐱᐱᓄᐱᓄ/Jericho Lands has always been a place of arrival and kinship. Before colonization, we welcomed people here for trade, bartering, and gathering. Welcome figures stood at places of arrival, while house posts at the entrances of homes told visitors which families lived here.

Even though our ancestors were forced to leave, ᑲᐱᐱᓄᐱᓄ/ᐱᐱᐱᓄᐱᓄ/Jericho Lands will be a place that welcomes all. We are resilient. The neighbourhood will let people know that this is our land, and we are here to share it with others.



Key Policy Directions

- Ensure all people feel welcome on ᑲᐱᐱᓄᐱᓄ/ᐱᐱᐱᓄᐱᓄ/the Jericho Lands with accessible, multicultural and intergenerational public spaces that support a healthy and thriving community.
- Establish welcoming elements reflecting MST culture at key arrival points, such as the Cedar Heart Plaza.
- Create a car-light community that prioritizes safe and convenient active travel, with minimal general-purpose vehicle parking, and provision for shared micro-mobility and electric devices.
- Establish a fine-grained network of walking and cycling connections, including high-quality greenways, with strong integration into the surrounding neighbourhood.
- Create a transit-oriented community with strong connections to and integration with the proposed UBCx Jericho Station.
- Improve existing streets adjacent the site to enhance walking and cycling connectivity and integrate with the new community.

HONOURING THE RIDGE

The ridge is where we would look for friends and foes. It's how we welcomed and safeguarded, where our watchmen, messengers, and warriors watched, ran, and protected. The ridge was also rich with resources, a place where we hunted elk, harvested crab apples, and dried fish in the warm summer wind. This will be a place that honours the stories that the land tells, and that connected us with other sacred places beyond ᑲᐱᐱᓄᐱᓄ/ᐱᐱᐱᓄᐱᓄ/Jericho Lands.



Key Policy Directions

- Enhance the experience of the community and its setting by prioritizing views from public spaces.
- Celebrate the history of the Ridge by maintaining key views from public spaces (e.g. Watchmen's Hill and Energy Oval) to the water and natural features that carry significance in MST Nations' culture.
- Ensure accessible connections and spaces so that people of all ages and abilities can enjoy the Ridge views and stories.

PUBLIC BENEFITS STRATEGY

The following is a summary of the community amenities and infrastructure that will be provided to support growth and make ʔəyálməxw/Íyálməxw/the Jericho Lands an inclusive and livable new neighbourhood. (Note: figures are approximate and the specifics of affordable housing delivery will depend on funding opportunities from partnerships and senior levels of government.)



AFFORDABLE HOUSING

Social housing
(20% of residential floor area):
~2,600 homes

Secured market and below-market
rental housing (10% of residential
floor area): ~1,300 homes



CHILDCARE

~259 childcare spaces
(0-4 year-olds)

~240 childcare spaces
(5-12 year-olds)



PARKS AND OPEN SPACES

~20 acres of park space
~10 acres of public open space



ARTS AND CULTURE

Arts and cultural spaces (including
MST Nations' self-determined)
e.g. artist studios, carving, pavilion,
food, dance, music, weaving, etc.



COMMUNITY FACILITIES

Non-traditional library
("House of Learning")

Community centre

Social spaces (including MST
Nations' self-determined) e.g.
ceremonial spaces, healing,
employment, training, youth elders
and family spaces ,etc



PUBLIC SAFETY

Renewal and expansion
of Fire Hall #19



TRANSPORTATION

Street upgrades, new walking
and cycling connections, plazas,
transit integration, etc.



ONE WATER

Storm and potable
water upgrades



OTHER PUBLIC BENEFITS (delivered in partnership with other agencies)

Vancouver School
Board Elementary School

Proposed UBCx
Jericho Lands Station



Jericho Lands
Planning Program

©2023 City of Vancouver | 23-290

For More Information:

Visit: vancouver.ca

Phone: 3-1-1

Outside Vancouver: 604-873-7000

Hỏi chi tiết Obtenga Información

資料查詢 ਜਾਣਕਾਰੀ ਲਏ 3-1-1