

MST NATIONS ENGAGEMENT OVERVIEW

ʔəy'alməxw • Iy'álməxw • Jericho Lands

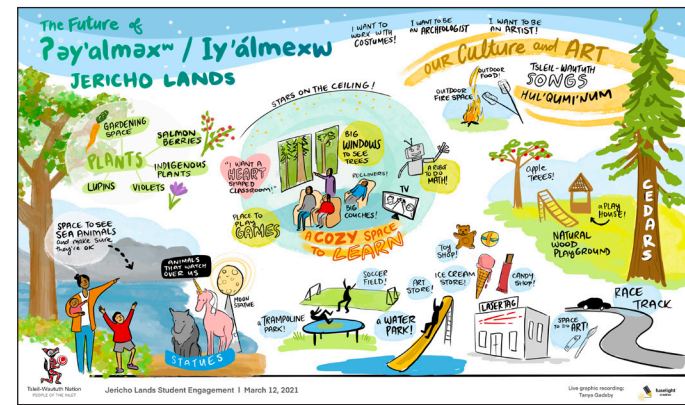
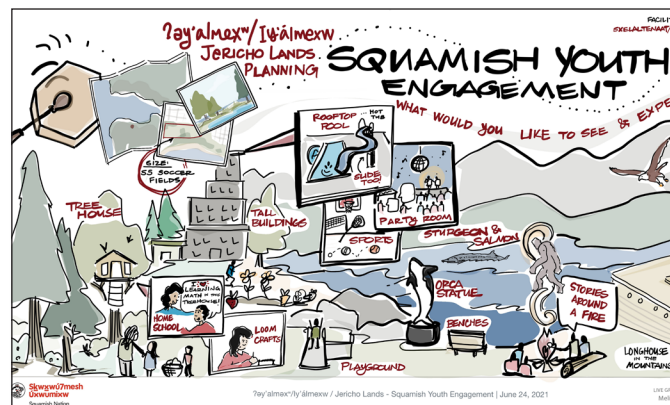
MST ENGAGEMENT

The landowner's project team has worked closely with the three MST Cultural Liaisons to engage with Musqueam, Squamish and Tsleil-Waututh Nations' community members to listen to and learn from MST stories, traditions, and aspirations for the future of the ʔəy'alməxw / Iy'álməxw / Jericho Lands site.

Input and feedback gathered during these sessions has helped inform the planning and design process to date, and will continue to do so as the development process proceeds.



MST Nations Cultural Liaisons (from left):
 Sxelaltenaat (Adrienne) Charlie - Squamish Nation, Dennis Thomas - Tsleil-Waututh Nation, Charleen Grant - Musqueam Indian Band



Examples of input from engagement with MST Youth



MST ENGAGEMENT - MUSQUEAM INDIAN BAND

ᑭᐱᐱᐱᐱᐱᐱᐱᐱ · ᐱᐱᐱᐱᐱᐱᐱᐱ · Jericho Lands

WHAT WE HEARD

The following words, images and ideas were shared by Musqueam Indian Band community members at engagement sessions for the ᑭᐱᐱᐱᐱᐱᐱ / ᐱᐱᐱᐱᐱᐱᐱᐱ / Jericho Lands site. These ideas represent a sample of input gathered from the community to support the project team in designing conceptual site options.

INCORPORATING
MUSQUEAM
DESIGN INTO
WHAT WE BUILD

ORAL HISTORIES AND TEACHINGS ARE KEY
- THIS IS THE WAY INDIGENOUS HISTORY IS
PASSED ON. STORIES TELL YOU WHO YOU ARE
AND WHERE YOU COME FROM.



PRESERVING
FOOD



A PLACE
WHERE WE CAN
PRACTICE OUR
TRADITIONAL
WAYS WITH
FOOD



WEAVING

JERICO IS A BIG PART OF ALL OF OUR
HISTORIES - MUSQUEAM, SQUAMISH
AND TSLEIL-WAUTUTH.
ALL DIFFERENT LAYERS ON THE LAND.

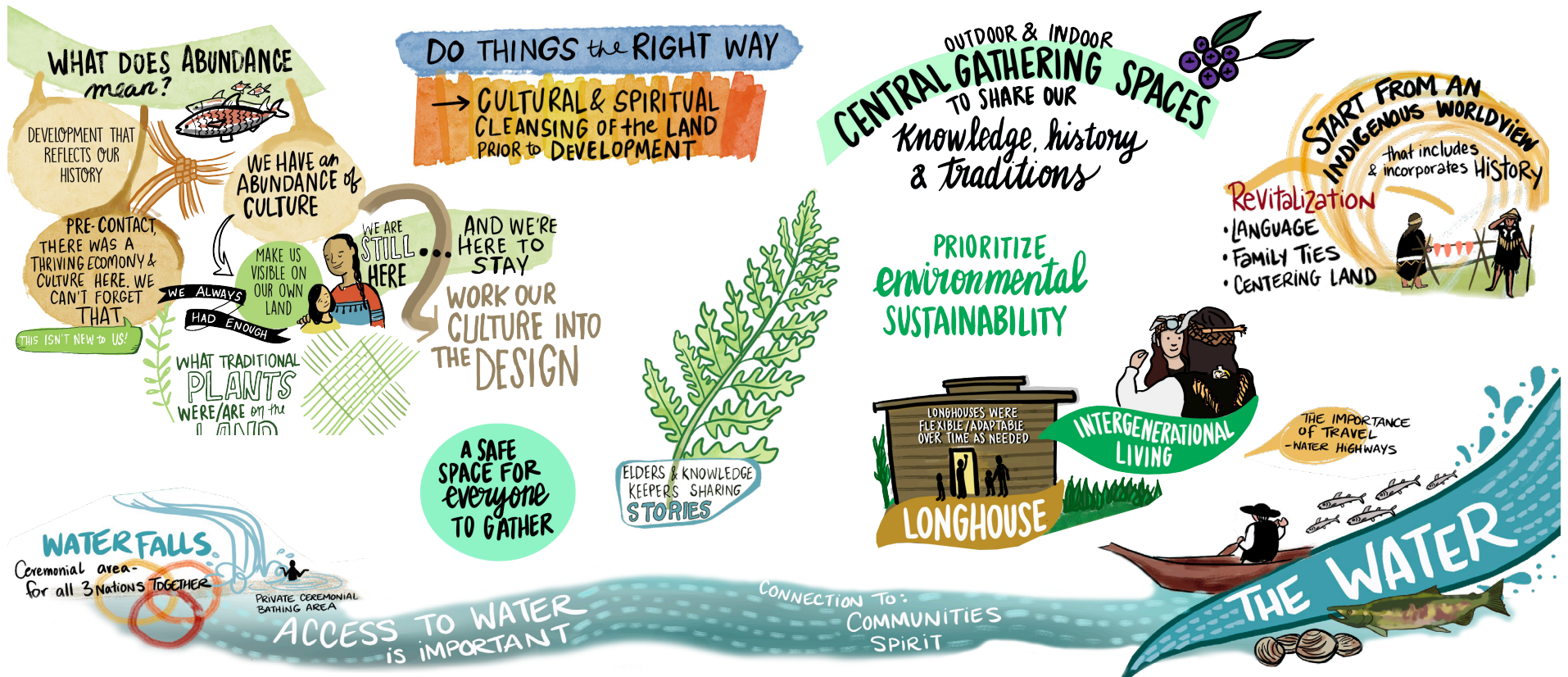


MST ENGAGEMENT - SQUAMISH NATION

ʔəy'alməxw • Iy'álmexw • Jericho Lands

WHAT WE HEARD

The following words, images and ideas were shared by Squamish Nation community members at engagement sessions for the ʔəy'alməxw / Iy'álmexw / Jericho Lands site. These ideas represent a sample of input gathered from the community to support the project team in designing conceptual site options.

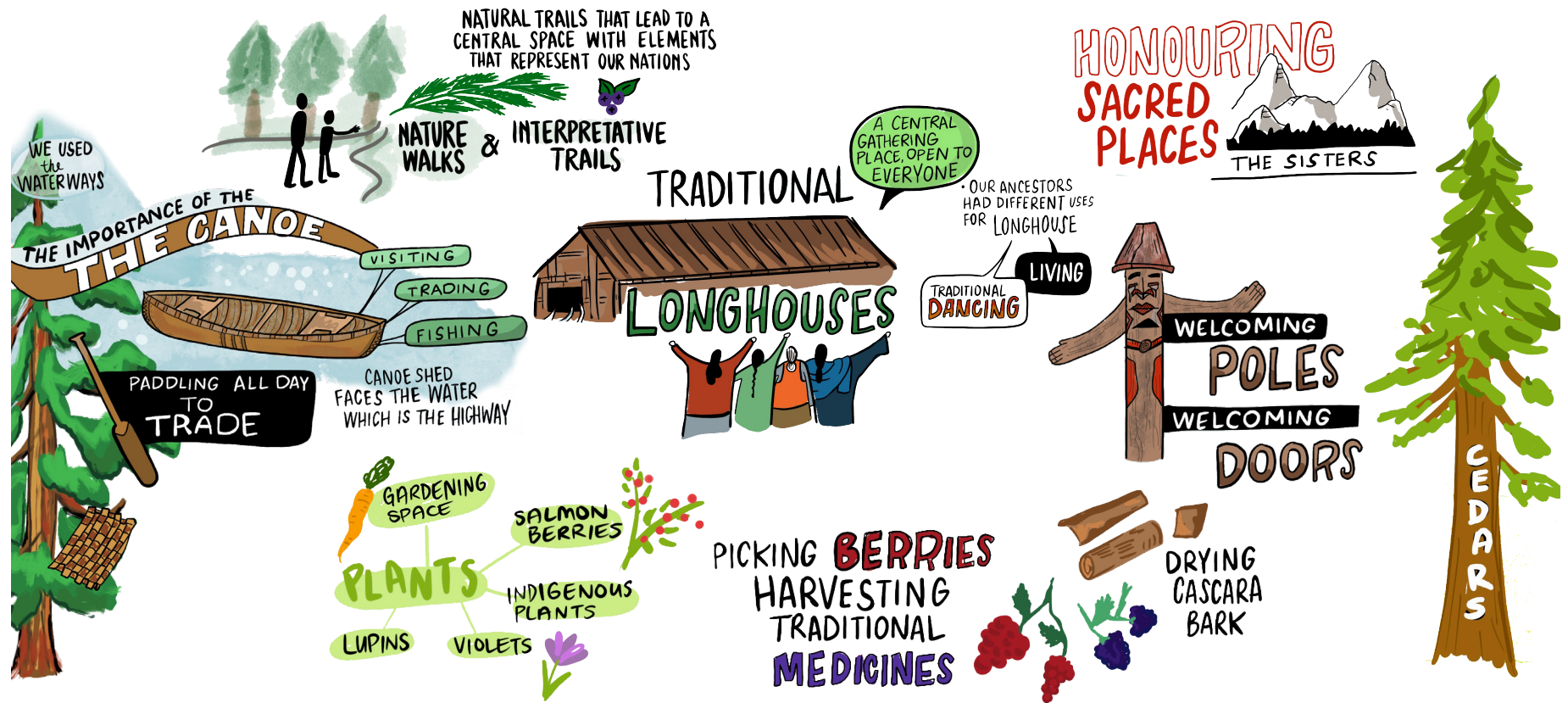


MST ENGAGEMENT - TSLEIL-WAUTUTH NATION

ʔəy'alməx^w • Iy'álməxw • Jericho Lands

WHAT WE HEARD

The following words, images and ideas were shared by Tsleil-Waututh community members at engagement sessions for the ʔəy'alməxw / Iy'álməxw / Jericho Lands site. These ideas represent a sample of input gathered from the community to support the project team in designing conceptual site options.



CULTURAL DESIGN INSPIRATION

ʔəy'alməxʷ • Iy'álmexw • Jericho Lands

CULTURAL DESIGN DIRECTIONS



Telling the Stories of the MST People and these Lands

ʔəy'alməxʷ / Iy'álmexw (pronounced Ee'yullmough) is part of an interconnected network of cultural sites that exist throughout Musqueam, Squamish, and Tsleil-Waututh territories. For thousands of years, it was part of the lands and waters on which the MST Nations hunted, gathered, and followed their cultural customs.

With this history comes a multitude of stories, stories of the lands and the people and beings that inhabited them.



Starting with the Land

The ʔəy'alməxʷ / Iy'álmexw / Jericho Lands site is defined by its topography, forest and proximity to the ocean. With a ridge that offers remarkable views across the water to the mountains. The forest, more specifically the cedar tree, being a significant resource and cultural asset for MST Nations. And the ocean, a place of arrival, of travel, and of sustenance is central to the site's history and cultural significance.

All aspects of the site design refer to the land and these features as a point of departure.



A Place of Gathering and Abundance

ʔəy'alməxʷ / Iy'álmexw was an important village located close to Jericho Beach and the Jericho Lands site. It was place to gather with relatives, to share food, and to settle. It was connected to other villages and campsites by a network of trails radiating across MST territories.

The streams, mudflats and ocean were invaluable for what they provided in drinking, cooking, fishing, and cleansing. Smelt, coho and chum from the creeks and sea, and deer and elk from the uplands, provided nourishment.

CULTURAL DESIGN INSPIRATION

ᑲᓐᓐᓐᓐᓐᓐᓐᓐᓐ • ᐱᓐᓐᓐᓐᓐᓐᓐᓐᓐ • Jericho Lands

CULTURAL SITE PLANNING ELEMENTS

Drawing from learnings and input from the MST Nations ("MST"), the following cultural site planning elements have been incorporated into the conceptual site plan options.



The MST honour the cultural significance of water – as a source of food, mode of transportation, and acknowledging the site’s intimate relationship to the Salish Sea. Expression of water flow across the topography, restoration to the health of the rainwater system, and creating moments to celebrate water for respite, ceremony and joy are hallmarks of the site design options.



Honoring the Ridge

For the MST, the ridge was a place of surveillance with long and significant views across the Salish Sea and was a connecting feature across the site and to neighbouring villages. Within the site design options, the ridge is integral to celebrating the topography and views as well as being a connecting feature within and beyond the site.

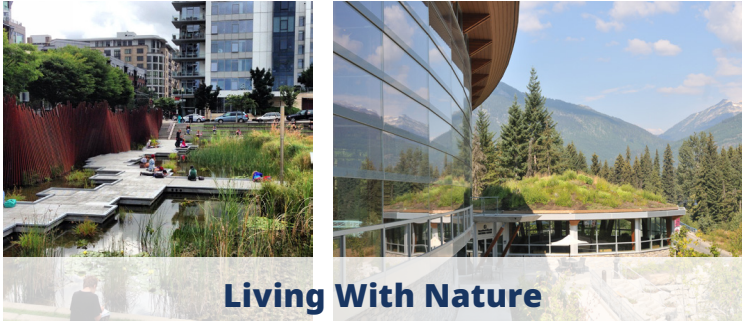


For centuries, the MST have been stewards of the land and honour the Cedar as a tree of life - utilizing all its parts in their ways of living. In recognition of the importance of trees and canopy, the site options explore the opportunity for maintaining, restoring and enhancing a rich tree canopy and for emphasizing close connection to trees through interactive cultural learning spaces and/ or pavilions centred around the forest, trees and multilayered canopy.



CULTURAL DESIGN INSPIRATION

ʔəy'alməxw • Iy'álmexw • Jericho Lands



Living With Nature

Traditional MST living and building practices were based on living with nature, and cultural values of stewardship are strong. Incorporating living with nature into site design through concepts of building orientation, ventilation patterns, native plantings, and integrating an ecosystems approach into site systems, within blocks and in buildings through biophilic design ensures the design is adaptive, resilient to changing needs and conditions over time.



A Place of Arrival and Welcoming

Those traveling to ʔəy'alməxw / Iy'álmexw would arrive from the Salish Sea. The MST Nations consider this area a traditional place of arrival and welcoming amongst their Coast Salish communities. This has been reflected in the site design options through instilling a strong sense of welcome and arrival at key entries to the site.



Spirit of the Long House (A Place of Gathering)

MST villages were centred around places of intergenerational gathering in ceremonial and living long houses. The site design options evoke the spirit of the long house by introducing flexible, communal gathering spaces integrated at the block scale in the form of central landscape or buildings.



Celebrating The MST Partnership

The partnership of the MST Nations is unique and valued. Coming together, side by side and working together as one allows for bold aspirations for the future of ʔəy'alməxw / Iy'álmexw / Jericho for generations to come. As a visible expression of the three Nations as stewards and partners, a series of iconic, landmark buildings – the 3 Sentinels – are introduced in each site option.