

Kitsilano Beach Park Seaside Greenway Improvements

The **Seaside Greenway at Kitsilano Beach Park Project** seeks to identify a location for a **separated cycle path** that will link McNicoll Avenue with Balsam Street, and improve safety and access for park and Greenway users.

The Seaside Greenway, in and adjacent to Kitsilano Beach Park, is a popular section of the 28km long greenway that connects Coal Harbour with Spanish Banks. It is also one of the few sections that does not currently provide separate paths for walking/rolling and cycling, which creates access and safety concerns.

This **separated cycle path** is expected to be in use until the future Kitsilano Beach Park Master Plan is completed and local transportation changes investigated: both of which will determine a permanent location for the cycle path and other park improvements.



Proposed Separated Cycle Path Route

In the first round of public engagement in August 2021, we heard that the top three values for a separated cycling path in the park were greenspace, connection, and directness, followed by impact and parking. During the second round of engagement in November 2021, we asked you to evaluate different cycle path options based on these values.

We have developed a proposed cycle path route incorporating these findings as well as safety, comfort, and technical and operational considerations.

Safety and comfort were top priorities already identified

Safety

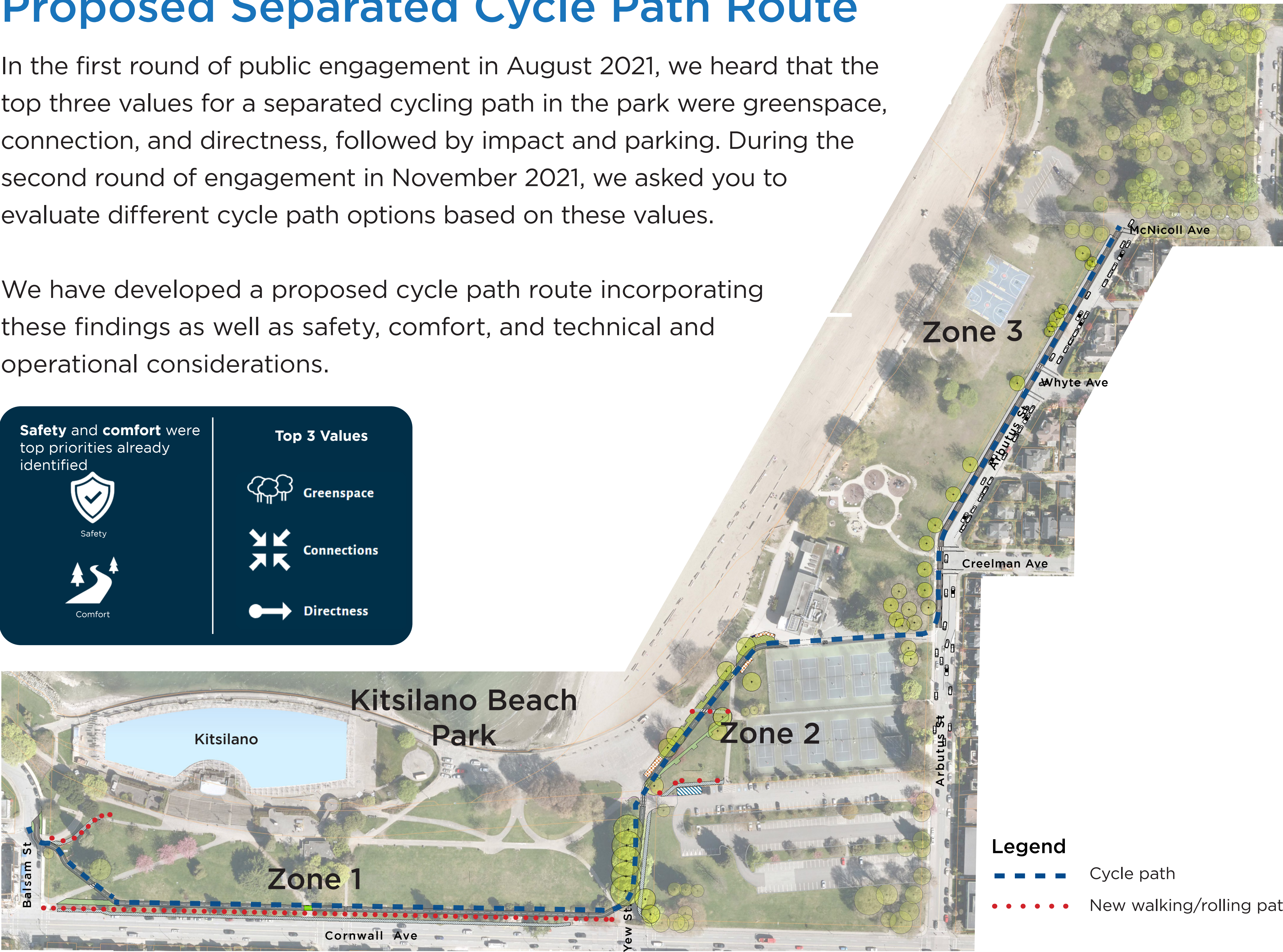
Comfort

Top 3 Values

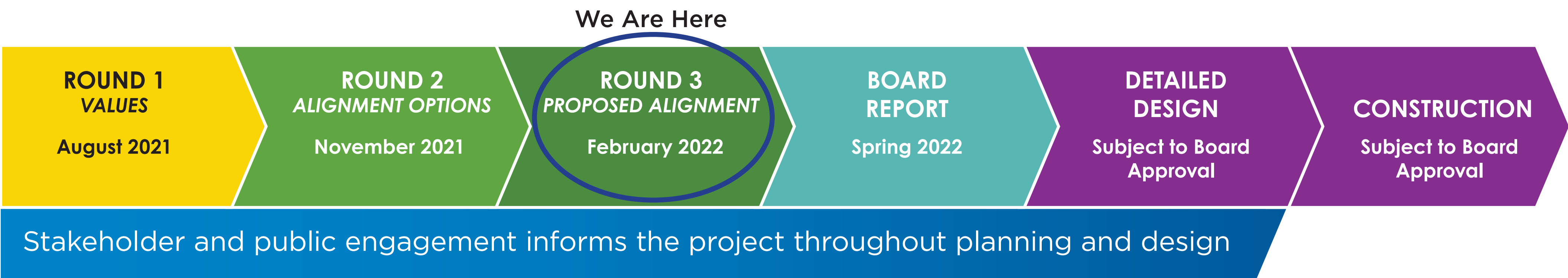
Greenspace

Connections

Directness

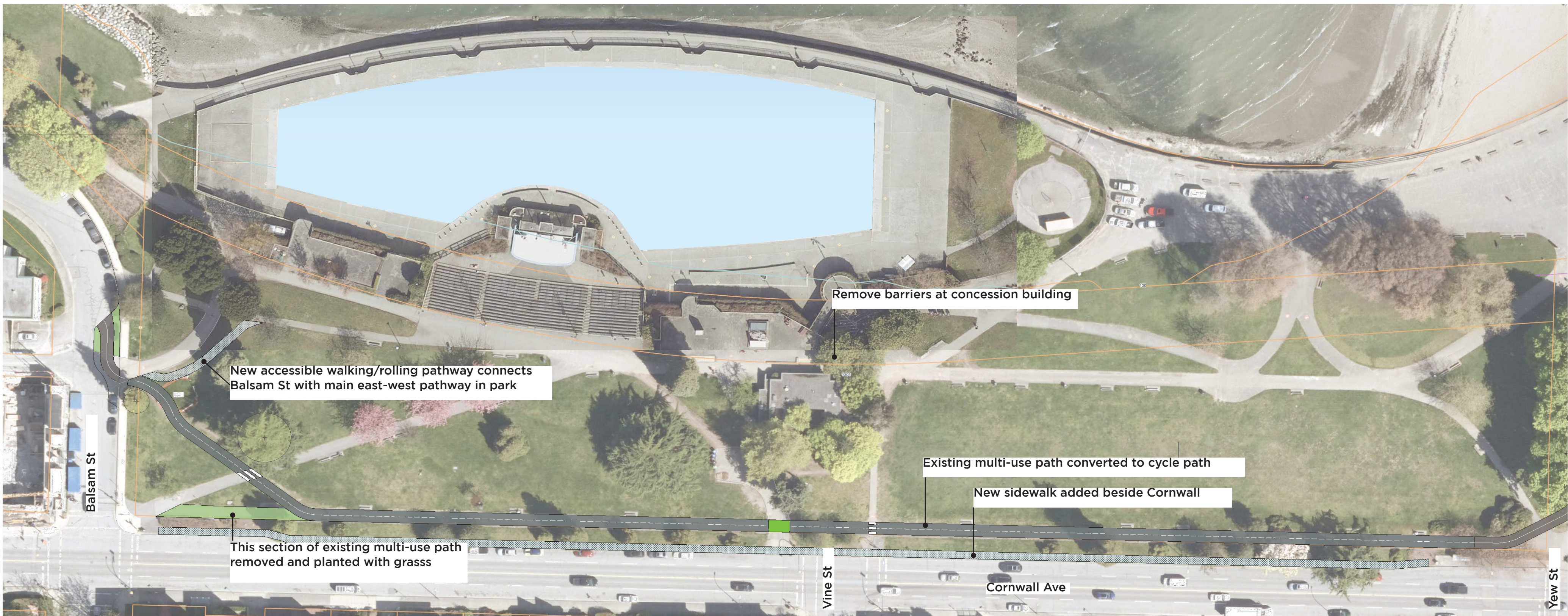


- Legend**
- Cycle path
 - ... New walking/rolling path



Kitsilano Beach Park Seaside Greenway Improvements

PROPOSED PATH: ZONE 1 - Balsam St to Yew St



Description

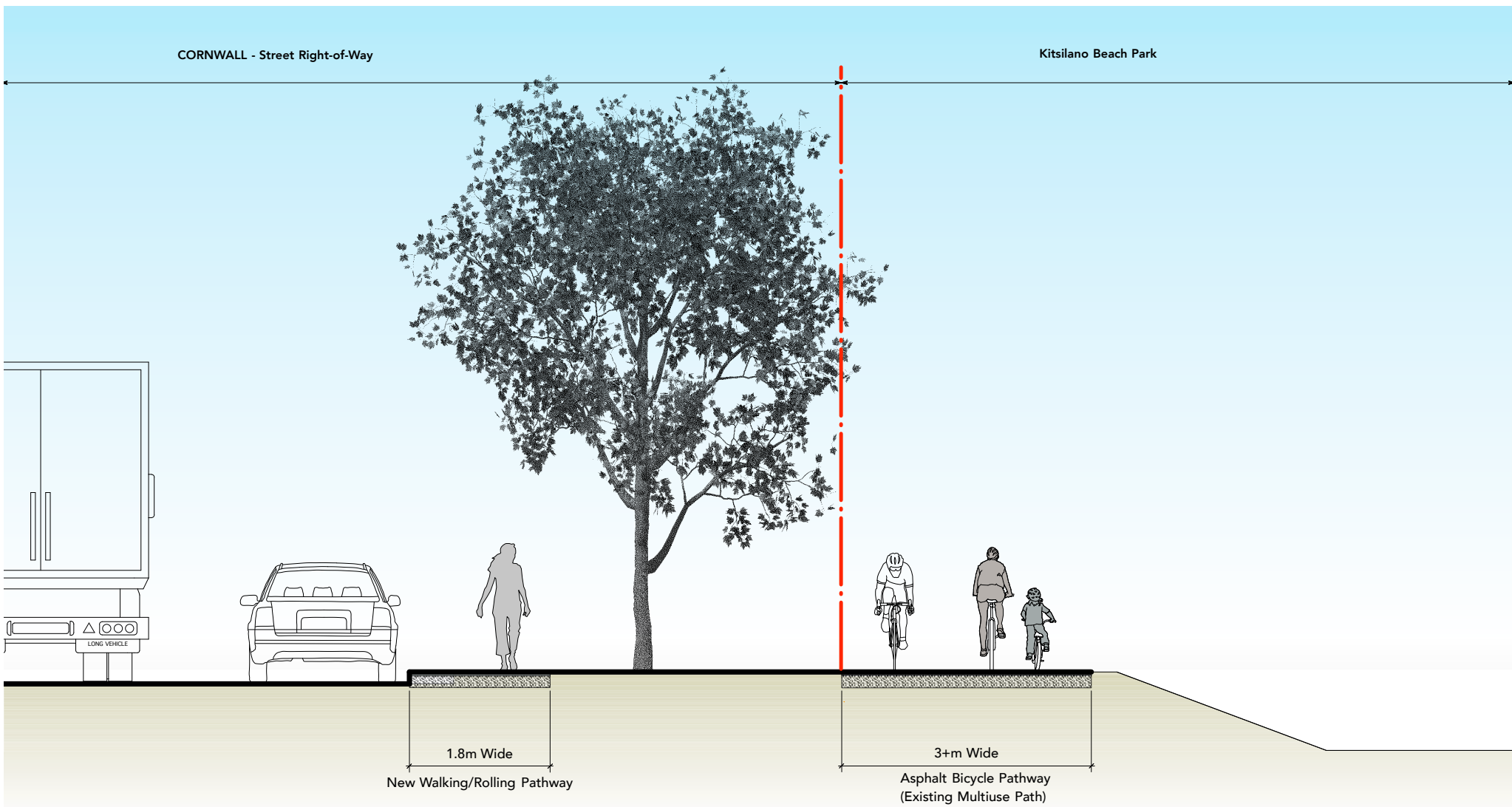
The existing shared path in the park will become the designated cycle path, and a new sidewalk will be added beside Cornwall Avenue, between Balsam and Yew Streets. A new accessible pathway near the service lane will be added to provide a direct connection from Balsam Street into the park. This proposed path alignment was ‘**Option B**’ in the second round of engagement.

Rationale

- Minimizes disruption to the park by avoiding adding a new pathway in the park, and preserves the popular, well used greenspace between Vine and Yew.
- A new sidewalk along the north side of Cornwall, between Balsam and Yew, maintains a direct connection between these two streets, and improves access for people parking on Cornwall.
- The new accessible path from Balsam improves access into the park.

Other considerations

- The steel gates beside the concession near the pool, along the existing west - east pathway, will be removed to improve accessibility.
- The sidewalk along Cornwall will require the removal of 3 to 4 trees along Cornwall. An arborist has determined these trees are in poor condition. Replacement trees will be planted.
- Some shrubs along Cornwall will need to be trimmed and others removed and replaced.
- New signage will be required in several locations to communicate the changes in circulation patterns



Approximate location of new sidewalk beside Cornwall Ave

Kitsilano Beach Park Seaside Greenway Improvements

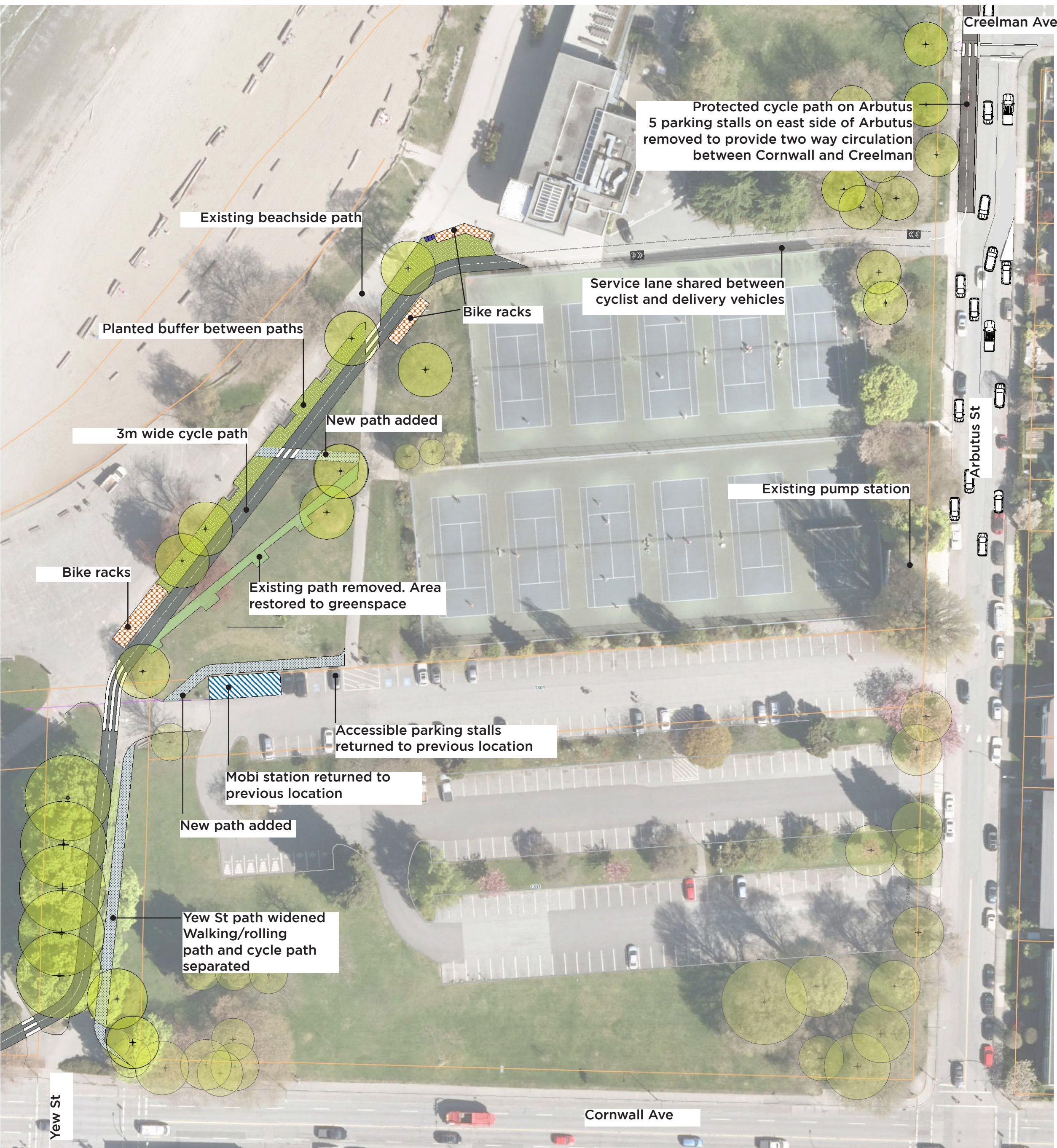
PROPOSED PATH: ZONE 2- Yew St to Creelman Ave

Description

A separated cycle path will parallel the Yew St and beachside pathways, and will connect with Arbutus St using the existing service lane, north of the tennis courts. This proposed path is a modified version of ‘**Option E**’ in the second round of engagement.

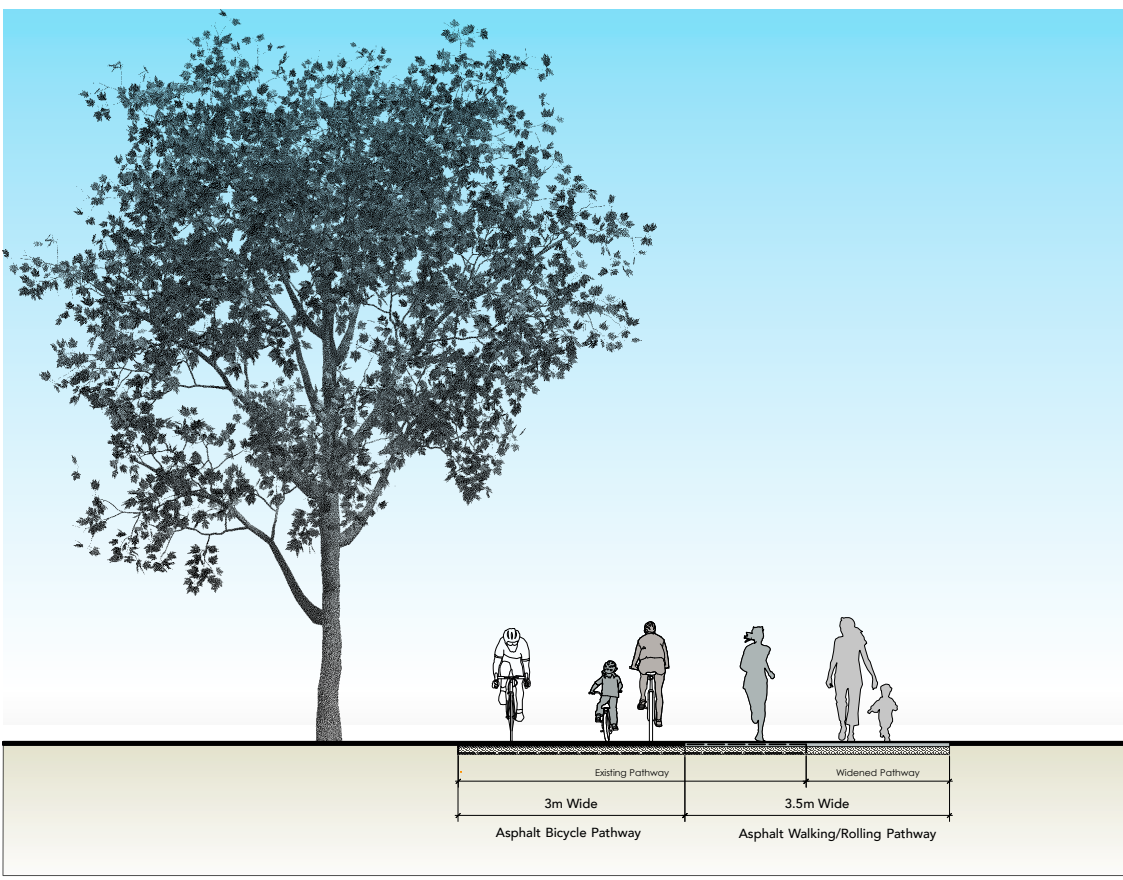
Rationale

- Provides controlled, and largely separated access for people riding bicycles, both to the park and along the Seaside Greenway
- Responds to access requirements to pump station beside Arbutus St
- Requires the least amount of park disturbance of the Zone 2 options. Can be quickly removed and lawn restored in the future
- Provides separation for different park users along the busy Yew St path
- Returns the south parking lot to its previous condition
- Restores two-way traffic on Arbutus St

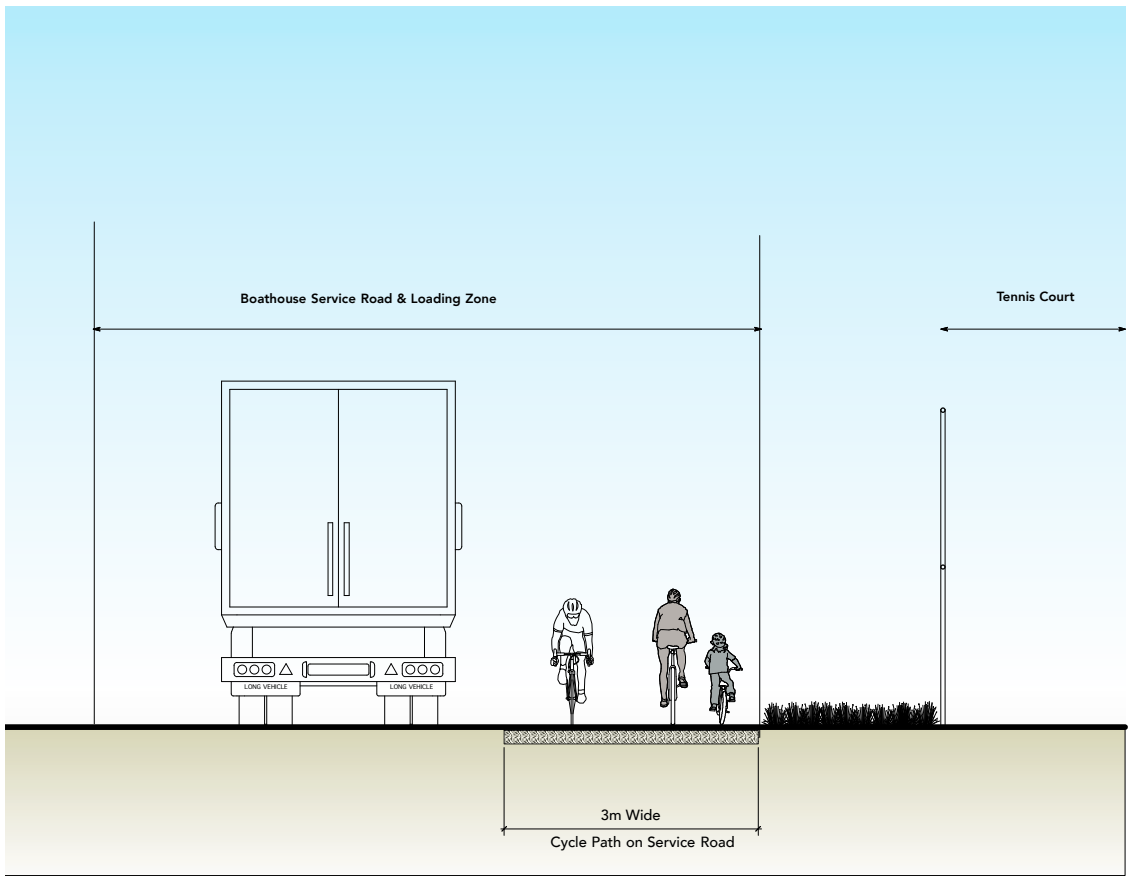


Other considerations

- Low vehicle volumes along service lane well within City’s requirements for shared streets and ‘AAA’ cycle paths
- Least impactful of options on events that occur in the park
- Does not impact access to EV charging stations



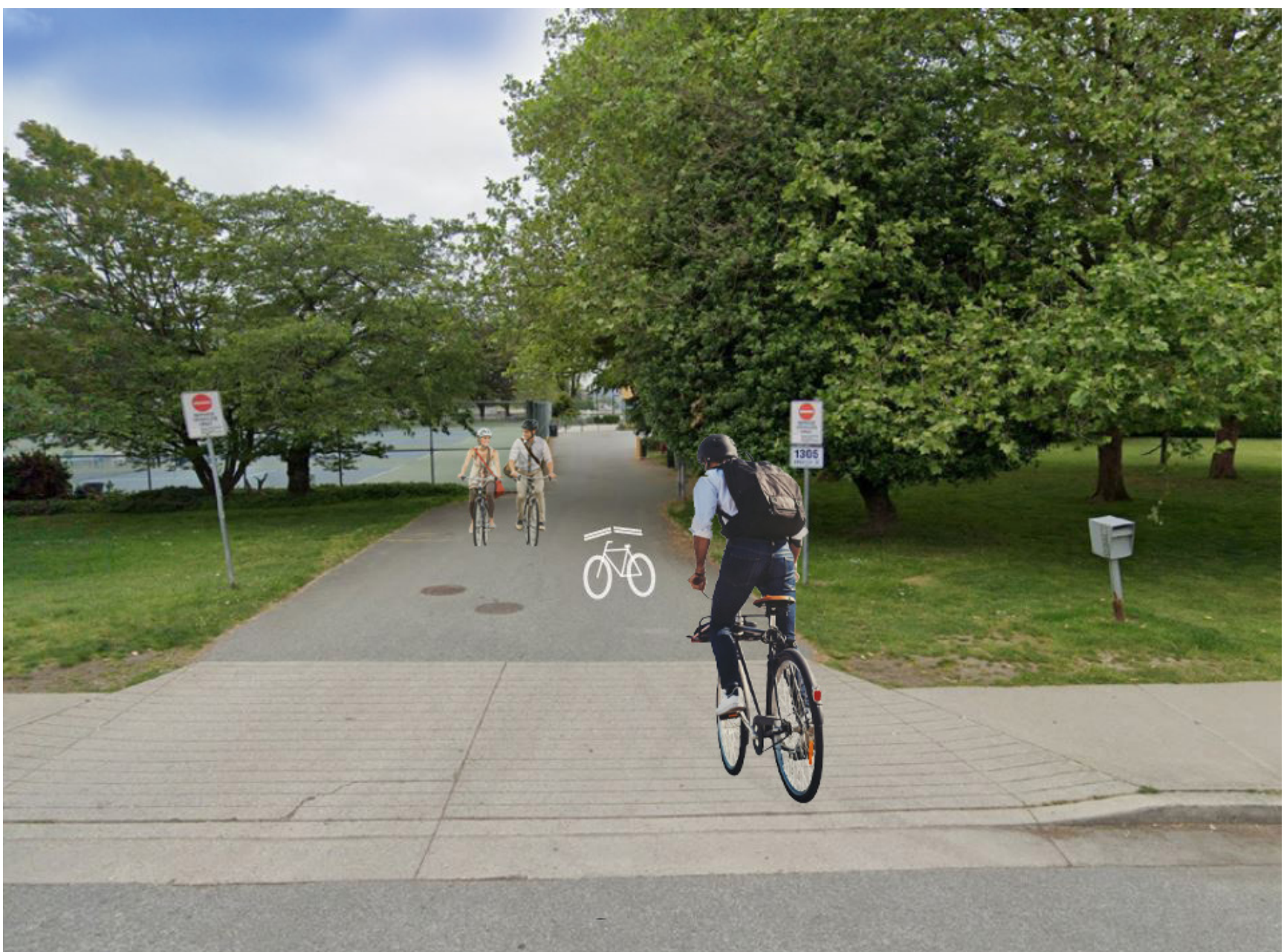
Separate cycle and walking/rolling path:
Yew St park entry



Separate cycle and walking/rolling path:
North side of tennis court



Approximate location of new cycle path between beachside path and tennis courts



New shared cycle path/service lane at Arbutus St

Kitsilano Beach Park Seaside Greenway Improvements

PROPOSED PATH: ZONE 3 - Creelman Ave to McNicoll Ave

Description

A protected cycle path on Arbutus Street that will be similar to the current temporary protected cycle path. This proposed path was ‘**Option G**’ in the second round of engagement.

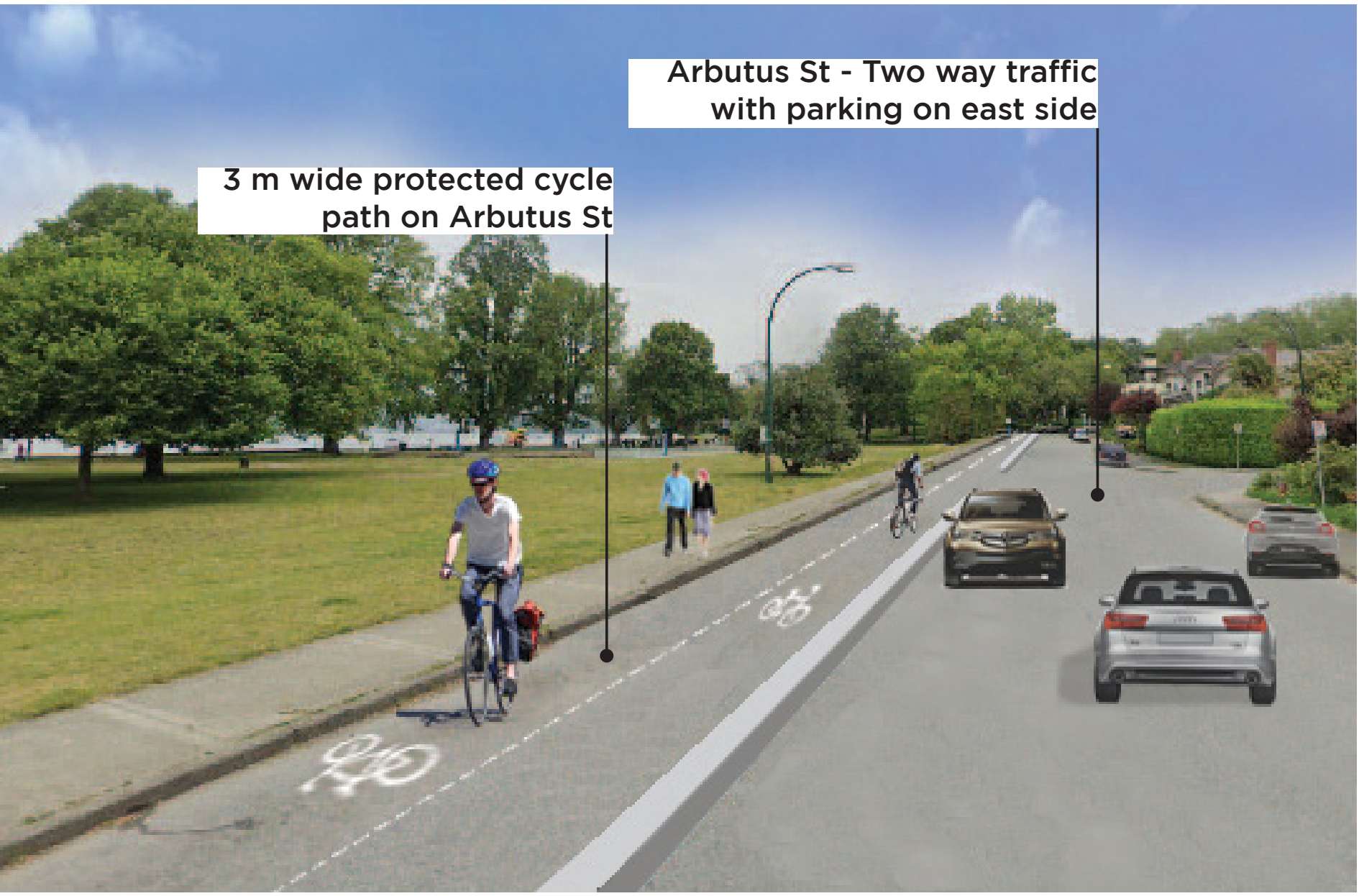
Rationale

- Preserves greenspace in the park
- Makes use of existing ‘**Slow Street**’ and existing pavement
- Arbutus St can be quickly returned to pre-protected cycle path condition

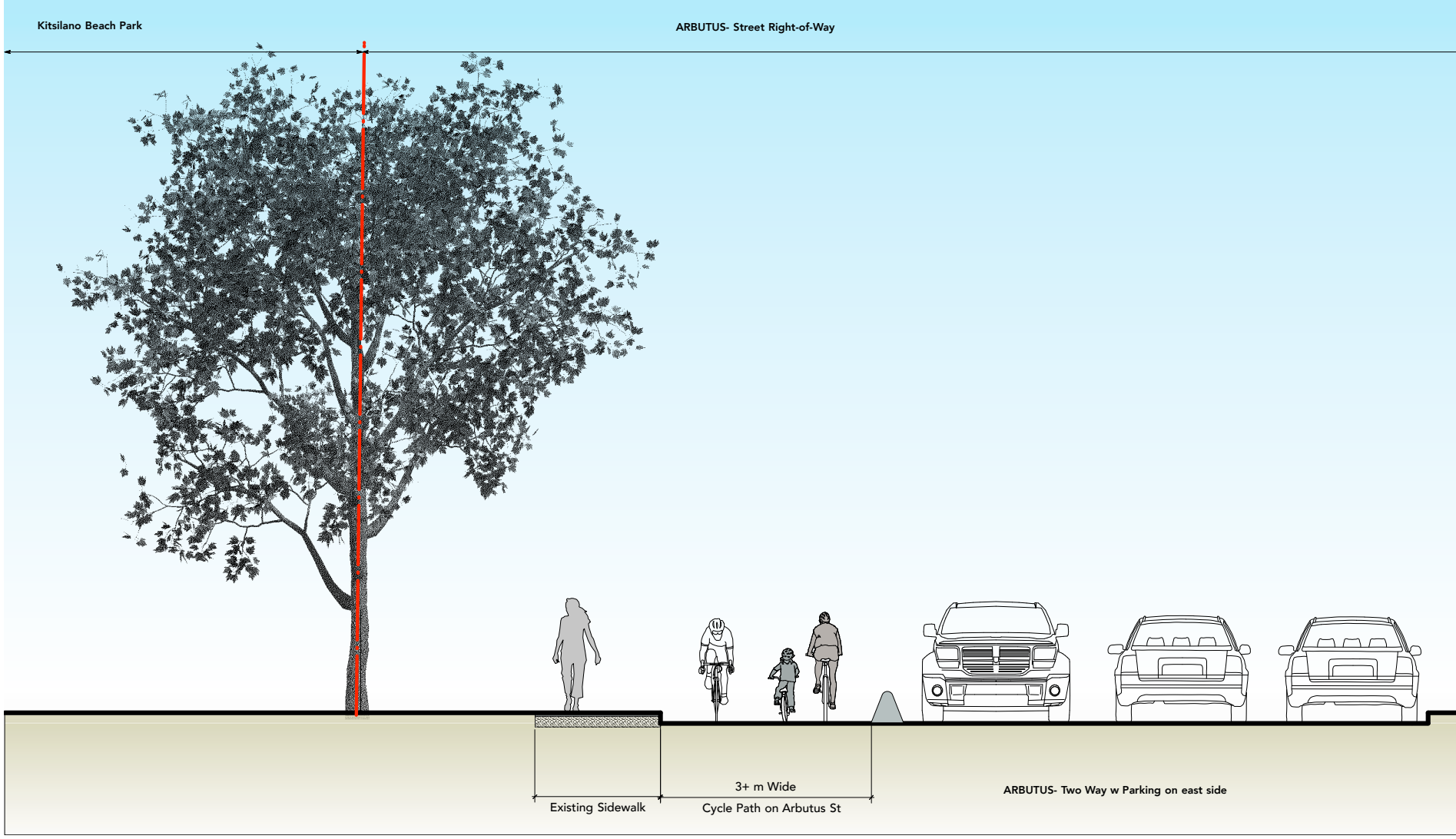


Other considerations

- The 3m wide cycle path will be narrower than the current protected cycle path, which will allow Arbutus St to function as a two-way ‘courtesy’ street between Creelman and McNicoll Avenues, which is similar to how many streets in Kitsilano operate
- Current concrete barriers will be replaced with a lower and narrower concrete curb similar to treatments recently installed along Beach Avenue in the West End



Approximate location of proposed protected cycle path along Arbutus St



Separated cycle path along Arbutus St