

A NEW PARK AT MAIN & 7TH

MOUNT PLEASANT, Vancouver

ROUND 2 PUBLIC ENGAGEMENT

Proposed Park Design

NOVEMBER-DECEMBER 2022



GUIDING PRINCIPLES



Accessible

Provide multiple access points from adjacencies and pedestrian circulation sloped at 5% or less.



Comfortable

Incorporate shade, weather protection, a variety of seating opportunities and a buffer along Main St.



Hierarchy of Space

Integrate a large space for events along with smaller, intimate spaces to accommodate individuals, families and groups.



Lively and Charismatic Park

Establish a street presence within Mount Pleasant neighbourhood, provide playful opportunities, reference terminus of Kingsway.



Multi-use | Flexible

Allow for a diversity of programming.



Significant Tree Canopy

Introduce tree planting to provide shade, comfort and seasonal interest.

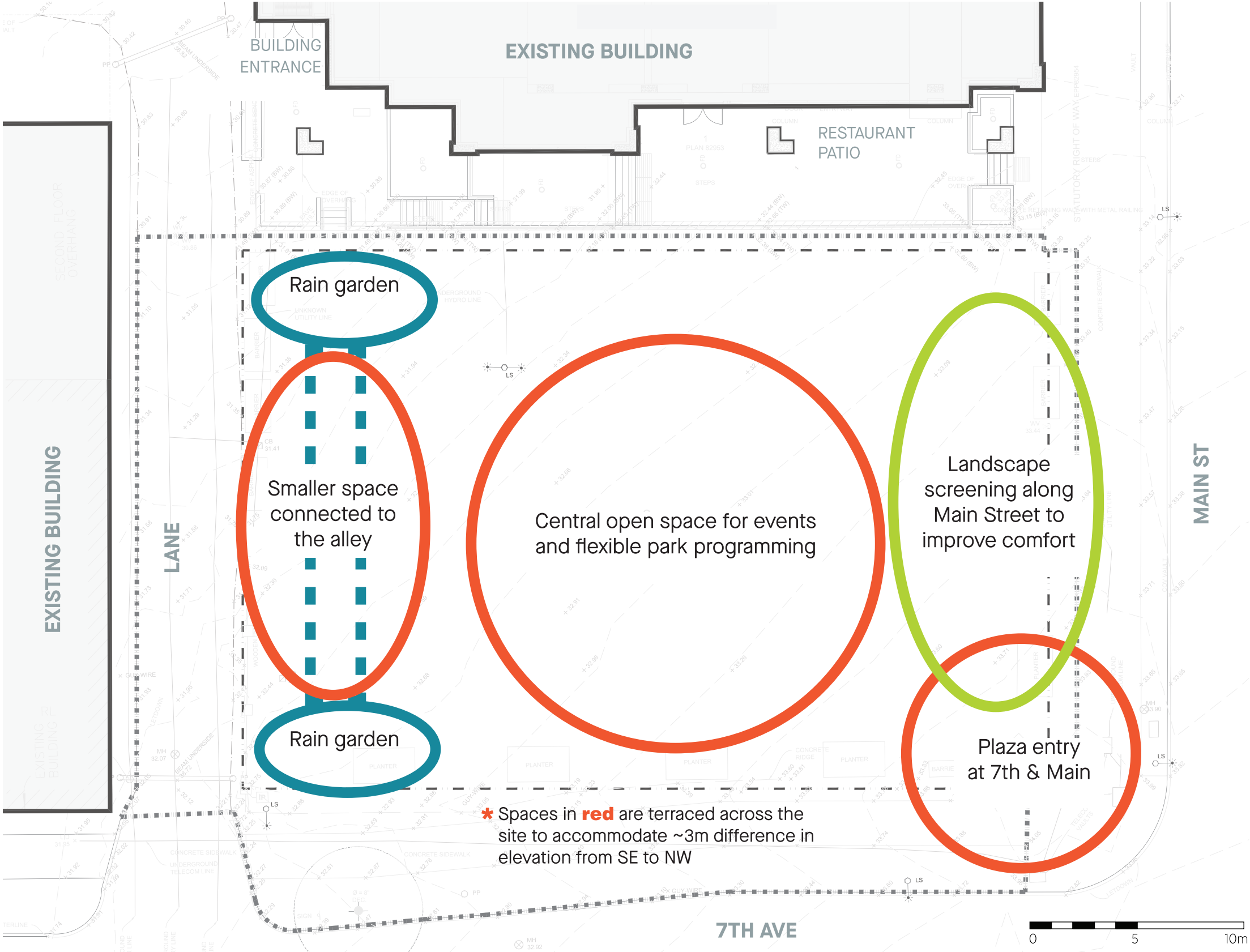


Sustainable

Manage stormwater onsite, include native planting, prioritize sustainable materials.



SPATIAL ORGANIZATION



Hierarchy of Space

The following design proposal aims to transform the existing site at Main & 7th from an underutilized asphalt parking lot to a dynamic urban park. The design forms a series of comfortable spaces, buffered from the traffic of Main St to provide an inviting environment that can adapt to the needs of the community.

EXISTING SITE CONDITIONS



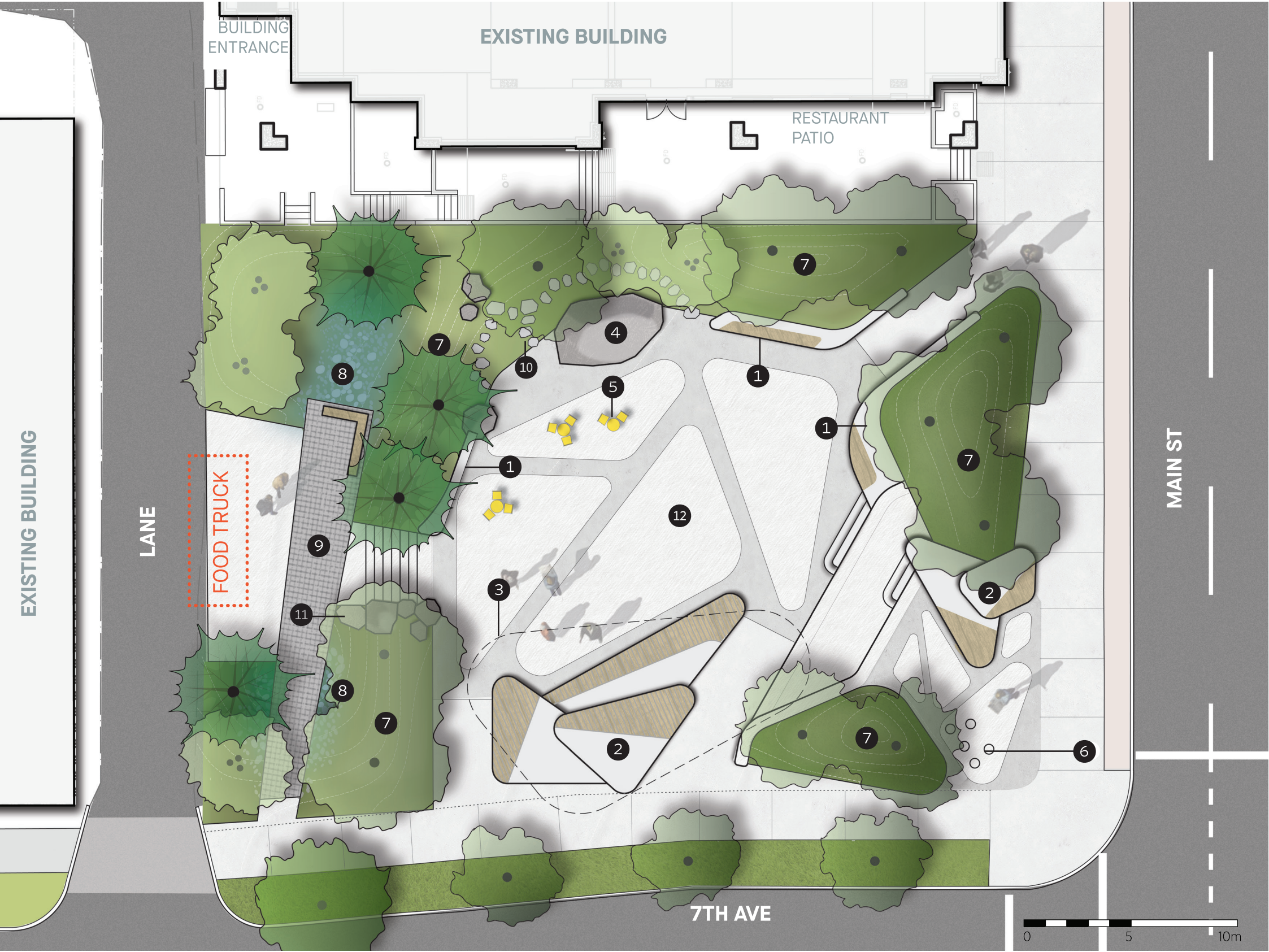
View from within site towards Mount Pleasant



View from Main & Kingsway Looking into Site



PROPOSED PARK DESIGN



Design Description

This proposal envisions the new park at Main St & 7th Ave as an adaptable, exciting park that is welcoming and comfortable for both people and wildlife. The proposed design creates a strong connection to the intersection of Main & 7th and a sculpted edge that provides a range in experiences.

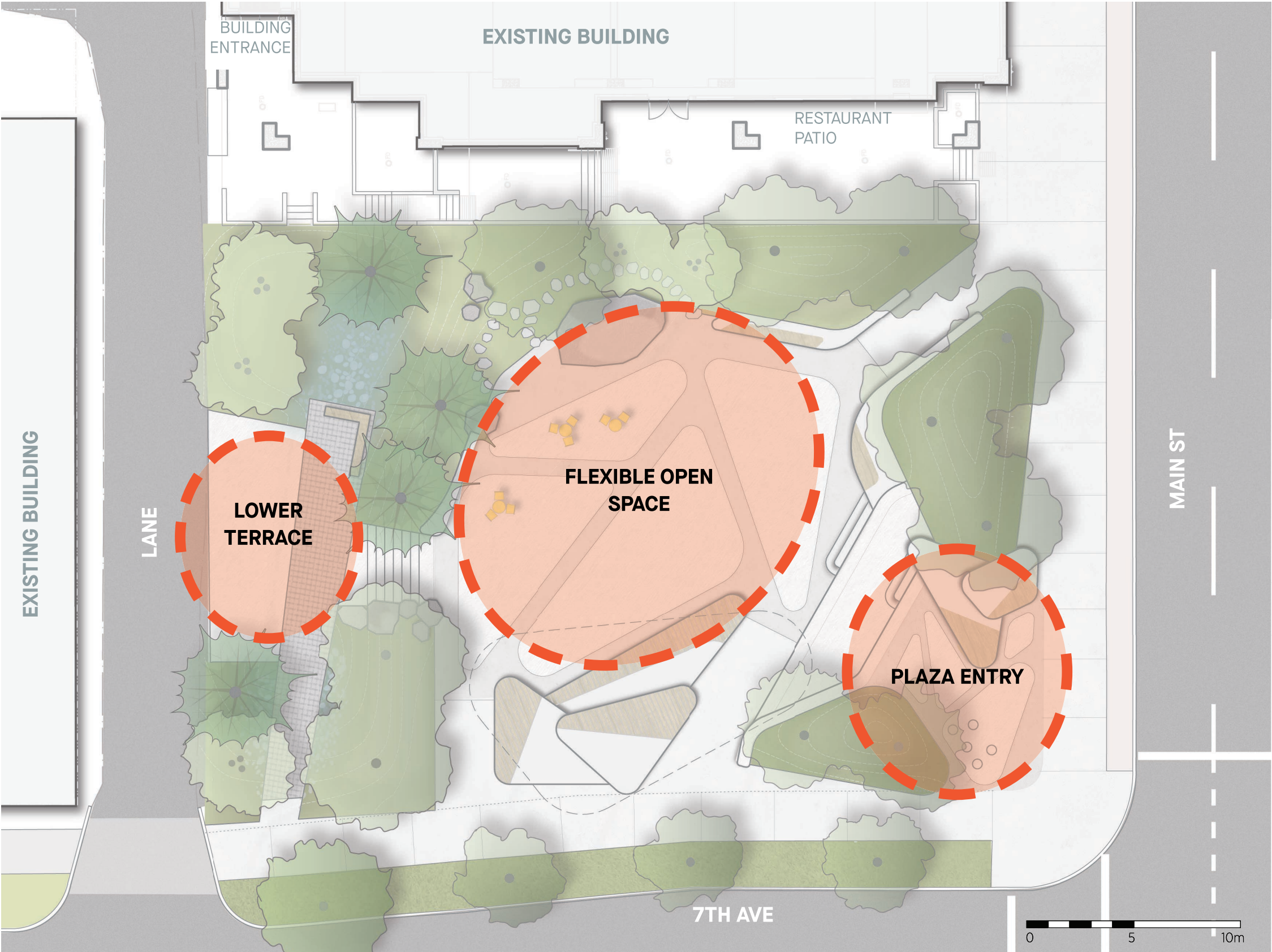
Managing a nearly three metre elevation change on site, the design utilizes built forms and topography with diverse plantings to shape a range of spaces, from intimate spaces to open areas flexible for events. A variety of seating elements are incorporated to allow people to gather and linger in groups or individually. Playful seating terraces and a canopy structure are juxtaposed against rich plantings with numerous trees to create a dynamic environment that embraces seasonal change.

LEGEND

- | | | |
|------------------------|---------------------|----------------------|
| 1 Seating Edge | 2 Seating Platforms | 3 Canopy Structure |
| 4 Feature Boulder | 5 Tables & Chairs | 6 Seating Feature |
| 7 Vegetated Mound | 8 Rain Garden | 9 Rain Garden Bridge |
| 10 Stepping Stone Path | 11 Boulder Edge | 12 Plaza Paving |



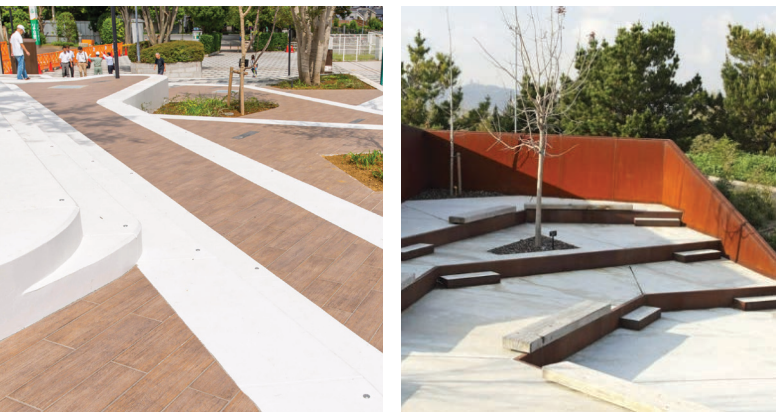
PRIMARY PARK SPACES



Flexible Open Space
A PLACE TO GATHER



Entry Plaza
MULTI-USE TERRACED FEATURE



Lower Terrace
RAIN GARDEN WITH CONNECTION TO LANE



SECONDARY PARK SPACES & SEATING



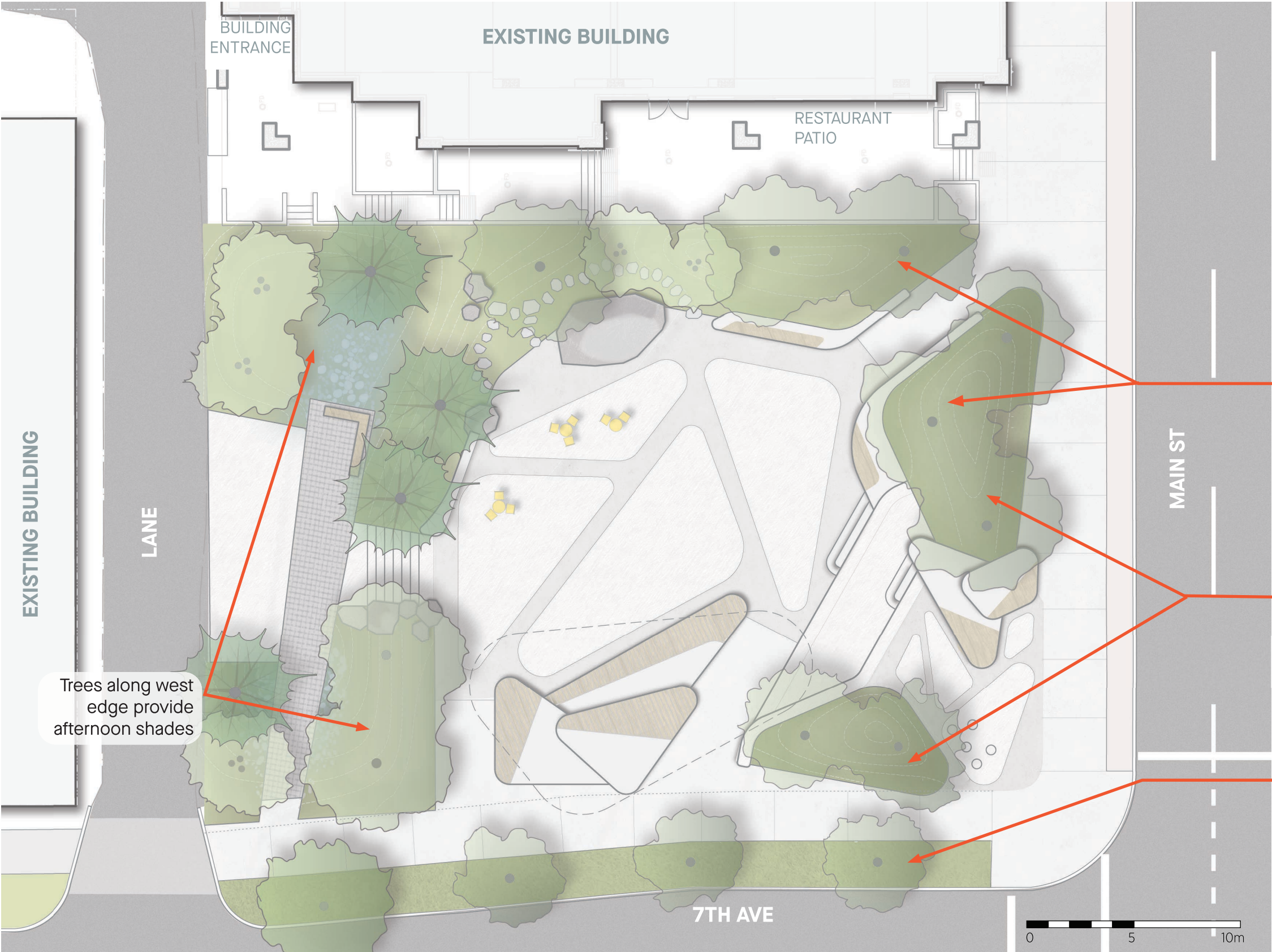
Providing Comfort

The site is designed to accommodate a range of seating typologies, including custom benches with backrests, seating platforms, and movable furniture. Integrated into the site, these seating elements create nodes for social activity to encourage individuals or groups to linger in comfort.

CHARACTER IMAGES



TREE STRATEGY



Tree Placement

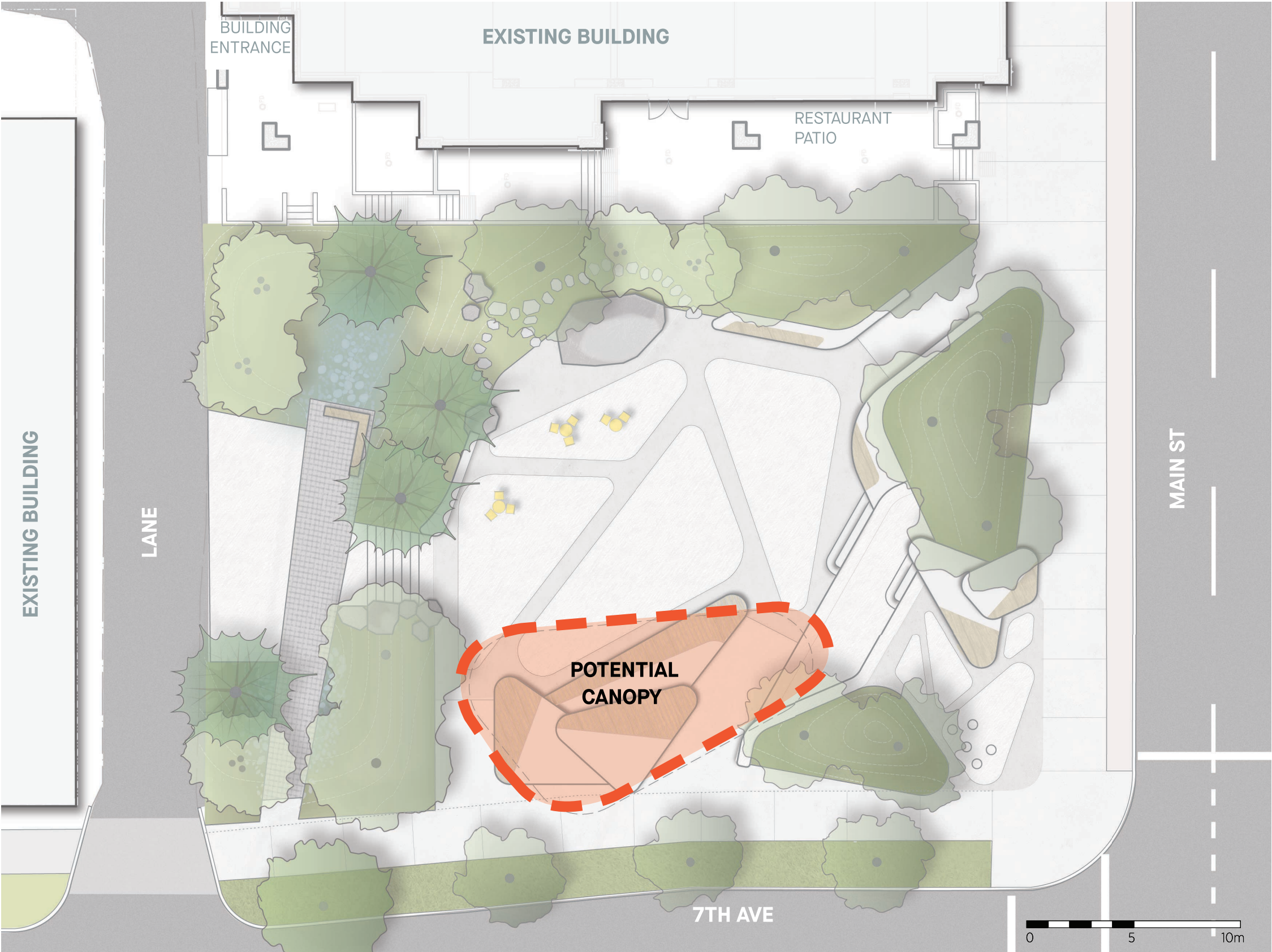
Numerous trees are placed throughout the site to provide shade, seasonal interest, and habitat for wildlife. Placed strategically, the introduced canopy will soften perimeter edges, while still allowing for key sightlines into the park. Mounded topography will provide adequate soil volume to allow for healthy and sizable trees as they grow to maturity. The established canopy will not only improve comfort for site users, but also help define the character of the park as a green oasis in the surrounding urban context.

Trees establish edge along main street and shade glare from reflected sun late in the day

Trees frame entry at Main Street & 7th Ave

Street trees introduced along 7th Ave

CANOPY STRUCTURE



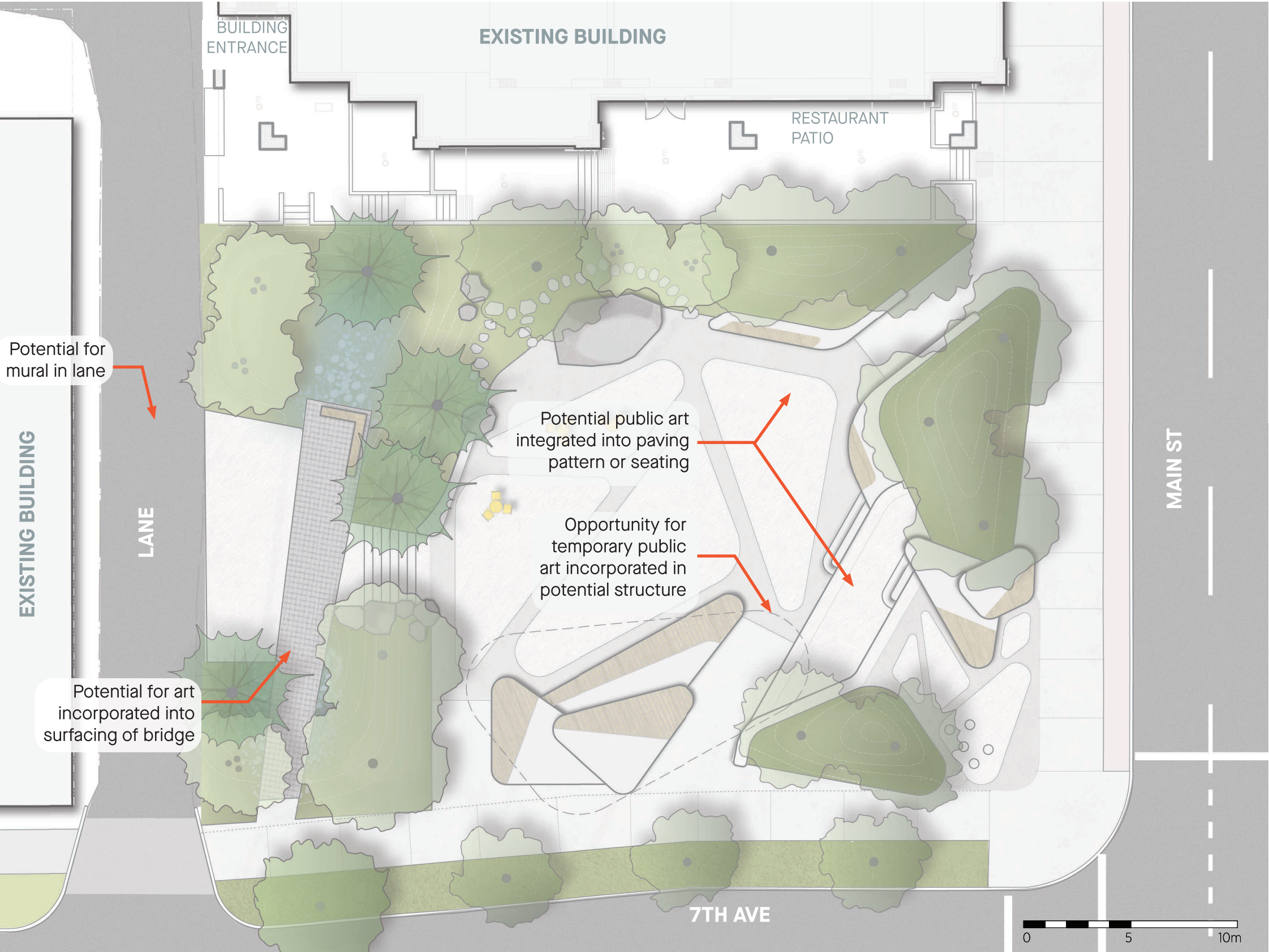
Potential Shelter Location

The proposed canopy location, peaking out towards 7th Ave, establishes a strong edge to the south of the park and will provide afternoon shade. Framed by proposed trees, the shelter is both visible from nearby adjacencies and integrated into the landscape. With seating decks below, the structure can animate performances or events, as well as provide comfort for informal daily use.

CHARACTER IMAGES



MATERIAL



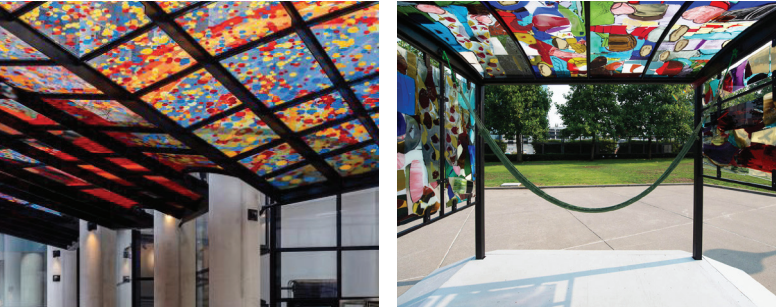
Materiality & Public Art

The proposed design holds potential for artist collaborations for the design of surface materials and site elements. Patterns designed with artists can be incorporated into paving and seating with surface treatments such as sand blasted concrete or perforated metal. The canopy structure as well can be surfaced with temporary murals or installations, reflecting the artistic and cultural context of the neighbourhood. Sustainable materials will be prioritized throughout the design refinement.

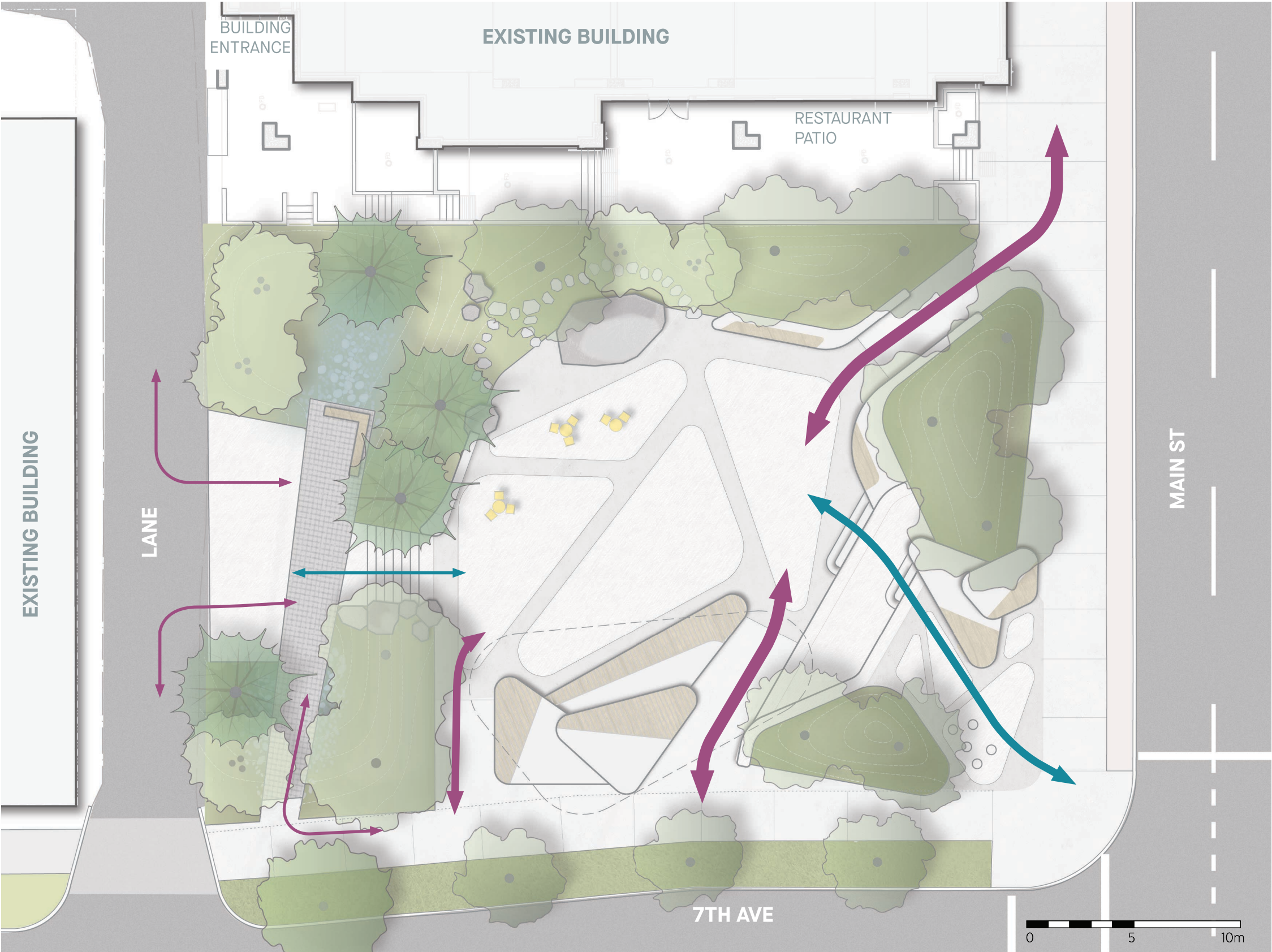
ART INTEGRATED IN MATERIAL PATTERNS



TEMPORARY ART ON CANOPY STRUCTURE



PEDESTRIAN CIRCULATION



Prioritizing Accessibility

The proposed site design provides accessible entry to all primary park spaces. Entrances located just west of Main & 7th and at the Northeast corner of the site are graded to a maximum 5% slope for ease of movement by all site users. A secondary circulation route across grade transitions is achieved with steps and seating platforms.

PRIMARY CIRCULATION

Accessible routes with maximum 5% slope

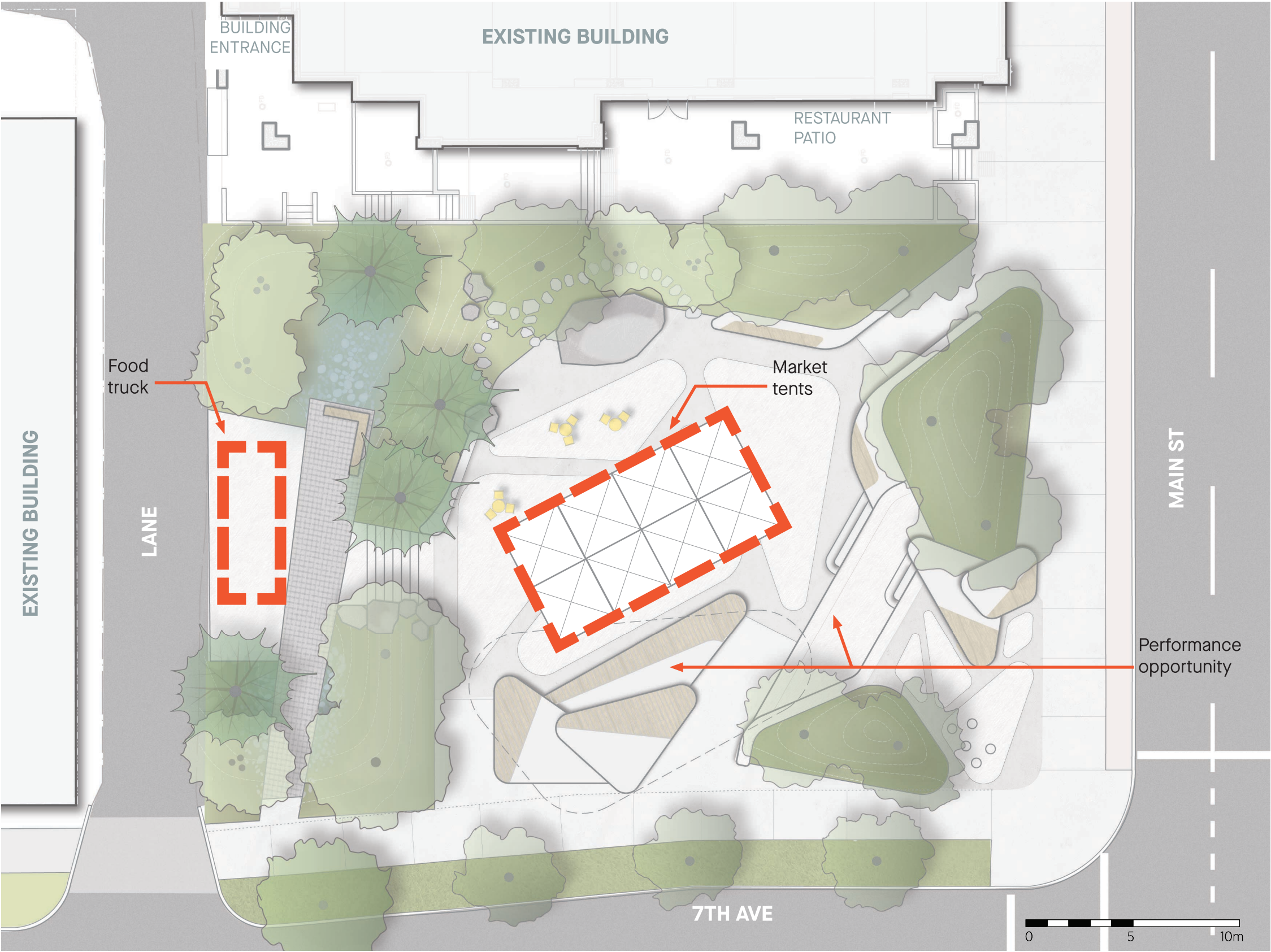
- Primary Route
- Secondary Route
- Tertiary Route

SECONDARY CIRCULATION

Routes with stair access

- Primary Route
- Secondary Route

EVENT LAYOUT



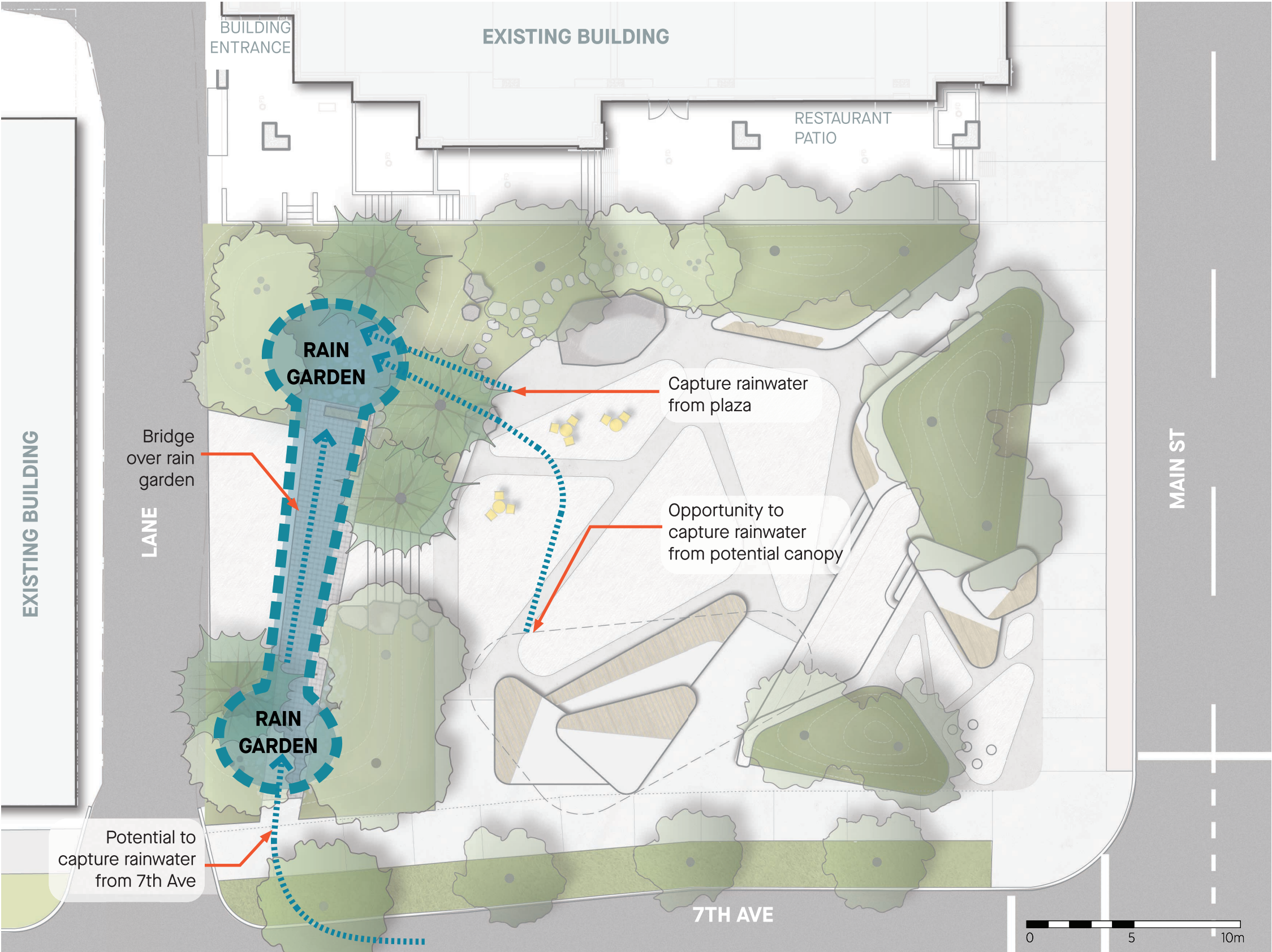
Accommodating Events

With a central open space and a variety of flexible seating elements, the site is designed to allow for a range of programming, including space for market tents and performances. The lower level, open to the lane, can accommodate food trucks and allow for activity to spill into the park during Mount Pleasant’s many street festivals.

CHARACTER IMAGES



STORMWATER MANAGEMENT



Capturing Rainwater

A sizable rain garden is sited along the west edge of the park, allowing rainwater to be captured from both the park plaza and the adjacent 7th Ave. This prominent feature, along with the introduced planting beds and numerous trees, will significantly improve stormwater retention onsite and reduce surface water runoff.

CHARACTER IMAGES



PLANTING STRATEGY

Creating an Urban Oasis

The proposed design is envisioned with a rich palette of vegetation, creating green landmark in the surrounding urban context. Lush layers of shrubs, perennials and trees will contrast the more structured built elements of the park. Introduction of ample trees will foster a comfortable and aesthetically engaging environment for site users. Prioritizing native vegetation, the introduced planting will also reference the region's important ecological history.

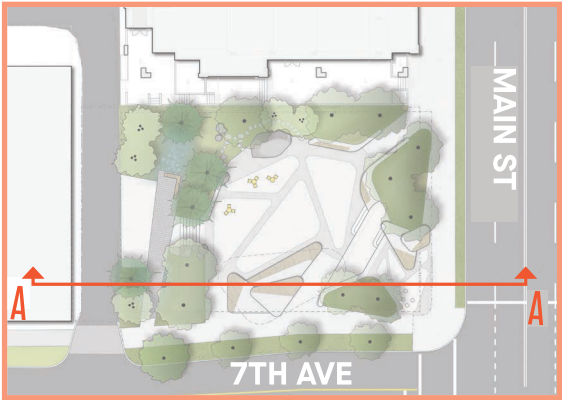
ESTABLISHING A SIGNIFICANT TREE CANOPY



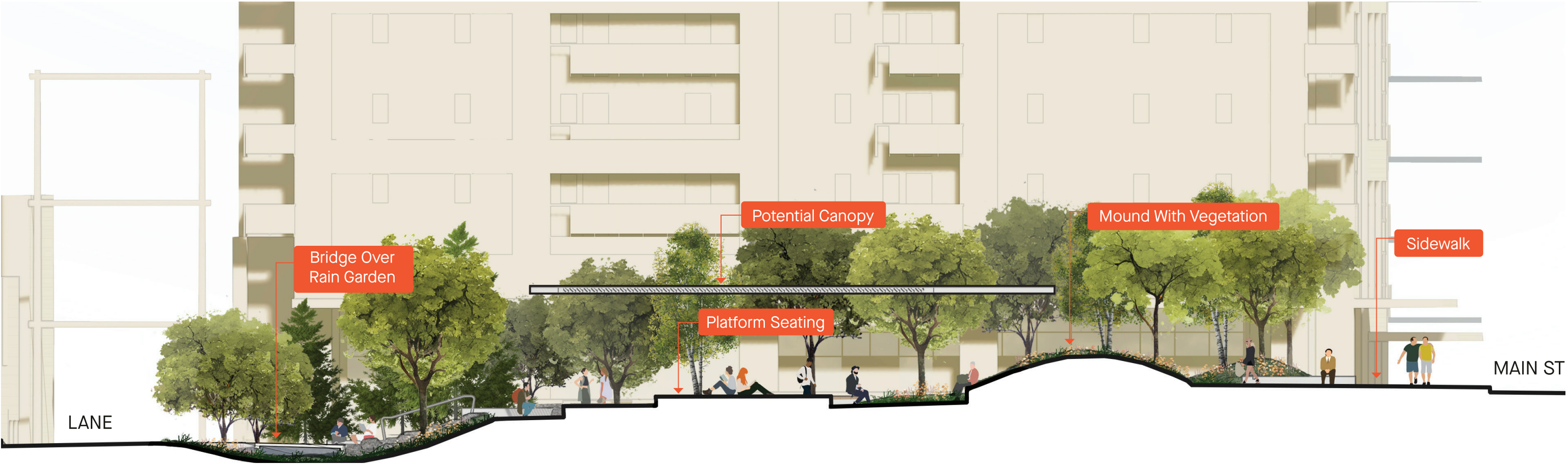
PRIORITIZING NATIVE VEGETATION



CONCEPT VISUALIZATION

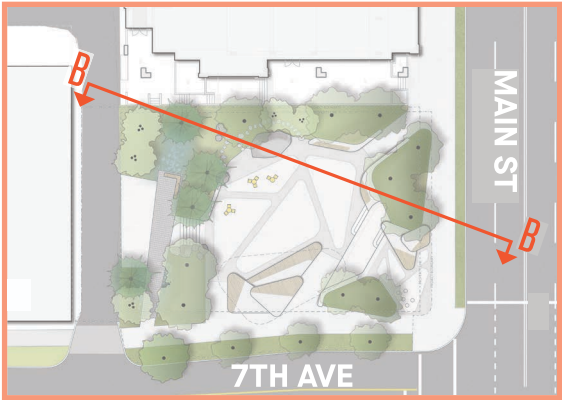


KEY PLAN

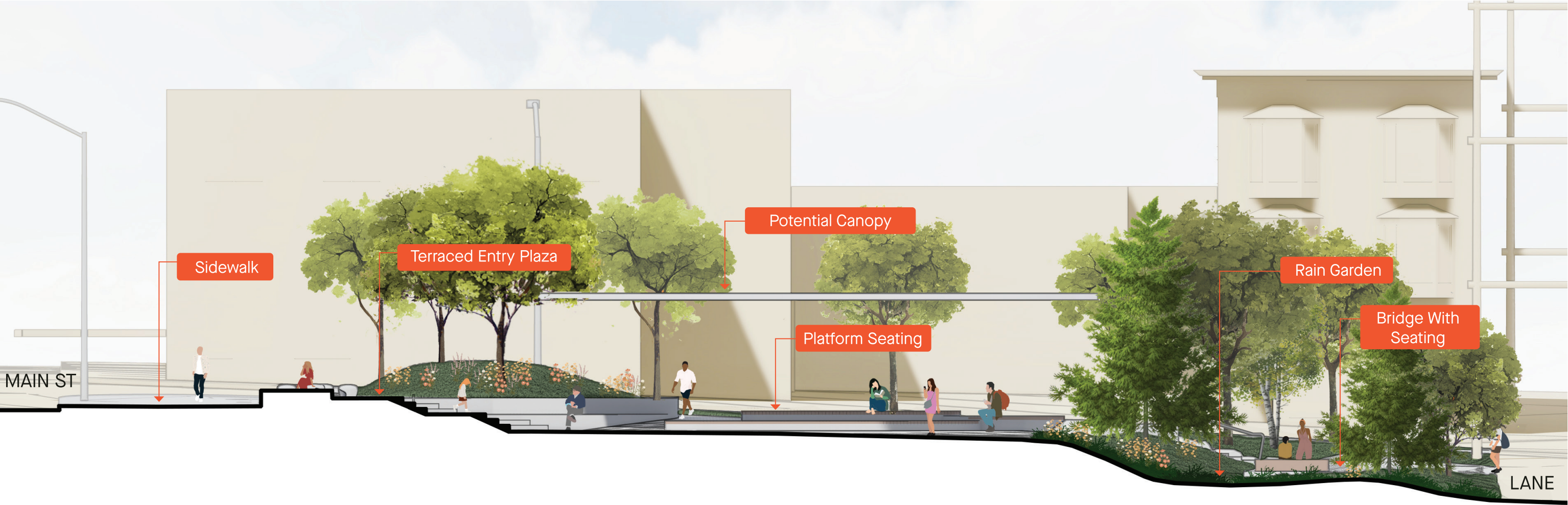


SECTION **A**
Looking North

CONCEPT VISUALIZATION



KEY PLAN



SECTION **B**
Looking Southwest

CONCEPT VISUALIZATION



MAIN & 7TH PARK
Mount Pleasant, Vancouver

ROUND 2 PUBLIC ENGAGEMENT
November-December 2022

SCALE
1:200 @ Tabloid



CONCEPT VISUALIZATION



MAIN & 7TH PARK
Mount Pleasant, Vancouver

ROUND 2 PUBLIC ENGAGEMENT
November-December 2022

SCALE
1:200 @ Tabloid



CONCEPT VISUALIZATION



MAIN & 7TH PARK
Mount Pleasant, Vancouver

ROUND 2 PUBLIC ENGAGEMENT
November-December 2022

SCALE
1:200 @ Tabloid



CONCEPT VISUALIZATION

