

A NEW PARK AT MAIN & 7TH

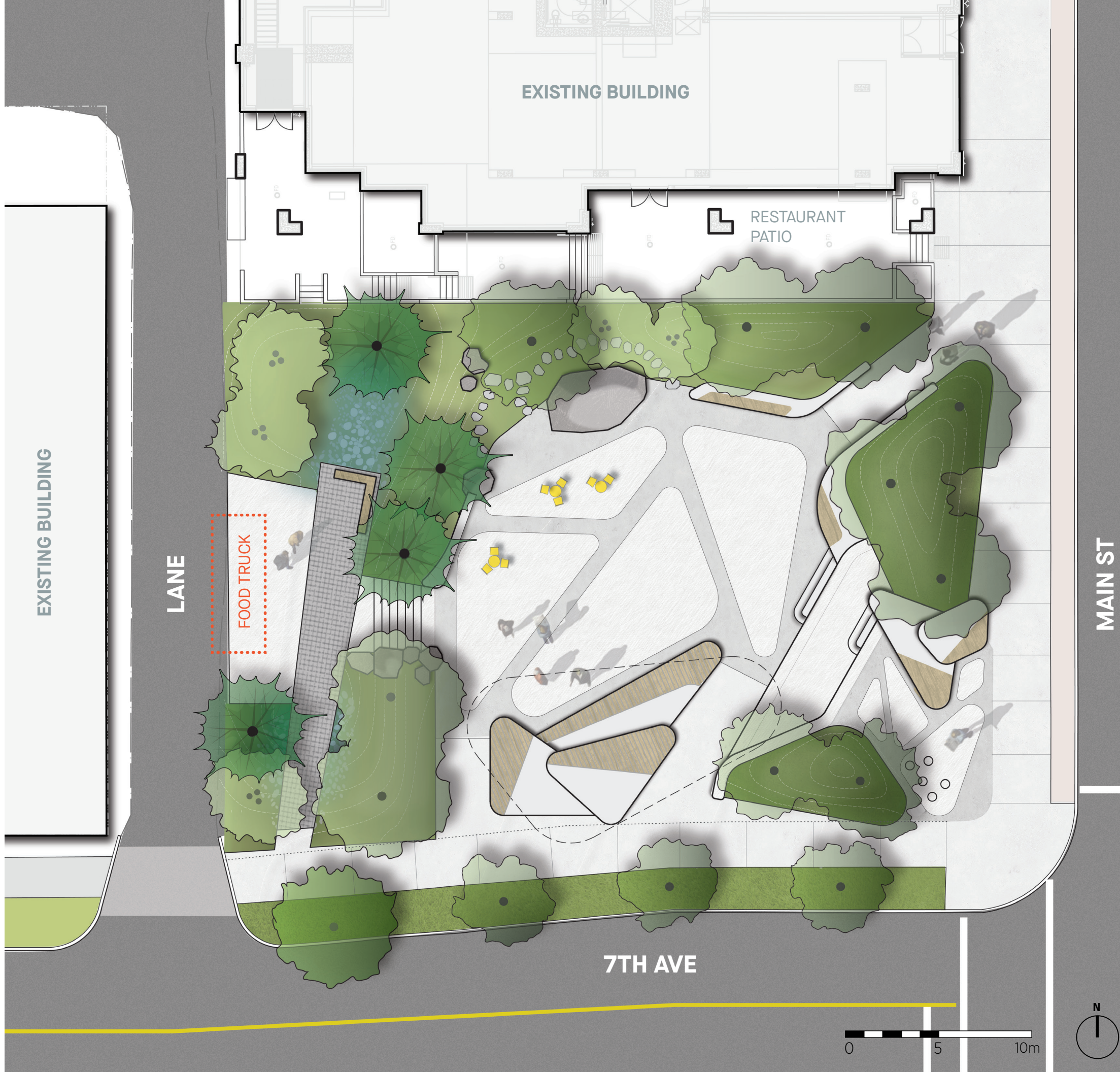
MOUNT PLEASANT, Vancouver

ROUND 2 PUBLIC ENGAGEMENT



SUMMARY REPORT

FEBRUARY 2023



PHASE 2: PUBLIC ENGAGEMENT

From Nov 29th to Dec 21st 2022, the Vancouver Park Board hosted the second phase of engagement to receive feedback from the public on preliminary design concepts for the new park at Main & 7th. Design concepts were based on feedback received in Phase 1.

We interacted with over 1,400 people through a public engagement event and online survey on the City of Vancouver's 'Shape Your City' engagement platform. Participants provided responses and ideas that will inform park concept design revisions, detailed design and delivery.

Residents were notified through mailout postcards, social media and posters displayed around the Mount Pleasant neighbourhood.

Separate to the public engagement process, ongoing conversations with the Musqueam, Squamish and Tsleil-Waututh Nations to discuss the park and its concept design are continuing.

Feedback received from the Phase 2 engagement is summarized in this report.



In summary, the result of the Phase 2 public engagement largely indicates enthusiasm and support for the provided concept design.

A majority of surveyed individuals expressed the park meets or exceed their expectations and aligns with identified project principles.

WHO WE REACHED

190+ survey responses

online + hardcopy



1,400+ visitors

to the project webpage
shapeyourcity.ca/main-7th-park



9,700 postcards

delivered across surrounding project area



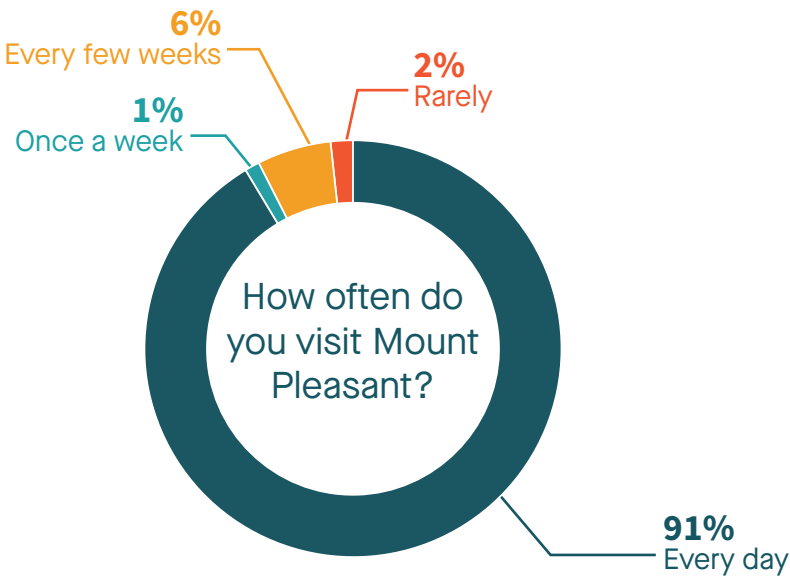
10,200+ reached

through social media



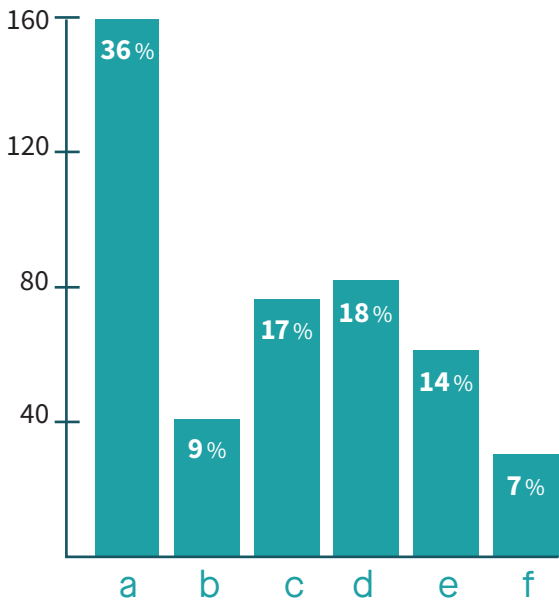
WHO WE HEARD FROM

To understand who we heard from during this round of engagement, we asked the following set of questions.

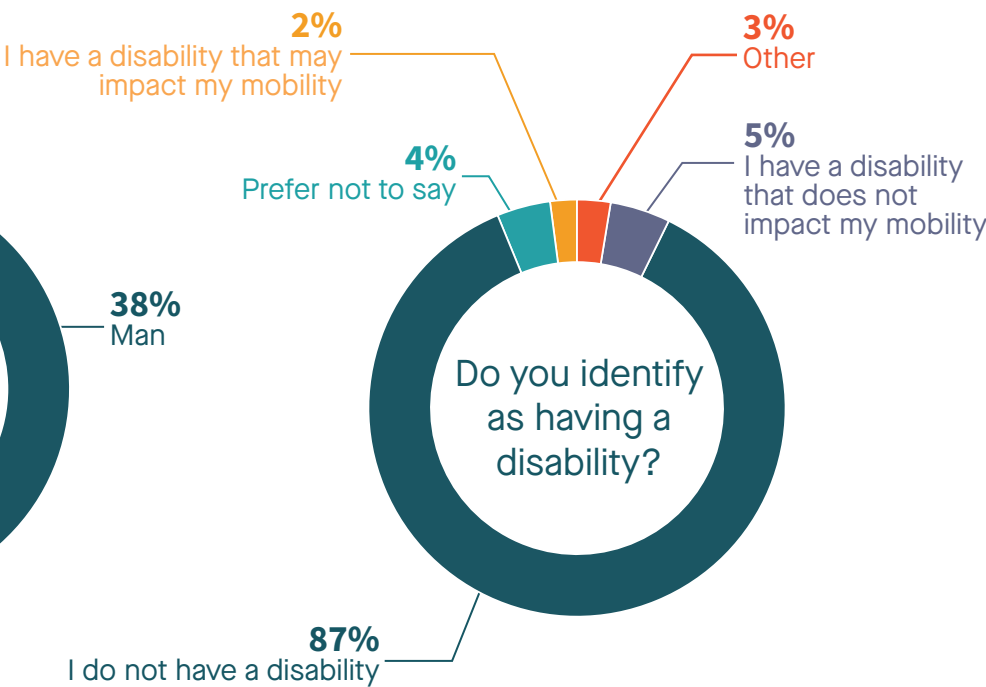
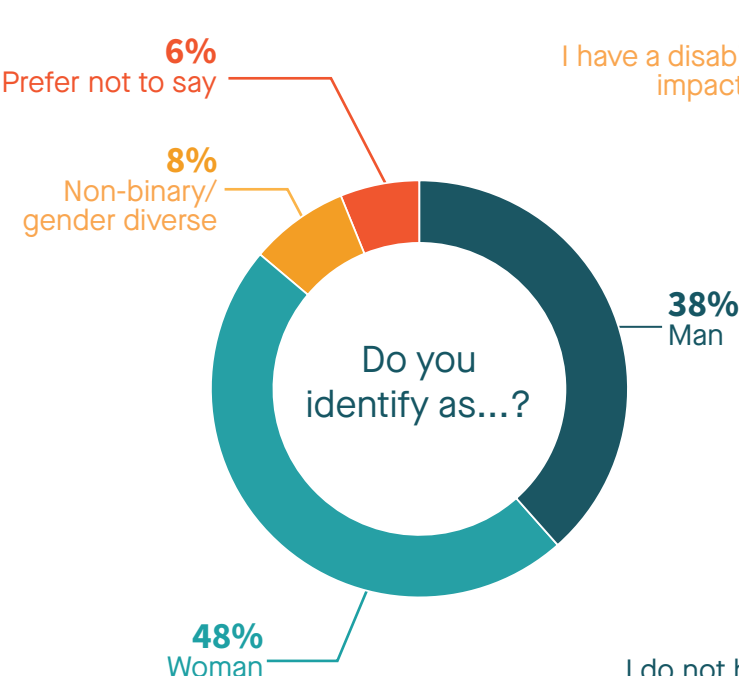
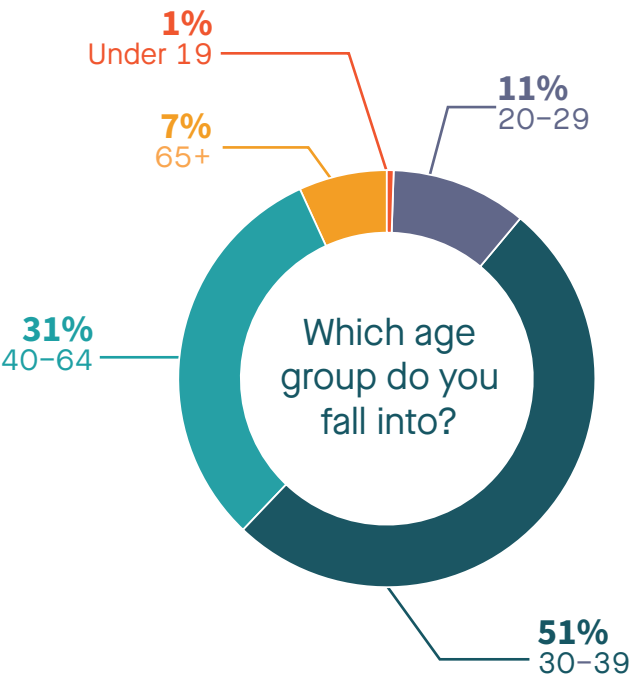
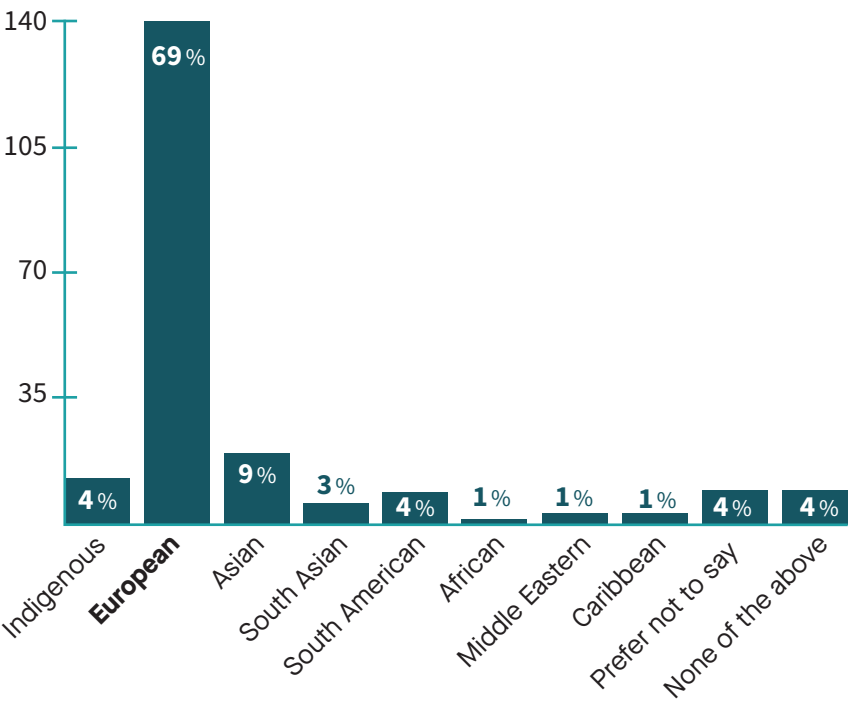


Why do you visit the neighbourhood?

- a. I live there
- b. I work there
- c. Meet friends & family
- d. Dining & entertainment
- e. Shopping
- f. To view murals



What do you consider to be your ethnic origin or that of your ancestors?



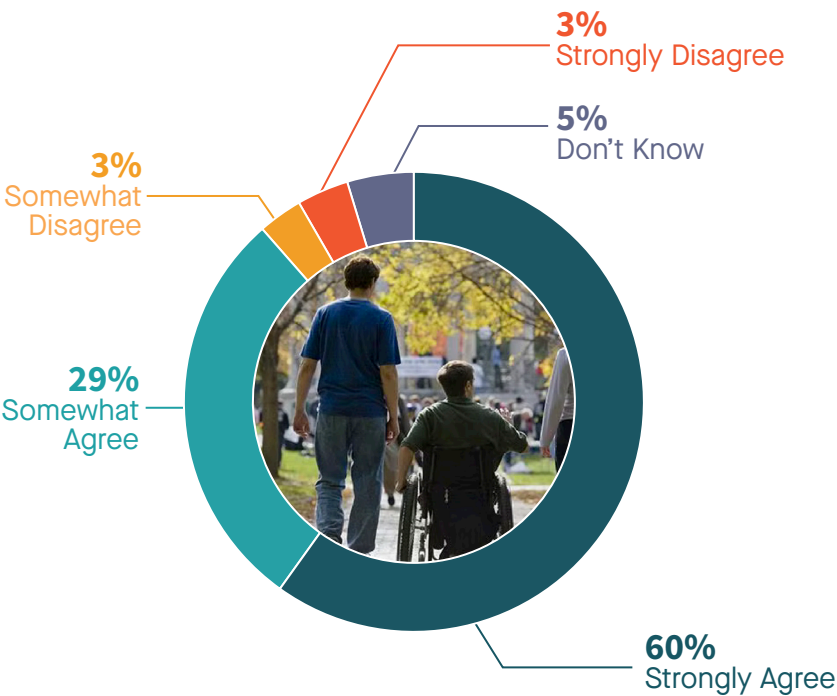
WHAT WE HEARD

The proposal envisions the new park at Main Street and 7th Avenue as an adaptable, exciting park that is welcoming for both people and wildlife.

To better understand whether we are meeting the community’s expectations, we asked the respondents to indicate their level of agreement with the following statements to help us refine the design.

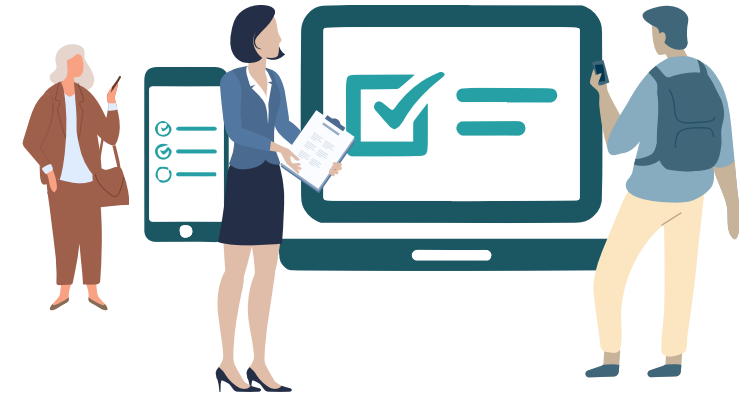
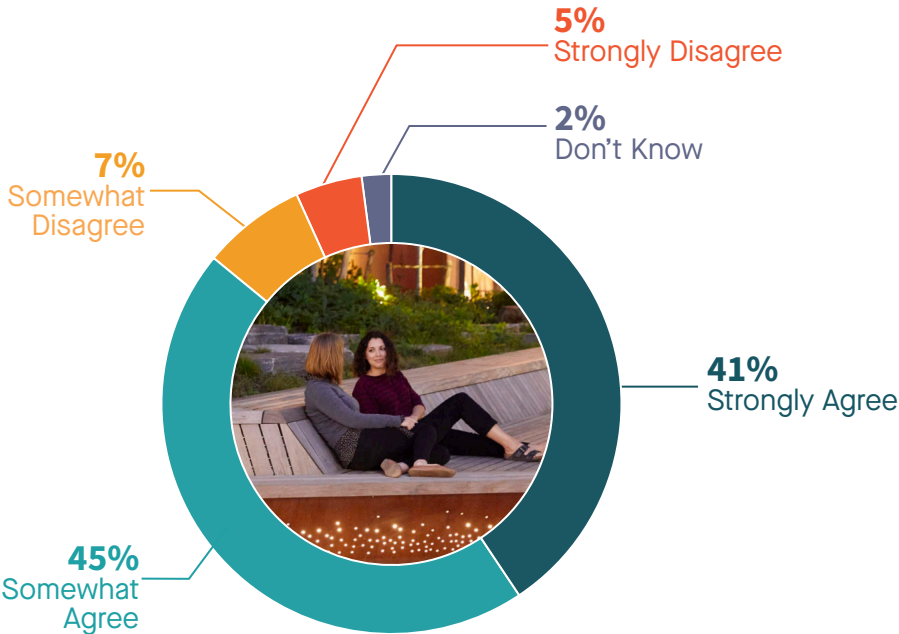
- 1. The proposed park design provides an accessible environment with entrances and pathways that are well connected for people of all abilities.

89% of respondents strongly or somewhat agree that the proposed park design provides an accessible environment.



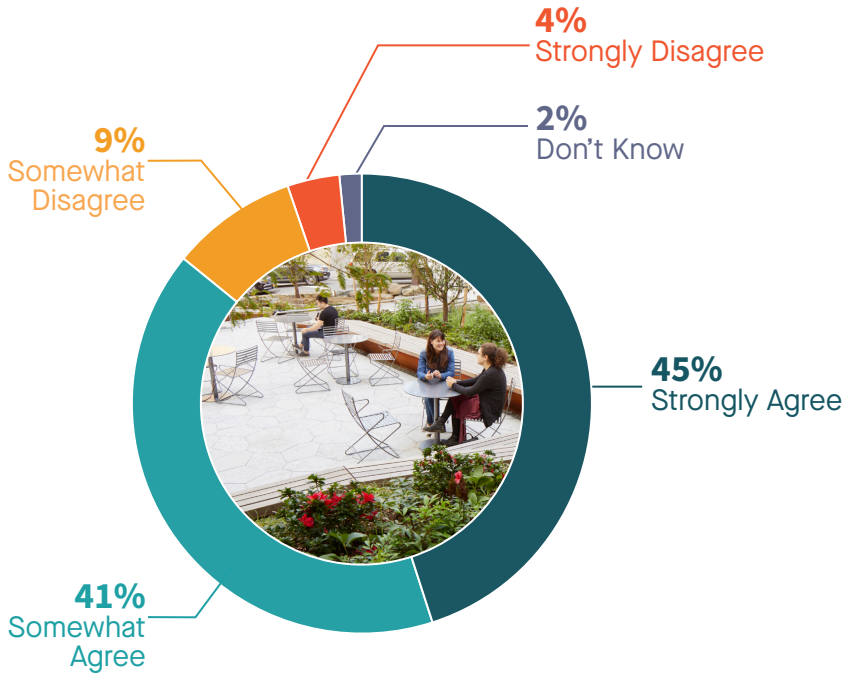
- 2. The proposed park enhances comfort for people throughout the year by incorporating weather protection, noise mitigation, and a variety of seating opportunities.

86% of respondents strongly or somewhat agree that the proposed park enhances comfort for people.



- 3. The proposed park design incorporates a range of comfortable spaces, including larger open areas for gathering, and quieter, more intimate spaces for individuals, families and small groups.

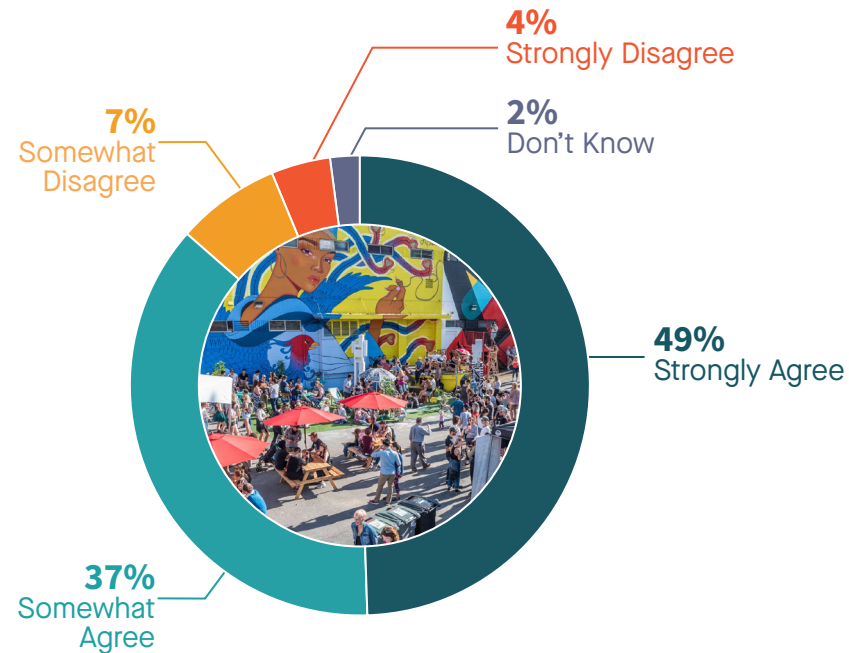
86% of respondents strongly or somewhat agree that the proposed park design incorporates a range of comfortable spaces.



WHAT WE HEARD

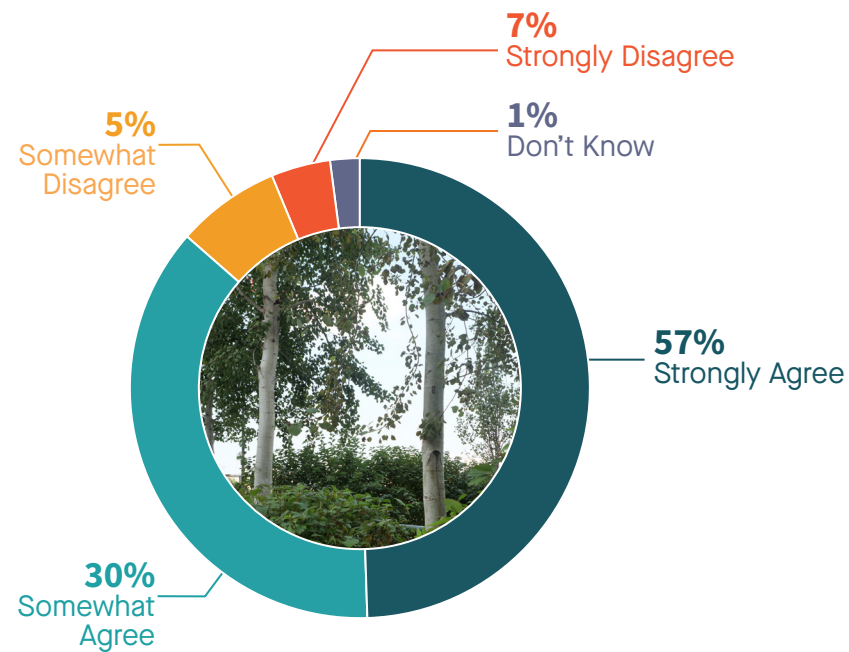
4. The proposed park is flexible and adaptable for a variety of uses, including community events and performances throughout the year.

86% of respondents strongly or somewhat agree that the proposed park is flexible and adaptable for a variety of uses.



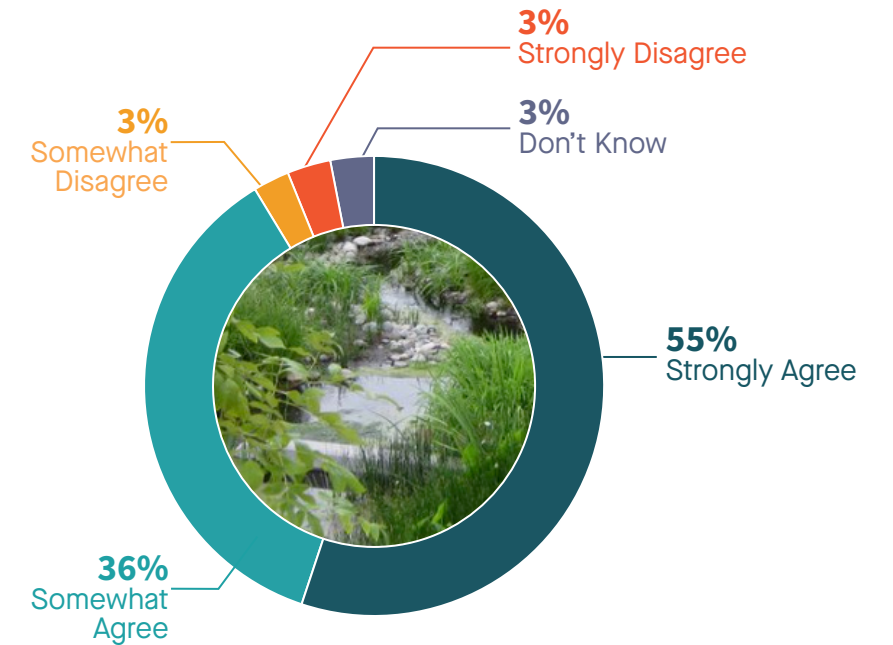
5. The proposed park adds valuable green space to the neighbourhood, with lots of trees and large planting beds.

87% of respondents strongly or somewhat agree that the proposed park adds valuable green space to the neighbourhood.



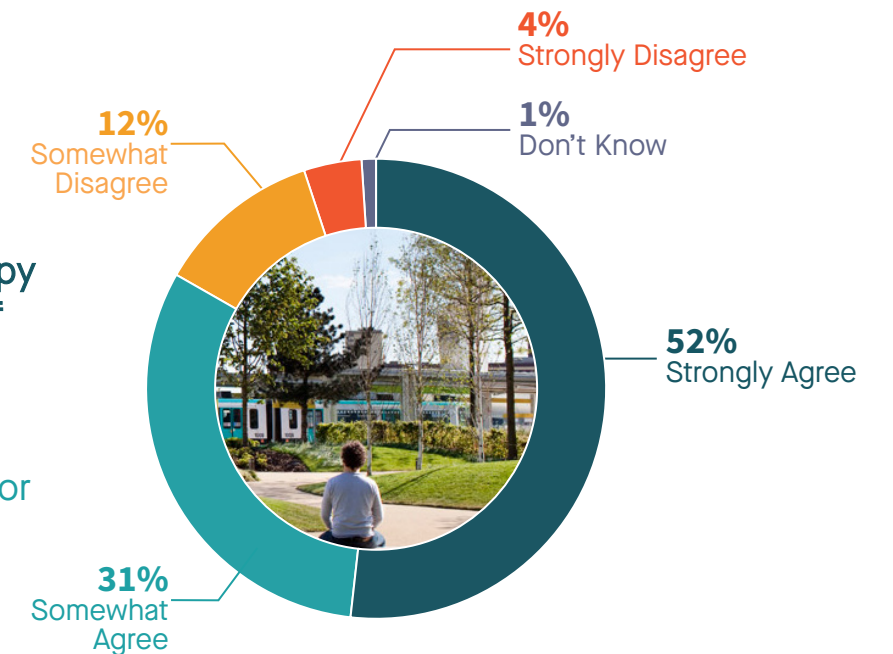
6. The proposed park prioritizes sustainability with the large rain garden, local and permeable material selections and large areas of planting.

91% of respondents strongly or somewhat agree that the proposed park prioritizes sustainability.



7. The proposed park creates an inviting street presence within the Mount Pleasant neighbourhood, with its canopy of green trees and mounds of colourful planting around the plaza area.

83% of respondents strongly or somewhat agree that the proposed park creates an inviting street presence within the Mount Pleasant neighbourhood.



WHAT WE HEARD

Digging deeper into the themes from the open-ended question and the 141 responses, we heard the following feedback.

This feedback will be taken into consideration in the concept refinement phase.

“Love it all - the accessibility, the inclusion of rainwater and native plants,...”

“Will the native plants be an attraction for pollinators? We need to help the bees.”

“...If you want people to go to the park, make it easier to cross the street.”

“I like it, my only concern would just be the traffic noise from Main...”

“...The canopy should be mandatory, not a maybe. There is not enough shade there...”

1. Green space & planting

Keywords: greenery, green, trees, plants, grass, shrubs, natural, ecosystem, raingardens, pollinator



- Many of responses are positive or in agreement with the amount of green/planted space shown in the concept.
- Some respondents would like to see more “greenery”, trees and/or grassy areas.
- A few respondents have other concerns. For example:
 - Tree selection is mentioned a few times either in relation to allergies, for blossoms or to avoid species that cause stickiness on the ground.
 - One concern around drought tolerance of plant selection.

2. Canopy, rain & shade

Keywords: canopy, shade, rain protection, rain cover, covering



- Many of the responses that mention canopies are positive or in support of a constructed covering.
- Some responses express concern, primarily with potential encampments.
- Many respondents mentioned the importance of shade in the park, either through the use of a canopy or through the planting of trees and other vegetation.

3. Pedestrian flow & accessibility

Keywords: road crossing, crosswalk, accessibility, accessible, safety, danger



- Many respondents requested a direct route to the park via a dedicated pedestrian crosswalk on Main St.
- A few respondents mentioned the need for the park to be accessible.
- A few were concerned about safety in relation to traffic on the neighbouring streets.

4. Noise reduction

Keywords: noise, traffic, loud concerts, music, performance, DJs



- Many responses refer to concerns around traffic noise and want to see some type of sound barrier for the park.
- A few comments are related to noise created by loud concerts and DJs, and don't want the park to provide space for these types of events.
- Respondents are primarily concerned that loud traffic noise around the site will make the park space uninviting and - ultimately - unsuccessful.

5. Dog amenities

Keywords: dogs, dog park, off-leash area, dog-friendly



- Generally, respondents are concerned with the lack of consideration for dogs or permanent dog parks in the wider area.
- Some respondents find this topic a high priority as the neighbourhood is growing rapidly, and so is the number of dogs.
- A few respondents are specifically concerned with dog waste management in the park.

6. Play areas for children

Keywords: play area, playground, play structures, children



- **9** out of the **10** responses refer to a lack of play structures or a desire for more informal play opportunities.
- One response mentions that the rocks in the rain gardens will be a fun element for children.
- One respondent mentioned the need for a playground in the park to serve the many families with children in the area.

7. Artistic elements & public art

Keywords: art, artistic, artwork, public art, creative, First Nations, aboriginal, native, mural



- A few respondents mentioned the need for the park design to reflect the Mount Pleasant neighbourhood, either through the use of local artwork or through the use of materials that are specific to the area.
- Some respondents mentioned the desire for artistic elements or public art in the park, such as murals or sculptures, to reflect the high concentration of artists in the area.

WHAT'S NEXT?



The project team has reviewed all responses and we will do our best to accommodate as much of the feedback and suggestions as we can. The design concept will be presented to the Park Board for approval in spring 2023.

Once Board approval has been received, we will launch into the design development and detailed design phase.

Construction is anticipated to begin in fall 2023.



Stay connected to the project!

- **visit the project webpage** shapeyourcity.ca/main-7th-park
- **subscribe for updates** (blue button, bottom of project webpage)
- **follow us on our socials** [@vanparkboard](#)  [@parkboard](#) 
- **further questions?** email main-7-park@vancouver.ca