

# W.C. Shelly Park expansion

## What’s happening?

W.C. Shelly Park is a small (0.3ha) neighbourhood park located one block north and one block west of Commercial and Broadway in the Grandview-Woodland area.

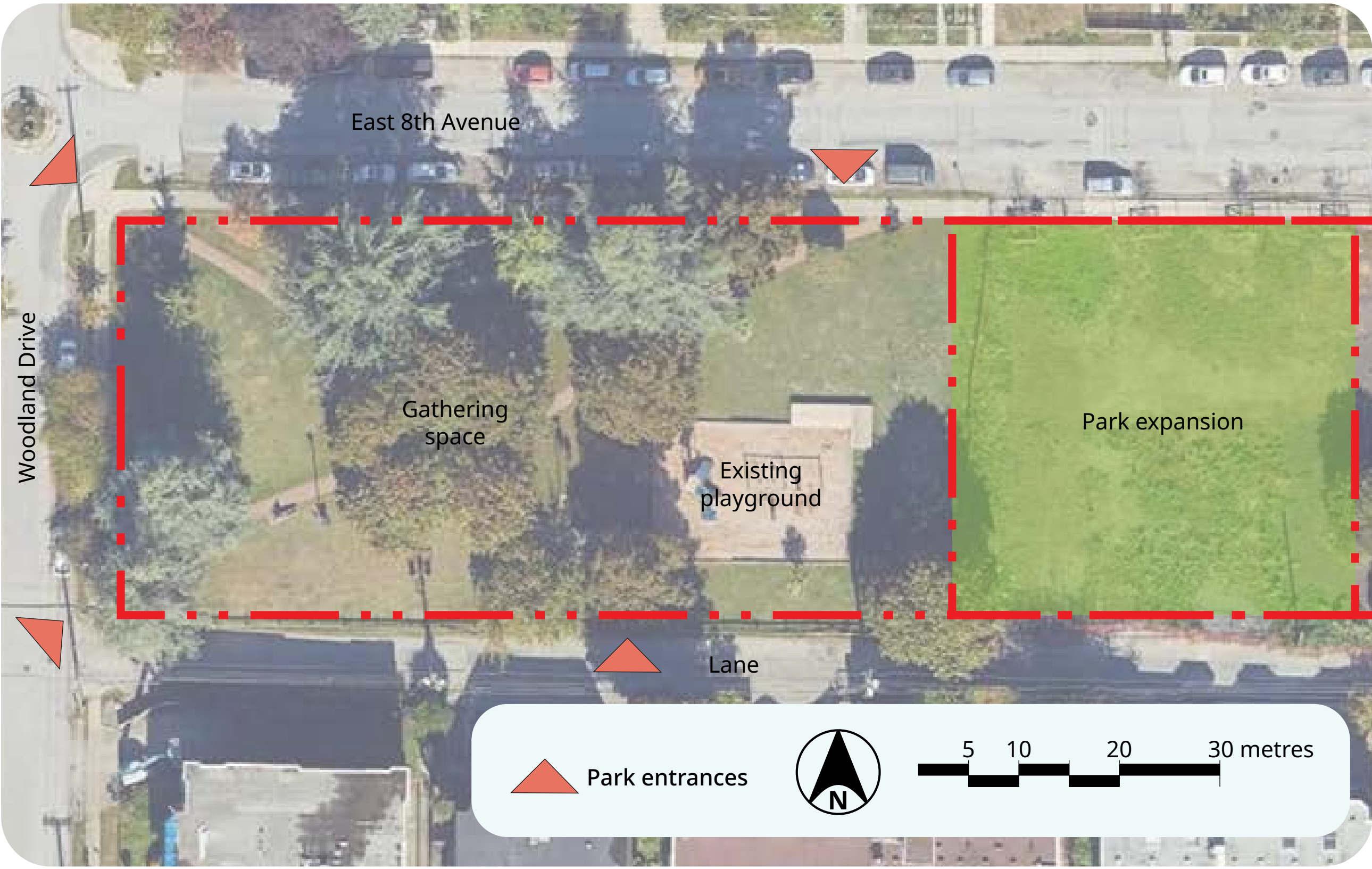
We are expanding the park to meet growing demand for park space. This will introduce new programs to the park and renew existing assets. We are seeking your feedback and input on the future vision of the park.

## Project location

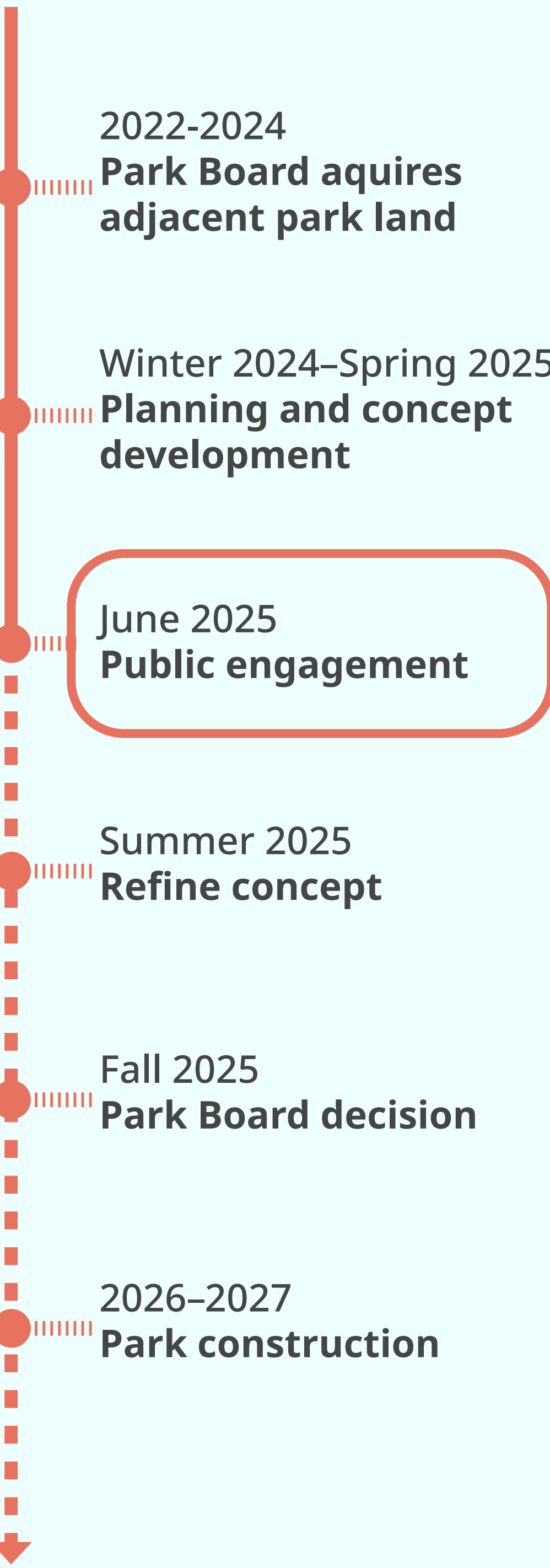
How does the park fit in with the neighbourhood?



## Existing conditions



## Project timeline



This work takes place on the unceded territories of the xʷməθkʷəy̓əm (Musqueam), Skwxwú7mesh (Squamish), and səliłwətał (Tsleil-Waututh) Nations.



# W.C. Shelly Park expansion

## What we heard previously

The project principles and draft concept plan reflect community needs identified through recent Park Board and City engagement projects, meetings with community organizations, as well as feedback submitted to 311.

## Project principles

Based on what we have heard in past engagement, along with technical requirements and relevant Park Board policies, we have developed these draft project principles. These principles help clarify what should be achieved with the expansion of the park.

### Encourage community interactions and recreation

- Keep open spaces for gathering and informal play
- Create fun places for children, families, and dogs
- Provide spaces for neighbours to take ownership of the park

### Encourage an inclusive and safe space

- Make it possible for kids of all abilities to play in the playground
- Provide activities that foster a lively park throughout the day

### Protect and enhance natural elements

- Add trees canopy and protect existing trees
- Use the landscape to filter stormwater and enhance natural habitats

## City and Park Board policies

The proposed design for W.C. Shelly Park expansion responds to the following city-wide strategies:



### VanPlay

The nearby area is identified as having a small urban canopy and high demand for accessible recreation. The park expansion will add new trees, while we retain the existing mature trees on the original park site. The playground will also be expanded and upgraded with accessible play features.



### People, Parks, and Dogs Strategy

Grandview-Woodland and Mount Pleasant are under-served areas for off-leash dog parks. Through 311, neighbours near W.C. Shelly Park have told us that they want a space for off-leash dog activity here. To address this, we will be dedicating most of the park expansion to a new off-leash dog area.



### Local Food Action Plan

W.C. Shelly Park is within a medium priority area for new local food assets. We will be dedicating some of the park expansion area as a communal food and culture garden to address this need. This will provide space for local food growing and opportunity for cultural and ceremonial plant harvesting.



# W.C. Shelly Park expansion

## Proposed concept plan

The future park design, with the expansion to the east, will include spaces that are fun and welcoming to all.

### Flexible space

We would keep the existing lawn and add more seating and picnic tables. We would move the centre gathering area benches to the west end to create clear and open paths through the park.

### Playground expansion

In addition to expanding the playground, proposed upgrades focus on accessibility improvements, including adding rubber surfacing and introducing accessible play equipment.

### Rain garden

A rain garden would separate the playground and new off-leash dog area. The rain garden will filter stormwater and enhance local habitat while offering a learning opportunity for kids as they watch stormwater in action.

### Off-leash dog area

A new dedicated space for off-leash dogs will help us meet the needs of dog owners in the Grandview-Woodland and Mount Pleasant neighbourhoods.

### Food and culture garden

The remaining expansion area would be dedicated to a new communal food and culture garden. We would work with community groups to promote communal stewardship of the space.



## Proposed park features

- |                         |                           |
|-------------------------|---------------------------|
| 1 Flex space            | 4 Rain garden             |
| 2 Playground (expanded) | 5 Food and culture garden |
| 3 Park entry plaza      | 6 Off-leash dog area      |





# W.C. Shelly Park expansion

## Proposed park features

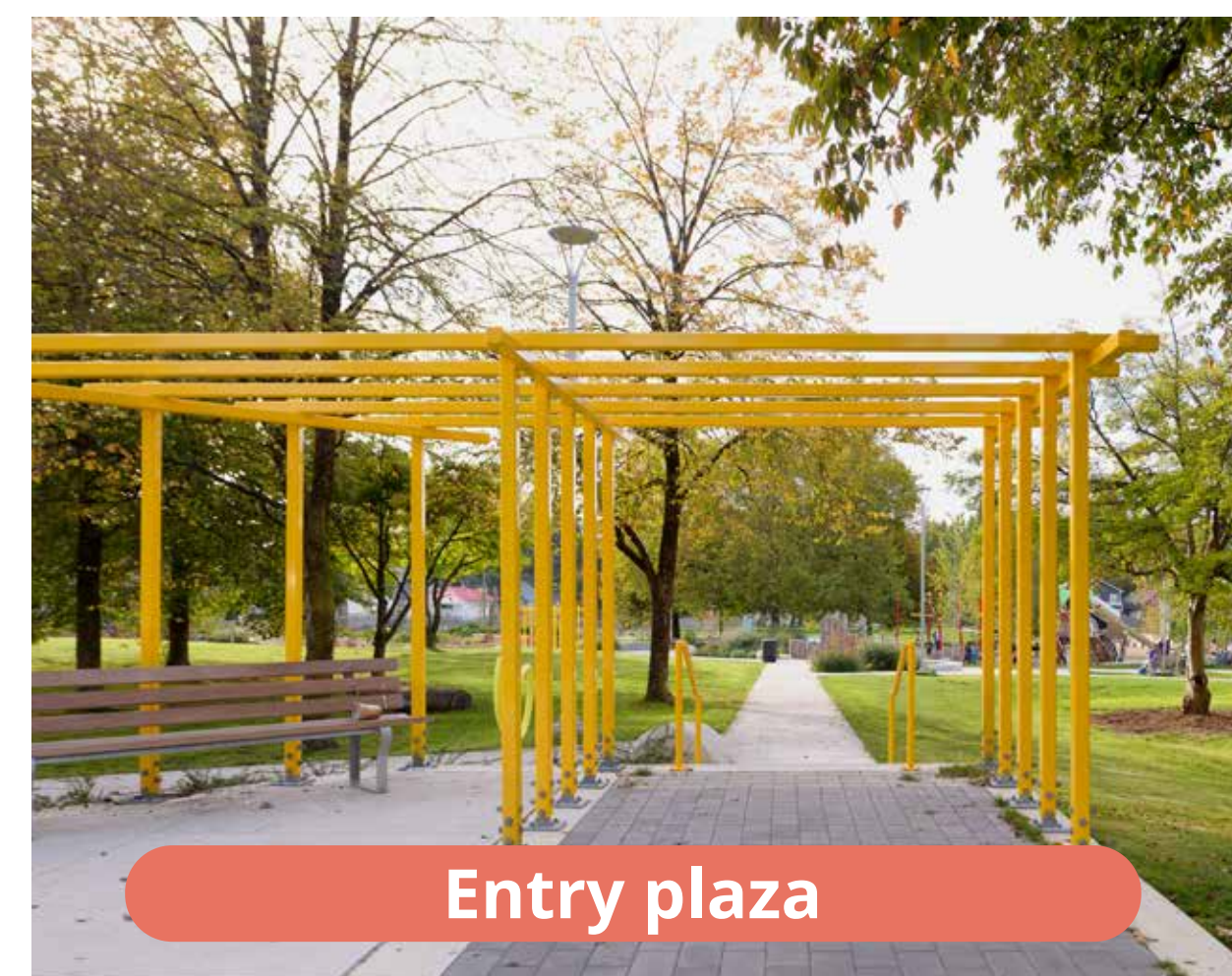
1. **Flexible space:** keeping informal lawn areas to allow for informal recreation, and adding new benches and tables.
2. **Playground expansion:** expanded area, inclusive play equipment, benches, and accessible rubber surfacing.
3. **Park entry plaza:** formal paved area with benches and picnic table.
4. **Rain garden:** capture stormwater with planting, river rocks, boulders, and logs.
5. **Food and culture garden:** accessible shared planting plots, edible and medicinal plants, potting table, and composter.
6. **Off-leash dog area:** fencing, accessible path, engineered wood fibre surfacing, waste bins, benches, and agility equipment.



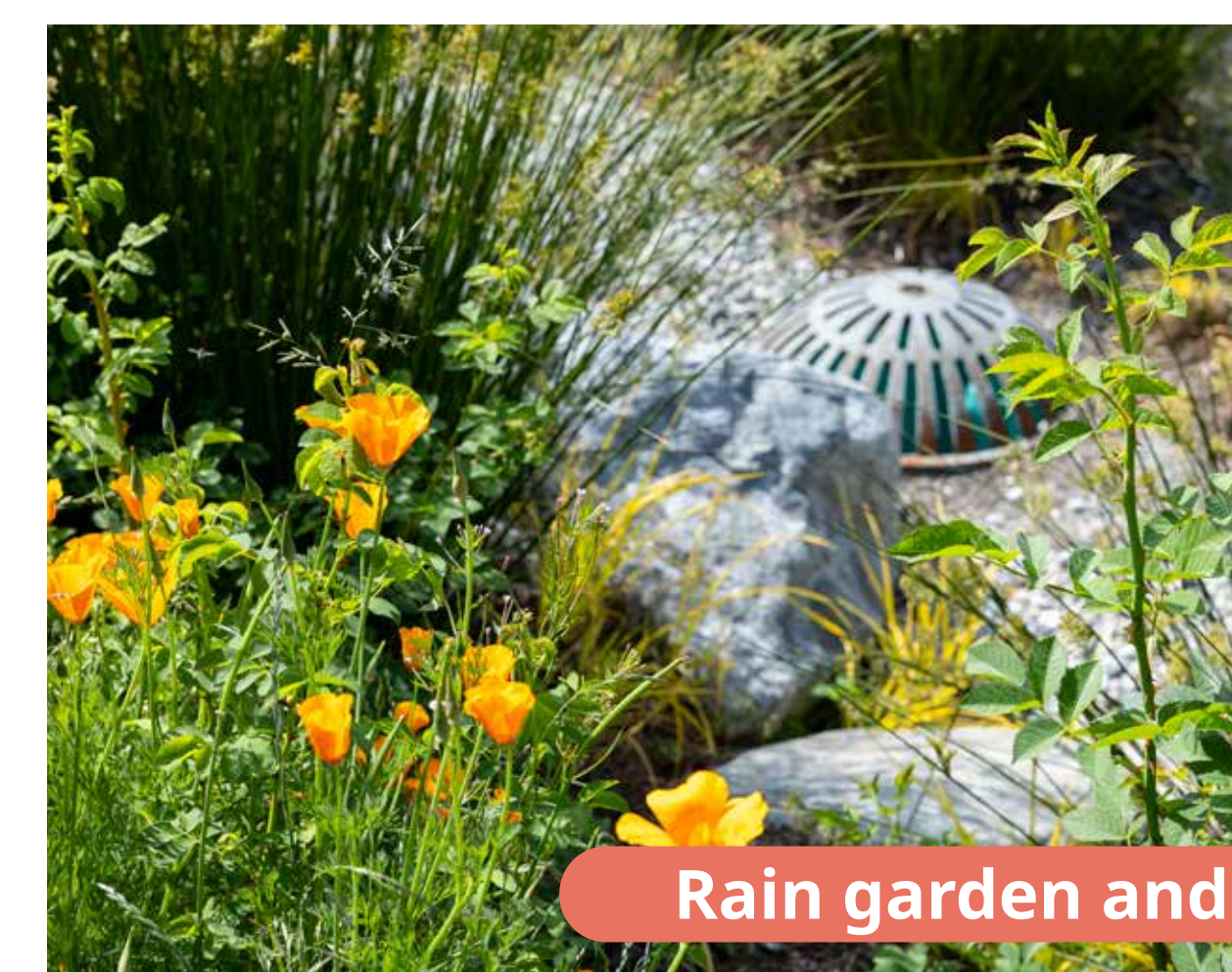
Flexible space



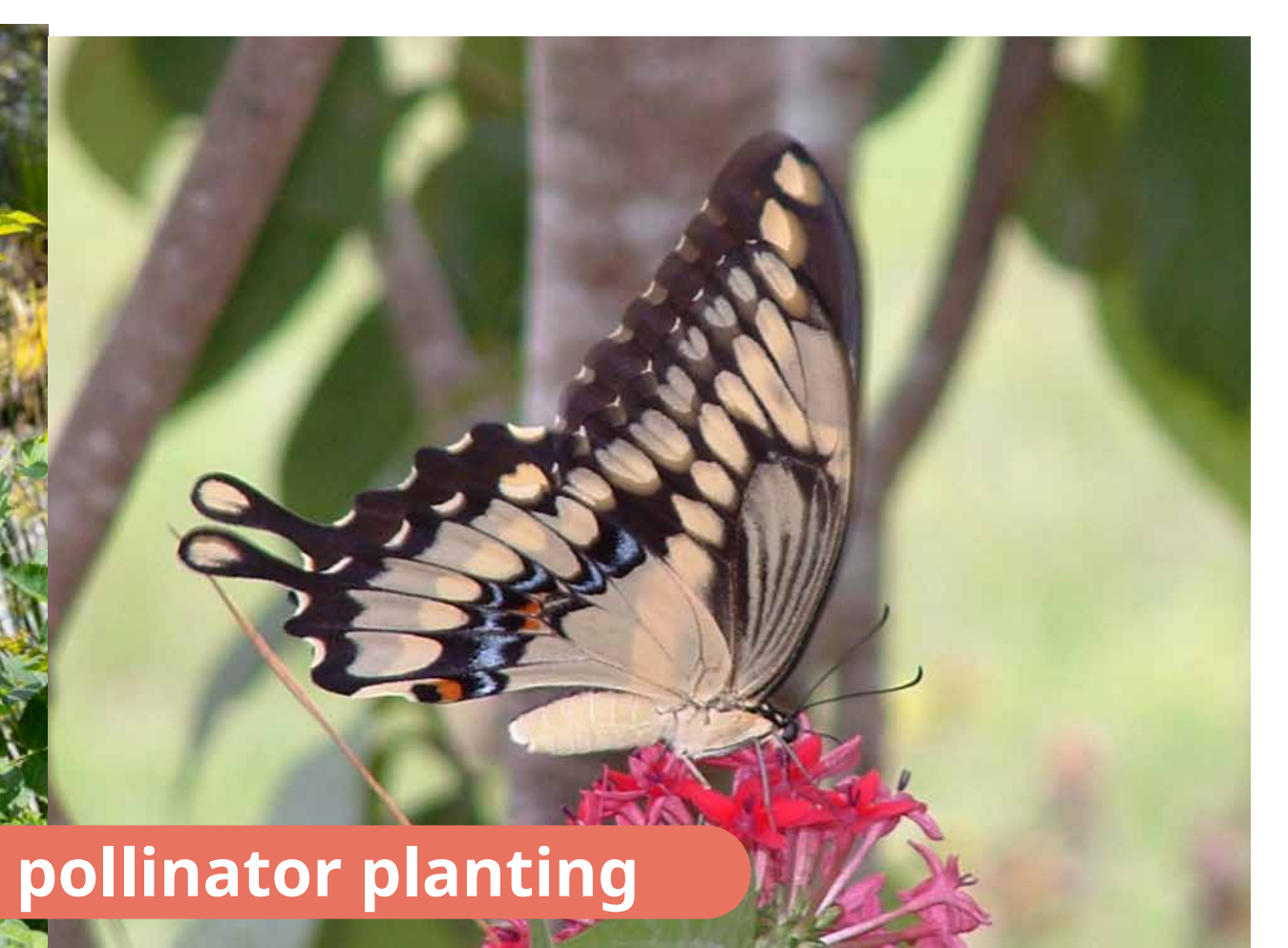
Playground expansion



Entry plaza



Rain garden and pollinator planting



Food and culture garden



Dog off-leash area



# W.C. Shelly Park expansion

## Playground expansion

The playground expansion will make space for a few great play pieces and lots of imagination. The expansion also gives us the opportunity to upgrade the existing wood chips to a more wheel-friendly rubber play surfacing.

The new play pieces will endeavour to prioritize inclusivity for children of all abilities and needs. We also plan to bring in a variety of options for movement with both group and solo play opportunities to help kids develop their motor and social skills.

Take a look at the types of play we are considering for W.C. Shelly Park. Which of these resonates with you? Is there anything we missed that you'd like to see?



View of the existing playground



Swinging individually



Swinging together



Balancing and rocking



Spinning individually



Spinning together



Climbing and agility



Bouncing individually



Bouncing together



Sensory regulation



# W.C. Shelly Park expansion

## What's next?

Thank you for your interest in this project!

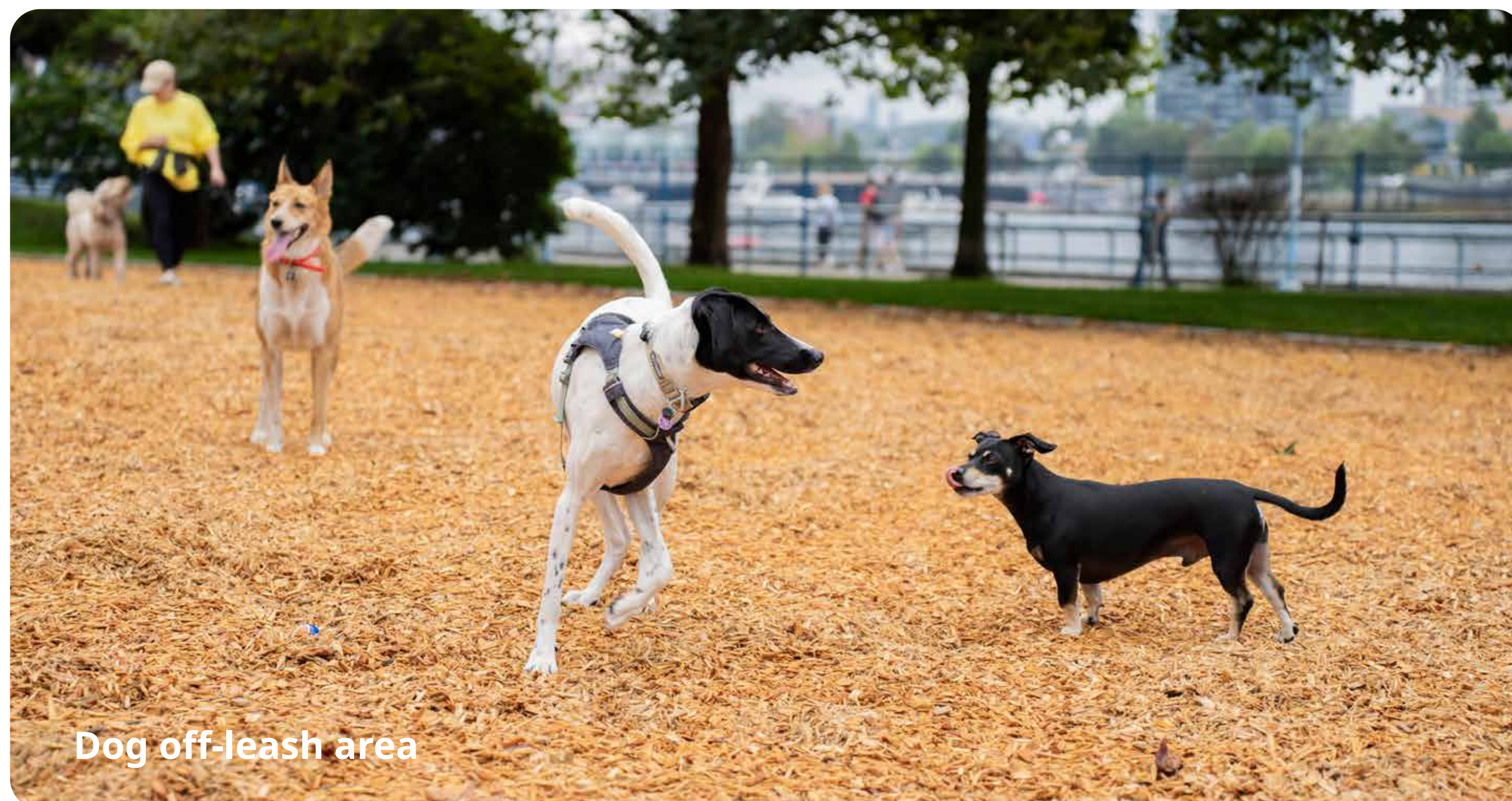
We want to hear from you on the proposed concept plan. Scan the QR code on this page to take our survey and let us know your thoughts.

Your feedback will be used to further refine the concept plan, which will be presented to the Park Board in fall 2025.

## Join us at the park!

We invite you to chat with project staff and provide feedback on the proposed concept plan at our pop-up event.

You'll find our tent in the centre of the park on Saturday, June 14 from 11 am to 2 pm.



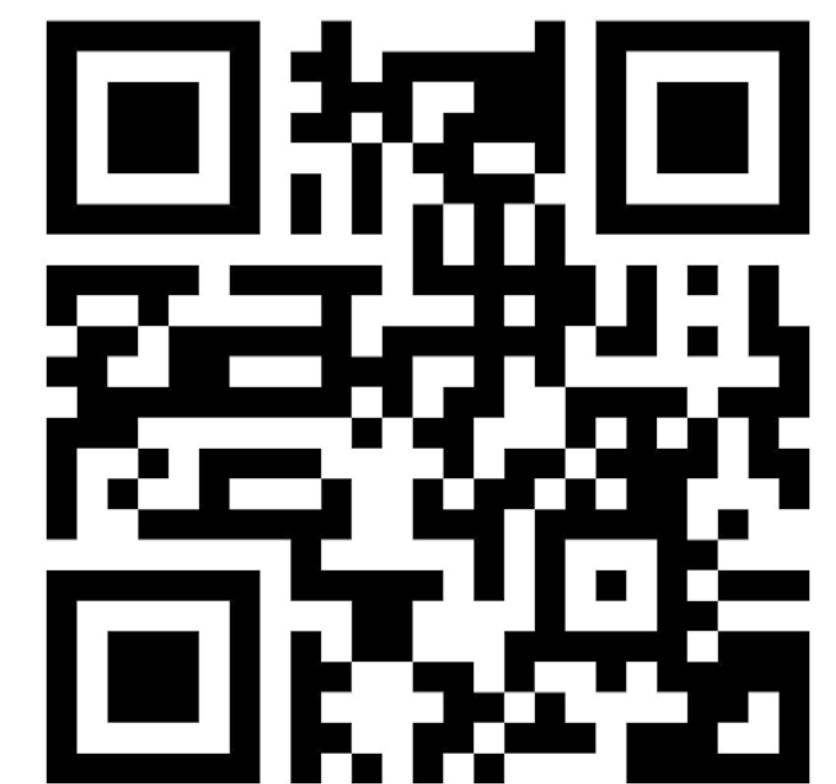
## Stay informed

Keep up to date on next steps for W.C. Shelly Park by signing up for updates or visiting the project webpage:

[shapeyourcity.ca/wc-shelly-park-expansion](https://shapeyourcity.ca/wc-shelly-park-expansion)

## Contact us

[WCSellyExpansion@vancouver.ca](mailto:WCSellyExpansion@vancouver.ca)



W.C. Shelly Park expansion

Public engagement  
June 3–June 22 2025

[shapeyourcity.com/wc-shelly-park-expansion](https://shapeyourcity.com/wc-shelly-park-expansion)

