

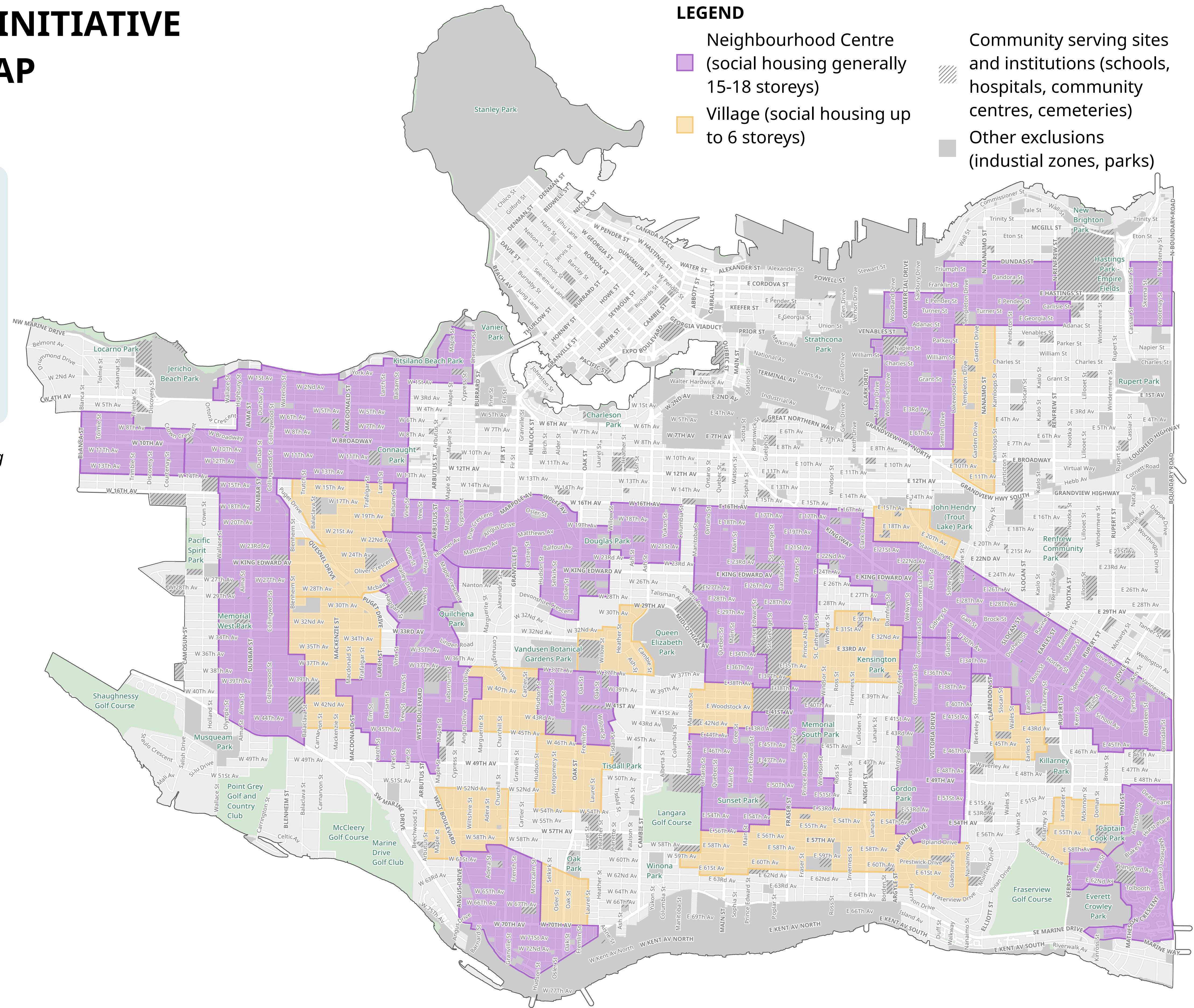
SOCIAL HOUSING INITIATIVE DRAFT ZONING MAP (JANUARY 2025)

Public feedback from the first phase of engagement advised that the draft map was unclear as it did not show explicitly that existing parks, schools, community centres and cemeteries were not proposed for rezoning for social housing. This updated version of the map includes cut-outs to address this concern.

** This proposal focuses on social housing only in these areas. Future area planning will address other housing options, commercial uses, and public spaces etc. in these areas. The final boundaries of these areas will be determined through those processes.*

LEGEND

- Neighbourhood Centre (social housing generally 15-18 storeys)
- Village (social housing up to 6 storeys)
- Community serving sites and institutions (schools, hospitals, community centres, cemeteries)
- Other exclusions (industrial zones, parks)





SOCIAL HOUSING INITIATIVE DRAFT ZONING MAP (SEPTEMBER 2024)

* Existing parks, schools, community centres, and cemeteries are not proposed for rezoning for social housing under this proposal.

* This proposal focuses on social housing only in these areas. Future area planning will address other housing options, commercial uses, and public spaces etc. in these areas. The final boundaries of these areas will be determined through those processes.

LEGEND

-  Neighbourhood Centre (social housing generally 15-18 storeys)
-  Village (social housing up to 6 storeys)

