

Vancouver's Social Housing Initiative Engagement Update



Project Overview



Vancouver's Social Housing Initiative (VSHI) addresses the city's urgent need for affordable housing by simplifying and changing zoning regulations. These changes would allow mixed-income social, supportive and co-operative housing to be built in all Vancouver neighbourhoods without the need for rezoning.

The initiative is intended to allow non-profit and government organizations to build social housing more quickly and cost-effectively in the areas shown on the map below. Depending on the neighbourhood, this housing may take the form of mid-rise buildings or towers.



How we got here

In September 2024, the City launched public engagement on the Social Housing Initiative to gather community input. Since then, we've carefully considered this feedback and combined it with additional technical work to refine our proposal. We are now sharing the updated version and seeking further input prior to bringing a final report to Council for consideration.



What's changed in the updated proposal

Below is a summary of the updates to the proposal, visit our project page for full details (www.shapeyourcity.ca/social-housing).

- **Updated map** where social housing projects could be built without a rezoning (see map on the back).
- **Increased height limits** for tower-form social housing from 18 storeys to 20 storeys to allow more flexibility across various site types.
- **Additional details for the Rezoning Policy** for unique sites are provided, including an updated map (see back) that integrates the existing Interim Rezoning Policy for Social Housing with this new initiative, helping to simplify the city's policies on social housing.
- **Conservation of the existing Champlain Heights forest & trail system** will be included as part of this initiative.




Updated Project Timeline



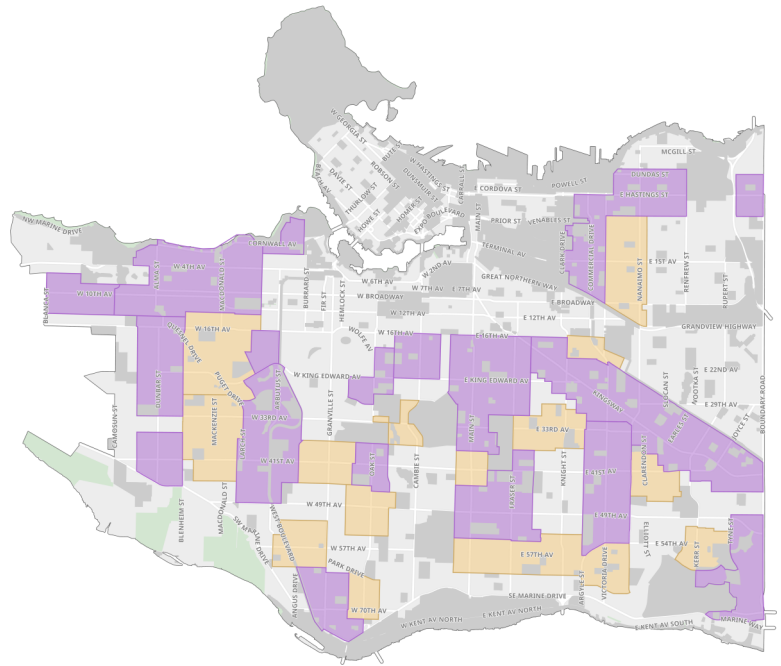
Vancouver's Social Housing Initiative Engagement Update

Updated map where social housing projects could be built without a rezoning



Height guidelines by area type for social housing projects:

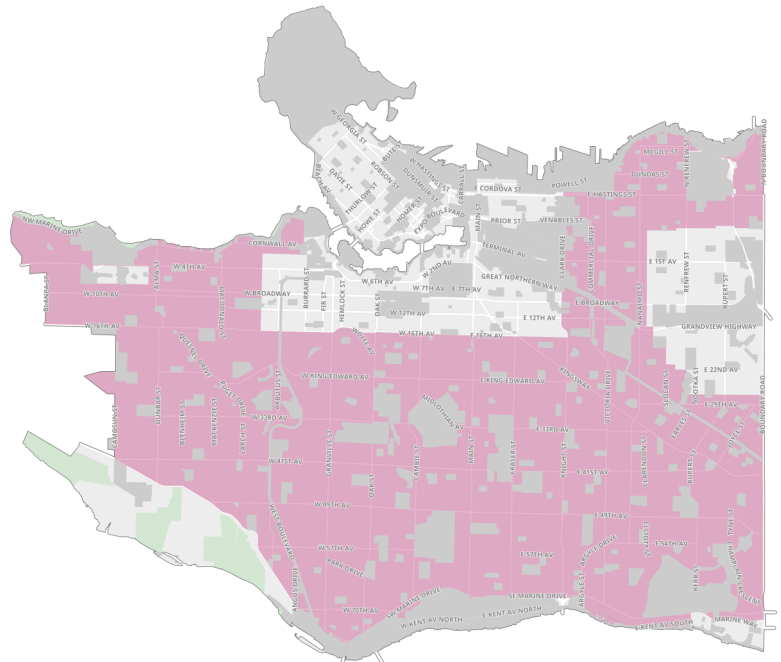
-  Up to 15-20 storeys in areas identified in Vancouver Plan as Neighbourhood Centres*
-  Up to 6 storeys in areas identified in Vancouver Plan as Villages*
-  Community serving sites and institutions (schools, hospitals, community centres, cemeteries), industrial zones, and parks are excluded

* Note this initiative is specific to social housing, final boundaries of Vancouver Plan Villages and Neighbourhood Centres will be determined through on-going and future area planning.



Updated map where social housing projects could be built through a rezoning process

-  Vancouver Social Housing Initiative Rezoning Policy area
-  Community serving sites and institutions (schools, hospitals, community centres, cemeteries), industrial zones, and parks are excluded



How to get involved

- Visit our project page to view the full proposal, sign-up for project updates, submit a comment or ask a question – www.shapeyourcity.ca/social-housing
- Attend an in-person information session:
 - June 19, 2025; 5:00-7:00pm at Champlain Heights Community Centre (3350 Maquinna Drive)
 - June 24, 2025; 5:00-7:00pm at Kerrisdale Community Centre (5851 West Boulevard)
 - June 26, 2025; 5:00-7:00pm at Trout Lake Community Centre (3360 Victoria Drive)
- Attend our virtual information session:
 - June 25, 2025; 6:00-7:30pm (register at <https://vshi-info-session.eventbrite.ca>)



Project Page
QR Code