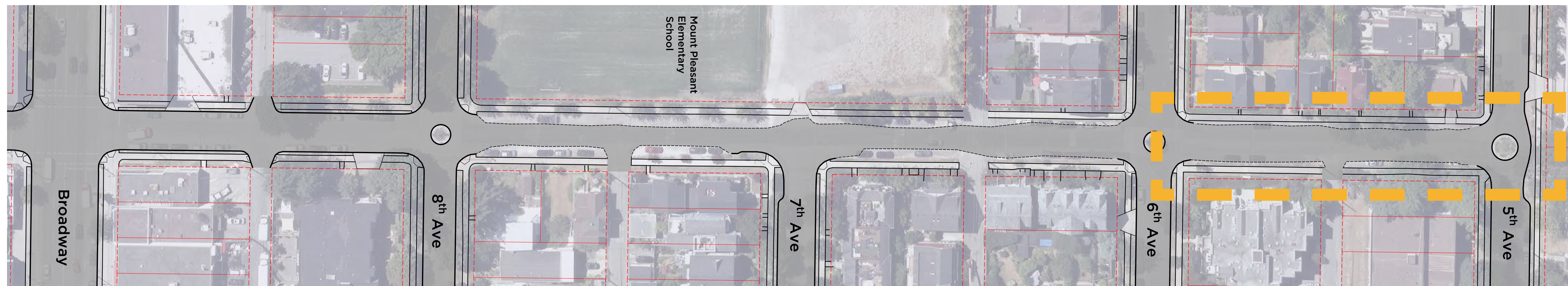


ST. GEORGE RAINWAY

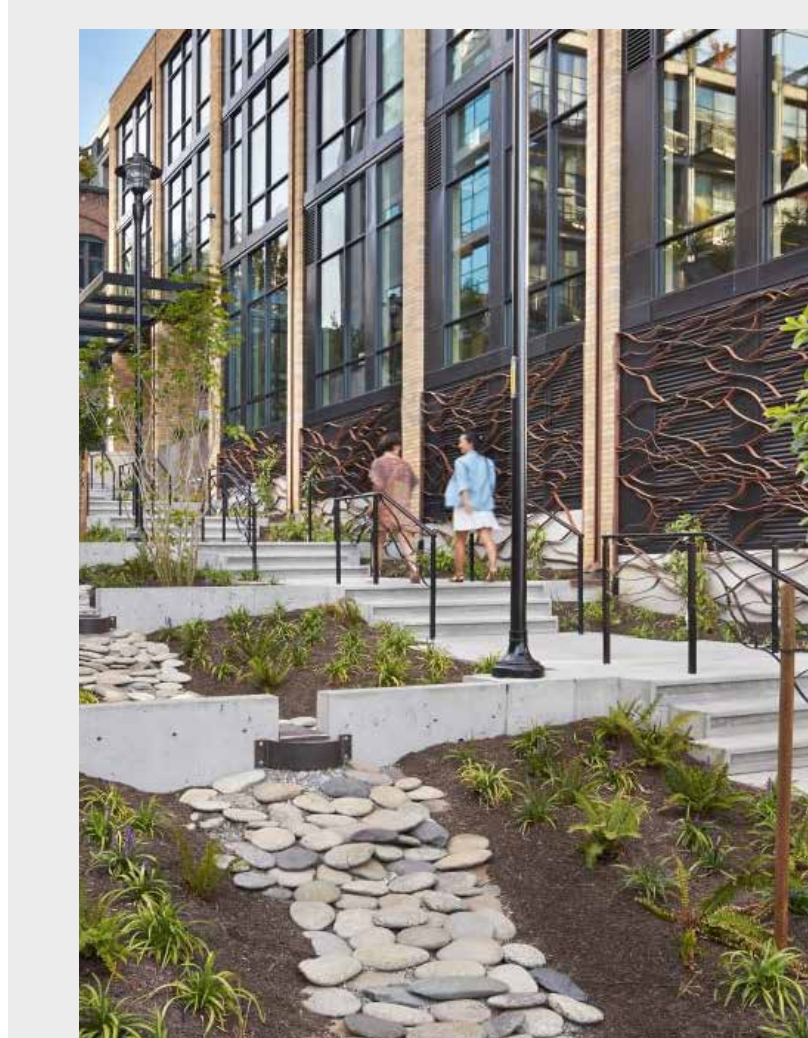
Design | Steep Slope Challenges



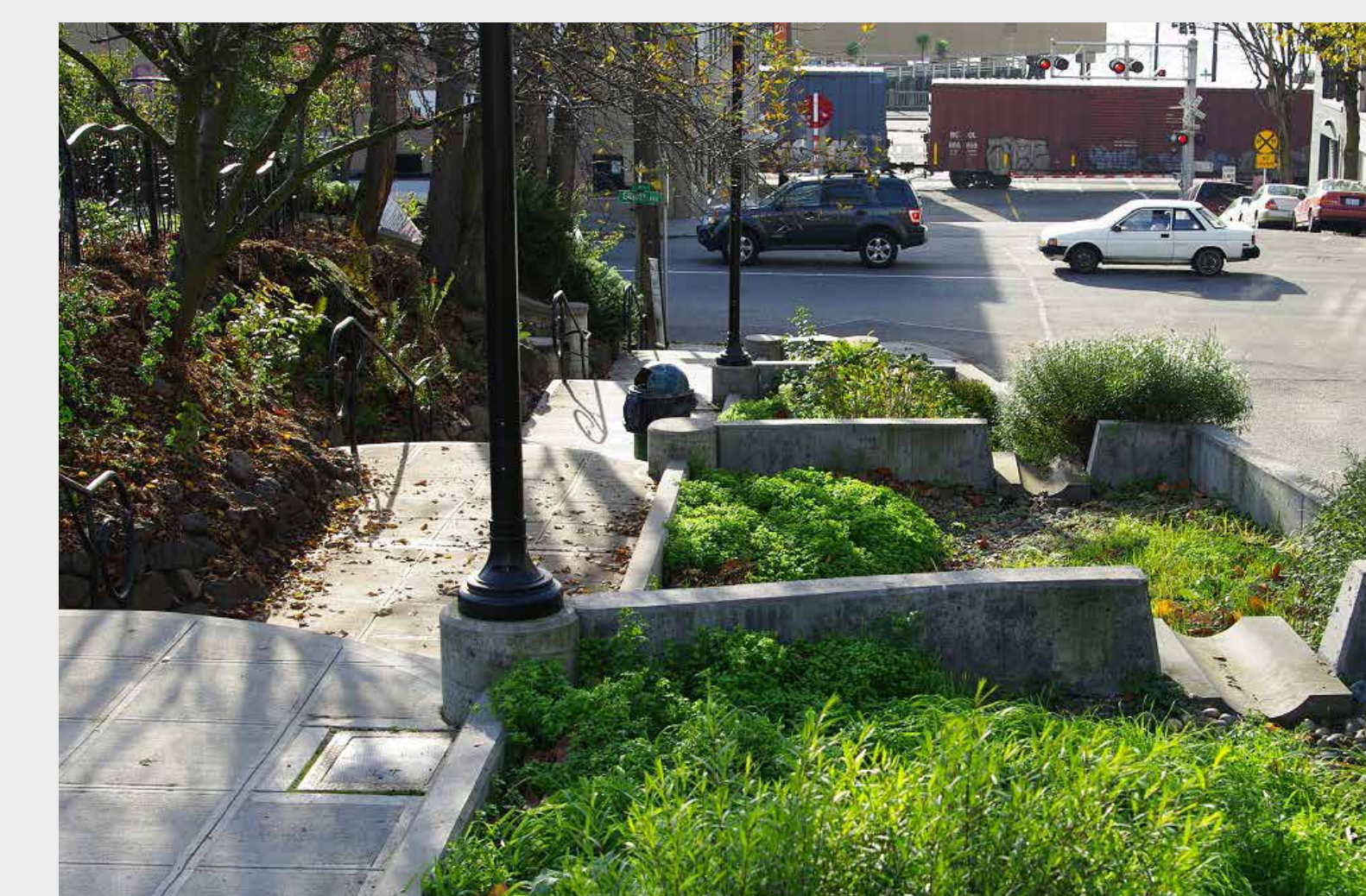
Green rainwater infrastructure (GRI) reduces urban rainwater runoff entering the sewer system by soaking, or infiltrating, it into the soil. This is difficult on steep slopes, however, because it's hard to hold the urban rainwater runoff long enough for it to infiltrate.

We are working on solving several engineering challenges while designing the St. George Rainway between E 6th Ave and E 5th Ave. The preferred GRI option (Flow, Ripple, or Falls) will still be applied to this section of the road.

One solution for this steep block is to build several terraces to hold back urban rainwater runoff. The GRI terraces could be aligned with sets of steps on the east side of St. George Street while the existing sidewalk will remain on the west side. This potential design solution will be reviewed by the City of Vancouver's Persons with Disabilities Advisory Committee (PDAC) and other relevant groups.



Growing Vine Street, Seattle

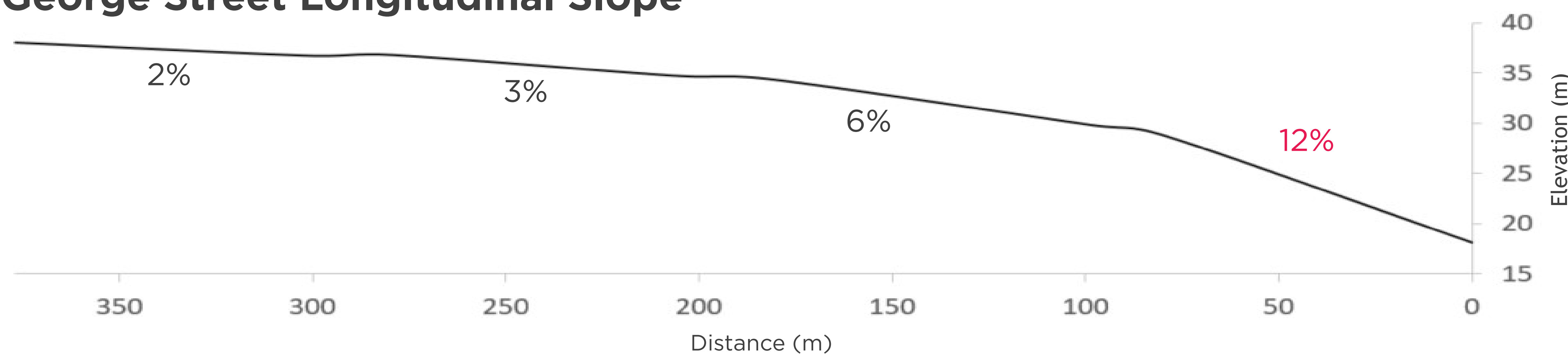


Growing Vine Street, Seattle

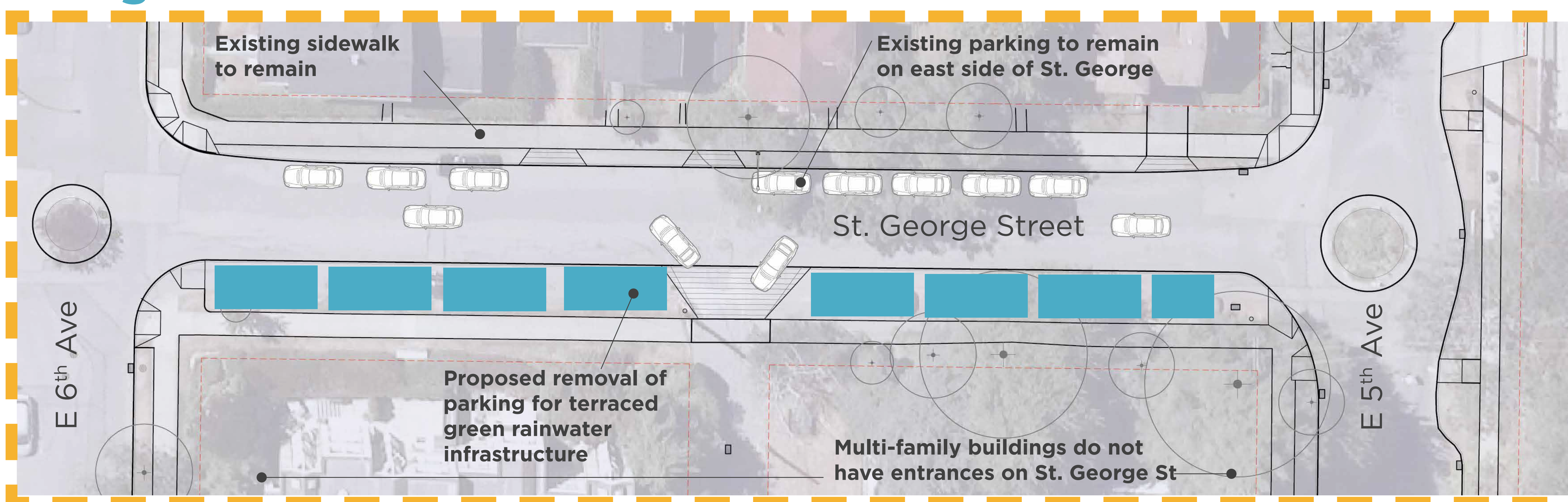
Connect & learn more

[St. George Rainway on Shape Your City Rain City Strategy](#)

St. George Street Longitudinal Slope



Design Solution: Terraced Rain Garden



Connect & learn more

[St. George Rainway on Shape Your City Rain City Strategy](#)

ST. GEORGE RAINWAY

Design | Public Space Improvements

What would you like to do, see, and experience in the Rainway?

Interaction and Play

What elements would encourage you to interact with and play along the Rainway?



Boulders



Bridges with stepping stones



Large tree logs



Rain activated paint



Mini community libraries



What else?

Connecting with People and Nature

What styles of seating and platforms would you like incorporated into the Rainway?



Integrated seating in nature



Seating along edges of nature



Informal picnic



Platforms overlooking nature



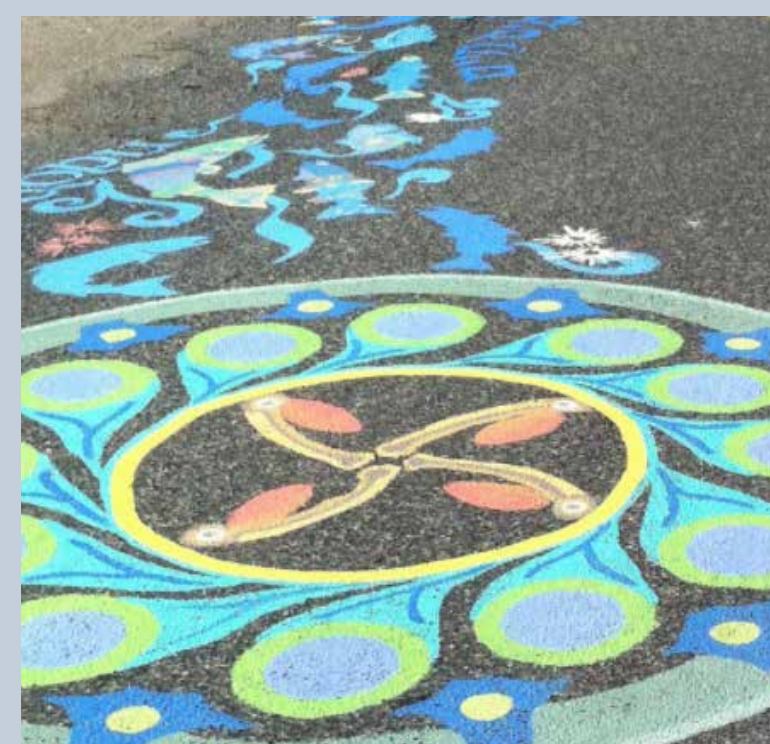
Outdoor plaza spaces



What else?

Learning

What formal and informal elements would you like to see added to the Rainway to help users learn about nature, climate adaptation, Indigenous culture, and history?



Street mural



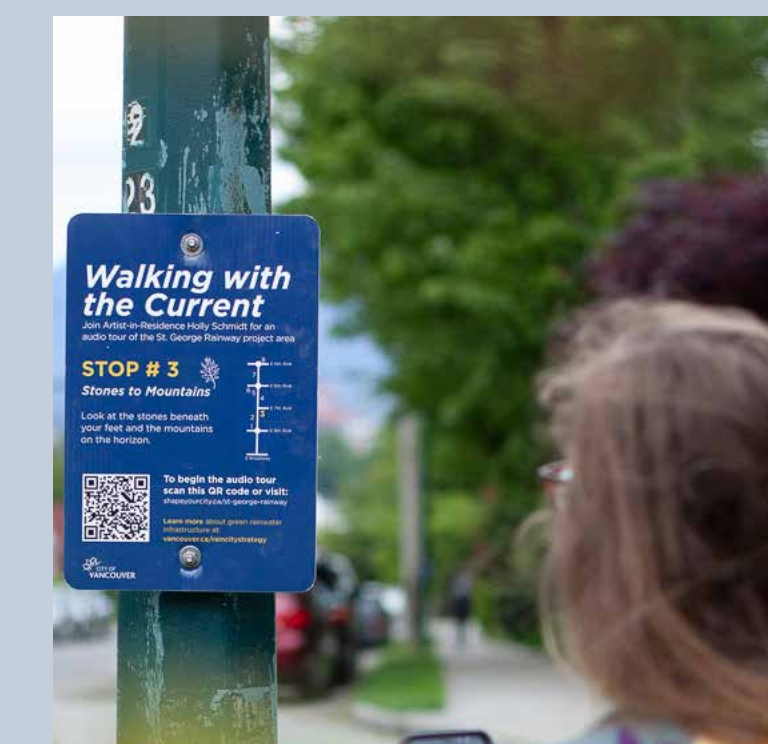
Sculptural element featuring water



Engraved paving



Pollinator houses



Augmented reality signage



What else?