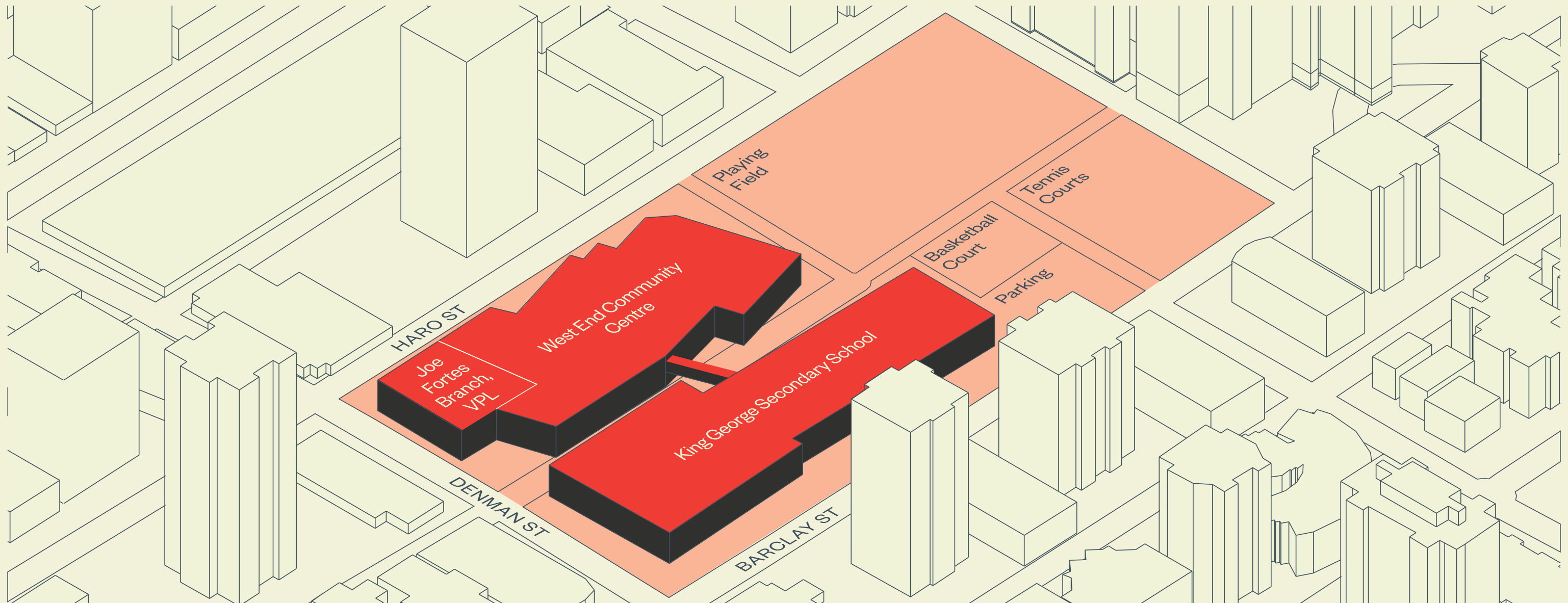


# West End Community Hub Renewal Plan

W.E.  
W.E.  
W.E.  
W.E.  
CONNECT  
CONNECT  
CONNECT  
CONNECT

## Phase 1 Report: Vision & Principles

Issued: December 2021

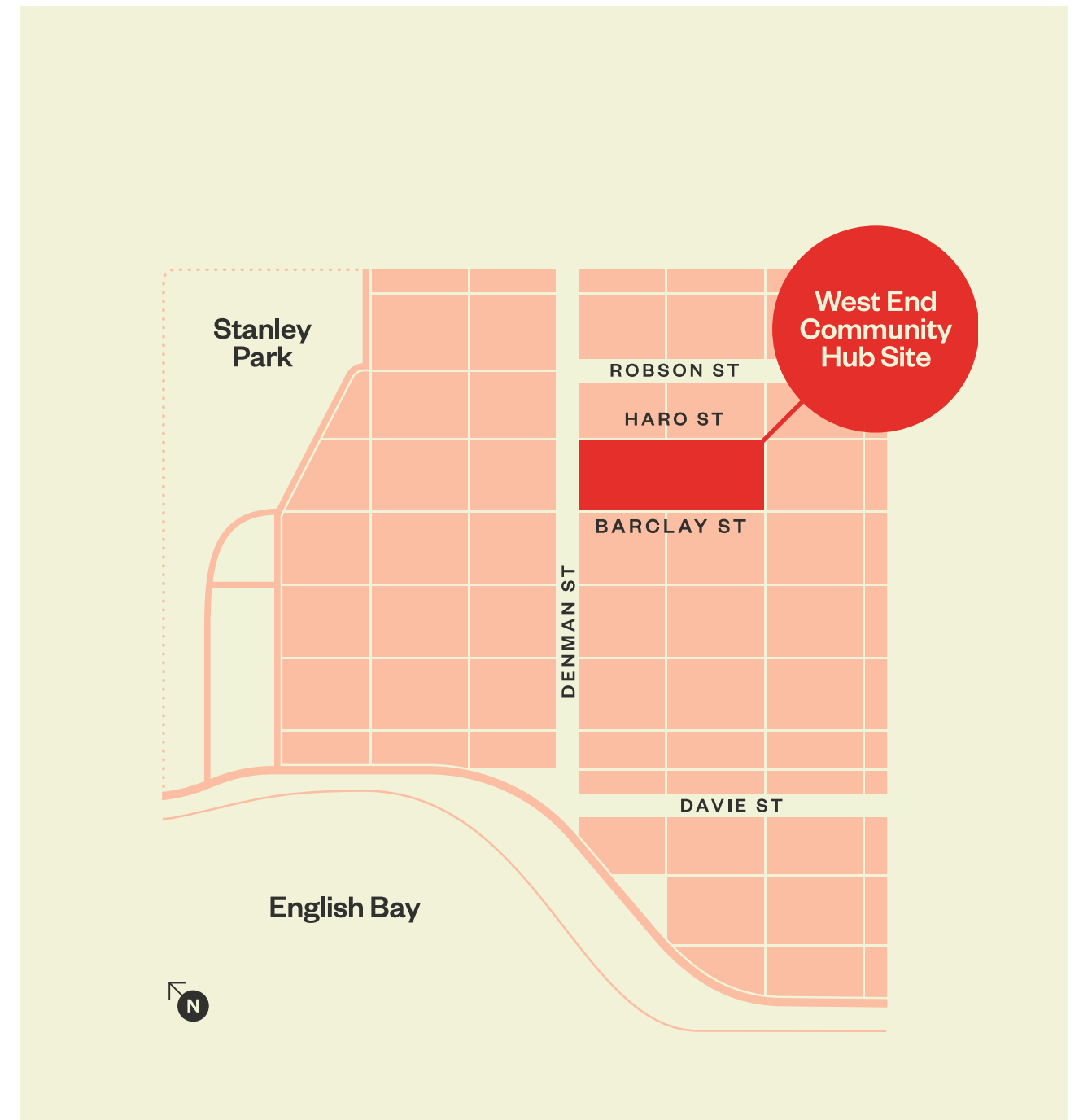
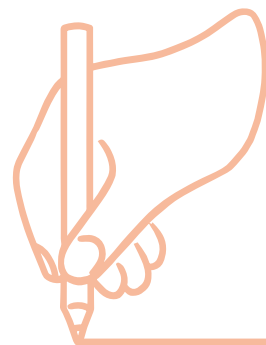


## Executive Summary

This project is for the renewal of an important West End community site that currently houses the West End Community Centre, Joe Fortes Branch of the VPL, and the King George Secondary School (KGSS). It is led by the City of Vancouver in partnership with the Vancouver Board of Parks and Recreation (VPB), Vancouver Public Library (VPL), Vancouver School District and the West End Community Centre Association (WECCA).

To support this project, known as the West End Community Hub (WECH) Renewal Plan, a community engagement effort called W.E. Connect began in fall 2021. The WECH Renewal Plan has five phases, and this report presents the process and results of the first phase, which developed Vision and Principles for the future community hub.

A key part of the WECH Renewal Plan is the project partners' ongoing commitment to reconciliation with Indigenous peoples. Knowledge Holders, artists and youth from each of the three Host Nations— xʷməθkʷəy̓əm (Musqueam), Skwxwú7mesh (Squamish), and səliłwətał (Tseil-Waututh))—guided the engagement process and helped develop the Vision and Principles. In particular, three Coast Salish Project Associates each created an artwork that shares a story of their Nation's unique and deep connection to the area now known as the West End. Two local Community Artists also supported the engagement with their artwork and stories.



▲ Site plan identifying project location

**Hundreds of people connected to the West End participated in the fall 2021 engagement. Opportunities to be involved ran from September through December including:**

- Engagement advice from dozens of West End community organizations;
- Coast Salish Chronicles of the West End — an online event featuring Knowledge Holders and artists from xʷməθkʷəy̓əm (Musqueam), Skwxwú7mesh (Squamish), and səlilwətał (Tsleil-Waututh) Nations;
- West End Experiences Survey, which collected memories and experiences of the neighbourhood (over 375 stories were shared);
- Self-paced engagement stations in five locations around the West End that showed original artwork created by the Coast Salish Project Associates and two Community Artists;
- Seven pop-up events hosted by Youth Ambassadors, connecting with over 400 people;
- Eight visioning workshops, some held on-line and others in-person, with over 310 participating in total;
- Synthesis Workshop, led by project partners and volunteers, to review and draft the Vision and Principles for the future community hub (see below for details); and,
- Public report-back event, held online, to share and get feedback on the draft Framework, Vision and Principles.


W.E.

W.E.

W.E.

W.E.

CONNECT  
CONNECT  
CONNECT



**Deepen your connections to this community, this place, this land.**

**Then, help imagine the renewed West End Community Hub.**

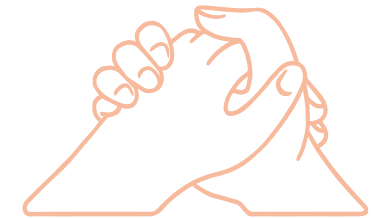
**WE.CONNECT**

▲ W.E. Connect Engagement branding and key messaging

In early November, we held a Synthesis Workshop to review and create themes from the diverse community input and West End stories we collected. Participants, including volunteers from all past events, worked together to develop a draft Vision and Principles for the WECH Renewal Plan. The results of this workshop were brought together into one final draft Vision and Principles, which was then reviewed by the Coast Salish Project Associates, and then by the project partners.

With the encouragement of the Coast Salish Project Associates, a reconciliation-focused framework was developed to support the Vision and Principles. The results were then presented back to the community at a workshop with over 80 attendees for final review and feedback in early December.

## The resulting Vision and Principles developed for the West End Community Hub Renewal Plan, which will guide the planning work moving forward, are:



### Framework

The West End of Vancouver is a culturally and historically rich location for Coast Salish people. The WECH framework outlines how WECH Project Partners will advance reconciliation while supporting neighbourhood aspirations. See Section 4.2 for the framework.

### Vision

#### Vision for the West End Community Hub :

The West End Community Hub celebrates Vancouver's connection to xʷməθkʷəy̓əm (Musqueam), Skwxwú7mesh (Squamish), and səlilwətaʔ (Tsleil-Waututh) cultures, and supports play, learning, creativity and wellness for all people.

### Principles

#### The West End Community Hub will...

make visible and strengthen connections to Coast Salish people, history, and culture.

weave the fabric of our communities together, creating a safe, inclusive, accessible, equitable place that is welcoming to all.

be integrated, flexible, and responsive to changing community needs.

bring in sounds, sights, and experiences of the natural environment.

provide spaces and plant the seeds for creativity, innovation and co-learning across cultures and generations.

offer a mix of social spaces for celebrating, ceremony, spontaneous connections, or finding quiet.

grow community and individual resilience by using seven-generation thinking.



## What's Next?

The next phase, *Space Needs Identification*, builds on the Vision and Principles and begins in early 2022. This phase will explore how people currently use the site and how they want to use it in the future, which will result in a high-level plan (functional program) that describes what is needed for accessibility, inclusivity, sustainability, resilience, and other community priorities and policy directions.

Following phases will include developing and getting feedback on initial options for how the community hub spaces take shape, followed by developing and inviting feedback on a preferred option. Lastly, the final WECH Renewal Plan will be publicly shared and submitted to the partners for approval.

### Project Timeline



▲ Project timeline and phasing



▲ Fall Engagement activities



## W.E.CONNECT

For more information, please visit [shapeyourcity.ca/weconnect](http://shapeyourcity.ca/weconnect)

For any inquiries, please contact [weconnect@hcma.ca](mailto:weconnect@hcma.ca)

