



Dude Chilling Park Public Questionnaire Summary - December 2013

In November 2012, an unauthorized sign was erected in Guelph Park that read "Dude Chilling Park". The Dude Chilling Park sign mimics the standard park sign found in city parks. After the sign was removed by staff, the Park Board received expressions of support from local residents for the unofficial sign including a petition signed by 1,500 residents who suggested the piece be installed permanently in the park.

In March 2013, the Park Board approved a motion directing staff to recommend action for the future of the "Dude Chilling Park" sign. The following steps were then taken:

- The letter with accompanying signatures requesting the installation and an email confirming the artist would donate the work were formally accepted.
- Technical approval meetings were convened and site approvals obtained.
- The aesthetic review was completed on October 15, 2013 by the Public Art Committee (PAC) who recommended the Park Board accept the work and that it be installed at the original location.

Community consultation regarding the proposed siting was completed including:

- Signage on site
- Notice to residents within a two block radius from the installation site
- Advertisement in Vancouver Courier and by social media
- An online questionnaire
- Stakeholder review with the Brewery Creek Community Garden Society

The consultation process provided residents with a 21 day window in which to respond. A total of 372 responses were received. The following summarizes feedback received by questionnaire

- 77% (287) responded positively
- 2% (8) responded negatively
- 21% (77) responded neutrally

The survey results show that 66% (246) preferred the artwork to be installed at the corner of 8th and Brunswick St, where the piece was originally erected. In addition 9% (33) of respondents indicated a preference for the installation to be near the community art exchange box, while 25% (93) responded with no preference.

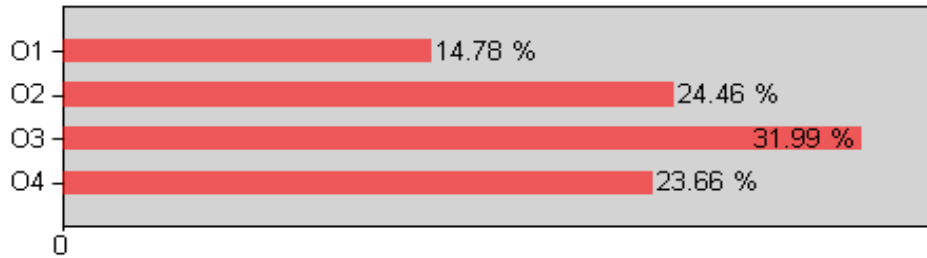
Respondents in support of the artwork indicated the following;

- The artwork celebrates a sense of community and belonging and represents the contemporary history of the park;
- The artwork will be a focal point in the park, which will bring out more residents to enjoy the park; and
- The artwork will add to the aesthetics of the park's visual culture.

Frequency: How often do you visit Guelph Park?

QUESTION TOTAL: 372
NO RESPONSE: 19

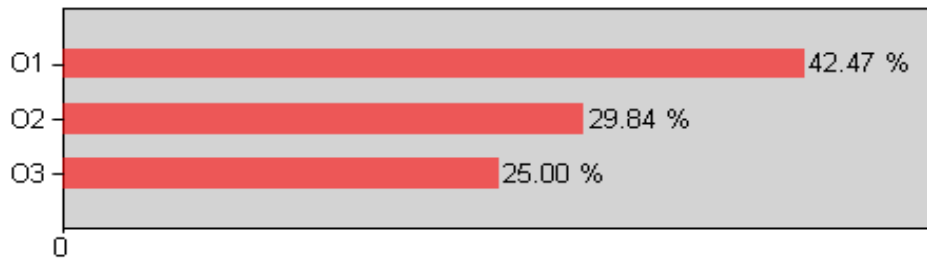
	OPTIONS	TOTAL	PERCENT
O1	Daily	55	14.78%
O2	Weekly	91	24.46%
O3	Monthly	119	31.99%
O4	Yearly	88	23.66%



Proximity_0: Live

QUESTION TOTAL: 372
NO RESPONSE: 10

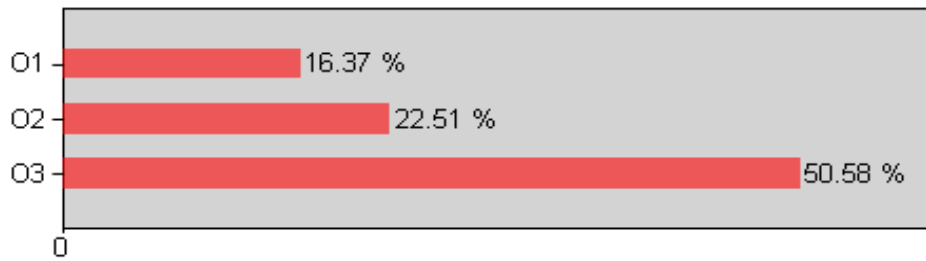
	OPTIONS	TOTAL	PERCENT
O1	Less than 10 blocks	158	42.47%
O2	10 – 20 blocks	111	29.84%
O3	More than 20 blocks	93	25.00%



Proximity_1: Work

QUESTION TOTAL: 342
NO RESPONSE: 36

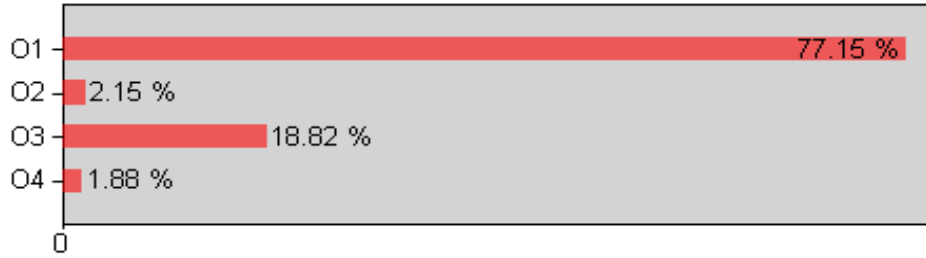
	OPTIONS	TOTAL	PERCENT
O1	Less than 10 blocks	56	16.37%
O2	10 – 20 blocks	77	22.51%
O3	More than 20 blocks	173	50.58%



Impact: Do you think the proposed art installation will have any impact on the usage

QUESTION TOTAL: 372
NO RESPONSE: 0

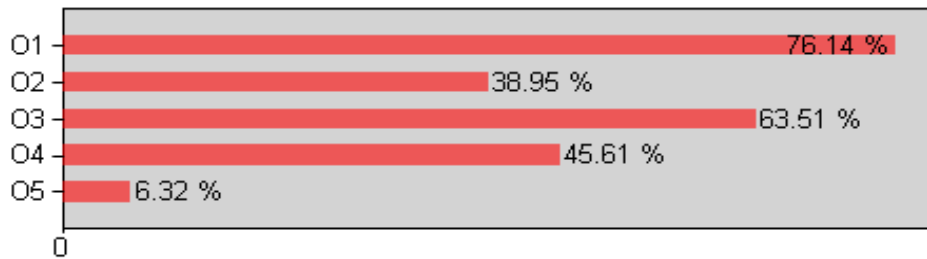
	OPTIONS	TOTAL	PERCENT
O1	Yes, it will have a POSITIVE IMPACT	287	77.15%
O2	Yes, it will have a NEGATIVE IMPACT	8	2.15%
O3	No, people will still use the park as they always do	70	18.82%
O4	No idea	7	1.88%



WhyPositiveImpact: Why do you think the proposed art installation will have a

QUESTION TOTAL: 285
NO RESPONSE: 2

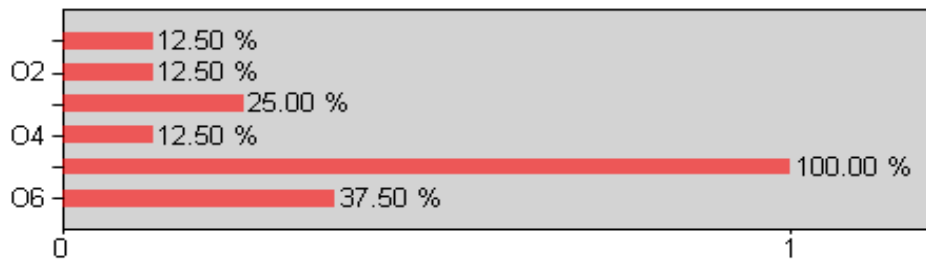
	OPTIONS	TOTAL	PERCENT
O1	Local residents will come to check out the new art	217	76.14%
O2	The park will become more visually attractive	111	38.95%
O3	It will provide a focal point for the park	181	63.51%
O4	Other	130	45.61%
O5	Other	18	6.32%



WhyNegativeImpactCopy1: Why do you think the proposed art installation will have a

QUESTION TOTAL: 8
NO RESPONSE: 0

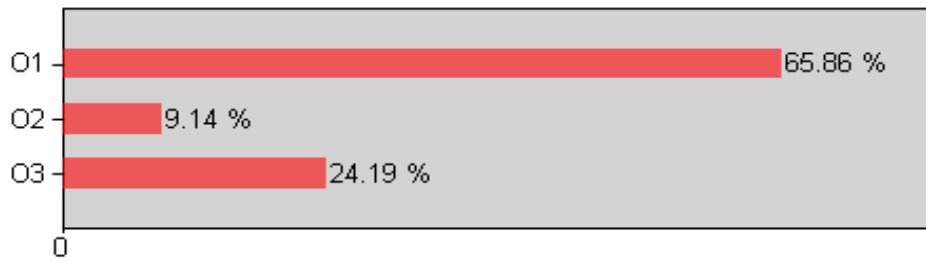
	OPTIONS	TOTAL	PERCENT
O1	The location will interfere with sports that take	1	12.50%
O2	The location will interfere with events that take	1	12.50%
O3	Free space available for use in the park would be	2	25.00%
O4	Construction process would be disruptive	1	12.50%
O5	Other	8	100.00%
O6	Other	3	37.50%



PreferredSite: There are two potential sites for the sign. The original installation site

QUESTION TOTAL: 372
NO RESPONSE: 3

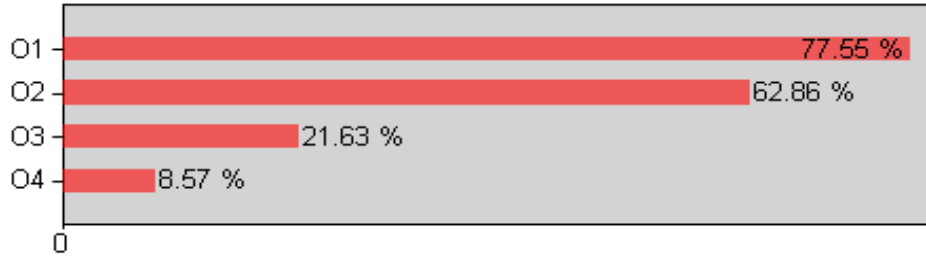
	OPTIONS	TOTAL	PERCENT
O1	Corner of 8th & Brunswick St.	245	65.86%
O2	Near the community garden by the art exchange	34	9.14%
O3	No preference	90	24.19%



Why8th: Why do you prefer the site at the corner of 8th & Brunswick?

QUESTION TOTAL: 245
NO RESPONSE: 0

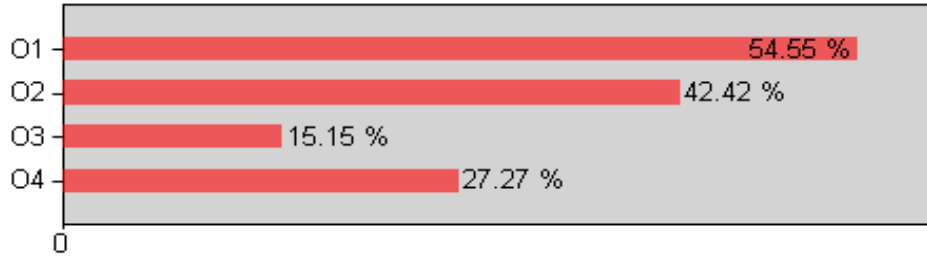
	OPTIONS	TOTAL	PERCENT
O1	That's where the artist originally installed the	190	77.55%
O2	This site is more visible to the park visitors	154	62.86%
O3	This site will not negatively impact the current use	53	21.63%
O4	Other(specify)	21	8.57%



WhyGarden: Why do you prefer the site near the community garden by the art

QUESTION TOTAL: 33
NO RESPONSE: 0

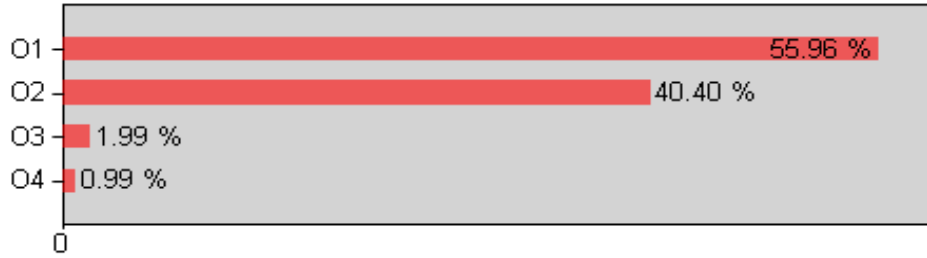
	OPTIONS	TOTAL	PERCENT
O1	This site will create a focal point for the park	18	54.55%
O2	This site is more visible to park visitors	14	42.42%
O3	This site will not negatively impact the current use	5	15.15%
O4	Other(specify)	9	27.27%



Gender: Do you identify primarily as___?

QUESTION TOTAL: 302
NO RESPONSE: 2

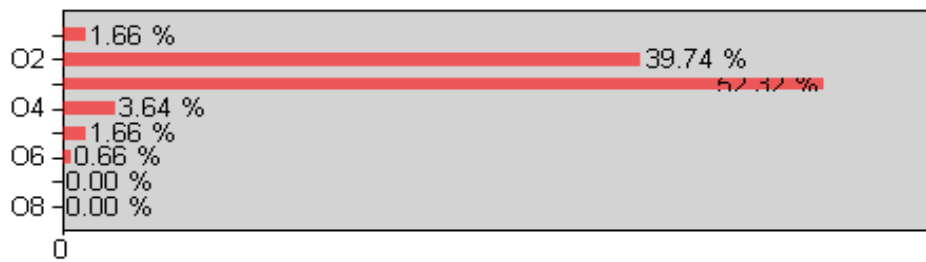
	OPTIONS	TOTAL	PERCENT
O1	Male	169	55.96%
O2	Female	122	40.40%
O3	Transgender	6	1.99%
O4	Other(please specify)	3	0.99%



Age: Which age group do you belong to?

QUESTION TOTAL: 302
NO RESPONSE: 1

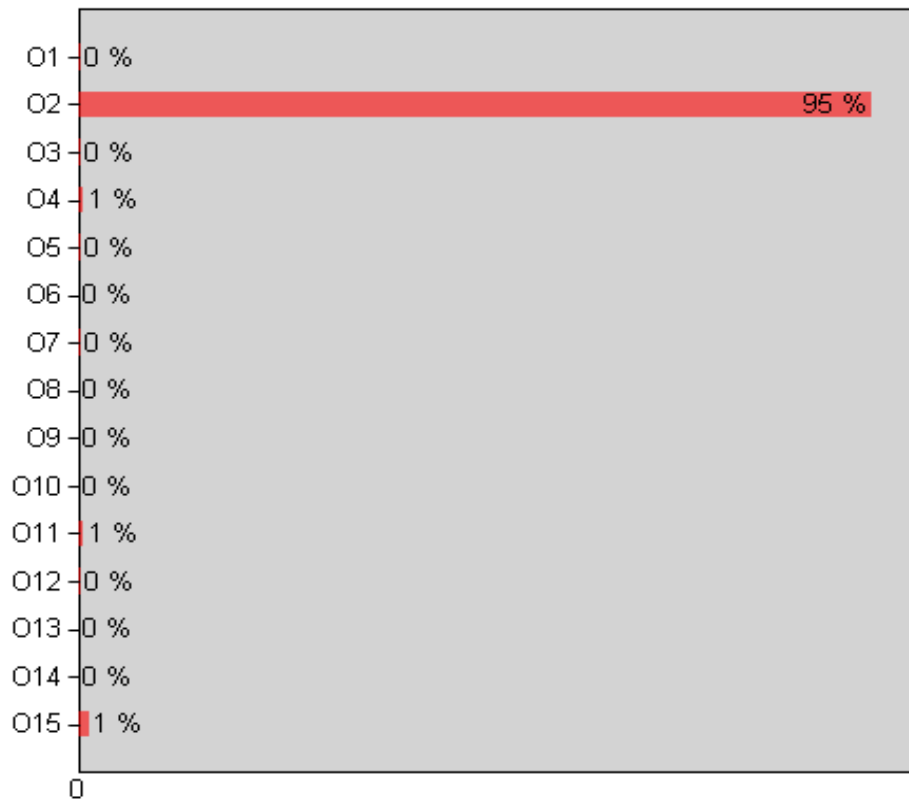
	OPTIONS	TOTAL	PERCENT
O1	19 or younger	5	1.66%
O2	20-29	120	39.74%
O3	30-49	158	52.32%
O4	50-59	11	3.64%
O5	60-64	5	1.66%
O6	65-69	2	0.66%
O7	70-79	0	0.00%
O8	80yrs or older	0	0.00%



Q12_Home_Language: What language do you speak at home most often?

QUESTION TOTAL: 302
 NO RESPONSE: 3

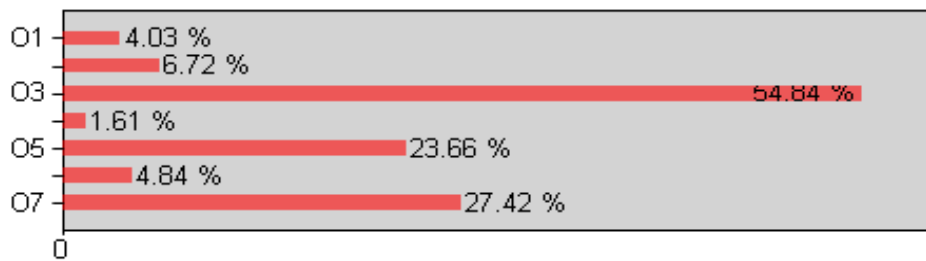
	OPTIONS	TOTAL	PERCENT
O1	Cantonese	1	0.33%
O2	English	286	94.70%
O3	Farsi	1	0.33%
O4	French	2	0.66%
O5	German	1	0.33%
O6	Hindi	0	0.00%
O7	Italian	1	0.33%
O8	Japanese	0	0.00%
O9	Korean	0	0.00%
O10	Mandarin	0	0.00%
O11	Punjabi	2	0.66%
O12	Spanish	1	0.33%
O13	Tagalog	0	0.00%
O14	Vietnamese	0	0.00%
O15	Other – specify	4	1.32%



FindOut: How did you find out about the current questionnaire?

QUESTION TOTAL: 372
NO RESPONSE: 0

	OPTIONS	TOTAL	PERCENT
O1	City of Vancouver Sign	15	4.03%
O2	Vancouver.ca	25	6.72%
O3	Social Media	204	54.84%
O4	Newspapers	6	1.61%
O5	Friend or family member	88	23.66%
O6	Posters	18	4.84%
O7	Other (specify)	102	27.42%



VERBATIM

Thursday, July 3, 2014 12:38 pm (GMT-08:00) Pacific Time (US & Canada)

TITLE: Verbatim

WhyPositiveImpact_Other. Why do you think the proposed art installation will have a positive impact on the usage of the park?

Verbatim Responses	Total
It's awesome	2
Sense of community pride	2
"Guelph Park" is an eminently forgettable name. It's just "that park north of Kingsgate Mall" for most people. *Nobody* forgets "Dude Chilling Park".	1
Adds culture, history, whimsical :)	1
adds humour	1
adds sense of community	1
although i agree that lical residents will enjoy the art, i also believe that the sign will remind those infrequent users of thr name of an otherwise unremarkable park. the sign will help vancouverites familiarize themselves with the park	1
And now I feel like going and checking this park out	1
Artist recognition	1
As there is already an art exchange, would be great to see this little park become more of art space!	1
Attract new visitors	1
Awesome is attractive	1
Clever, current satire is important to the community	1
Community Spirit is enhanced	1
Community spirit!	1
Creates a comfortable, lighthearted atmosphere	1
creates a sense of pride and civic involvement	1
Demonstrate civic engagement of residents	1
Demonstrate neighborhood pride	1
Dude Chilling!	1
dudes will do more chilling there	1
Focus residents attention on this park	1

Generates social interaction	1
Gives the park a fun atmosphere	1
gives the park a story and an interest	1
Historical monument for grassroots planning	1
I am very much looking forward to seeing the proposed art installation executed and hope other art installations of this type also get to be realized.	1
I never used the park at all until I heard about the sign and the online petition to save it. I know many other people who have visited the park just to see the sign. We now refer to it as dude chilling park	1
I think tourists will look for it and find it amusing. It says something about Vancouver and East Van in particular that we would embrace this.	1
Increased laughter	1
interest	1
It encourages people to hang out in the park, isn't that what the park is there for?	1
It gives the community a sense of ownership of their public green space.	1
It is a source of pride and fun.	1
It is an inside joke that will help make community members feel a sense of belonging	1
It is cool and fun	1
It is descriptive of what the park is about. What is a Guelph and why should we care? Nobody likes you Guelph, bring back Dude Chilling!	1
It is humorous	1
it is humourous	1
it is out of the ordinary and might cause people to stop and laugh	1
It is whimsical, which is good.	1
it makes the City of Vancouver board seem pretty chill	1
It may become a landmark in the Mt Pleasant area - it has already achieved a level of infamy (e.g. was named as Dude Chilling Park on Google maps for a time)	1
it opens the city as welcoming of public art created not only through bureaucratic means but also community initiative.	1
it reflects the personality of the community, and will make us feel like we have some say in our environment.	1

It represents a positive and humorous outlook, that will improve perception of the park.	1
it shows a sense of humor and also highlights the original sculpture in the park, aka the dude chilling in the park	1
It shows that a community can express itself outside of the norm in a positive way.	1
It shows we are capable of having fun and being silly. Fosters a sense of community, uniqueness.	1
It will add character.	1
It will be a photo-souvenir draw for both locals and tourists.	1
it will become more of a destination, people will come out of their way to check it out	1
It will bring a lot of attention to a boring park.	1
It will celebrate the creativity in the area with humor	1
It will encourage chilling in the park	1
it will establish Vancouver as an even more cool and progressive city	1
it will give the park a much better sense of place. "Guelph" doesn't have any meaning to people	1
It will give the park a place where humour and fun is encouraged.	1
It will give the park some distinct character	1
It will placate Reddit	1
It will promote the general attitude and personality of the surrounding residents	1
It will provide smiles. West coast sense of humour.	1
It will provide some badly-needed Vancouver-appropriate light-hearted humor to help tie the community together.	1
It will raise the profile of the park	1
it will receive positive international attention via the internet	1
it will reflect the youth and interest/appeal/invite these under 30's to feel a sense of belonging	1
It will remind people parks are for sculpture and chilling!	1
It will remind the public that they have the power to change their environment. It's a symbol of individual empowerment.	1
It will show that the parks board has a sense of humour	1
It will show that Vancouver has a sense of humor.	1

It will show that Vancouver has interesting attitudes and ideas	1
It will turn an unremarkable park into a landmark, a place	1
it'll bring the community together as it'll be evidence that the city listens to locals	1
It's a conversation piece and supports the idea of ownership of the park by local residents.	1
It's a part of Vancouver folklore.	1
it's an inside joke for the hood that captures it's spirit of playfulness... duh.	1
It's cool and people (tourists, vancouverites from other areas) will come to check out the dope sign.	1
its downright awesome that the sign will be allowed to exist	1
It's entertaining an fitting for the neighborhood - not another boring piece of art that people are "supposed" to like.	1
It's gives resident's a sense of ownership over the park. So many parks are named after rich landowners, this sign signifies the public taking ownership of public space.	1
It's hilarious	1
it's hilarious, shows Vancouver has a sense of humour.	1
It's just cool.	1
It's kooky and fun!	1
It's quirky and awesome and reflects the character of the neighbourhood.	1
It's something that other parks don't necessarily have, so It will be a unique feature	1
It's unique and adds character!	1
It's unique and entertaining!	1
It's unique!	1
It's viral marketing	1
I've lived within 2 blocks of the park for over 5 years (now directly across the street) and during that time it has been fairly seedy. The only reprieve from it being a place for alcoholics to pass out drinking 2 Liter bottles of Grower's cider was when people came to see this sign. It was uplifting and gave the park a chance to actually be used and enjoyed by the neighborhood.	1
Local residents will feel more comfortable knowing they had a positive impact on their community.	1
Local residents will identify with the park sign	1
locals will bring friends and out of towners to see	1

more smiles, photo ops	1
News of the sign has travelled outside of Vancouver, it could very well be a tourist destination.	1
Non-local residents will come check it out, because of the notoriety	1
Not only does it add to the original art piece that already exists in the park but it also has the possibility of helping the park become a tourism destination for travellers who would love to spend an afternoon relaxing in the very park named after doing so.	1
Other visitors will come check out the park. I lived 2 blocks from the park when it was originally installed. It really was a fun and exciting idea.	1
People from other parts of Vancouver will come to see the sign.	1
people will be more likely to hear of the park's existence	1
People will learn the name of the park if it is given a name, even unofficially, that isn't so boring and forgettable	1
People will smile!	1
People will want to come to park that reflects the spirit of the community and has character.	1
Popularity of park will increase due to nickname	1
Pushes Vancouver forward in terms of diverse artwork that appeals to the younger generations (much needed).	1
Representative of neighbourhood ethos	1
Residents from other parts of the city will come to check out the piece as well	1
Residents will take extra pride in the park because of this process that brought the sign back to the park. It says something about the neighbourhood as one that has a playful sense of humour and a strong sense of community.	1
Raise profile of park.	1
Sense of community and fun!	1
suggests the park is for chilling	1
The community can feel the park is something that is uniquely theirs	1
The Park will be talked about more.	1
The park will reflect an important aspect of the contemporary culture of Mt Pleasant	1
The piece fits very well with the neighbourhood in that artists and designers are a major part of the ambience	1

The sign reflects the unique and diverse members of this community. The sign is a celebration of the humorous and creative people that live here!	1
The sign will show residents that the Park Board and Vision have a pulse and a sense of humour.	1
Things like this make our city fun and interesting!	1
Tourists can come chill at DCP!	1
tourists will also come to the park to check out the cool name	1
Tourists will be attracted to visit the neighbourhood	1
Van needs to lighten up	1
Vancouver has a reputation of a no fun city. For the most part, the reputation is warranted. The installation will show people that Vancouver is not afraid to have a bit of fun and that the city doesn't take themselves too seriously.	1
visitors from other neighbourhoods will visit the park	1
When choosing s park to visit, what sounds more interesting, "dude chilling park" or something else...say, Queen Elizabeth? Obvious choice!	1
will add unique character to the park, and help to create a sense of community involvement	1

WhyPositiveImpact_Other. Why do you think the proposed art installation will have a positive impact on the usage of the park?

Verbatim Responses	Total
adds sense of humour - it's an area of town that is filled with different part of life, and dude chillin park is a symbol of the tolerance that is exercises in these parts	1
Community engagement	1
Gives nearby residents a sense of investment in the park	1
Highlights creativity and sharing	1
it is a positive movement reflecting a more varied population i love it may get international coverage!	1
it is clever and interesting!	1
It is funny! We like fun!	1
It provides a light-hearted and humorous experience for all users	1

It will become a city-wide attraction	1
it will show vancouver to have a great sense of humour, which is universally appreciated	1
It's awesome	1
It's been organically sourced from the community.	1
People will know it's a chill place for dudes.	1
positive impact on tourism/ the economy	1
pride	1
Reflection of community values	1
The sign will provide confidence to dog owners to tell Animal Control officers to cease and desist their harassment of benign offleash dog activities.	1
There is a dude chilling there. I mean, dude. He's chilling.	1

WhyNegativeImpactCopy1_Other. Why do you think the proposed art installation will have a negative impact on the usage of the park?

Verbatim Responses	Total
Also I the park has a problem with drunks and transients. It shouldn't be glorified by a sign. They're not chilling. They're drunk or stoned.	1
Both "dude" and "chilling" are slang terms that shouldn't be immortalized in public signage.	1
I think Vancouver should honor the Coast Salish nations in artwork	1
It gives the impression that it is a place to loiter and solicit otherwise known as "chilling." This park already has an issue with drunk and disorderly individuals and adding this sign will do nothing but encourage the wrong type of behaviour.	1
It makes it look as though people living nearby are drug addicts.	1
Reference to other people who use the park to "chill", reference used or could be used with negative connotations	1
the art installation has to be more relevant to Musqueam people and other First Nations. Naming is very relevant to everyone now in this year of reconciliation.	1
the name gives a bad connotation associating the park with alcohol and drug use	1

WhyNegativeImpactCopy1_Other. Why do you think the proposed art installation will have a negative impact on the usage of the park?

Verbatim Responses	Total
confusion will be created as to the real name of the park. A 'sign' similar to official signs should not be considered as 'public art'	1
If the park is renamed, it should be after someone or something who has done something positive in the neighbourhood. If the group advocating for the change want to acknowledge the artist, why not name the park after the artist?	1
Not really negative, but many other parks have plenty of amusing nicknames that are used more frequently, difficult to install signs for all of them	1

Why8th_Other(specify). Why do you prefer the site at the corner of 8th & Brunswick?

Verbatim Responses	Total
8th has relatively high pedestrian and cyclist traffic. When it was installed a while back most people who talked about it initially noticed it and the park while they were commuting past.	1
A small "Dude Chilling Park" sign already exists at the garden (art sharing box).	1
can see sculpture and sign together	1
Closer to The Dude.	1
doesnt have to be beside the gardens, would be too cluttered.	1
I feel like that portion is the "front" of the park	1
I mean if you just replaced all mention of Guelph Park with Dude Chilling Park it would be ideal.	1
Ideally I would like it closer to the "Reclining Figure" sculpture	1
It is outward facing, where a sign should be. Inside the park would be just weird. Also, it is the kind of artwork you like to notice on your way by or in, but not the kind you want to sit and stare at, which is what the garden location would be good for.	1
It is visible to people passing by but not through the park. I would prefer to have the sign at 8th and Guelph (south end).	1
It should be next to the chillin' dude of course, and the dude abides.	1
It's a logical spot. The other spot doesnt make sense.	1
It's closer to the dude	1

most visible	1
n/a	1
so i wont have to see it when i walk through the park.	1
The area around the art exchange box is already cluttered both physically and visually with benches, trash an, garden, compost pile etc...	1
The garden is one entry point to the park, the s/w corner is another that could use a visual greeting and entry to the park.	1
The site is in plain view of the sculpture it references.	1
There is already a lot going on in the other proposed location (garden, art exchange, etc.)	1
why not?	1

WhyGarden_Other(specify). Why do you prefer the site near the community garden by the art exchange?

Verbatim Responses	Total
as an art piece it makes relative sense to position it here	1
I presume Guelph park will remain the official name and dude chilling will be secondary, hence the dude chilling sign within the park and not at the entrance to the park. If it is a complete renaming of the park, then the sign should be at a more prominent location at an entry to the park.	1
If you have to put it in, it won't be as visible.	1
it is where the dudes may be chillin' (now we can encourage people to be the dude chillin at the park:)	1
it will be more of a hidden gem and wont be as confusing to people not "in on the joke"	1
It's where the artist originally put it	1
Less visible from the street	1
less visible, so less confusing to people who will see both signs and wonder what the real name of the park is	1
Seems fitting to be near art exchange & gardens - character of the park	1

Comments. Do you have any additional comments about the proposed sign?

Verbatim Responses	Total
A great fun idea to put the sign back :-)	1
Again, would be great to see more art opportunities in this little park - perhaps some integration with the farmer's market that was piloted there this summer. Because the park is kind of dark at night (and often residents decide to cross through it to get to their homes faster), it would be great to see some colourful light installations. Am glad that the City decided to add this sign to the park.	1
All of my neighbours really support this initiative. I haven't yet encountered a person who doesn't like the proposal. 8th/Brunswick makes much more sense as it's much more prominent than the alternative location. I think the sign will also be very positive for the (east) Vancouver brand	1
Anyone who is not in favour of having this sign, clearly ain't no chill dude.	1
As a local resident and frequent park user (at least 2x a day) I think the sign is a perfect addition to a great community park.	1
As a local resident, I appreciate the humour, creativity, and subversive nature of the original sign. However, I disagree with making this particular sign permanent. Given the amount of energy, resources, and commitment the City of Vancouver is putting towards this particular sign (which is commendable), I'd prefer to see the City of Vancouver initiate dialogue with the Tsleil-Waututh and Musqueam First Nations who call this area home and who have their own name(s) for this Park. I'd prefer to see a sign that acknowledges the original and continued Coast Salish inhabitants of this area and names the park in Halqomelem. This is an especially good opportunity given the City of Vancouver recently affirmed this the Year of Reconciliation. If the City of Vancouver is going to demonstrate the commitment to alter the Park's sign in a creative way, let's honour those that should be honoured first-- the local First Nations.	1

As long as the park is not renamed "Dude Chilling Park" and the park still has a real sign somewhere stating it's really Guelph Park, then I'm ok with it. I think an additional informational plaque explaining the Dude sign would be good, as I had mistaken the original Dude sign as a way of pointing out that the park almost always has a group of drunks at the tennis courts all summer, and a different group of drunks hanging out at the park tables and benches, drinking openly. Speaking of which, more frequent police presence at the park would be wonderful in the summer and early fall. Thanks.	1
As was mentioned in the web page concerning this proposal, the name reflects the neighbourhood much more than Guelph, which has no meaning whatsoever to the community. It indicates a sense of humour too, which is rare in civic administrative infrastructure.	1
Aside from the re-installation of the sign, I would like to see the name of the park officially changed to "Dude Chilling Park", since it's a much more appropriate reflection of the neighborhood's character, in my opinion,	1
Be nice if the Parks Board could finally do something right. Yes, I am thinking about the Hadden Park Disaster.	1
Can't wait to see it up!! What a great story :)	1
Change the park's name while you're at it.	1
Chill out, dudes!	1
Common sense says this is cheap and frivolous chance to engage generally younger voting population of this city. Big Deal. Where is Music Camp Bowl? Or No Bro Entertainment District. Say we find a suitable location, and tag it and get 1500 petitioners, can it go to a vote? Serious question. Another is how did the park chilling "regulars" vote without Internet access	1
Completely fine. I like it, and it was a genius local resident who put it up!	1
Consider getting the civic naming committee to get involved in other honorary names for other parks, landmarks, etc.	1
Cool	1
Do iiiiiiiiiiit.	1
Do it please. :)	1
Dude Chilling park sign is a really fun piece of public art, because it's so close to reality. I think it adds a sense of playfulness to the neighbourhood. Vancouver needs more public art and this is a very fun and subtle start to that.	1

fantastic.	1
Give the people what they want! Come on! It's just a sign and most importantly it's FUN! :)	1
Good job on listening to the people!	1
Great idea. Have a bit of fun Vancouver!	1
great sign -- love it	1
I absolutely love that this discussion even happened in Vancouver - thank you for making it even better to live in this city.	1
I am really proud and pleased that this city has taken serially the requests of our youth and have created a space for them to voice tender and work through the political system. to really be encouraged and engaged in the processes. This is quite a feat for the city and for the movement for more intergenerational torch passing and bringing hope to the youth that they CAN make a difference and are welched to participate in our great city! thank you!	1
I am thrilled that this proposed sign is getting the opportunity for due process.	1
I approve of the sign. A city should have a sense of humor.	1
I currently live in Montreal, but when I move west (hopefully next year) I'll certainly make a pilgrimage to the park. 'Dude Chilling' is a wonderful quirky touch to complement the sculpture that inspired it. So 'be cool' and make the sign official and permanent. :]	1
I don't want the sign at all. To me, it speaks to a larger issue with homeless people struggling with addiction issues. The sign makes light of that and there's already a problem with people leaving garbage, sleeping on the bench. I use that park daily and it's really disturbing to be heckled, yelled and seeing men and women drunk at 10am. Also there's a school adjacent to the park and in the night, they wander over there. No sign.	1
I feel that this sign will help the city shake the unofficial "no fun city" tag that some have given to us. It is truly an art piece and represents the character of the neighborhood in which it existed.	1
I feel that visitors to Vancouver and the park who are not from the city or neighbourhood would balk at the name. It doesn't command respect, in my mind, and perpetuates the "BC stoner" reputation.	1
I genuinely love this idea. Its a true representation of east van culture.	1

<p>I have a comment about the park. Several groups in the community have proposed changes to the park and overall our family supports these. However, a priority for the park is a fenced off-leash dog area. Almost daily we have run-ins with off-leash dogs. we do not have a dog ourselves. Our neighbours seem to feel entitled to allow their dogs to run around on the school yard, playground and in Guelph park with no respect for people who may be afraid of dogs or for the children who step in dog poop and drag it into the school. the city needs to take some leadership and not just allow random community driven proposals to go ahead without considering the broader needs of the community. an off-leash fenced dog area in this park has been a priority for years. yet small, random other projects like this and the community garden get more attention and quicker action. where is the leadership??!!</p>	<p>1</p>
<p>I just think it's a beautiful gesture and very west coast to name a park Dude Chilling Park. That can only happen here and I think we should embrace this stereotype. I really and truly believe this will get a ton of media attention and places our great city in a positive light. Sure other cities like Toronto might make fun of us but really, each one of them in that concrete jungle working 14-hour days would kill for an afternoon of relaxing in Dude Chilling Park. It might become an unexpected tourist stop in Vancouver. One of those random things to see on your journey to the best place on earth. Let's do it!</p>	<p>1</p>
<p>I like the initiative that the community has taken to propose this change.</p>	<p>1</p>
<p>I like this sign because it shows that Vancouver is changing with the median age of its residents. The art is amusing, respectful, and puts a smile on the face of a generation that will age with the City.</p>	<p>1</p>
<p>I live nearby the park and visit it regularly. I have shared good times with friends and made new friends there as well. When the sign was put up there was a buzz about the park like I have never seen before. People were talking about it online and there were people visiting the park to see it in person.</p> <p>I would love that this sign be re-instated and love the connection between the sculpture, the sign and the character of the park. It truly is a great place to chill with friends :)</p>	<p>1</p>
<p>I love Dude Chilling Park!</p>	<p>1</p>
<p>I love it and I hope it gets to live on. I'm delighted that the city is considering posting it.</p>	<p>1</p>
<p>I love it and think its a fun and wonderful piece of art that needs to be re-installed.</p>	<p>1</p>

I love it!	1
I love the idea of this sign, and the execution of the artwork. But I find it a bit masculine. This, in a park that is already heavily used by many masculine men. I think the sign should be installed, but I would like to see features that explicitly welcome women to the park, as well.	1
I love the idea that people will hardly notice the sign as it is a typical Park board sign, then suddenly, the name will register and it will give them the gift of being amused.	1
I love the name!!!	1
I love the originality and artistic spirit behind this work. It should be preserved for more residents and visitors to enjoy in its original placement. More spontaneous, quality works of art should be encouraged in the city of Vancouver, as it enhances the environment for everyone.	1
I love the sign & the story behind it!	1
I love the sign and can't wait to see it installed.	1
I love this piece of public art! It gives a great nod to the standing sculpture and it is playful!	1
I love this sign! I took a picture of it when it was first installed. I have lived in this neighborhood for over 20 years & seen many changes for the better. By changing the name to Dude Chilling, it's like a whimsical crown on a great wee gem of a neighborhood.	1
I never knew the name of this park until the Dude Chillin sign was created. The Guelph Park sign is poorly placed. When I heard about the Dude Chillin name, I knew what park the name referred to.	1
I really hope this happens. It is a lighthearted endeavor that created a feeling of community in the area and made people smile.	1
I REALLY hope this sign gets installed!	1
I support this proposed sign, it adds some personality and a positive story to the Park. I do, however, think that more history should be acknowledged in our city parks, including Indigenous history and place names. This also includes Indigenous art. I do not see these sorts of initiatives (recognizing Coast Salish history and Vancouver history) as mutually exclusive. Thank you.	1
i think it is a great idea. cool for the city and the neighbourhood. it fits so well	1
I think it is art. Spontaneous art in this city is so rare. It would be a beautiful thing for the city to embrace.	1

I think it shows that Vancouver has a sense of humour and we aren't the No Fun City everyone thinks we are.	1
I think it would be particularly useful and pedagogic if the city of Vancouver could honour and educate others about Coast Salish nations' names and history, which extend well beyond current reserve boundaries, and would use this opportunity for that instead of this suggested monument.	1
I think it would make the park a warmer community space. Create dialogue & give people a smile.	1
I think it's a bad idea to rename the park. I love the whimsy, but civic parks and streets have particular names that already reflect the city's heritage. Changing Guelph to something as asinine as 'Dude Chilling' disregards that heritage.	1
I think it's a great idea to put it back!	1
I think it's a great idea. It's definitely creating a sense of community in the area.	1
I think it's a wonderful opportunity for the City to show that it's open to the creativity, and the democratic wishes, of Mount Pleasant residents. Any potential downsides are far outweighed by the benefits, including positive national media coverage and fun social media opportunities for years to come. Like Seattle's Fremont Troll, or Montreal's street art by Roadsworth.	1
I think its cute, has a great story behind it, and it gives park visitors something funny to talk about!	1
I think it's fun that the community got together like this.	1
I think it's great - it's a community-building piece and gives residents the opportunity to participate in fashioning the built environment.	1
I think it's great that the city has taken efforts to replace the sign seriously (even if not officially renaming the park) as it provides amusement and a point of interest to others who would not otherwise give a second thought to "Guelph Park". Hooray for adding a little spice to life!	1
I think that it is important for the city to recognize moments where citizens participate in meaning-making for a place. And in this instance, a local artist wanted to re-name Guelph Park as 'Dude Chilling Park', which perhaps is a name that resonates with surrounding residents more than Guelph. Although the city may choose not to rename the park, having the artist's sign up to remember a resident's planning initiative is significant.	1

I think that the actual wooden dude should be cleaned up, maybe have a coat of stain to help preserve the wood.	1
I think the city needs more fun and creative things like this. We have a reputation as a serious and no fun city. That is definitely not the case.	1
I think the proposed sign is a great idea. The name is relevant to the wooden sculpture in the park whereas Guelph Park bears no real significance other than the street it shares its name with. Maybe The City could consider creating another sign so there could be one at both proposed locations.	1
I think the proposed sign is taking up a lot of time and attention when other important issues are at stake. Rather a 'gimmick' to get voter's attention than anything of real significance.	1
I think the sign is great for the park!	1
I think the sign was a really clever idea and if it brings people happiness and pride then I fully support it and can see no reason at all why it should not be place there.	1
I think this is a great idea. Please reinstall the sign!	1
I think this is fantastic! A sign(no pun intended) that the city approves of the communities views. And what other city has a "Dude Chilling Park".	1
I think this is just great. It is about time that we start to celebrate being a quirky west coast town. We have swung so far into corporate culture, we need to remind tourists that we are fun and funky. Its like the Seattle gum wall, or voodoo donnuts in Portland. Notable counter culture embraced by the COV will add value to the community.	1
I think you should rename the park Dude Chilling Park.	1
I used to live across the street from this park (I know live three blocks away) and could never remember the name "Guelph Park." Dude Chilling is easier to remember and puts a smile on my face.	1
I used to live two blocks from the park. I think it's a great sign and would enhance community spirit	1
I very much support the return of this sign. It is humorous and creative.	1
I was delighted by sign when it was first installed and would be happy to see it back. It is amusing and accurately captures the vibe of the neighbourhood.	1

I was thrilled with the original installation as I lived in the area 20 years and saw the art piece that the Faux sign was referring to. It was up long enough that even the city had no idea as the original installation was an artistic work that mirrored the cities signage but it brings way more attention to the carved art as up until the faux sign was reported on by media that many locals actually stopped and looked at the carved art.	1
I would hope it is installed such that the artist receives credit, but not in a way which lessens the impact of the sign. That is, it should appear to be a genuine VP&R sign at first glance, not something denoted as 'Art' by a plaque near it.	1
I would love to see a plaque or a sign in the park that outlines the history of the 'Reclining Figure' the artist that donated (?) it, the ex-principal that thought it was offensive, the relationship of the "Dude Chill'in" sign to the "Reclining Figure" and the name and details of the artist who initiated the "Dude Chill'in" sign. We are proud of our city and I embrace the collective history that culminates with public displays of creativity. Long live Mount Pleasant!	1
If the idea for the re-installation of the sign is to invoke response and a positive community spirit from the public then the more visible site near the art box exchange is better.	1
If the people of the community want to make a change then let them, they live there.	1
If we are going to rename things we should acknowledge that we are on Indigenous land. Can Dude chilling be translated into Squamish language?	1
I'm 100% in support of the sign. I can only imagine positive ways in which it will effect the neighbourhood.	1
I'm an artist / cultural worker and feel that this work is nothing more than a one-liner, and not a very good one. I'd love to see another piece of art in this park but not this embarrassingly trite sign. Please do not inflict this upon those of us who have to walk by that park every day.	1
I'm happy we get to keep it :)	1
I'm not super excited about the proposal but it might bring some more people to the park and it might make some people smile... please consider at least making it say "dude chillin' park"... chilling just doesn't sound as good.	1
I'm so happy that this has gone from "vandalism" to public art. Took a little while though! ;)	1

I'm so happy the city is open to incorporating this sign into the park. It's empowering to know that residents can have an influence on signage because it's such a top-down authoritative thing. So many names and signs in Vancouver represent a colonial history where rich land speculators doled out the city and destroyed the natural landscape. This sign signifies a move towards reclaiming space not much unlike the movement to daylight streams. It's not a coincidence this sign is near where so many creeks used to drain into false creek flats.	1
It adds a sense of humor to the city landscape.	1
It is a fun and harmless addition to the park that brings a sense of community and lighthearted fun. This lighthearted fun and community are much needed in our often unfriendly city.	1
It is a fun and unusual art piece. A special treat to have not just in the area but in Vancouver.	1
It is disrespectful to Queen Victoria and so to our heritage - please do not put up the sign.	1
it looks great, constructed with consideration and care, not an eyesore, adds personal connection and general interest to the park for many. it's fun and completely harmless!! there's no reason to NOT re-install it as permanent fixture in the park.	1
It seems the Parks Board has already decided to install this sign. I've lived across the street from this park for over 20 years and this sign will only attract more drunks and drug users just by it's 'name'. It's similarity to official parks signs is only confusing to the public making them think the actual name of the park is 'Dude....'.	1
It's a really funny sign for a funny little park	1
It's a ridiculous idea and it's laughable that the city of Vancouver is even considering the addition of a sign that reads "Dude Chilling Park." Respect the history of this neighbourhood and leave it as it is - Guelph Park. Furthermore, I am not a "dude" and refuse to be identified as one if I use this park.	1
It's a funky thing for a very diverse neighbourhood and nicely reflective of the laid-back vibe of the park.	1
It's a great idea.	1
It's a great piece of art!	1
its a great project	1

It's a lovely testament to creativity and whimsicality. Reinstalling it with city blessings helps dispel the "No Fun-Couver" aura, and will bring smiles on rainy days (and non-rainy days too :o)	1
It's a notable part of the community. In my circle we still refer to it as Dude Chilling Park. It was a meeting point for summer grass lounging because the sign made it to recognizable to friends visiting from other neighborhoods.	1
It's an original and industrious effort on the part of the creator. Tip of the cap to that person.	1
It's awesome.	1
It's charming and reflects the character of the park and those who use it.	1
It's fun!	1
It's funny ;)	1
It's funny and will give people something to talk about. Will also potentially draw more visitors to the park.	1
It's great to see that the city retains its sense of humour.	1
It's great!	1
Its great!!!	1
Its great, bring it back. I think "dudes chilling" in parks is one of the best things about the city of Vancouver.	1
It's harmless, locally-inspired and fun. Go for it.	1
Jesus christ, it's a sign. This consultation process is ridiculous and unnecessary. Just put it back.	1
Just by looking at the community spirit that erupted out of support for the original installation of this piece I cannot see a reason why anyone would see this as being a negative endeavour. It's positive, witty and fun and I think Vancouver would be better off for taking steps in this direction.	1
Just that I think it's awesome!	1
keep it! the city needs more fun and whimsy	1
Keep the sign and the reclining figure but do not change or loose Guelph Park.	1
Love the sign, love the park, love that the city is even considering this.	1
Many people will take pictures of the sign and post them online, boosting Vancouver parks' social media presence in a fun and noticeable way. It's perfect for the neighbourhood.	1

Maybe the location of the sign should be closer to the sculpture? Just an idea. Glad this is moving forward. A neat idea with positive neighbourhood support.	1
More names around the city should reflect interesting subjects and topics, and original ideas, because things like this humour and excite residents and draw tourists.	1
More public art!	1
My 13-year-old son thought the sign was less important than a sign to permit offleash dog activity at the park, but he's happy that the sign will contribute to more respect for "dudes" who want to "chill" with their dogs.	1
My attitudes to the sign have changed over time. At first I thought the sign was a bit exclusionary, and potentially inconsiderate/one-sided (to change the sign without considering the views of park users) but I have now gained an appreciation of the artists point of view and rather like it now. I'm glad the City has been flexible/open minded in restoring it.	1
No	1
No, but I'd like to see that park cleaned up. I'm tired of the drunk Mexicans adressing me in Spanish while I'm in my garden plot. I'm also tired of drunk natives fighting over beer, or just plain fighting.	1
Please be cool, Vancouver.	1
Please do it! It is really the right thing to do. Our city needs some more progressive displays of forward thinking.	1
Please don't make it out of meat. Remember what happened last time.	1
Public art, whether by Banksy or a local as-of-yet unknown, can be the beating heart of a city. If it's good (and not bad spray tagging), it can define cities, neighborhoods, and public spaces in a fun and interactive way. Public art has been a part of the conversation in Paris, London, and New York for years. Are we comfortable in embracing the creative visions of our (few) creative types, or are we Toronto--bringing in the paint brushes and painting over anything with soul within 48 hours?	1
Put it back, it's less generic than "guelph park" and it's what everyone in mt.pleasant calls the park anyway. no discussion necessary	1

Quality, freely donated public art which has galvanized community pride and promoted Guelph Park not just to locals but to people from around the Grater Vancouver area is a welcome addition to our unique neighbourhood. A park is more than merely a landscaped space, it is the people who frequent that space that make it a wonderful place, and the re-installation of the sign celebrates these people, and will for years to come, celebrate our history as a creative and vibrant community.	1
Rename the park to Dude Chilling. No one even knows the significance of Guelph.	1
Should've linked the renderings in this survey so we know what they look like	1
Sorry, but I don't know of Guelph Park by name, but I've probably driven by it.	1
Spontaneous, participatory public art? Guerrilla gardening? It is great that our community produces things like this and I think the fact that the city is prepared to take these contributions seriously even when they're a bit silly, sends a strong message of encouragement to others who want to get involved in making their city fun, funny, and beautiful.	1
Thank you for being opening minded, Vancity!	1
Thank you for considering the application. It is great for the city to be responsive to community requests. Even if they err on the side of silly.	1
Thank you!	1
Thank you. I hope we reward creative artists like this because that is very talented and skilled artwork. Not to mention that it contains a bit of humor.	1
Thank you. I found the survey quite difficult to find on-line when I searched the Vancouver.ca website. The notice delivered to my home could have had clearly stated the url so as to gain more community feedback.	1
The art exchange and the community garden are an important part of the park and installing the sign at that site will draw attention to them.	1
The 'artwork' is cool, but why not actually change the name of the park to Dude Chilling Park??? The City of Vancouver has a chance to, well, be COOL! Why resist it? Everybody loves it. It's funny. It's a feel-good story. CHANGE THE NAME OF THE PARK ALREADY!	1
The installation was a wonderful addition to the park and created a great discussion and sense of pride in the hood. It would be awesome to make it permanent. We love it!	1

<p>The name "Guelph" holds no significance to Mount Pleasant. "Dude Chilling" reflects the laid back, artistic, inclusive nature of the Mount Pleasant neighbourhood.</p> <p>We may not be able to officially change the name, but putting the sign back will cement the name as the "official unofficial" name.</p> <p>I think this will become a point of community pride, similar to the East Van Cross.</p> <p>On a side note, I think it's really great that the city has listened to people about this and actually taken it seriously. It shows that the city is open to new ideas and actually wants to let community members shape their neighbourhoods. Thanks for that!</p>	1
<p>The name reflects good humour and appreciation for the park and it's art. It should be reinstalled in a prominent location.</p>	1
<p>The only reason I could possibly imagine anyone having to argue against it would be a profound lack of humour and deep deep self loathing.</p>	1
<p>The original intent of the art was to highlight an overlooked component of Mt. Pleasant's cultural identity (which in some ways exists independently of it's civic identity).</p> <p>In this, the "Dude Chilling" sign reflects on the easy-going and colloquial character of a neighborhood rich with many of the city's artists and musicians, for whom Mt. Pleasant's parks are highly valued as places to meet, relax, and share ideas.</p> <p>The inclusion of the Dude Chilling sign reassigns some of Guelph Park's identity to reflect this actual nature of the neighborhood, without excluding local residents (and that's a good thing). It's good-humoured, cheeky, and fun.</p>	1
<p>The proposed sign project needs to reflect the history of our community - further back than 1991. I feel this is a perfect opportunity to show via a clear and literal sign, that the government takes reconciliation seriously. The sign should be a Native place name.</p>	1
<p>The sign is a cool inside joke for residents of the neighbourhood and the city, yet there is nothing offensive or exclusionary about it. I think it would bring visitors from throughout the city, Metro Vancouver, and even out of towners to come check it out and enjoy the vibe of the park. Not getting the sign back would be a slap in the face to neighbourhoods and community at the hands of bureaucracy and humourlessness.</p>	1

The sign represents the laid back feel of West Coast residents, and is an excellent companion piece to the Reclining Figure statue. As Reclining Figure was gifted to Guelph Park in 1991, we can embrace the Dude Chilling Sign as a new gift to bring new life in to the park.	1
The sign should be as close to Dude as possible	1
The sign was well received when it was first installed.	1
The sign will encourage other artists to change their city for the better and create a place that tourists will want to visit even more for the public art.	1
The sign, and this whole issue, is kind of silly, yes. But I love that the city listens when the community speaks. Looking forward to seeing it back in the park. Thank you.	1
The story of how this sign came to be and came to be a community project is really great and an important part of the installation!	1
The world was built by people who just decided to do things, and no one told them they couldn't. I believe this sign represents a continuation of that philosophy and it is therefore important to the general psychological health of the community. Dude Chilling Park makes me feel free - Guelph Park makes me feel oppressed.	1
There needs to be more public art in Vancouver. Traditional namings of community places like parks are going to evolve as our generation takes charge.	1
Things like this make me proud to live in Vancouver. It's a city that doesn't feel stodgy or stuck in the past, a place which takes art seriously. I'm seriously impressed by the Vancouver Parks Board's stance on this.	1
This entire endeavor is ridiculous; pleases me to no end.	1
This is a great idea. It will likely end up as a tourist destination because of the unique story of this public art. It is an all-positive story.	1
This is a great way to begin dispelling the notion that Vancouver is a "no fun city". I love the idea and would be proud of my city for being open minded enough to embrace a bit of fun!	1
This is a wonderful and whimsical proposal that shows that Vancouver is listening to its people and it will bring positive attention to the park as neighbourhood.	1
This is an awesome and fun work of art. Keep it.	1
This is an excellent and easy way to expose a little bit of east van culture.	1

This is dumb that it's taking up time and resources.	1
this is fun, it causes no harm to the actual park, existing structures etc. It also is a public art piece chosen by residents, community and park users which cannot be said about any other art piece that is currently on public display.	1
This particular sign is both humorous but speaks to how many of the locals view the park. This is about the community having a say in decision making affecting public spaces in their neighbourhood	1
This sign is great. It's fun and it's made for the community by the community. Isn't that what the park is for?	1
Vancouver can be boring. People taking initiative and being creative and funny should be encouraged. I am assuming that is what talk vancouver would like to encourage as well, therefore, I think it would be best not to over "bureaucratize" this and just put it back up.	1
Vancouver has a reputation for being overplanned and boring. This is an opportunity to buck the reputation and contribute to a city that is a little more fun and relaxed - something we seriously need to work on.	1
Vancouver seems to be lacking in community spirit, character, originality and tolerance of things that are unconventional. I think that accepting this sign celebrates those things in a neighborhood where they are particularly valued.	1
We live less than 2 blocks away from Guelph Park, having moved to Mount Pleasant from the West End about a year ago and we are extremely supportive of the Dude Chillin' Park sign installation. It is a much more representative and community-based name for the Park and adds a sense of fun to the area. We would much prefer to have Dude Chillin' Park as our neighbourhood green space.	1
we need to collectively lighten up. Change the name of the park officially even. It's more reflective of our city than a park named after another Canadian city.	1
What a fantastic idea!!!! I love the creation of new art in our community! I wish there was more art like this that is humorous and positive. I can't see any reason why anyone could be opposed to it!	1

what does the original artist think? That should be considered.	1
it's a great idea, it's what the park is really called anyway and it'll be called that with or without a sign. But it's a positive gesture acknowledging local colloqialisms.	
Why don't you just rename the park Dude Chilling Park? Seriously?	1

Gender_Other(please specify). Do you identify primarily as___?

Verbatim Responses	Total
Meat popsicle	1
none of your business	1

Q12_Home_Language_Other - specify. What language do you speak at home most often?

Verbatim Responses	Total
Klingon	1
Polish	1
serbian	1
Swedish	1